



# LG G7 ThinQ Speaker System Replacement

If your LG G7 ThinQ (model IMEI...

Written By: Alivia Catey



# INTRODUCTION

If your LG G7 ThinQ (model IMEI 358159091436289) is producing distorted, intermittent, or no sound from the external speakers, use this guide to replace the speaker system.

The speaker system produces all the sound/audio that exits the phone. A [faulty speaker](#) will produce distorted or no audio.

Before using this guide, inspect the speakers for debris that may be interfering with sound quality. Typically, a small buildup of dust can be removed using an [ESD-safe brush or small dust blower](#).

Before beginning, make sure the phone is powered off and is disconnected from any source of power.

---

## TOOLS:

[iFixit Opening Picks \(Set of 6\)](#) (1)

[Jimmy](#) (1)

[SIM Card Eject Tool](#) (1)

[Phillips #000 Screwdriver](#) (1)

[Tweezers](#) (1)

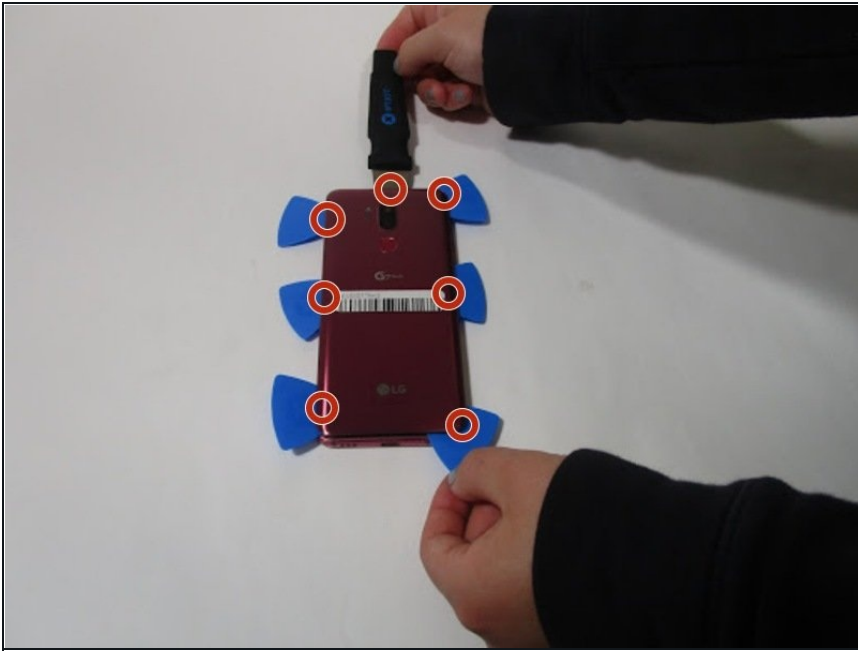
---

## Step 1 — SIM Card



- Insert a SIM card eject tool into the hole in the SIM card slot on the top right of the phone.
- After the SIM card tray is ejected, remove the SIM card tray from the phone.
- Remove the SIM card from the tray.

## Step 2 — Back Cover



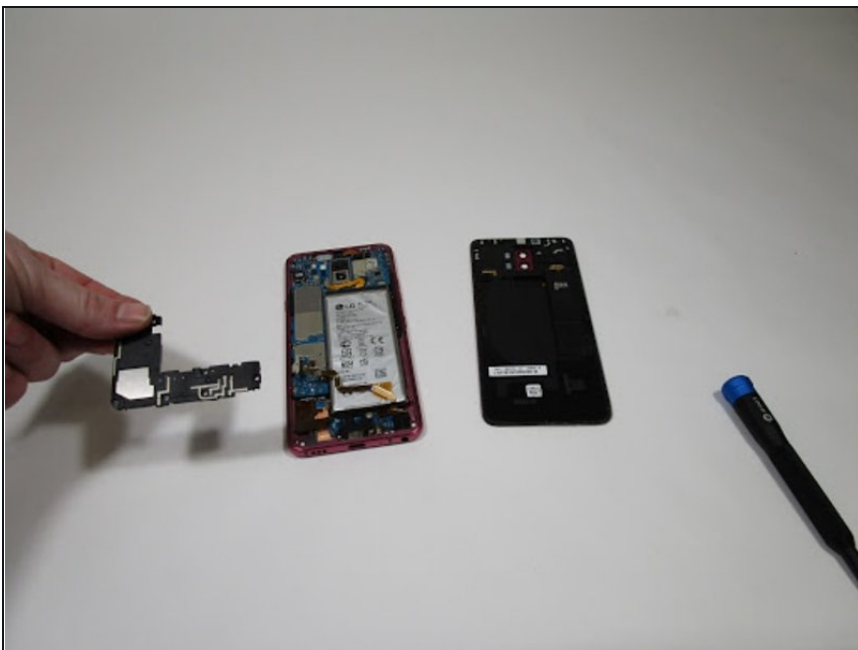
- Place the phone so the back cover is facing upwards.
- Insert the opening picks one by one onto each side with equal pressure.
  - ① There is extra adhesive at the top near the cameras. You need to loosen the adhesive there to open the case.
  - ① If the picks are too thick to fit in, you can use the Jimmy to start the process.
- Use the pick with the best leverage to pry the back cover away from the phone.

### Step 3 — Speaker System



- ⓘ This device did not come with a midframe, but if yours does, follow the instructions in the [teardown video](#) to remove it.
- Remove the screws along the perimeter and central area of the phone using a Phillips #000 screwdriver.

### Step 4 — Remove the speaker system



- Use your fingers or [tweezers](#) to remove the speaker system.

---

To reassemble your device, follow these instructions in reverse order.

