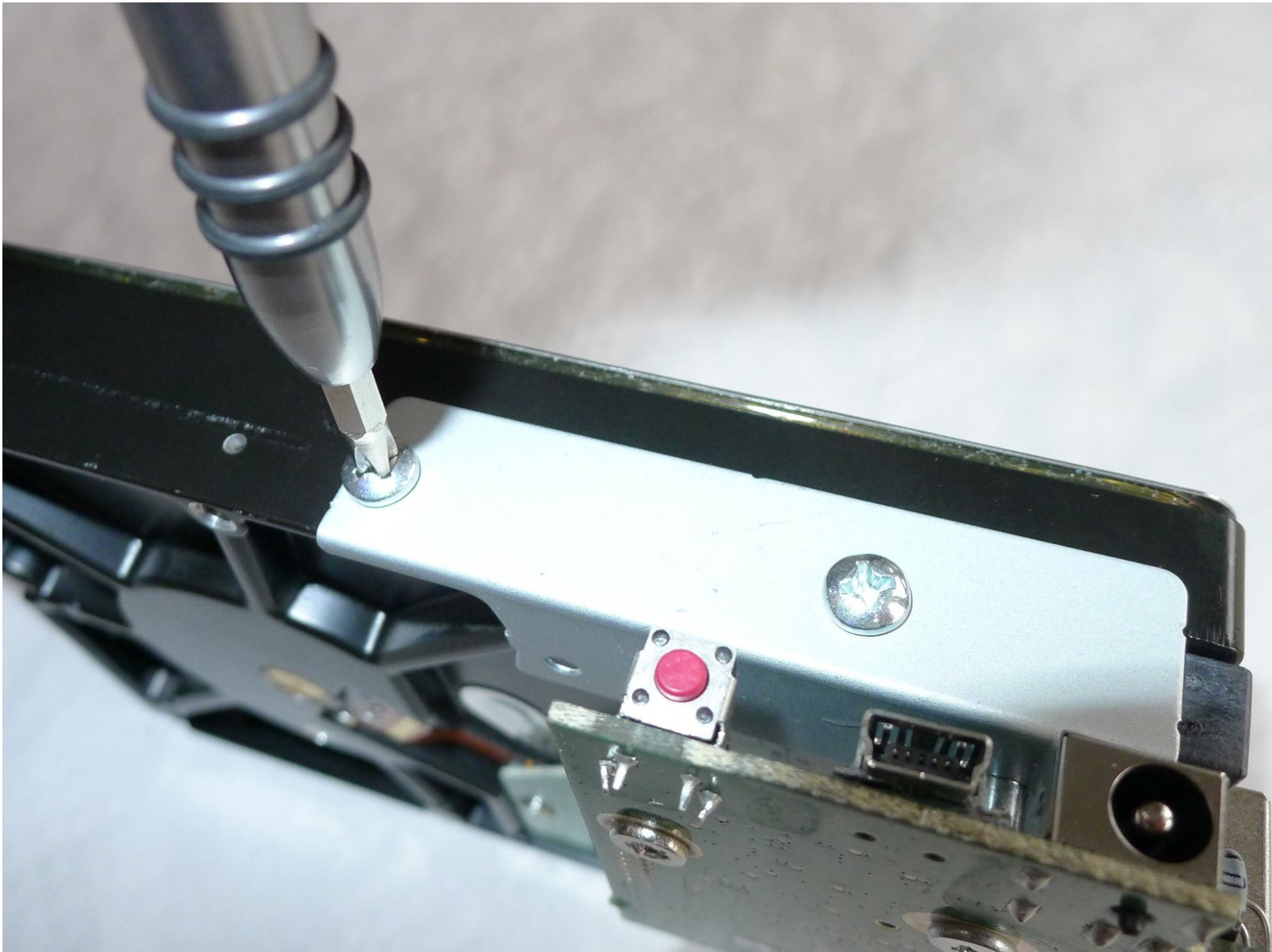




Disassembling Western Digital Essentials HD SATA/USB Bridge Motherboard

Only prerequisite guide for disassembling Western Digital Essentials HD

Written By: Gaetan

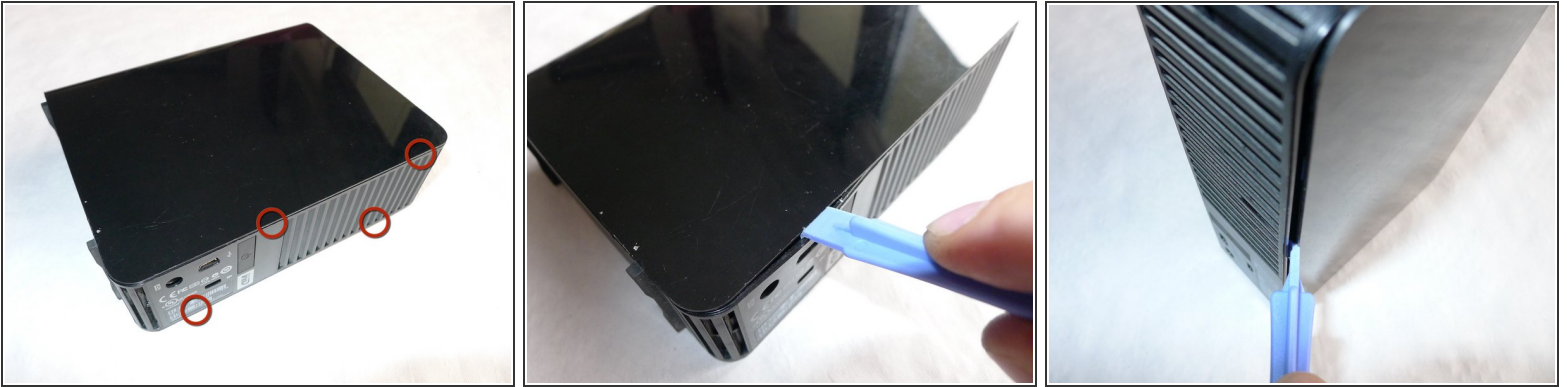




TOOLS:

- [Phillips #1 Screwdriver](#) (1)
-

Step 1 — Case



- Use a large plastic opening tool along the rear panel:
 - There are 4 clips to release.

Step 2



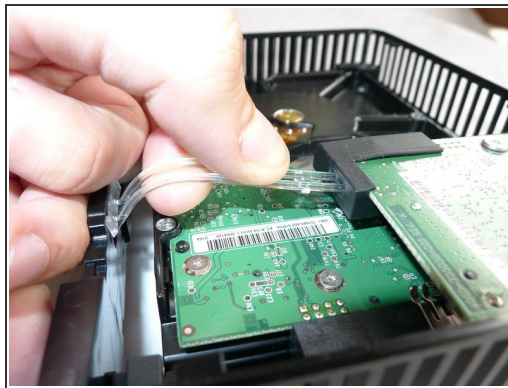
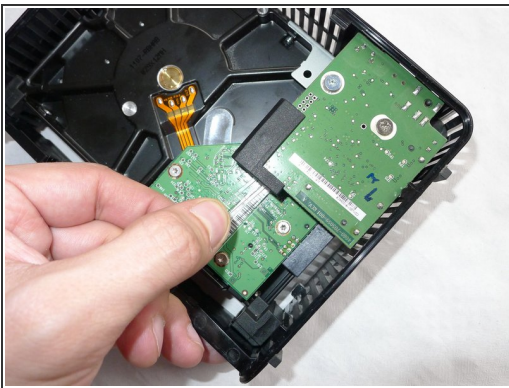
- Slide the cover along the plastic frame.

Step 3 — LED Light conducting plastic pieces



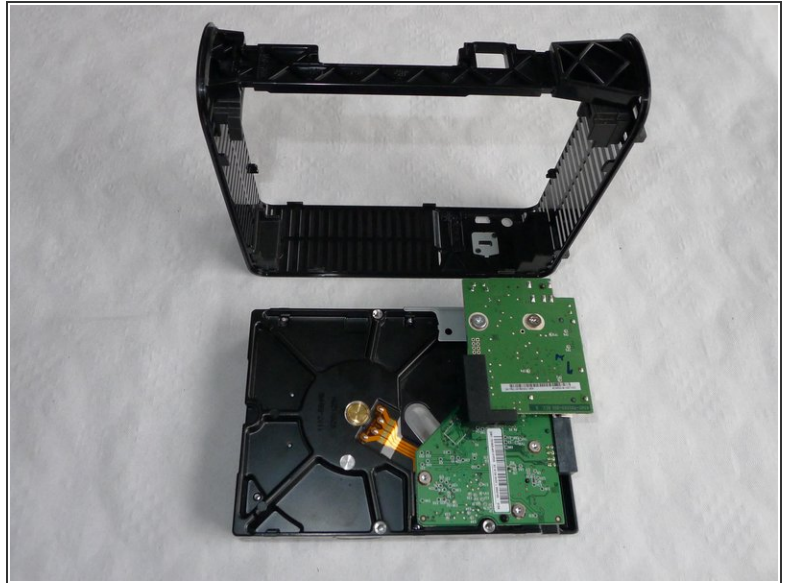
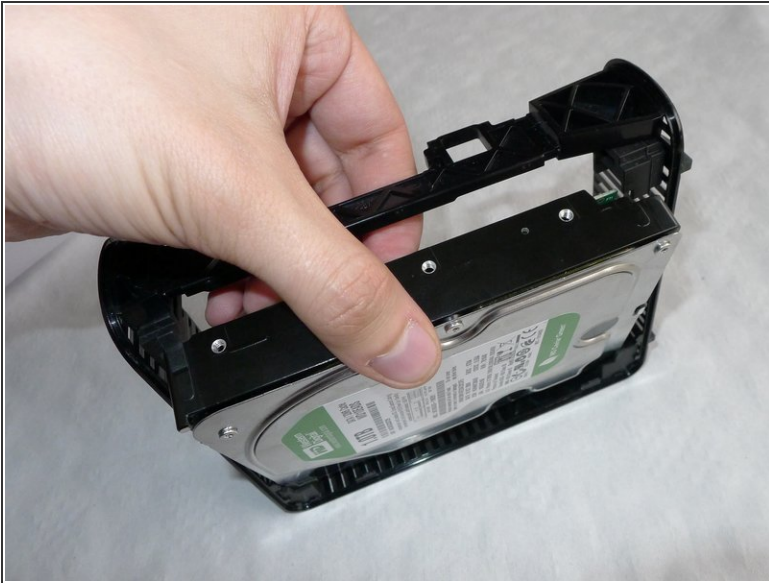
- Slide off the largest plastic pieces.

Step 4




- Bend the second small plastic piece to release it from the rubber piece.
- Now you can slide it out.

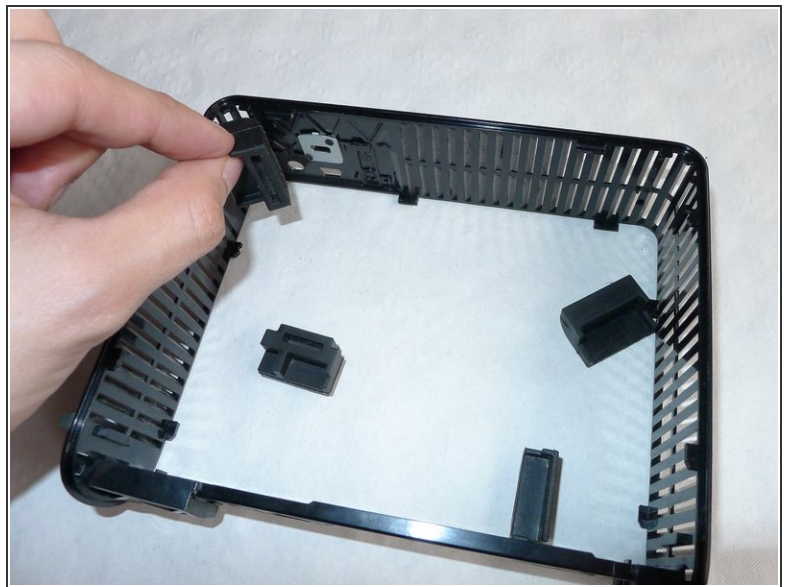
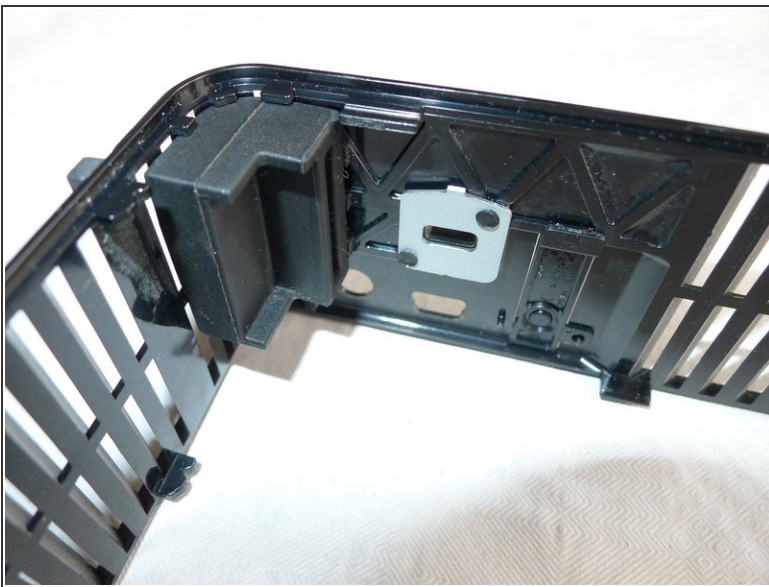
Step 5 — Disassembling Western Digital Essentials HD Hard Drive



- Slide out the hard drive as shown in the picture

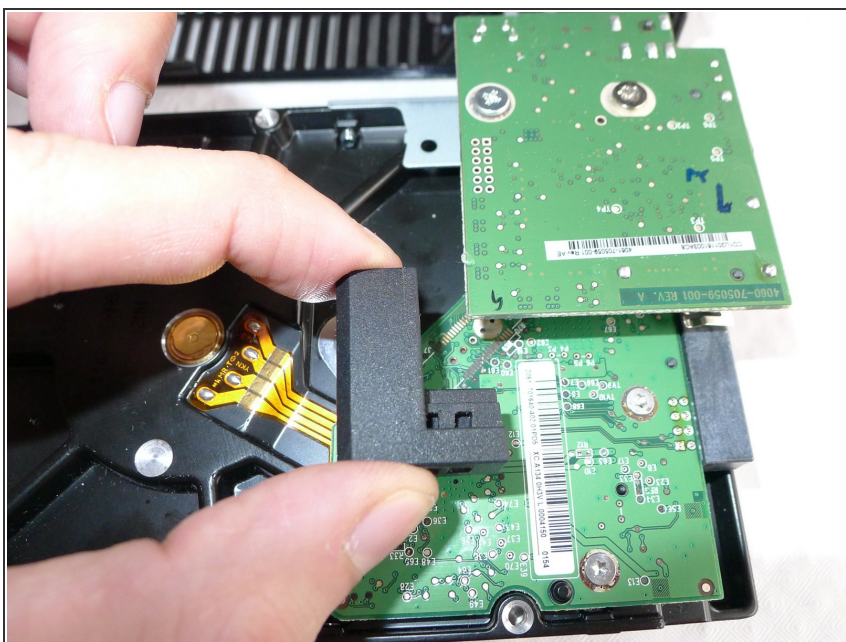
 *Make sure to slide as shown or you may damage the USB bridge logic board.*

Step 6 — Disassembling Western Digital Essentials HD Anti-vibration rubber pieces



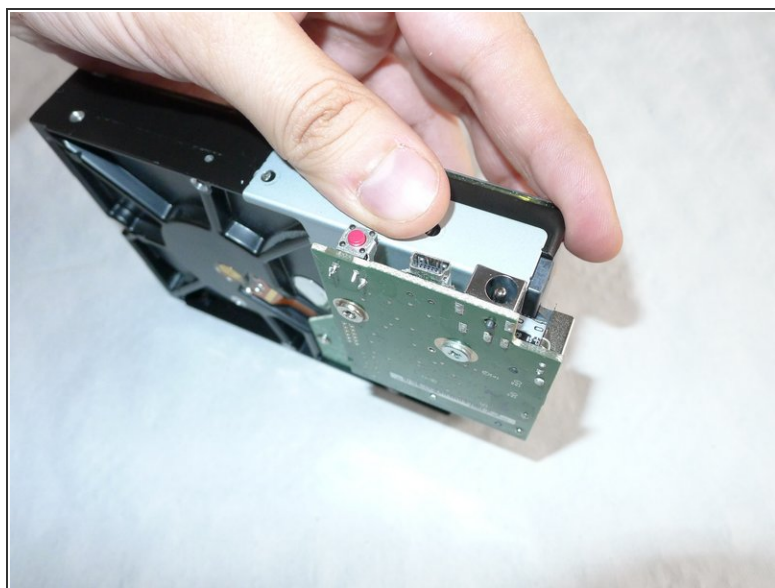
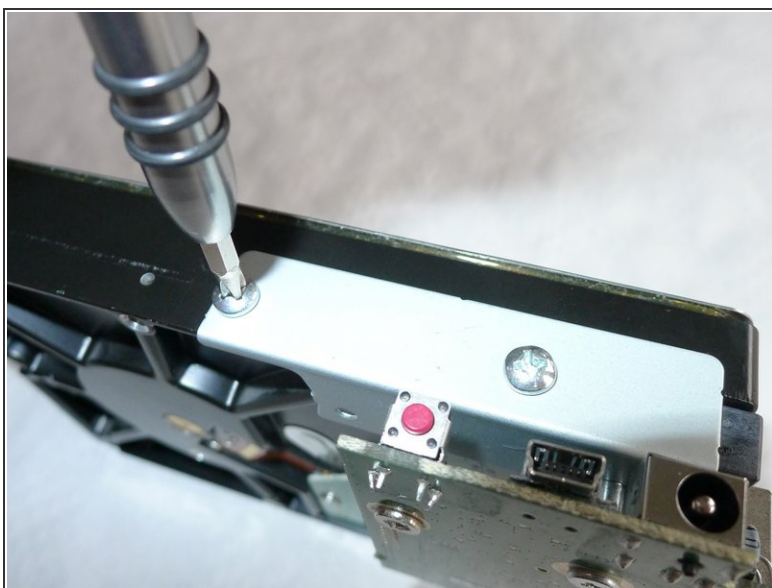
- Remove the 4 rubber piece from the plastic frame at each corner.

Step 7



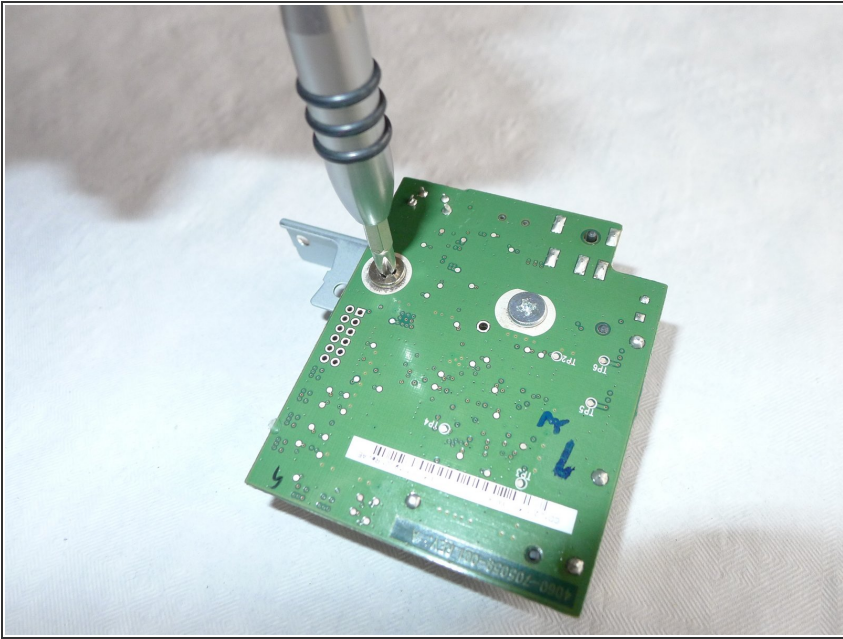
- Remove the rubber piece from the SATA/USB bridge logic board.

Step 8 — SATA/USB Bridge Motherboard



- Remove both screws holding the retaining plate and the hard drive.
- Slide the retaining plate in order to disconnect the SATA connector.

Step 9



- Remove both screws holding the retaining plate with the logic board.

To reassemble your device, follow these instructions in reverse order.