



Charge 3 Disassembly

Written By: ShellingRook27



TOOLS:

T3 Torx Screwdriver (1)

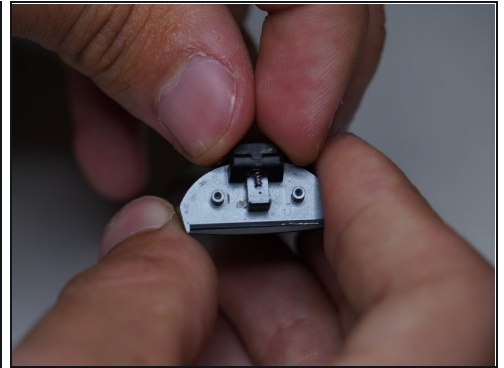
T2 Torx Screwdriver (1)

Heat Gun (1)

Razor Blade (1)

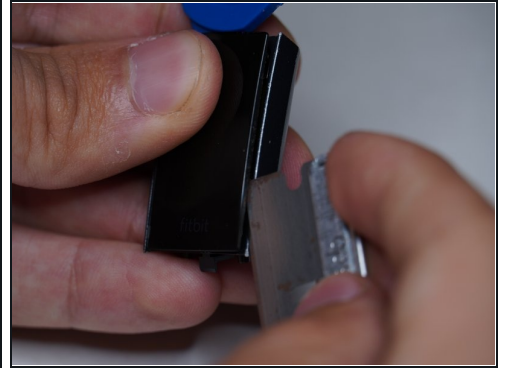
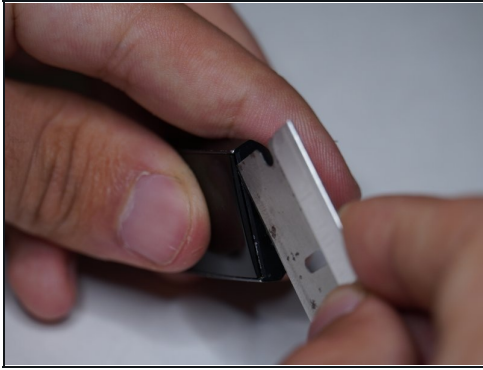
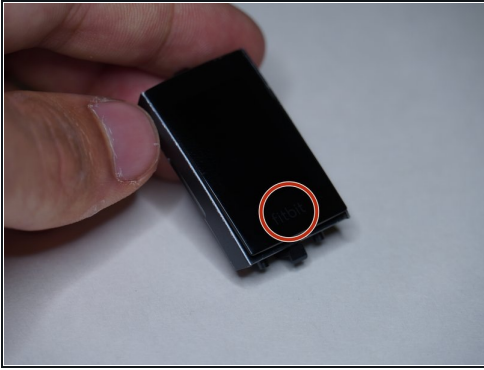
A thin spudger would also work

Step 1 — Strap Connectors



- Remove both T3 screws
- Slide off the plastic piece by lifting out and then up
- Slide plastic and spring assembly off the rail

Step 2 — Display



- Heat the glass screen with a blowdryer to soften the adhesives

⚠ Start the next step on the **opposite side** of the Fitbit wording below the glass. This is due to the display cables being located there

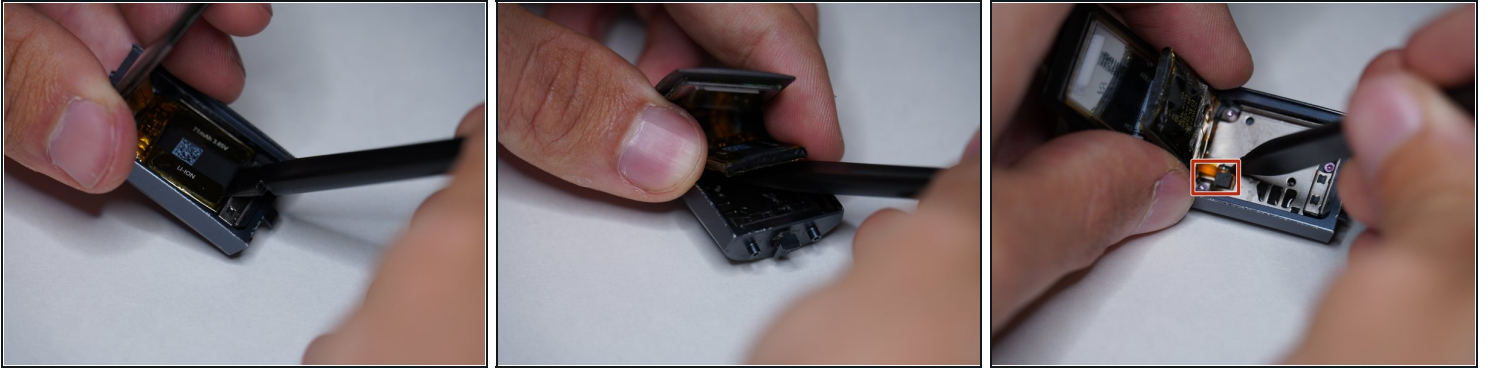
- Insert a razor blade between the glass and the body
- Keep going around the rim of the display until loose

Step 3 — Cable Warning



⚠ This is how close those cables get to the edge underneath the Fitbit wording so be careful

Step 4 — Battery

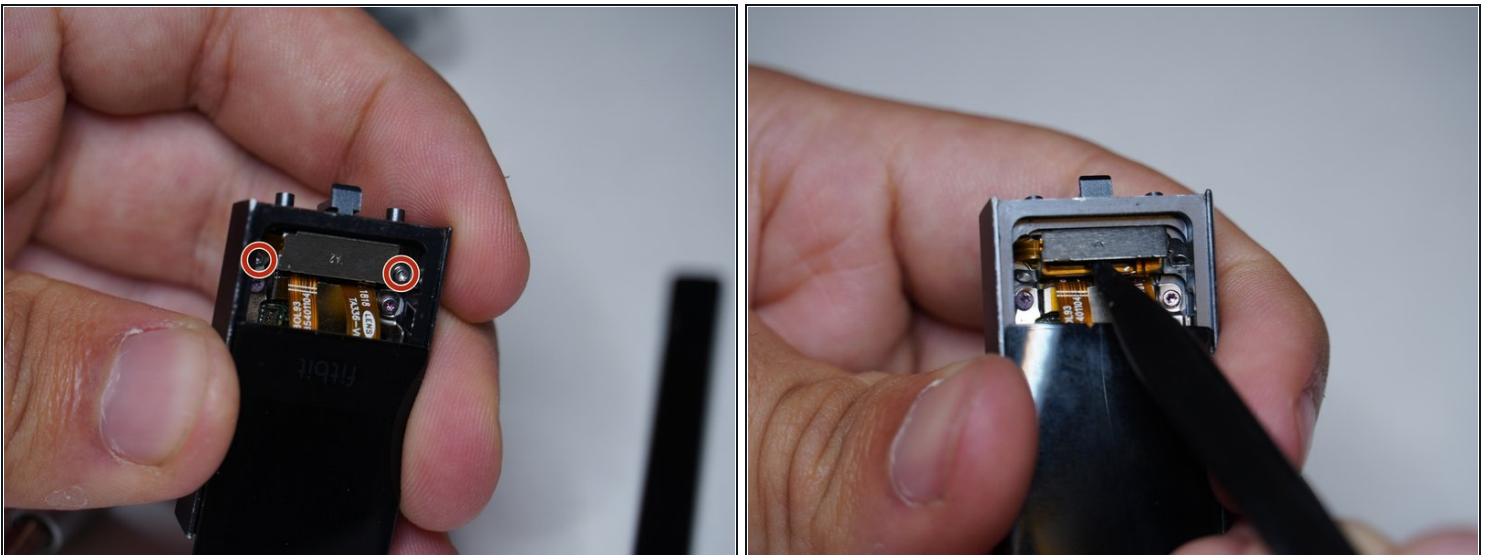


- Lift display up gently

⚠ The battery is attached with a little bit of adhesive so lift gently

- Remove battery connector

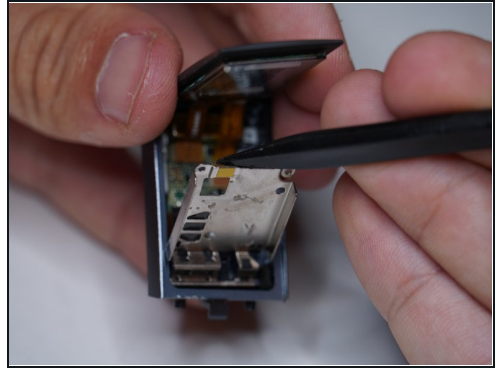
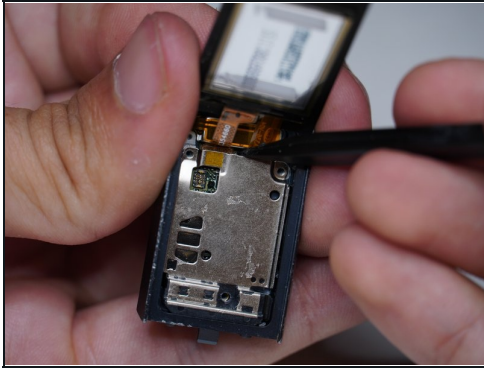
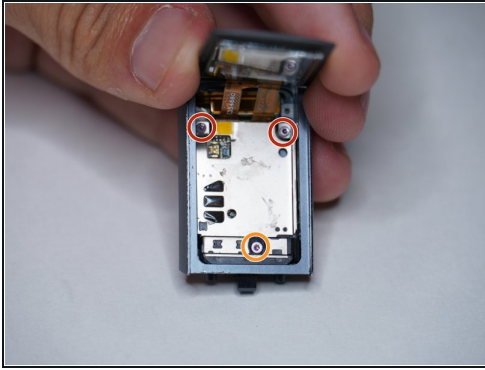
Step 5 — Vibrator Shield



- Remove both T2 screws

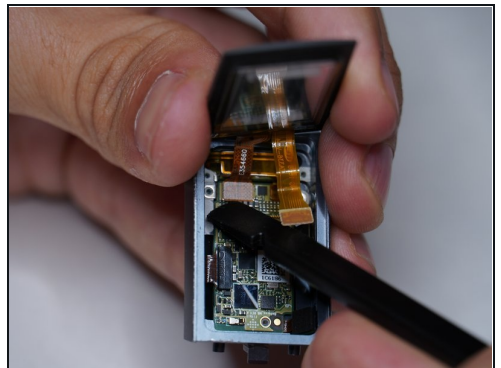
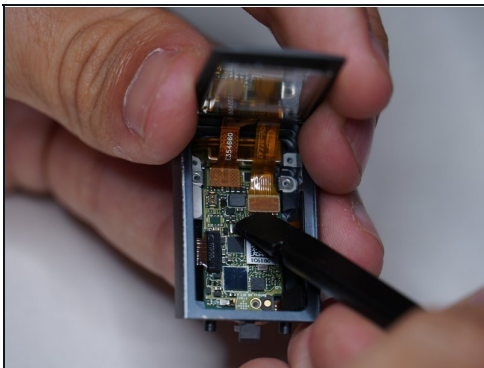
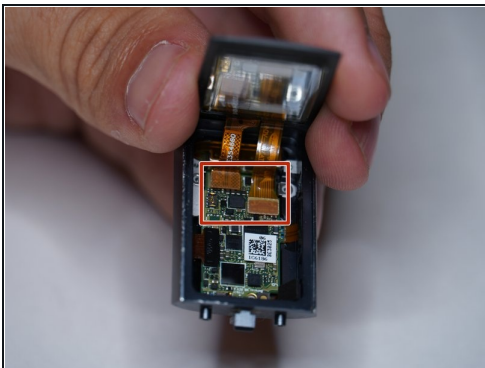
- Liftoff metal shield

Step 6 — Main Shield



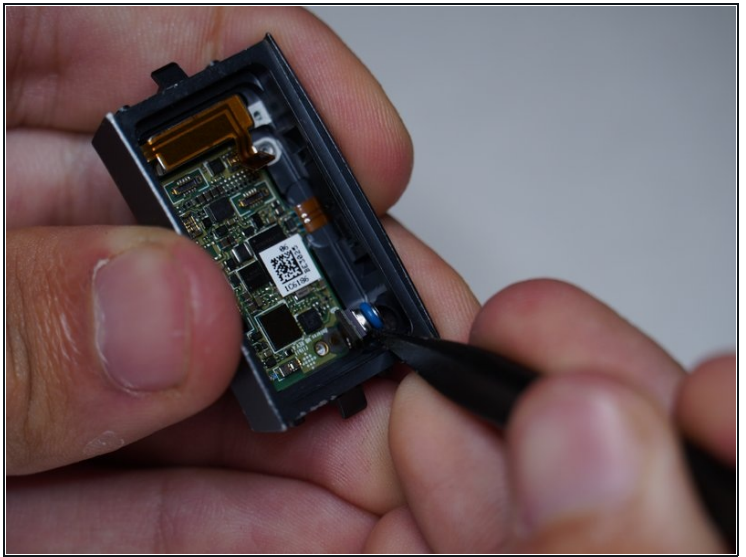
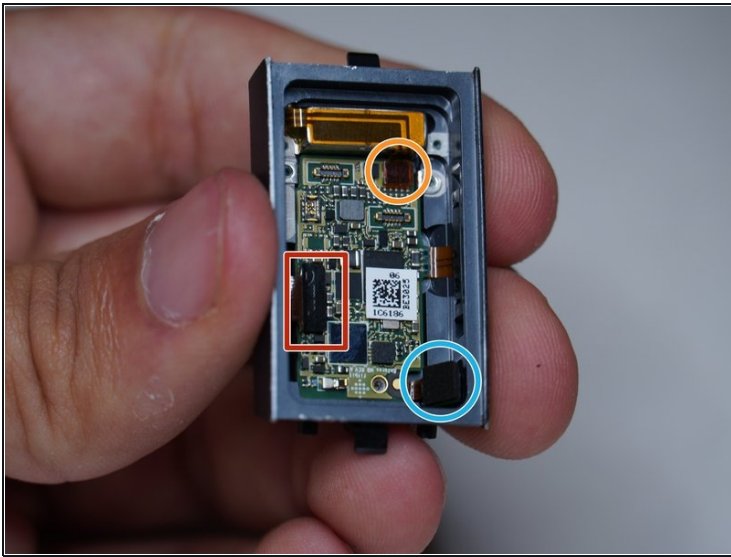
- Remove two T2 screws
- Remove T3 screw
- Liftoff metal shield

Step 7 — Display Connectors



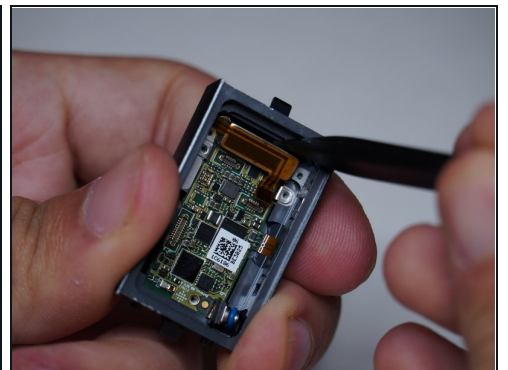
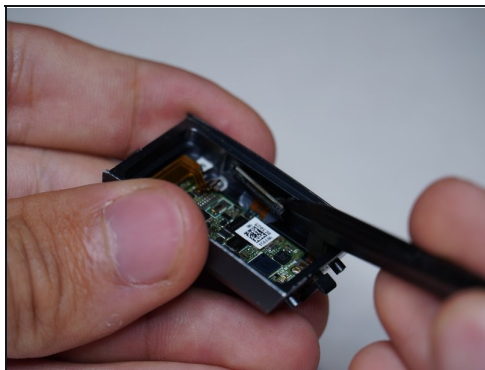
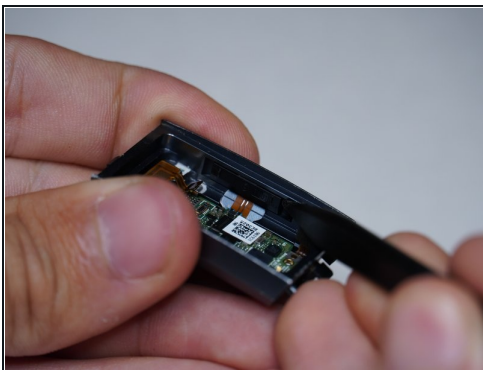
- Liftoff both display connectors

Step 8 — Disconnect Connectors and Altimeter



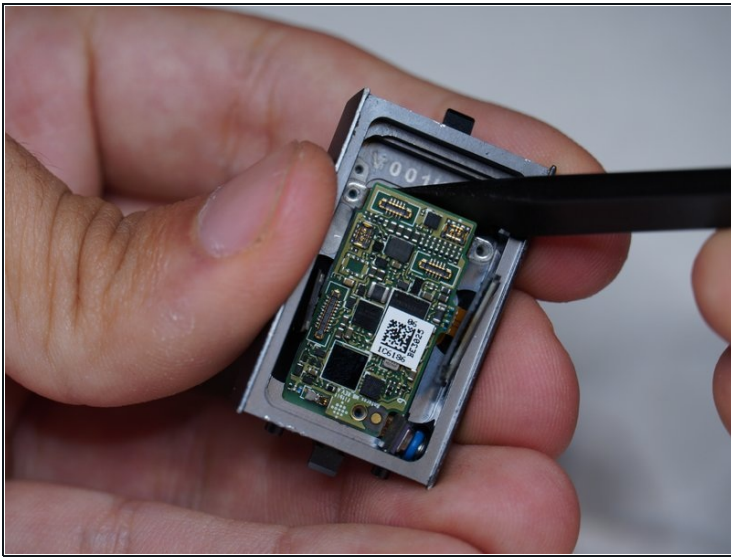
- Disconnect vibrator motor
- Disconnect heartrate and charging connector
- Remove altimeter

Step 9 — Side Button and Vibrator



- Remove button assembly from case
- Remove vibrator motor
 - ⓘ Has a slight bit of adhesive and is magnetic to the case

Step 10 — Motherboard



- Remove motherboard
 - It seems as if the heart rate sensor and charging pins are molded into the case, and I was not able to remove them
-