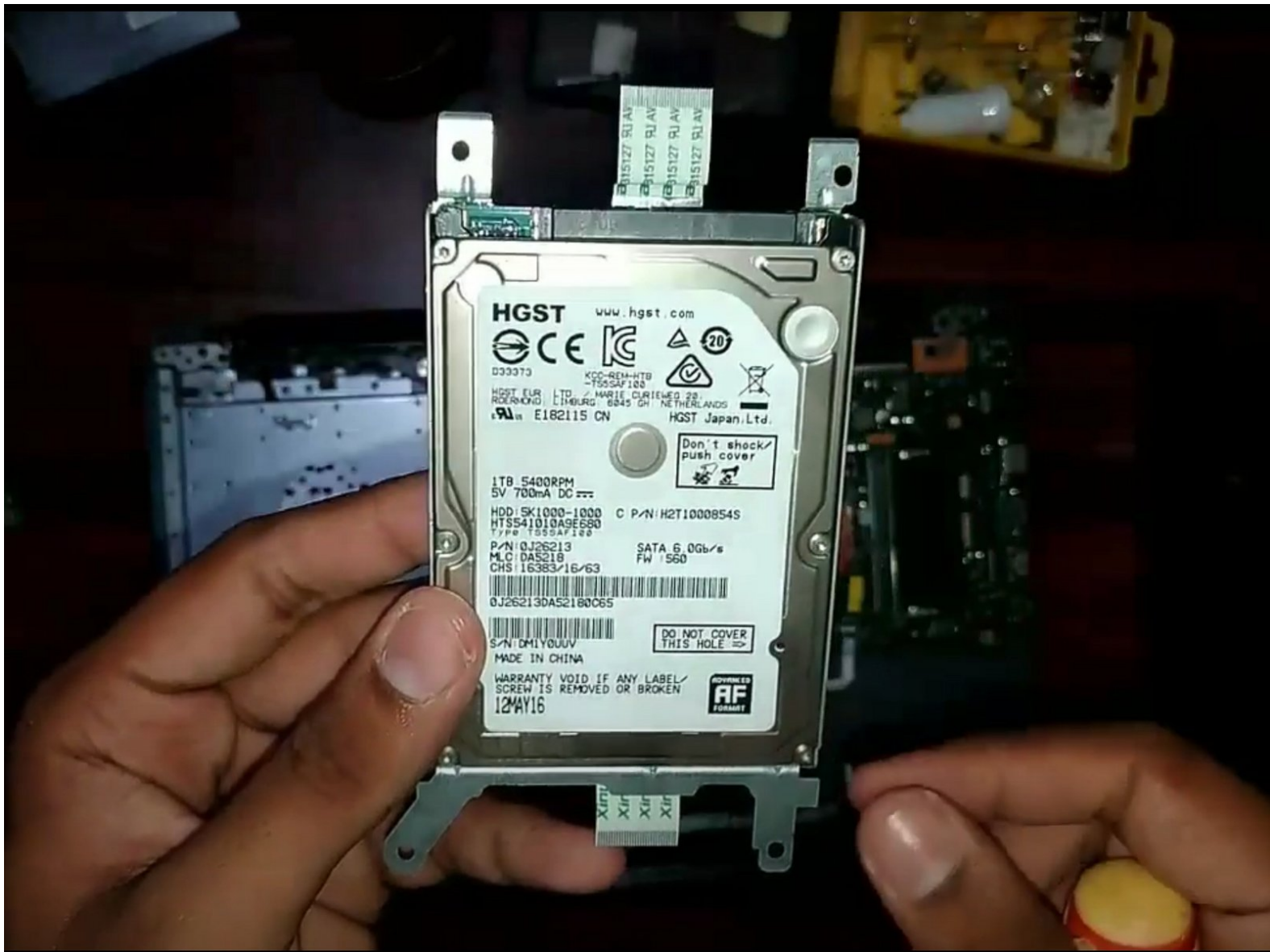




Asus R558UQ-DM513D SSD Replacement

If you want faster memory (SSD) or want to...

Written By: Deepanker Seth



INTRODUCTION

If you want faster memory (SSD) or want to increase the storage of your current Asus R558UQ-DM513D, follow this guide to replace your laptop's current Hard Disk Drive with a new SSD/HDD.

Make sure to save your current Hard Drive data on another device before you begin.

Make sure you turn off and unplug the laptop before starting the procedure.



TOOLS:

- [Phillips #0 Screwdriver](#) (1)



PARTS:

- [Crucial MX500 1 TB SSD](#) (1)
- [Crucial MX500 250 GB SSD](#) (1)
- [Crucial MX500 500 GB SSD](#) (1)
- [Crucial MX500 2 TB SSD](#) (1)

Step 1 — HDD (Hard Disk Drive)



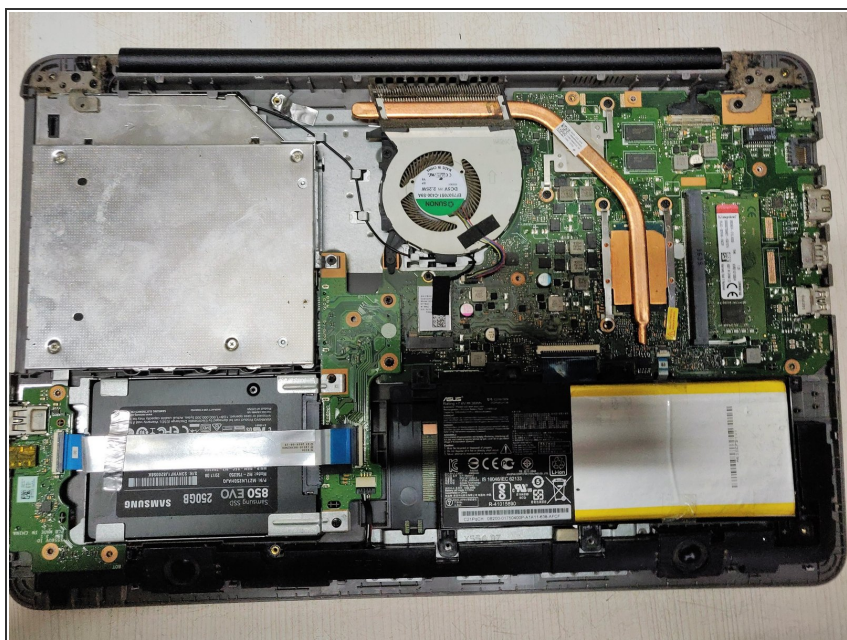
- Using the Phillips #0 screwdriver, remove the single 5 mm screw and remove the RAM access panel.
- Remove the ten 5 mm screws using the same Phillips #0 screwdriver.

Step 2



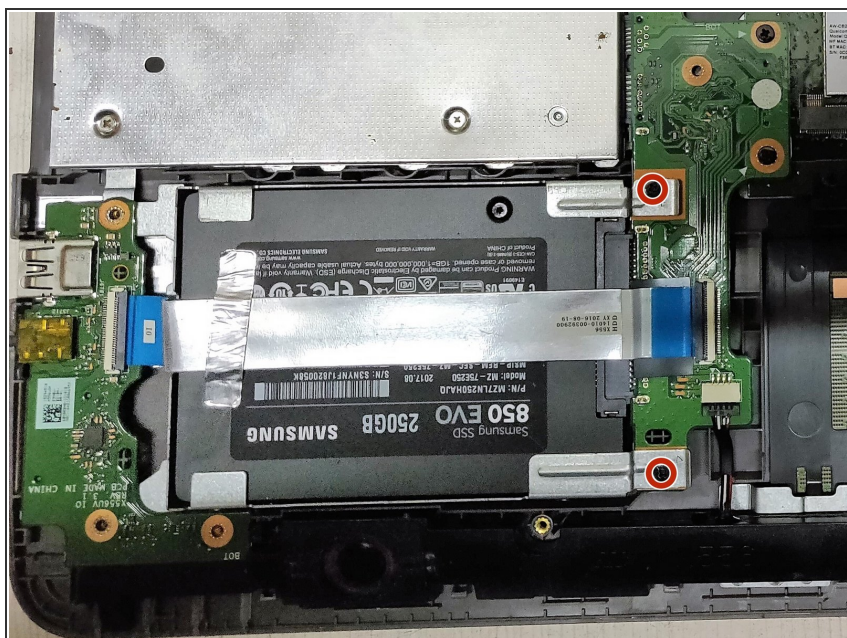
- Remove two 2 mm hidden screws using the Phillips #0 screwdriver.

Step 3



- Remove the back cover of the laptop to expose the inner components.

Step 4



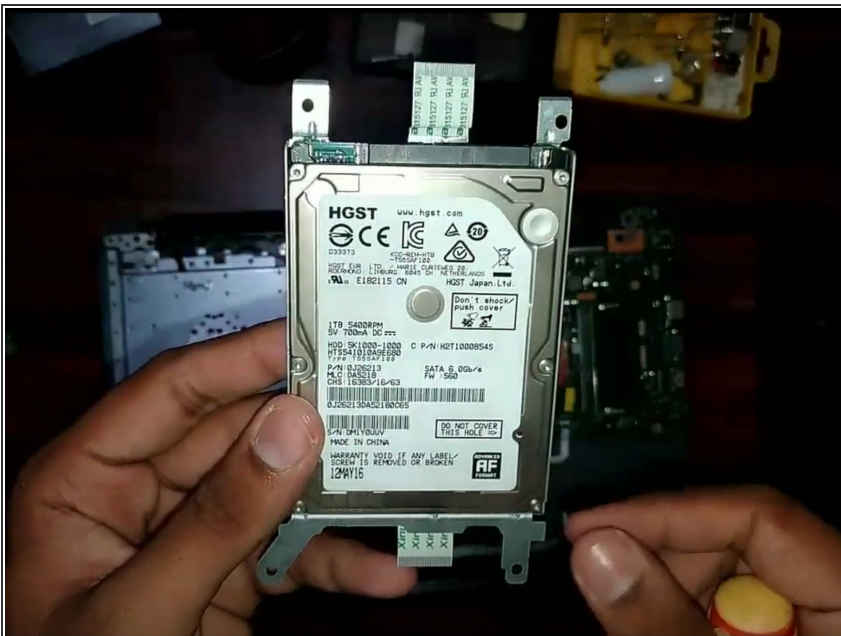
- Using the Phillips #0 screwdriver, remove the two 2 mm screws holding the HDD in place.

Step 5



- Gently take the left-side board containing the ports by simply sliding it in and taking it out while still connected to the wire.

Step 6



- Slide the HDD out.

To reassemble your device, follow these instructions in reverse order.