



HTC Droid Eris LCD Replacement

This guide will teach you how to...

Written By: Elizabeth Ofori



INTRODUCTION

This guide will teach you how to replace/install the LCD.

TOOLS:

[Tweezers](#) (1)
[T4 Torx Screwdriver](#) (1)
[iFixit Opening Tool](#) (1)
[Phillips #00 Screwdriver](#) (1)

PARTS:

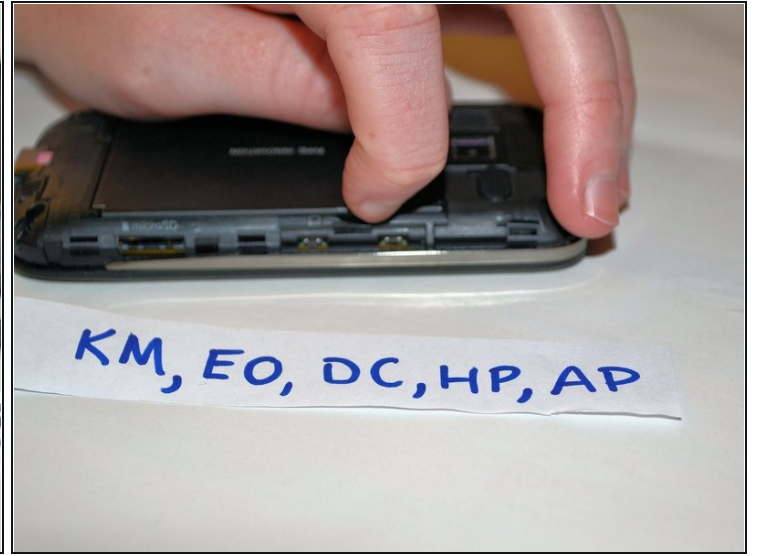
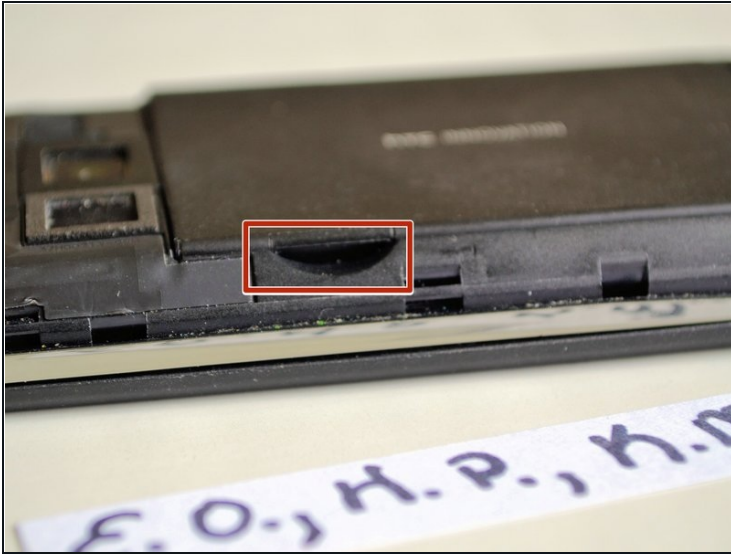
[HTC Droid Eris LCD Screen](#) (1)

Step 1 — Battery



- Place the device on a flat surface with the headphone outlet facing you.
- Place the tip of one of your fingers over the highlighted spot.
- ① Next, pull the back cover upwards. If this feels difficult, use the spudger.

Step 2



- Lay the device on a flat surface with the screen facing downward. Use one hand to hold the device in place.
 - With your free hand, stick one of your fingers in the marked gap. Pull gently upwards towards you.
- ① If the battery is not coming out with this technique, use the plastic opening tool.

Step 3 — Midframe



- At the lower right hand corner of the phone use one hand to hold the device in place and use your finger to push the micro SD card inwards until you hear a "click" sound and it pops out.
- If that method is difficult, use the plastic opening tool or spudger to push the micro SD card inwards and it will make a "click" sound and pop out.

Step 4



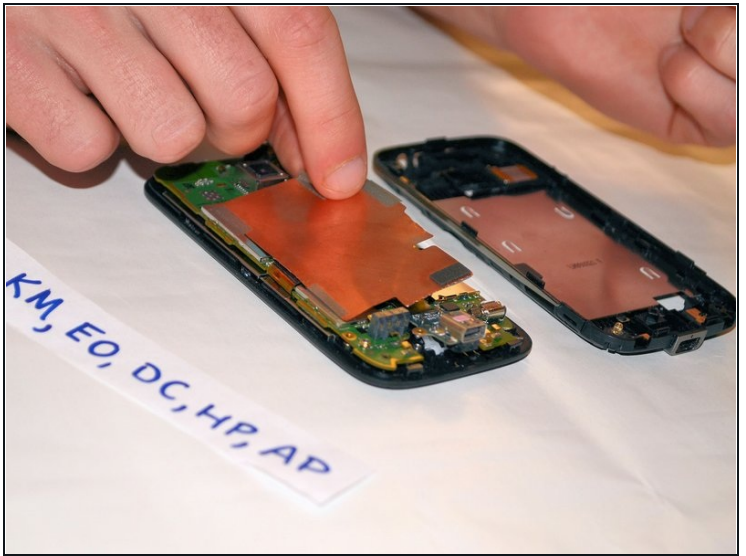
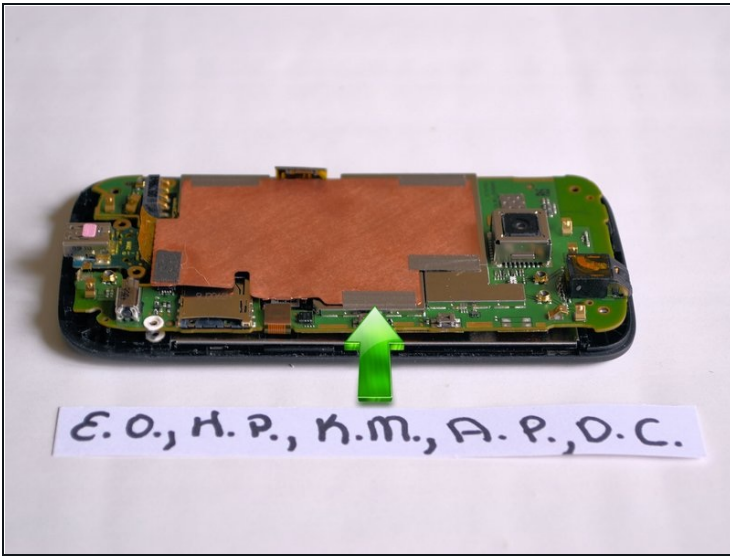
- Use the T4 screwdriver to remove the three .05 mm screws from the back cover.

Step 5



- Use the plastic opening tool and place it in the gap by the chrome bezels which are located on both sides of the device. Pull the plastic opening tool to pry plastic case apart. Start prying open the device and work around the seam of the phone in a clockwise direction.
- ⚠ **DON'T BREAK THE CLIPS** (you can damage the frame this way). Pry it gently until you hear it click and start to see it open.
- Remove the midframe.

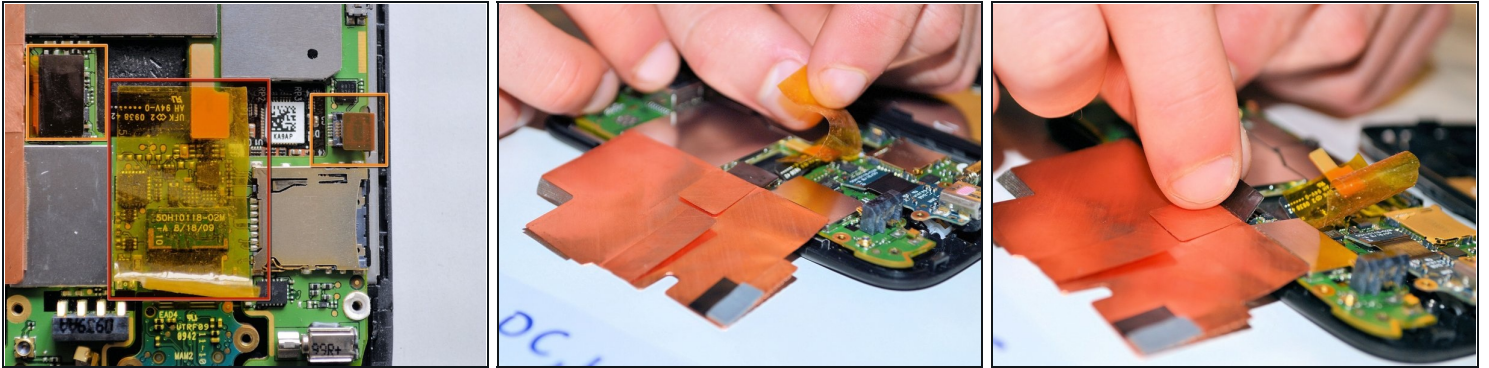
Step 6 — Motherboard



- With one hand holding the device in place, use your free hand to flip open the RF shield.
- Peel the three pieces of silver metallic tape off of the logic board.
- Do not peel off the two pieces of tape, that are located on the straightest edge of the RF shield closest to the edge of the phone.

⚠ Try not to damage the tape or the RF shield because they will need to be reused when reassembling the device.

Step 7

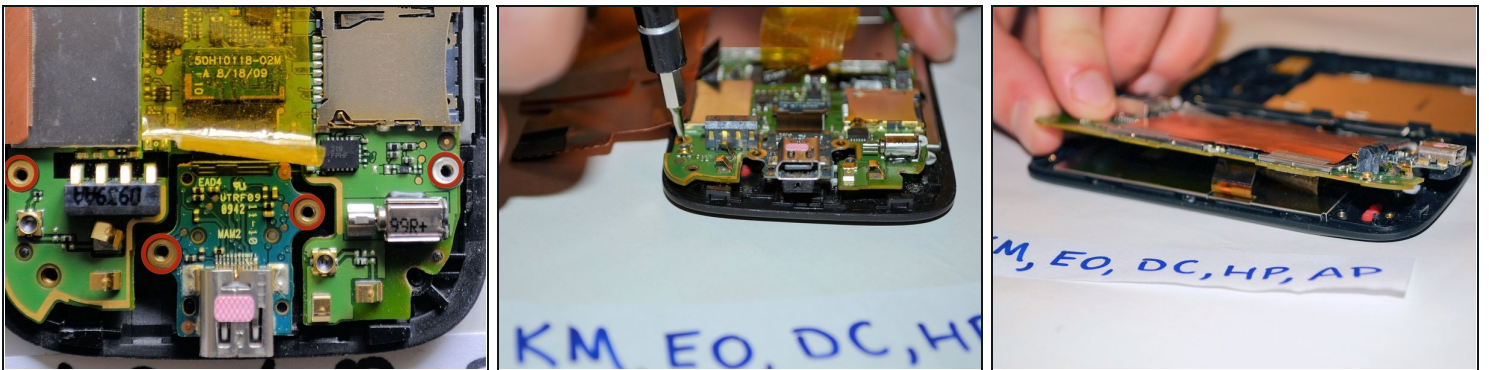


- Peel back the yellow tape. (located in the middle red highlighted box as shown)

⚠ When pulling off the tape make sure that you use your fingers to pull it up gently it has a connector attached to it (which is the light brown square on the top of the yellow tape) and the tape will be reused when reassembling the device.

- Use your fingers to peel the two connectors on the sides away from the motherboard.

Step 8

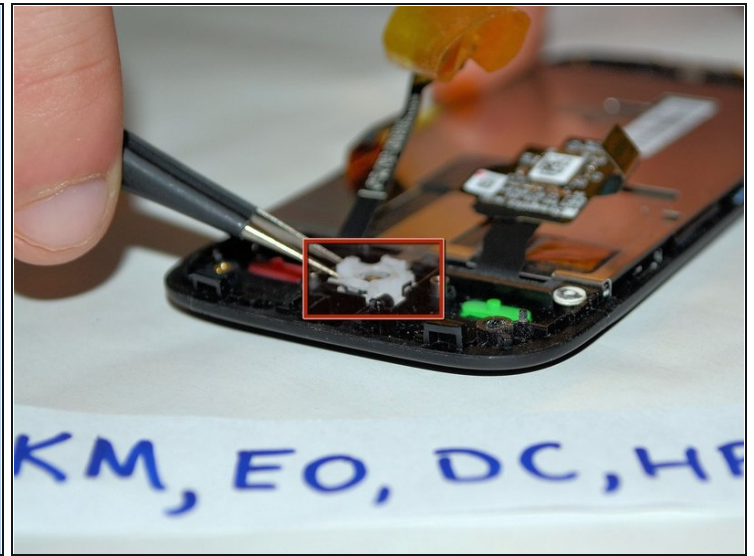


- Unscrew the four 1.2mm Phillips screws with the Phillips #00 screwdriver from the motherboard.

- Place the four screws in a safe place and then carefully lift up and remove the motherboard, then set it aside.

① Take a note of the moisture indicator located in the yellow rectangle on the bottom of the device in the second picture. If the moisture indicator is red then the device has water damage.

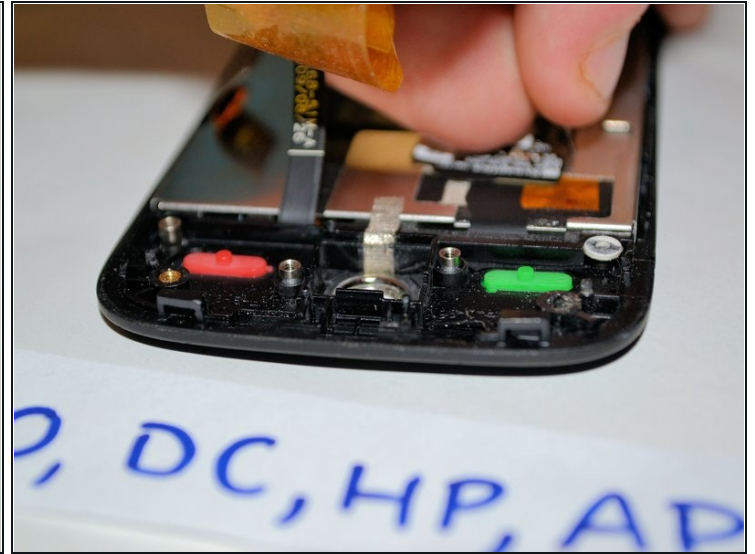
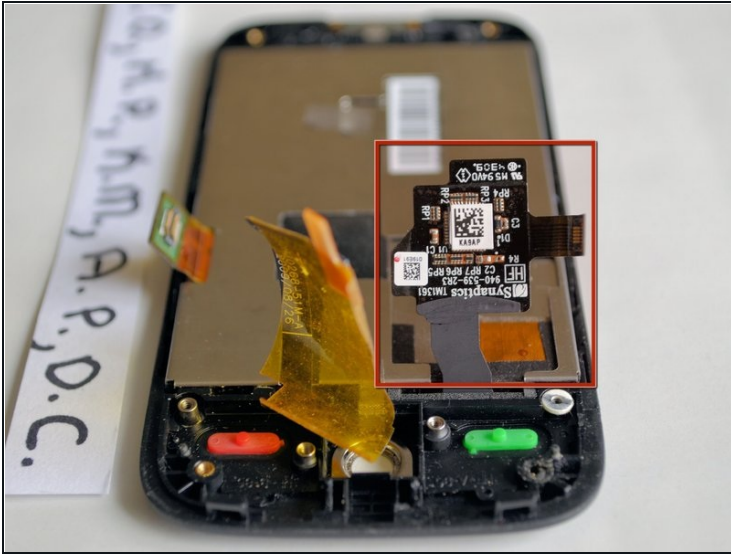
Step 9 — Trackball



- Use [tweezers](#) to grab the white sides of the trackball bracket and remove from the phone.
- If this method is unsuccessful then place the device over your hand (with the screen facing downward). Make sure that the trackball is positioned directly over your hand. Now turn the device over carefully and the trackball will fall out. That will be the only thing that is loose so make sure that you are able to catch the trackball when it falls.

⚠ When turning the device over be cautious! The trackball is extremely small and can be easily lost. Make sure that you place the trackball in a safe place.

Step 10 — LCD



- Peel the black interconnect cable away from the LCD.

⚠ *Be gentle when pulling the cable marker, it can snap in half easily!*

Step 11



- Stick the plastic opening tool in the gaps around the LCD and pry it up out of the phone.
 - Use the plastic opening tool to pry all of the corners of the LCD.
- ① Remove the LCD from the front panel.

To reassemble your device, follow these instructions in reverse order.