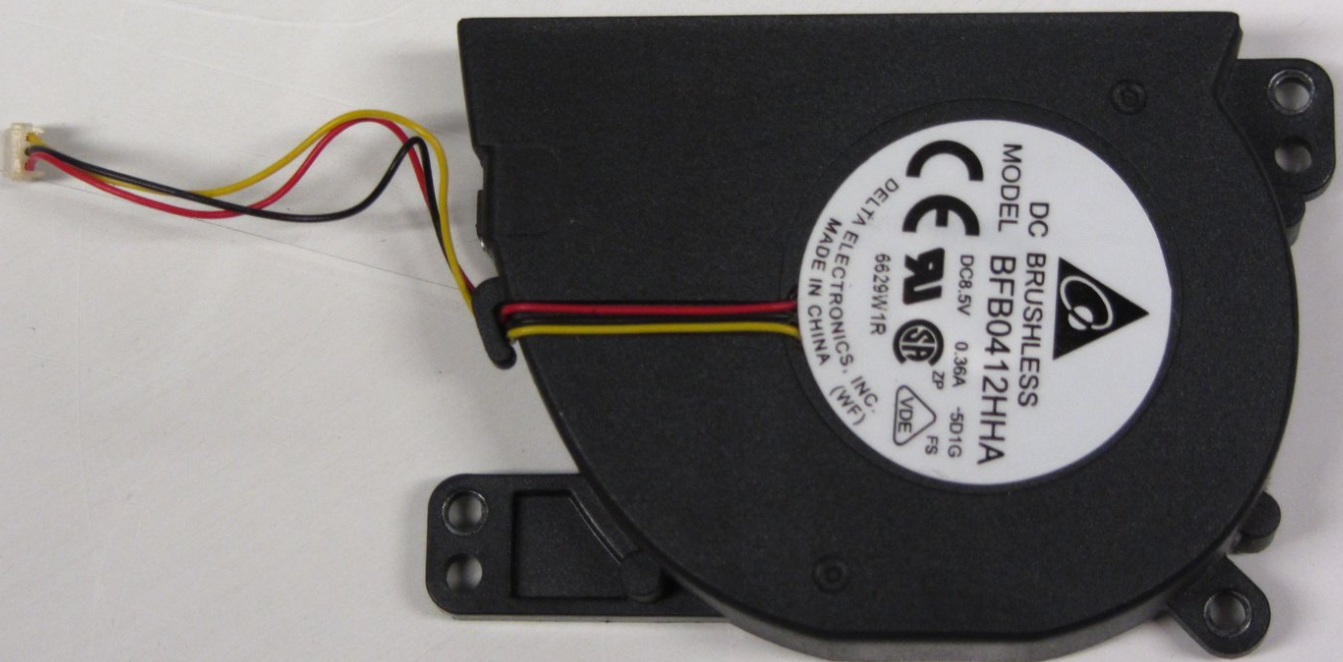




# PlayStation 2 Slimline SCPH-7500x Fan Replacement

This is a step-by-step guide on how to replace and install the fan in the PlayStation 2 Slimline

Written By: Jared Hirata



---

## INTRODUCTION

Use this guide to walk through a step-by-step process on how to properly replace a broken fan in the PlayStation 2 Slimline SCPH-7500x . The fan's purpose is to keep the other components in the PlayStation from overheating. You should hear the fan run intermittently while the PlayStation is on. If you do not hear a fan or the system is overheating try following this guide to replace it.



### TOOLS:

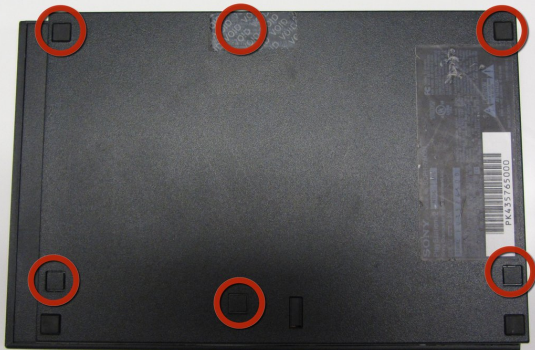
- [Tweezers](#) (1)
  - [Phillips #1 Screwdriver](#) (1)
  - [Spudger](#) (1)
-

## Step 1 — Removing Playstation 2 Slimline SCPH-7500x Outer Shell



- Turn off the PlayStation 2 and carefully unplug it from the power source. Also, it is important to eject the CD from the console before flipping the it upside down.

## Step 2



- Locate the six feet on the bottom of the PS2.
- ⓘ Five of these feet are in plain sight while the last foot is located under the black void sticker on the back of the device.
- ⓘ Some versions of the console, such as the PAL Version, may not have this sticker. In this case, the foot or the screw should be in plain sight.

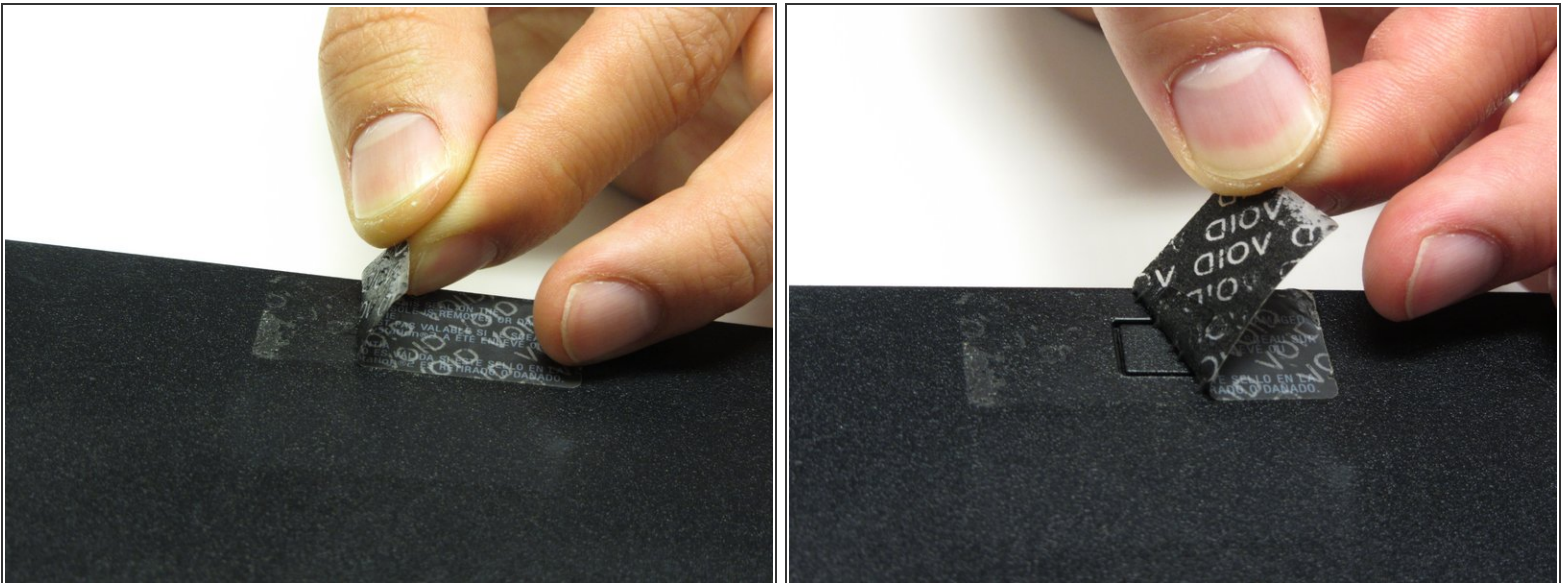


## Step 3



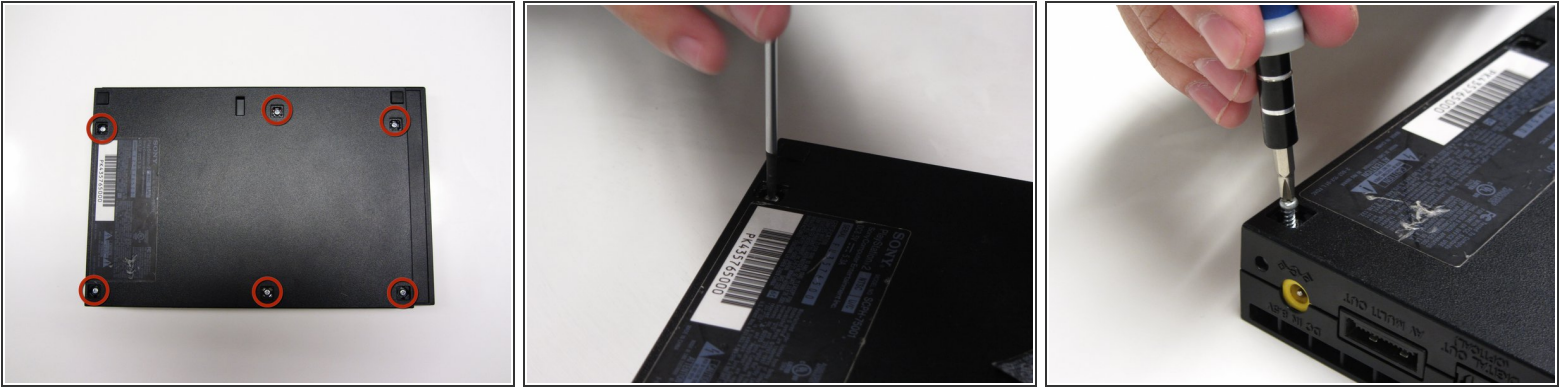
- Remove the five visible feet from the bottom of the device using a spudger.

## Step 4



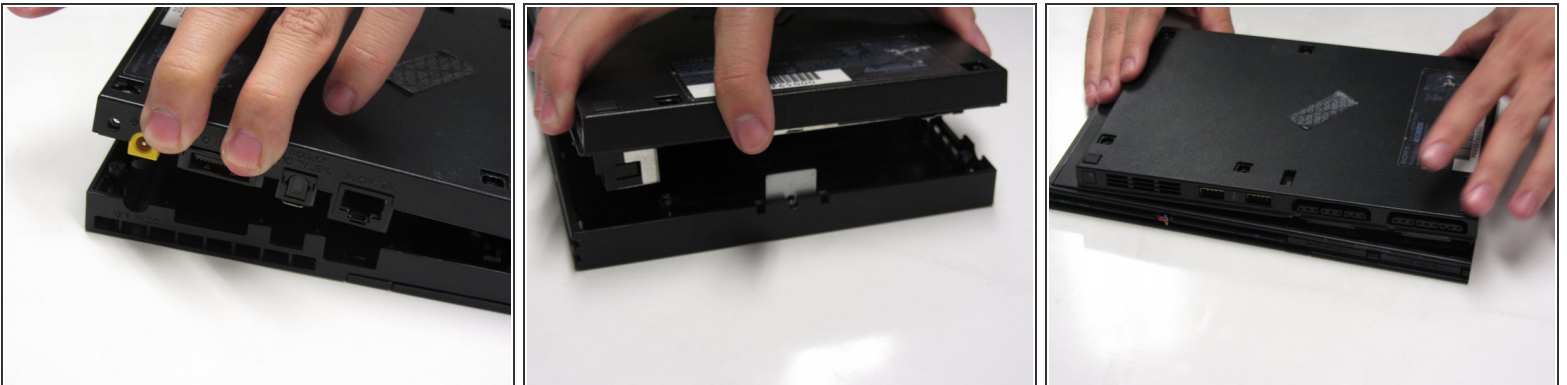
- Remove the sticker and then remove the 6th foot.

## Step 5



- After all of the feet have been removed, Use a Phillips #1 screwdriver to remove the six 4.0mm screws from the base of the PS2.

## Step 6

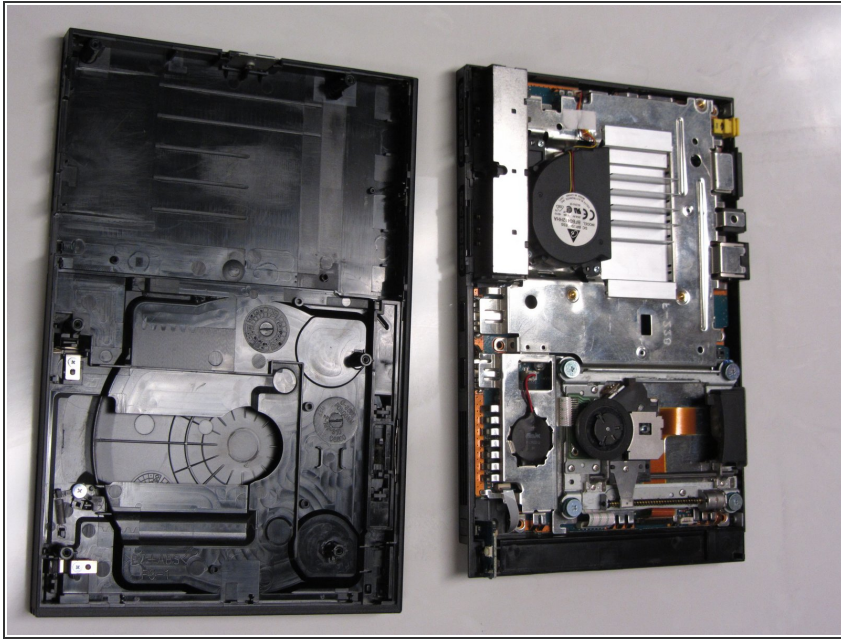


- Once all of the screws have been removed, pry apart the plastic covers. Start by lifting the side containing the power cable and Ethernet port. Then, lift the opposite side to fully separate the two sides.

⚠ You may need to apply some gentle force to detach the covers. Be careful not to break the plastic screw pins.

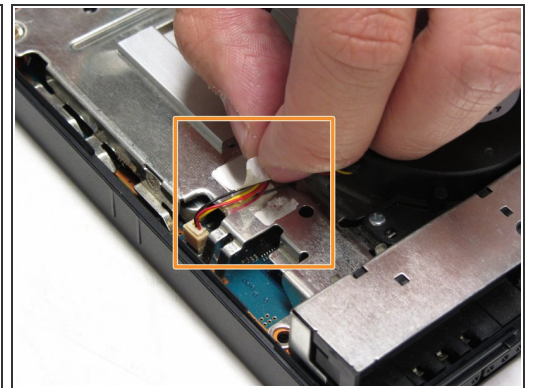
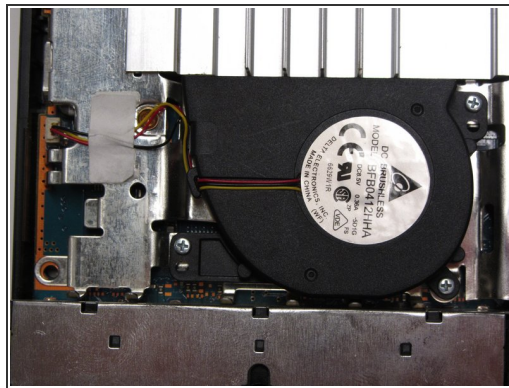
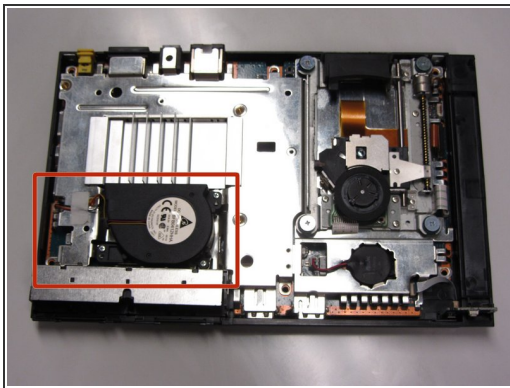


## Step 7



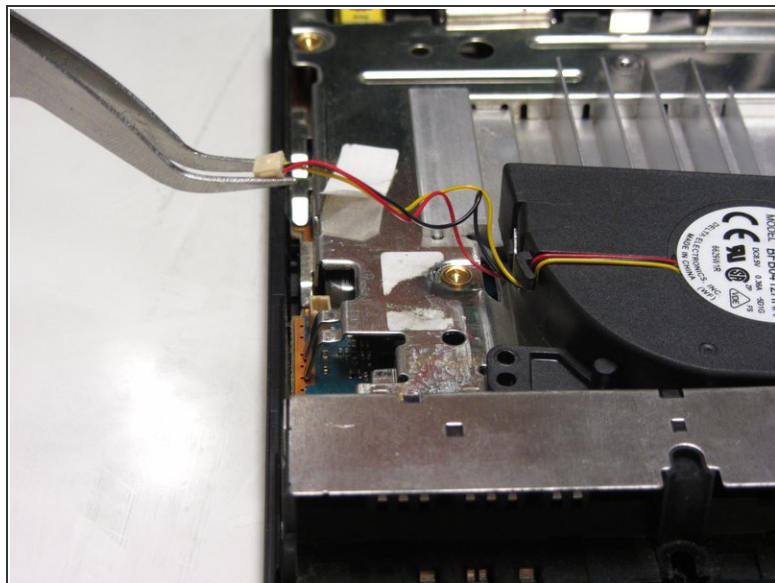
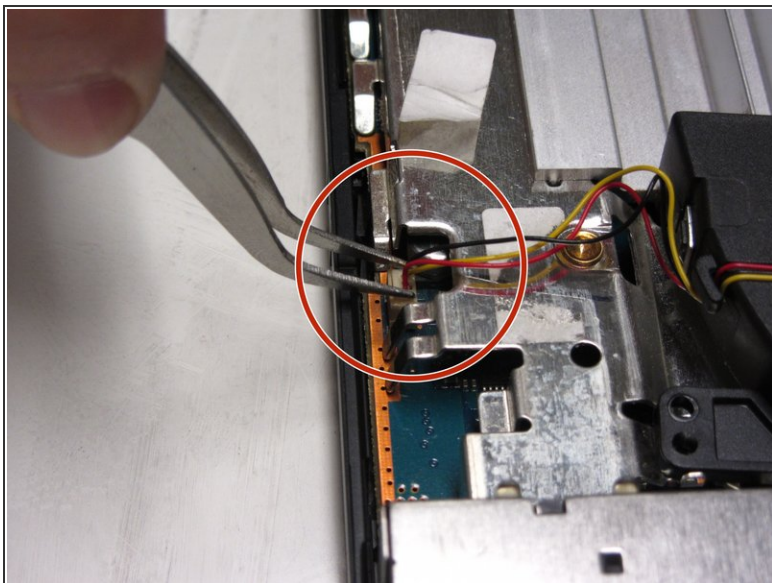
- If done correctly, you should have a fully detached plastic backing, revealing the electronic components of the PlayStation 2.

## Step 8 — Fan



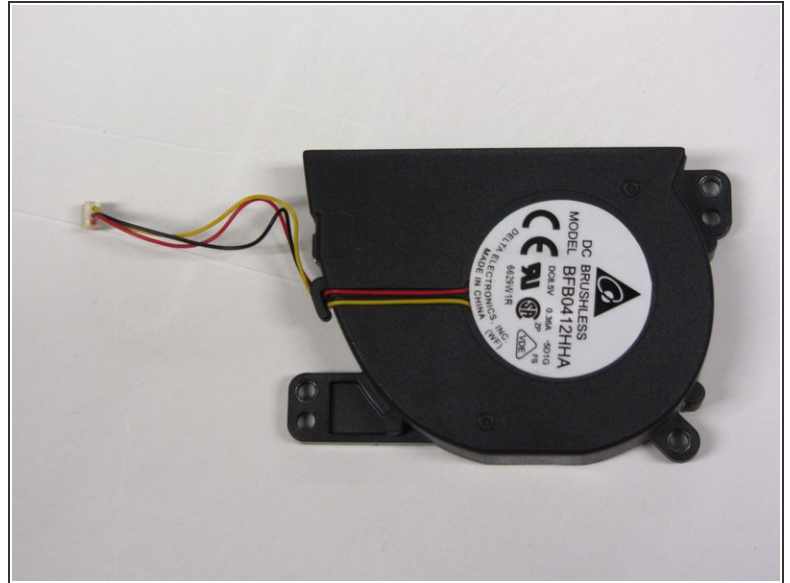
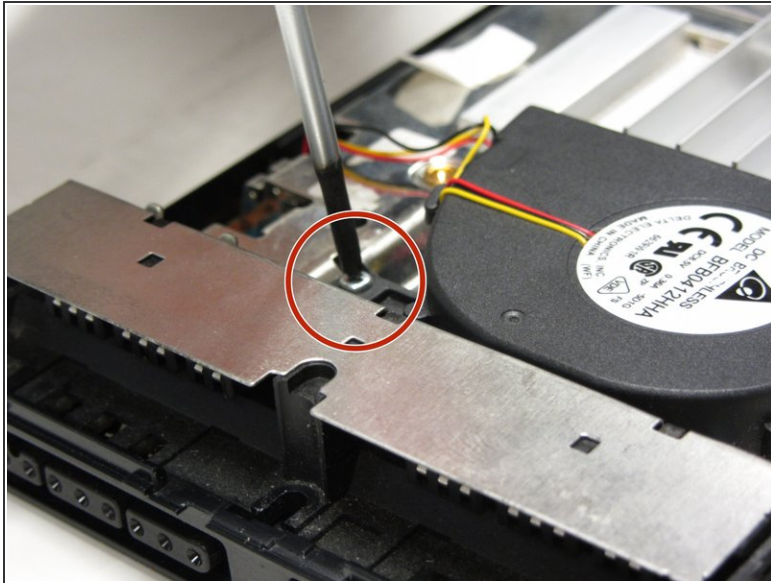
- Locate the fan component of the motherboard of the PS2.
- With your fingers or tweezers, peel off the sticker that holds down the fan's wiring.

## Step 9



- Detach the terminal (white covering) to the red and yellow cords from the motherboard to the fan with the use of tweezers.

## Step 10



- Locate and unscrew the three 1.6mm screws located next to the base of the fan.
- ⓘ They are located off the curved edge of the fan.
- Once you have removed the three screws, you are able to remove the fan from the PS2.

To reassemble your device, follow these instructions in reverse order.