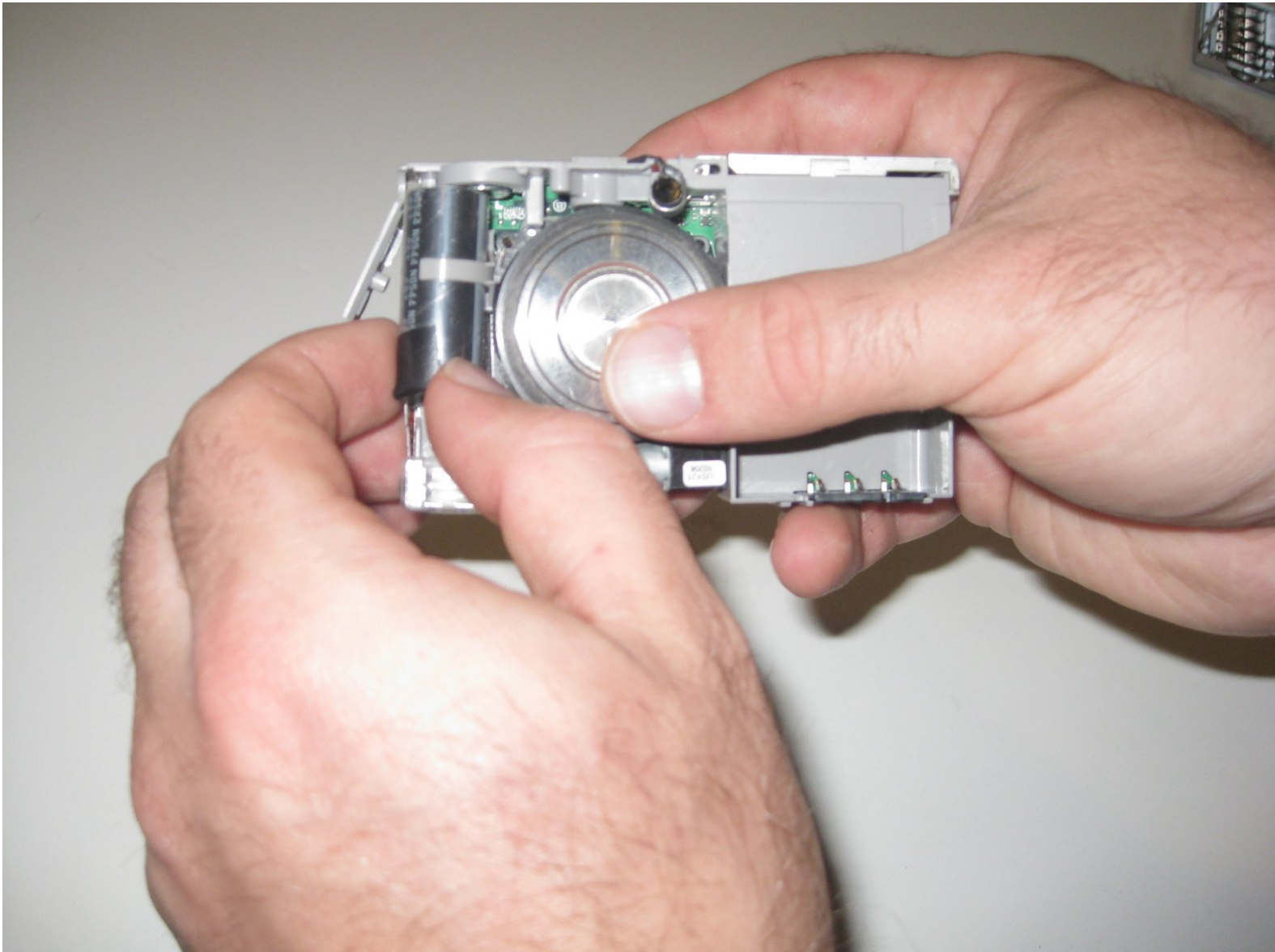




# Fujifilm Finepix F10 6.3 MP Flash Battery Replacement

If flash fails to work and other troubleshooting has failed, install a new flash battery.

Written By: Sarah Looper



---

## INTRODUCTION

The flash battery provides the power necessary to create the flash. This guide describes how to find and remove this battery in order to install a new one.



### TOOLS:

- [Phillips #00 Screwdriver](#) (1)
  - [Spudger](#) (1)
  - [Tri-wing Screwdriver](#) (1)
-

## Step 1 — Back Cover



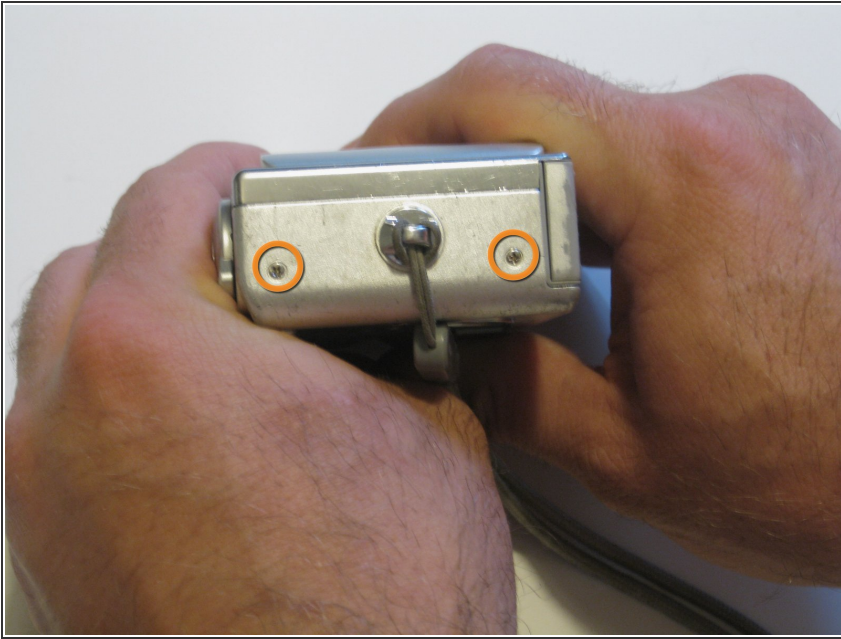
- Remove the screws from the bottom of the camera using the tri-wing screwdriver.
- Three 5.4 mm tri-head screws.

## Step 2



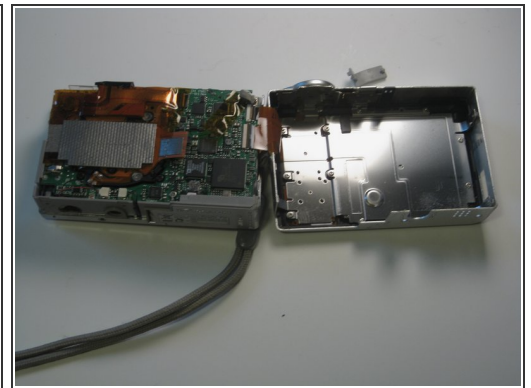
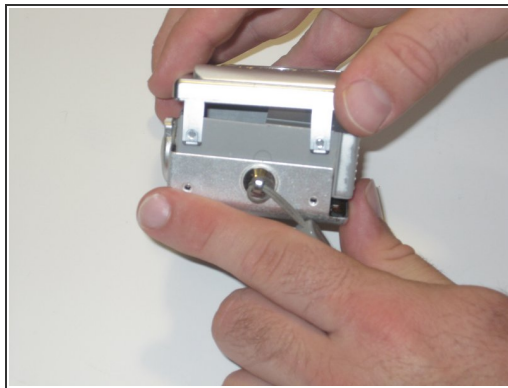
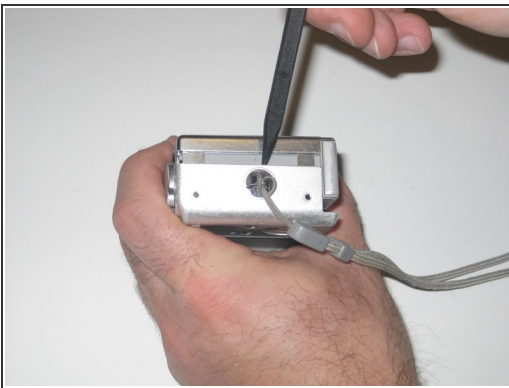
- Remove screws from charger side of camera using the Phillips 00 screwdriver.
- Two 3.3 mm Phillips #00 screws.

## Step 3



- Remove screws from wrist-strap side of camera using the Phillips 00 screwdriver.
- Two 3.3 mm Phillips #00 screws.

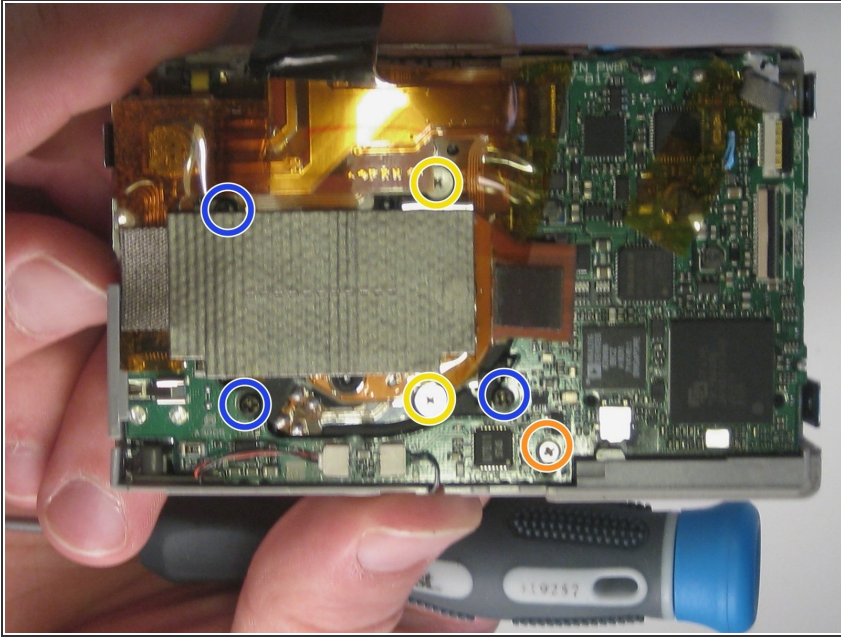
## Step 4



- Separate the front and back casing using the spudger.
- Gently pull apart the two casings.
- Pull the back casing away from the camera.

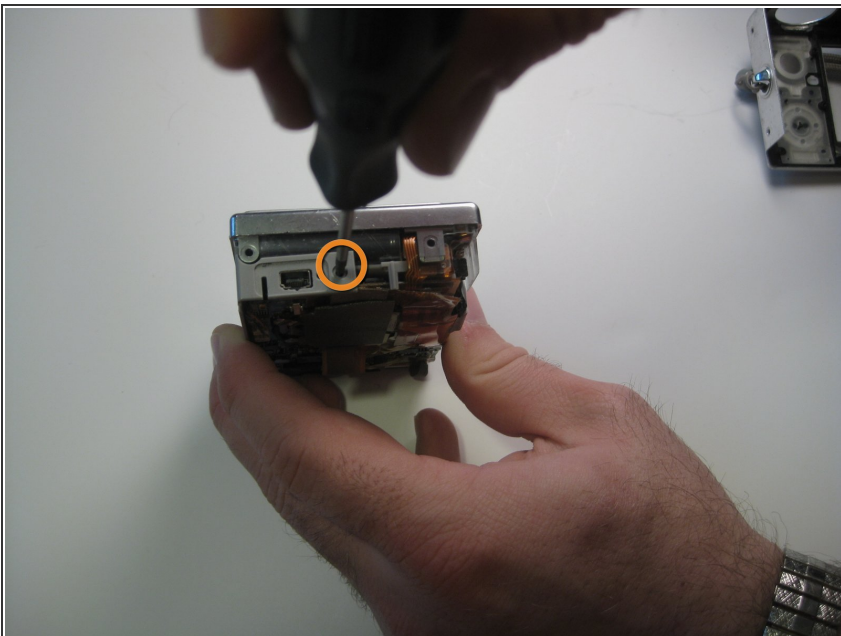


## Step 5 — Front cover



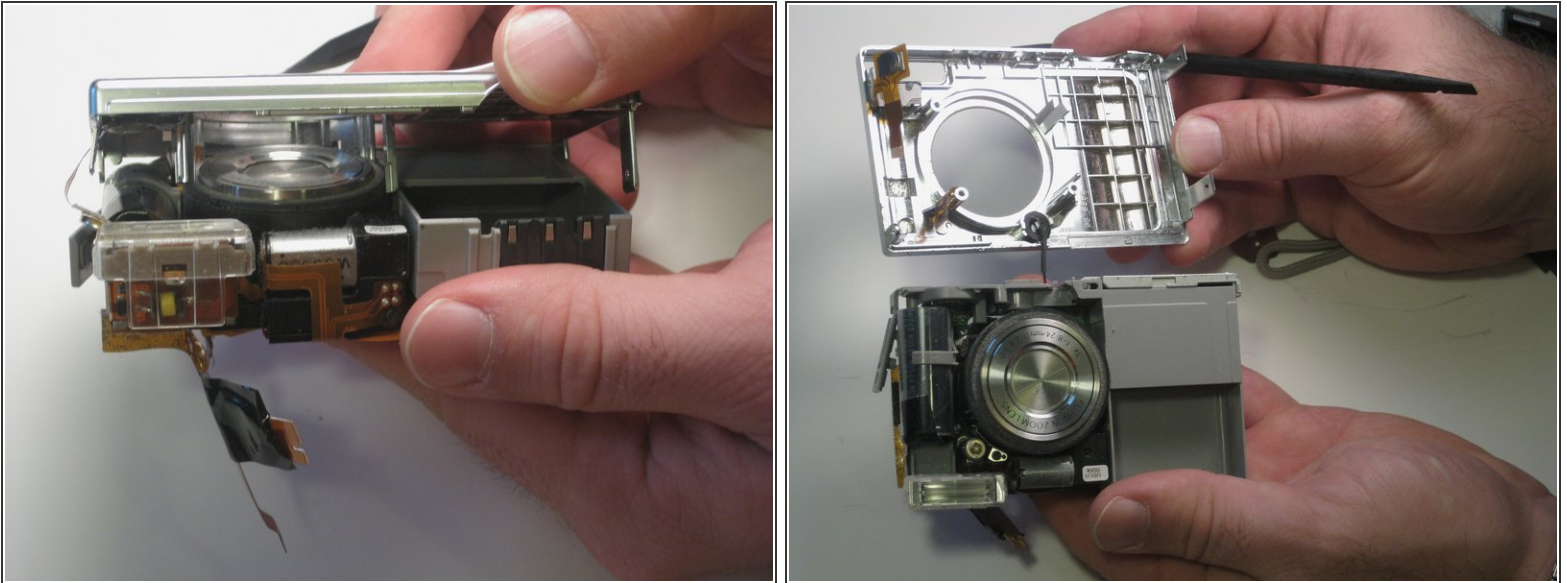
- Remove screws from motherboard using the Phillips 00 screwdriver.
  - Two 2.5 mm widehead Phillips screws
  - One 3.3 mm #00 Phillips screws
  - Three 2.5 mm #00 Phillips screws (black screws)

## Step 6



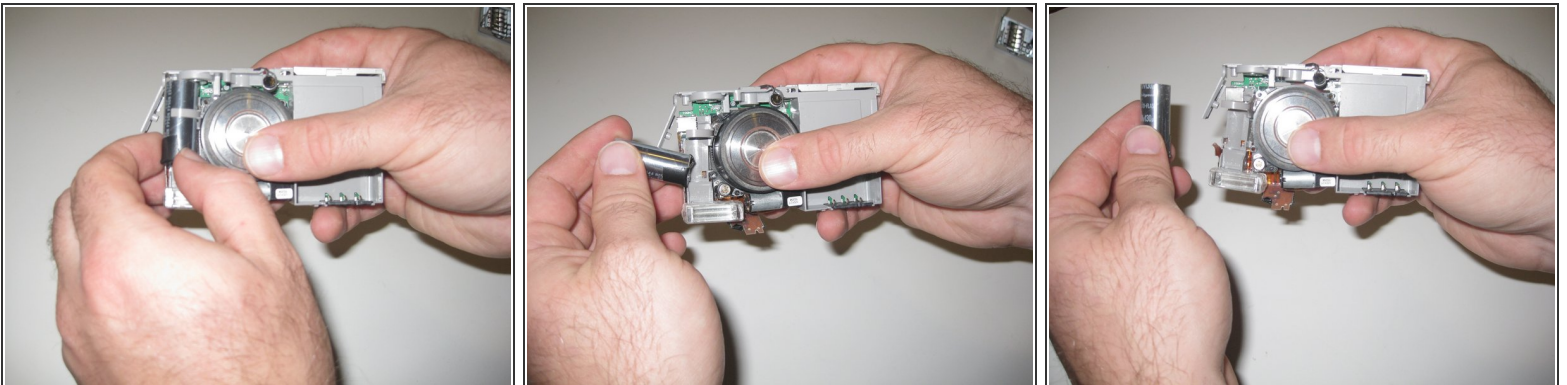
- Rotate the front cover clockwise onto its side and remove the single screw on the side using a Phillips 00 screwdriver.
  - Remove 3.3 mm #00 Phillips screw from the side of the front screen.

## Step 7



- Firmly grasp both the motherboard and front cover. Slowly pull the front cover away from the motherboard.
- ⓘ Do not be alarmed if it takes substantial pressure to separate the two.

## Step 8 — Flash Battery



- Gently remove battery from casing.

To reassemble your device, follow these instructions in reverse order.