



# Samsung Galaxy Watch3 Battery Replacement

This guide shows how to replace a worn-out or dead battery in a Samsung Galaxy Watch3.

Written By: Tobias Isakeit



## INTRODUCTION

Use this guide to replace a worn-out or dead battery in your Samsung Galaxy Watch3.

If your battery is swollen, [take appropriate precautions](#). For your safety, **discharge your battery below 25%** before disassembling your smartwatch. This reduces the risk of a dangerous thermal event if the battery is accidentally damaged during the repair.

You'll need replacement adhesive to reattach a new battery when reassembling the device.



### TOOLS:

- [ESD Safe Tweezers Blunt Nose](#) (1)
- [Tri-point Y00 Screwdriver](#) (1)
- [iFixit Opening Tool](#) (1)
- [Spudger](#) (1)
- [Phillips #00 Screwdriver](#) (1)



### PARTS:

- [Samsung Galaxy Watch 3 \(45mm\) Battery](#) (1)

## Step 1 — Unfasten the back cover screws



- Before starting repairs, take your watch off the charger and power it down.
- Use a Tri-point Y00 driver to unfasten the four screws on the back of the watch.
- ⓘ Don't worry about removing the screws, they will stay in place in the back cover.

## Step 2 — Wedge open the back cover



- Insert an opening tool between the back cover and the metal housing.
- Twist the opening tool to create a wider gap.

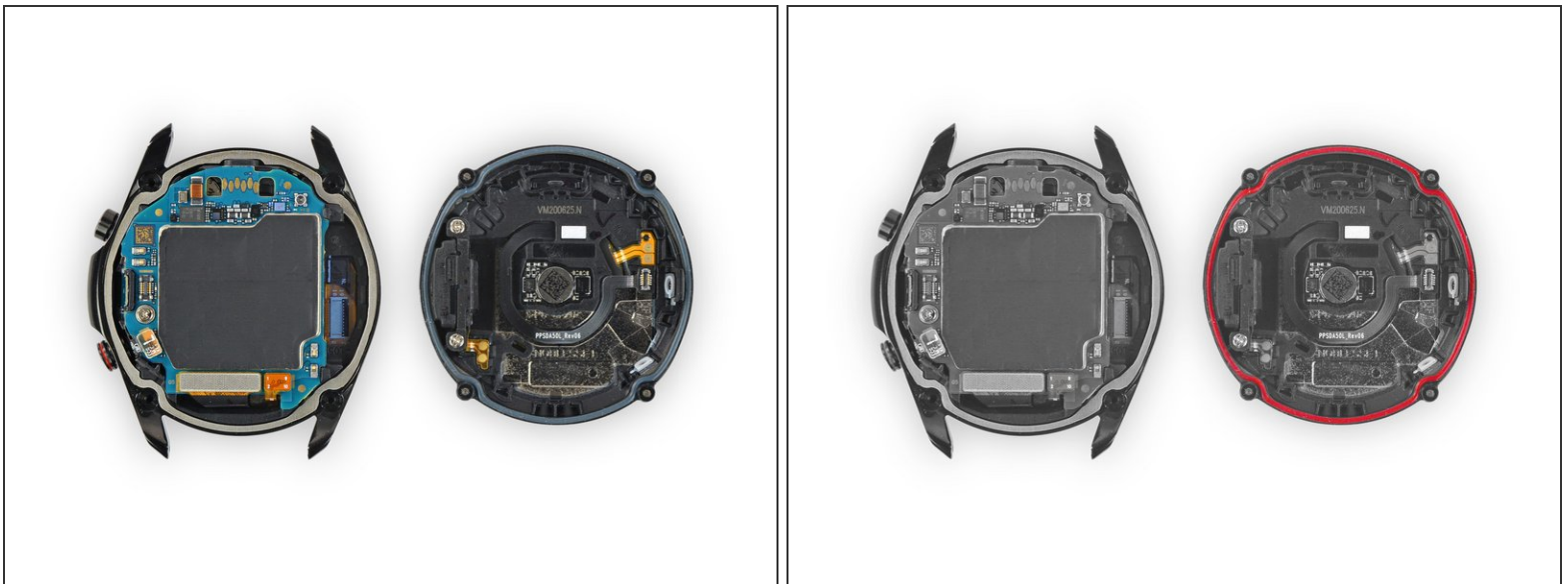
**⚠ Don't fully remove the back cover just yet. The sensor flex cable is still connected to the motherboard.**

### Step 3 — Disconnect the sensor flex cable



- Lay the watch face down.
- Carefully lift the back cover up from the edge with the buttons to access the sensor connector.
- Use the flat end of a spudger to pry up and disconnect the sensor flex cable from the motherboard.

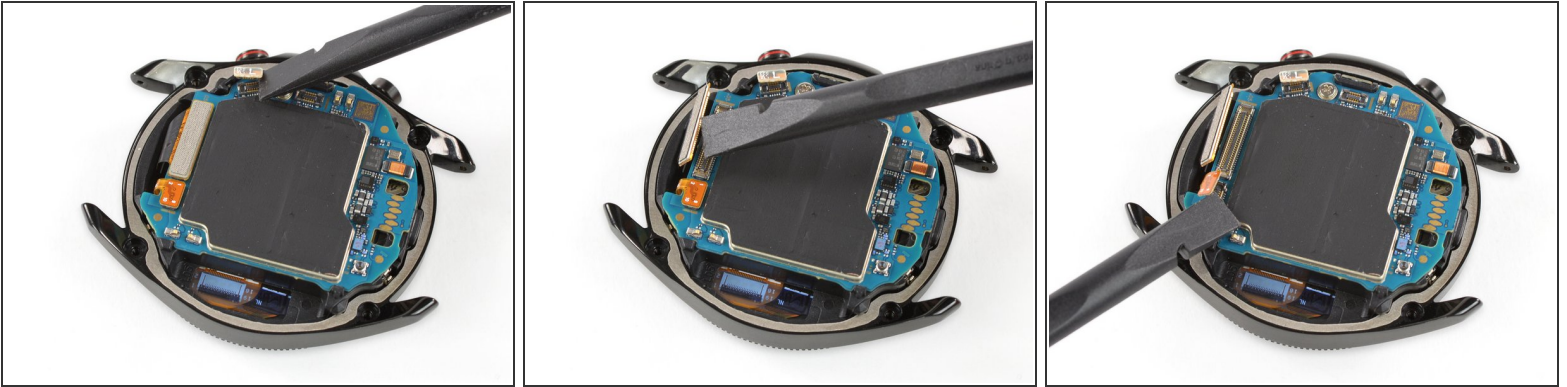
### Step 4 — Remove the back cover



- Remove the back cover.
- ☑ Make sure the rubber gasket (marked red) is undamaged. If damaged replace it with a new one during reassembly to maintain proper water resistance.



## Step 5 — Unplug the three connectors



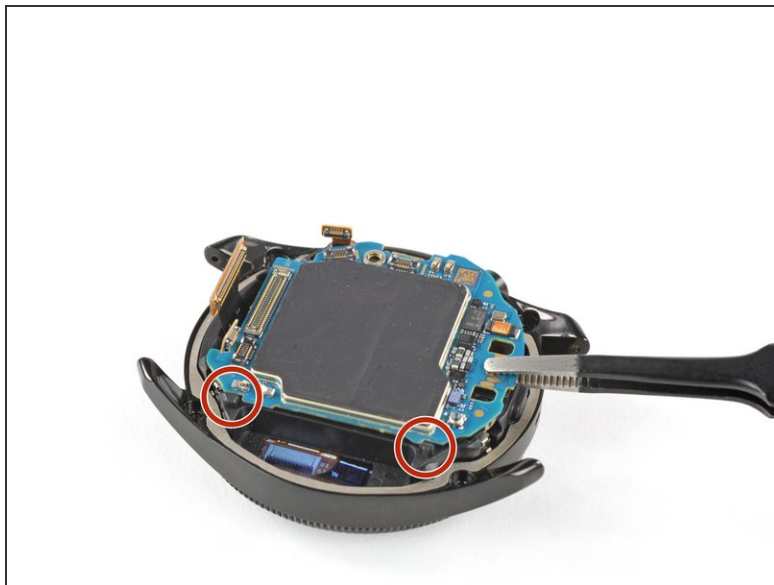
- Use the flat end of a spudger to disconnect the flex cables of the side buttons, the display and the hall sensor.

## Step 6 — Unfasten the motherboard screw



- Remove the Phillips #00 screw.

## Step 7 — Remove the motherboard



- The motherboard is held in place by two small plastic clips.
- Use a pair of blunt tweezers to lift the motherboard out from underneath the plastic clips towards the buttons.
- Remove the motherboard.

## Step 8 — Lever up the battery



- Place the flat end of a prydriver in the small gap between the plastic frame and the battery, opposite to the display cable.
- Carefully lever the battery up and out of its recess.

ⓘ The battery is adhered to the core with light adhesive, so take your time.

⚠ Don't try to remove the battery completely yet, as its connector is still adhered to the core.

## Step 9 — Remove the battery



- Lift the battery up a little in order to access its glued down connector cable.
- Use a pair of blunt tweezers to lift up the battery connector which is secured with some light adhesive.
- ☒ You will most likely be able to re-use the adhesive to fix the new battery in place. If not replace it with [double sided or pre-cut adhesive tape](#).
- Remove the battery.



**If possible**, turn on your device and **test your repair** before installing new adhesive and resealing.

Secure the new battery with pre-cut adhesive or double-sided adhesive tape. In order to position it correctly, apply the new adhesive into the device at the places where the old adhesive was located, not directly onto the battery.

To reassemble your device, **follow these instructions in reverse order**.

For optimal performance, **calibrate your newly installed battery**: Charge it to 100% and keep charging it for at least 2 more hours. Then use your device until it shuts off due to low battery. Finally, charge it uninterrupted to 100%.

Repair didn't go as planned? Try some [basic troubleshooting](#), or ask our [Answers community](#) for help.

Take your e-waste to an [R2 or e-Stewards certified recycler](#).