



# Core Assembly Removal

This guide shows how to remove the core assembly in the Samsung Galaxy Watch3.

Written By: Tobias Isakeit



---

# INTRODUCTION

Use this guide to remove the core assembly in the Samsung Galaxy Watch3.

---



## TOOLS:

- [iFixit Opening Tools](#) (1)
  - [Tri-point Y00 Screwdriver](#) (1)
  - [Spudger](#) (1)
-

## Step 1 — Unfasten the back cover screws



- Before starting repairs, take your watch off the charger and power it down.
- Use a Tri-point Y00 driver to unfasten the four screws on the back of the watch.
- ⓘ Don't worry about removing the screws, they will stay in place in the back cover.

## Step 2 — Wedge open the back cover



- Insert an opening tool between the back cover and the metal housing.
- Twist the opening tool to create a wider gap.

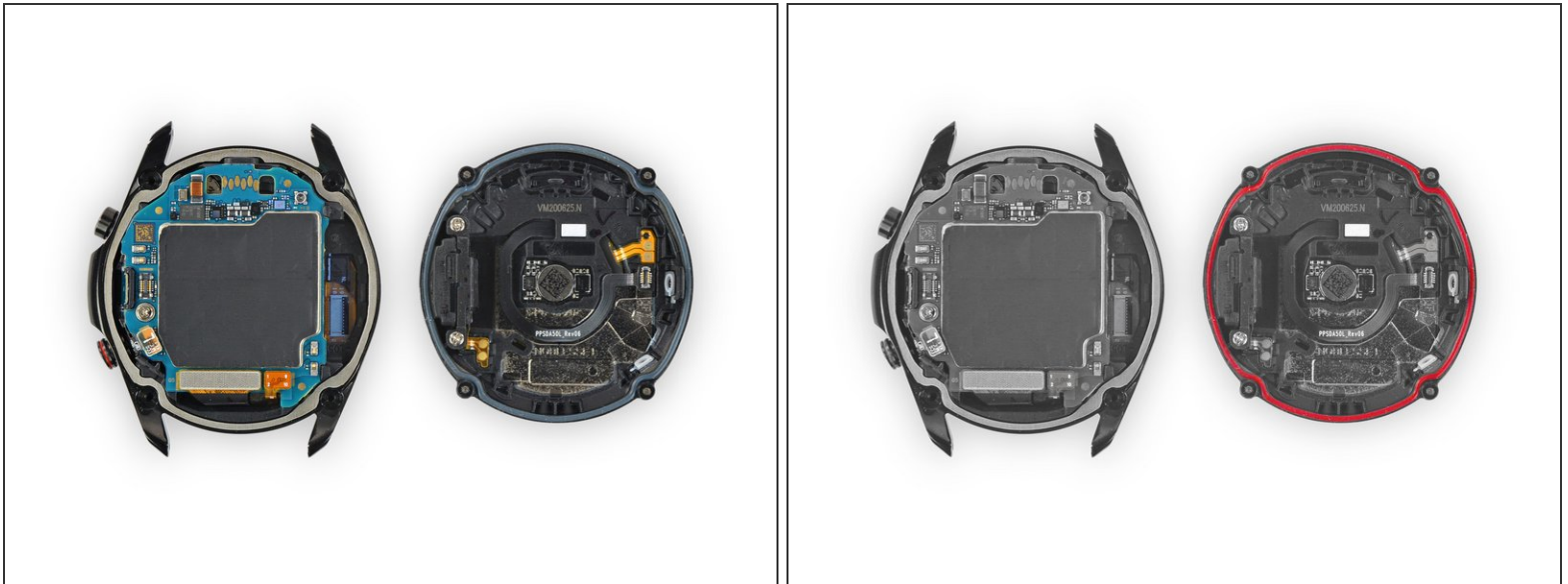
⚠ Don't fully remove the back cover just yet. The sensor flex cable is still connected to the motherboard.

### Step 3 — Disconnect the sensor flex cable



- Lay the watch face down.
- Carefully lift the back cover up from the edge with the buttons to access the sensor connector.
- Use the flat end of a spudger to pry up and disconnect the sensor flex cable from the motherboard.

### Step 4 — Remove the back cover



- Remove the back cover.
- ☑ Make sure the rubber gasket (marked red) is undamaged. If damaged replace it with a new one during reassembly to maintain proper water resistance.

## Step 5 — Unplug the display connector



- Use the flat end of a spudger to pry up and disconnect the display flex cable from the motherboard.



## Step 6 — Loosen the core assembly



- i** The core's plastic frame fits tightly within the watch's metal housing.
- Place the corner of the flat end of a spudger in the small opening of the barometric sensor, on the opposite side of the display connector.
  - Twist and tilt the spudger to lever the core assembly out of the metal housing.

## Step 7 — Remove the core assembly



- Carefully thread the display flex cable through the gap on the core's plastic frame.
- Remove the core assembly.

To reassemble your device, follow these instructions in reverse order.