



How to Repair Apple Wireless Keyboard A1314

- Doesn't Turn On

Apple Wireless Keyboard (A1314) how to change batteries, how to remove the logic board, how to fix battery negative line or blinking green light

Written By: ZFix



INTRODUCTION

[video: <https://www.youtube.com/watch?v=JWNDD7bji7U>]



TOOLS:

- [Phillips #0 Screwdriver](#) (1)
 - [Tweezers](#) (1)
 - [High Content Rubbing Alcohol](#) (1)
 - [Cotton Swab](#) (1)
-

Step 1 — How to Repair Apple Wireless Keyboard A1314 - Doesn't Turn On



- As you can see from the photo, the negative pole of the battery is connected to the main board through the aluminum body of the keyboard.
- There are two contact areas:
 - Between the battery cover and the KB aluminum body
 - Between the power button assemble and the KB aluminum body
- If the device has a power problem, we need to check and clean these two places

Step 2 — Battery replacement



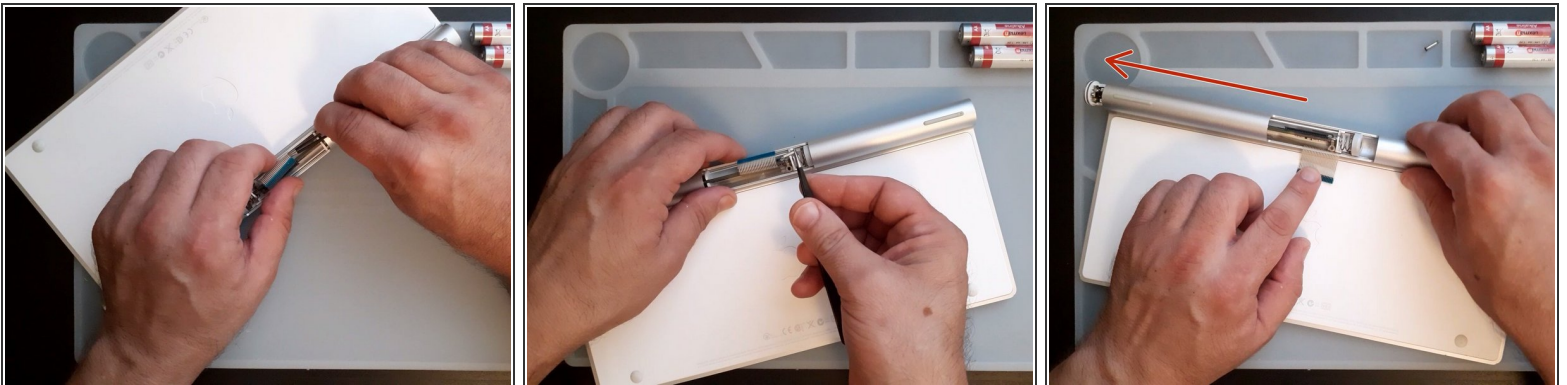
- Use a Coin to remove the metal battery screw cover
- Change the batteries (AA) and test the keyboard
- If the keyboard does not work, go to the next step

Step 3 — Cleaning battery cover area




- Use cotton buds, Toothpicks and Isopropyl Alcohol to clean the contact area and the battery cap.
- Test the device and if the keyboard does not work, go to the next step

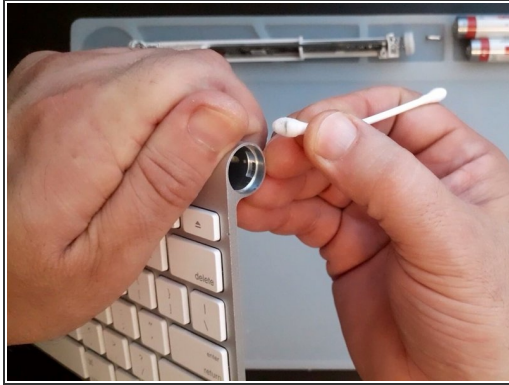
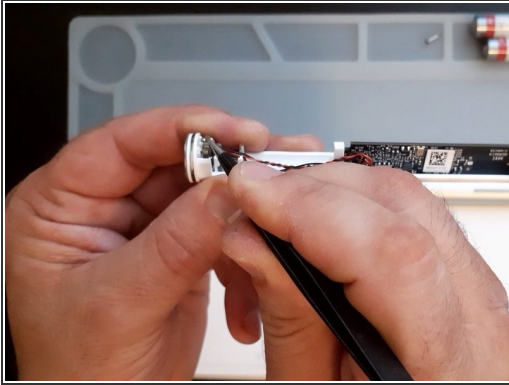
Step 4 — Logic Board Removal Part 1



- Remove the plastic cap from the middle on the tube and disconnect the KB flex cable
- There are a screw secured the BT antenna, remove it
- Slide the board out.

 Be careful for the KB Flex Cable

Step 5



- Use tweezers or a sharp metal tool and slightly bend the contact plate outwards
- Clean the tube and the contact plate

⚠ Install back the logic board plate and be careful for the flex

To reassemble your device, follow these instructions in reverse order.