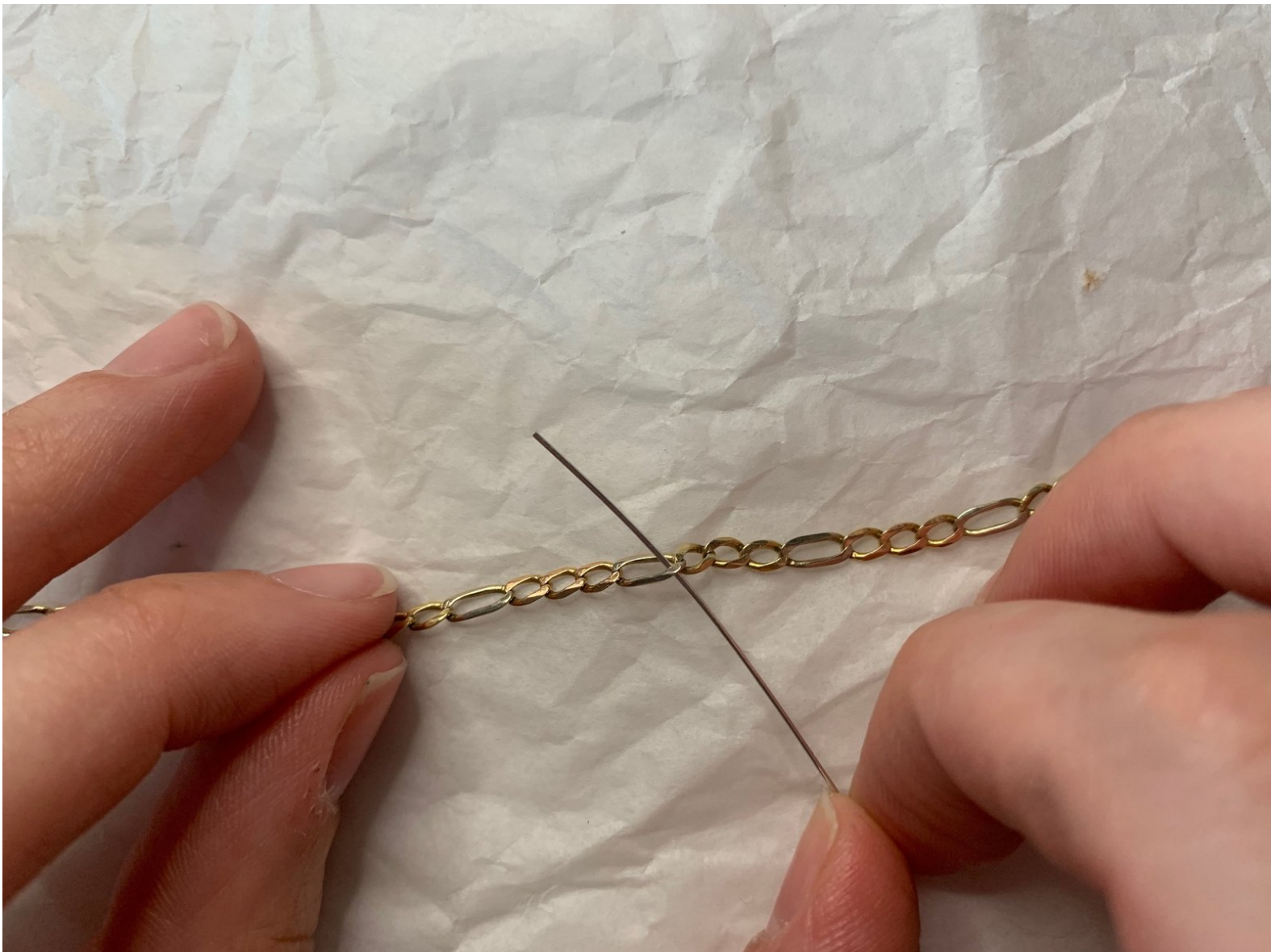




Anklet Charm Replacement

This guide will show you how to reattach a charm onto an anklet.

Written By: Helene Hartfield



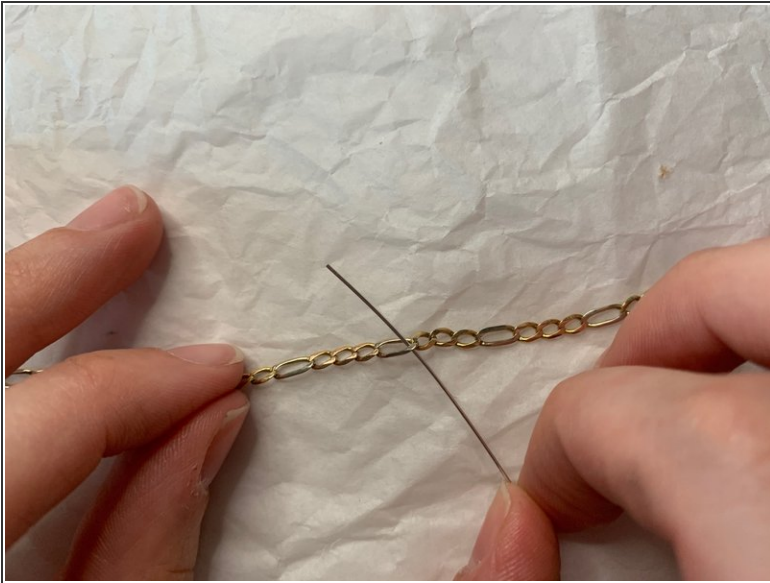
INTRODUCTION

This guide will show you how to reattach a charm onto an anklet.

TOOLS:

- [Semi-Flush Side Cutters](#) (1)
 - [2 inch headpin](#) (1)
 - [Charm](#) (1)
 - [Anklet Chain](#) (1)
 - [Small Round Nose Pliers](#) (1)
-

Step 1 — Charm



- To start, decide where on the chain you wish to place the charm. Thread the headpin through the chain link, and then place the charm on the headpin next to the chain.

Step 2



- Bend the head pin in half, with the chain and charm at the apex of the bend.

Step 3



- Cross the head pin to create a loop. Pull as tightly as possible.

Step 4



- Use round nose pliers and your hands to twist the head pin, closing off the loop. Make the twists as tight as possible. Twist 2-4 times.

Step 5



- Use semi-flush side cutters to cut the extra length off of the head pin.

Step 6



- Use round-nose pliers to fold the twisted head pin so it is flush with itself.

Step 7



- Finished!

To reassemble your device, follow these instructions in reverse order.