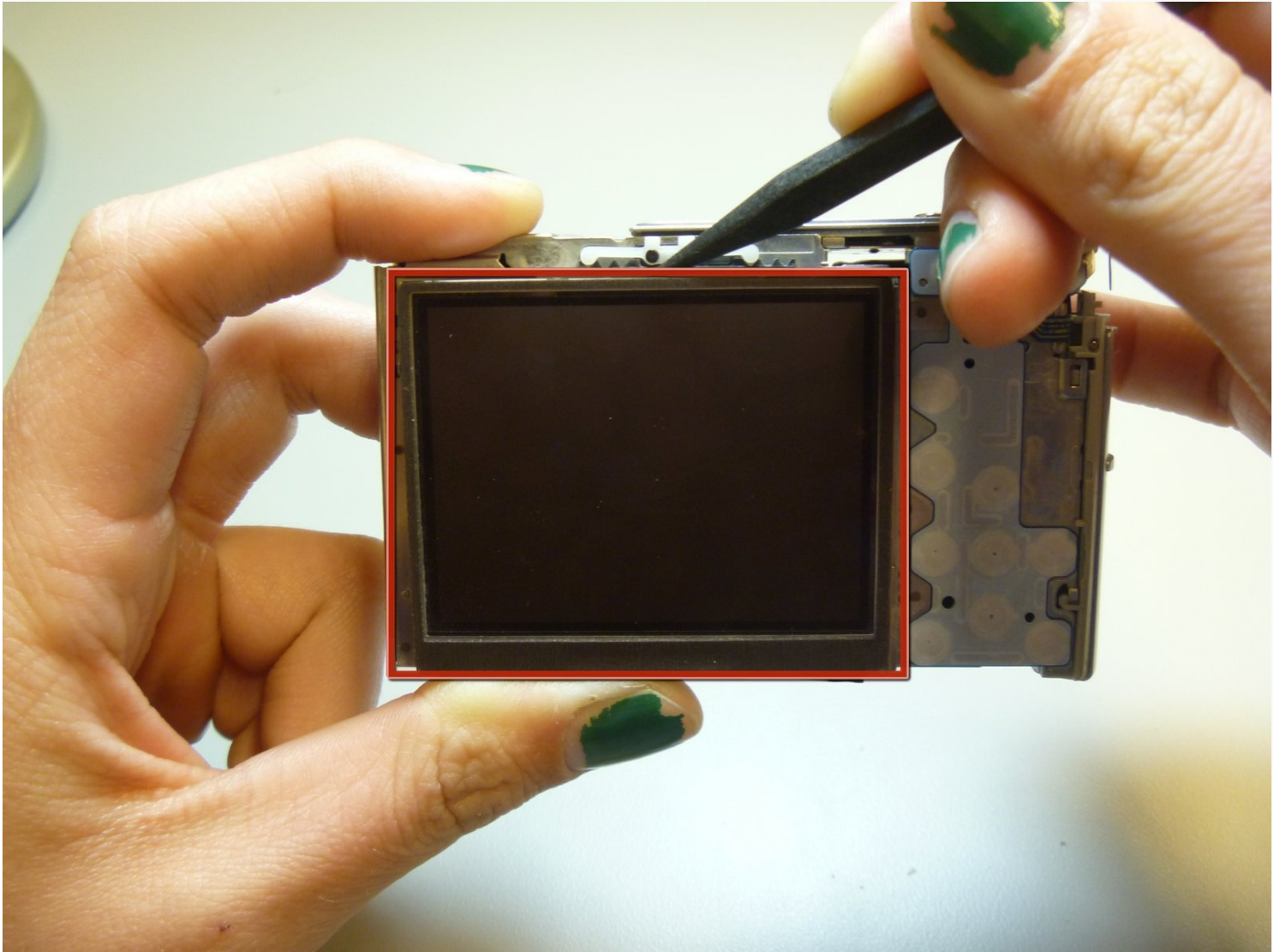




Sony Cyber-shot DSC-T9 LCD Replacement

This guide provides access to the LCD of the...

Written By: Stephannie Allen



INTRODUCTION

This guide provides access to the LCD of the camera, which is necessary to remove for many other parts. Replacing the LCD is a common procedure for this camera.

TOOLS:

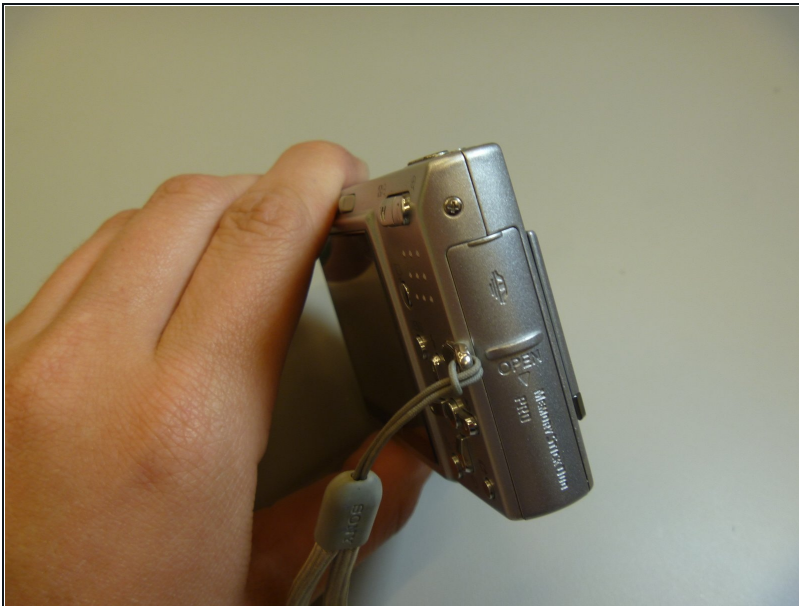
[Phillips #00 Screwdriver](#) (1)

[Spudger](#) (1)

[Tweezers](#) (1)

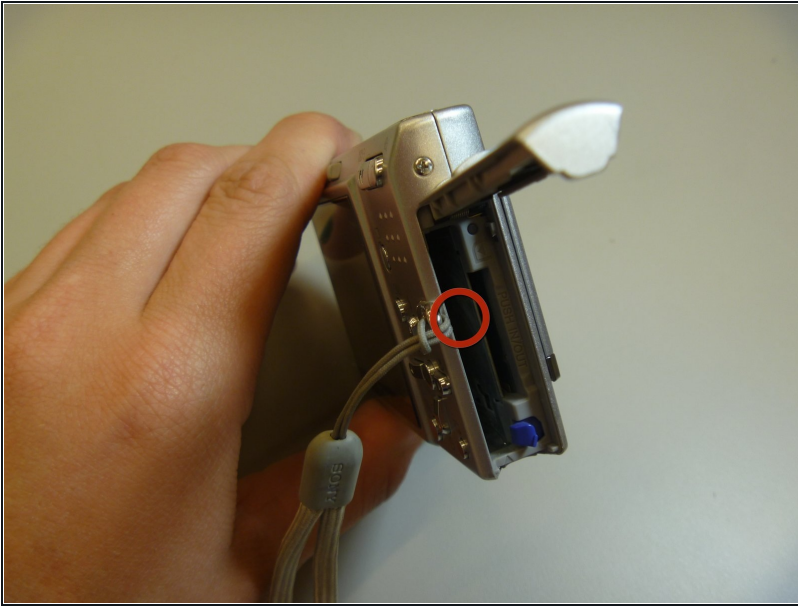
[iFixit Opening Tool](#) (1)

Step 1 — Battery



- The battery cover is located on the right side of the camera.
- Slide the cover to expose the battery.

Step 2



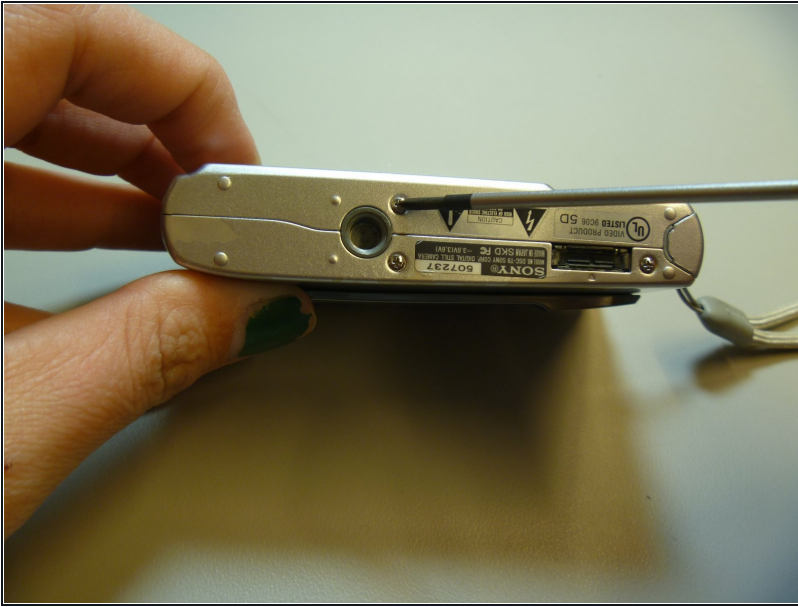
- Ensure that the battery lines up properly with the slot in the camera.
- Slide battery in.
- Slide cover closed.
- ⓘ Battery not shown

Step 3 — Front Cover



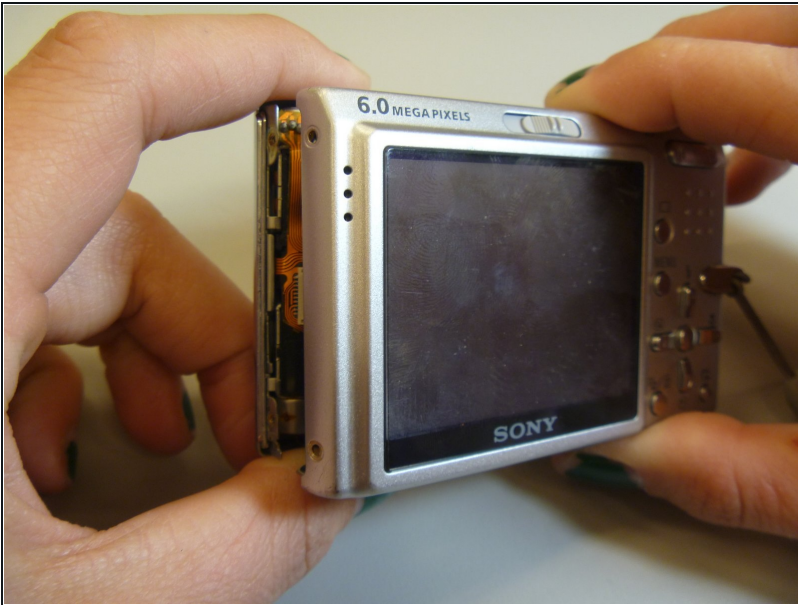
- Remove screws from outside of camera. There are 6 screws total.
- 3 screws on underside.
- 1 screw on right side, near battery cover.
- 2 screws on left side.

Step 4



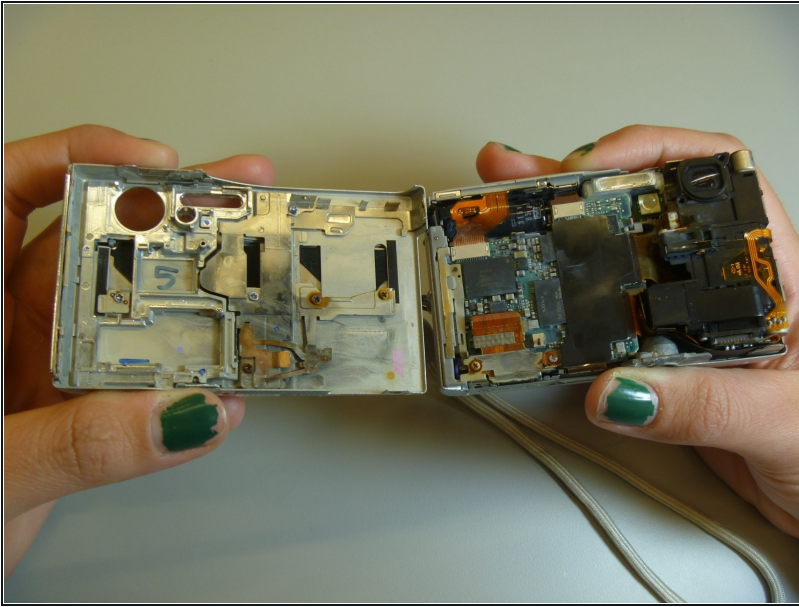
- Use screwdriver to remove screws.

Step 5



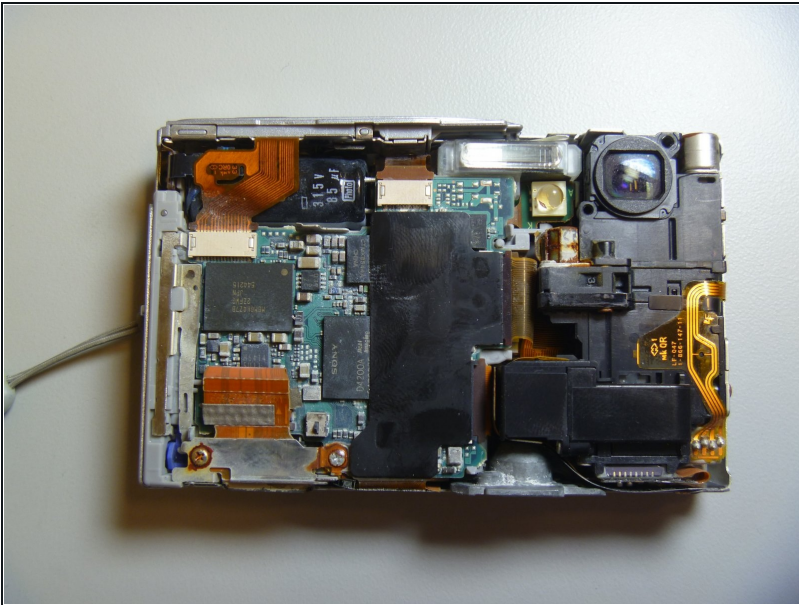
- Gently pull the front cover off of the main camera.
- All of the inner parts of the camera are attached to the back screen.

Step 6



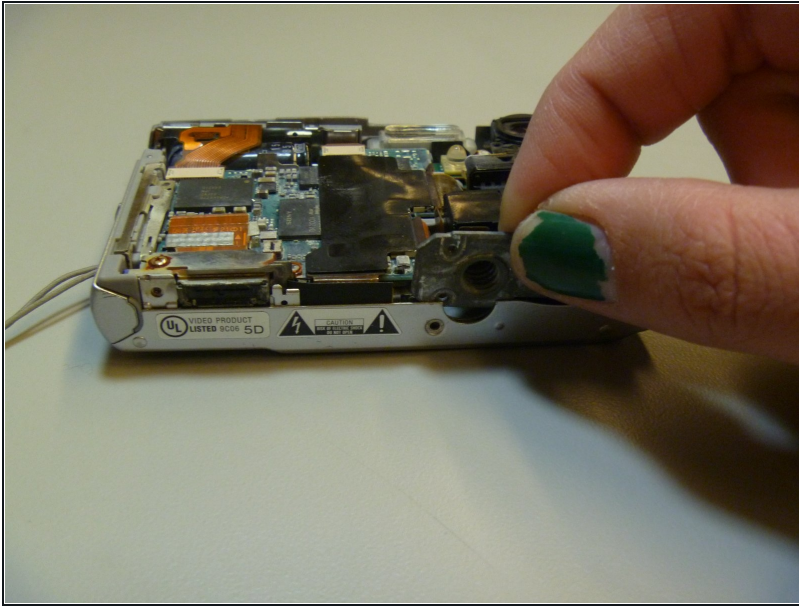
- The front cover is now removed from the camera and the internal hardware is now exposed.

Step 7 — Back Cover



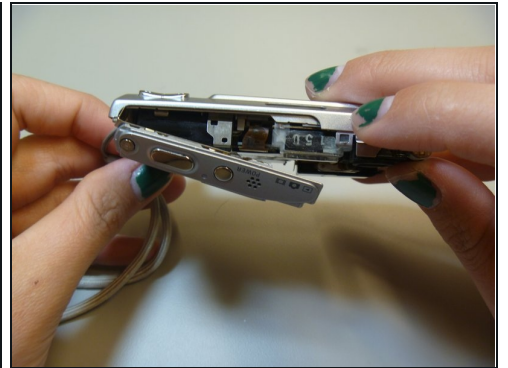
- This is the camera without the front cover.

Step 8



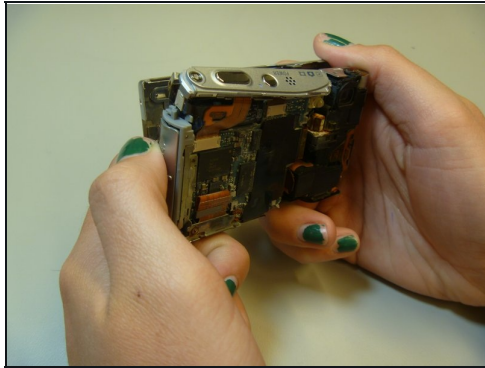
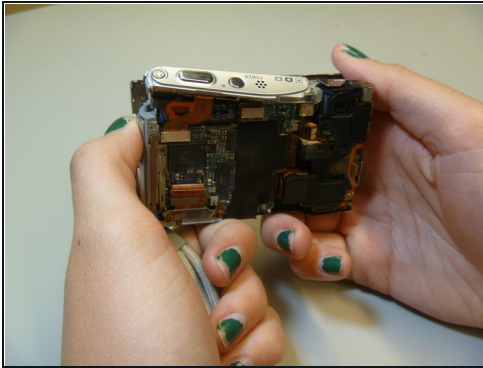
- Remove tripod piece located at the bottom of the camera. This piece should slide out with ease.

Step 9



- Slide open the top panel. This is located on the top of the camera, where the power button and shutter button are.

Step 10



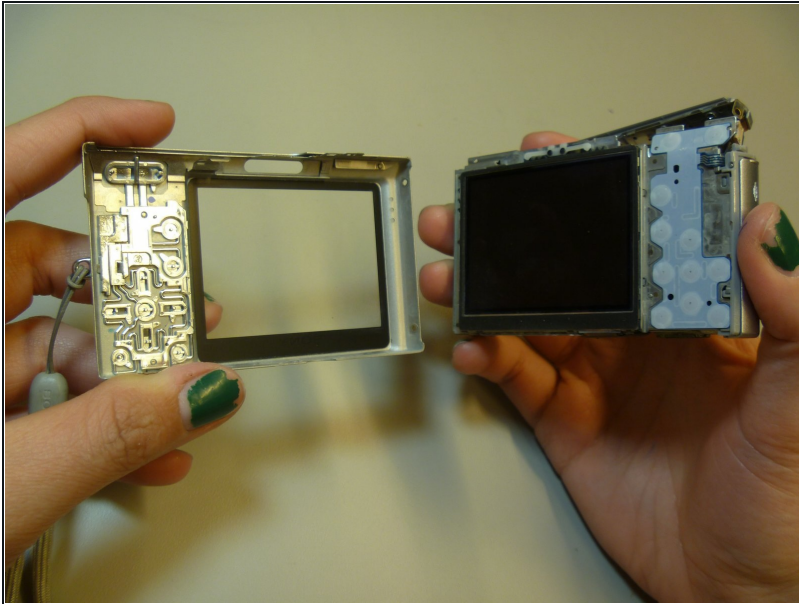
- Pull apart the inner hardware from the back case by prying on the left side.

Step 11



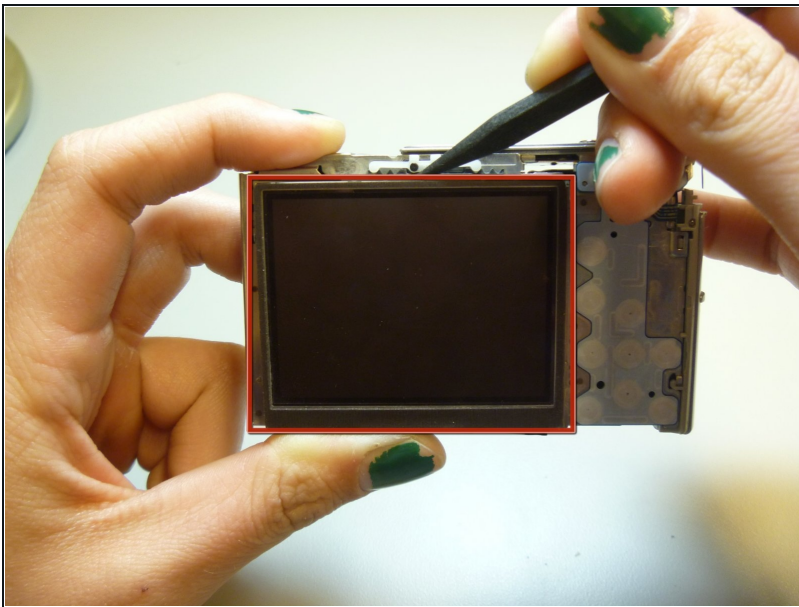
- Remove the back cover.

Step 12



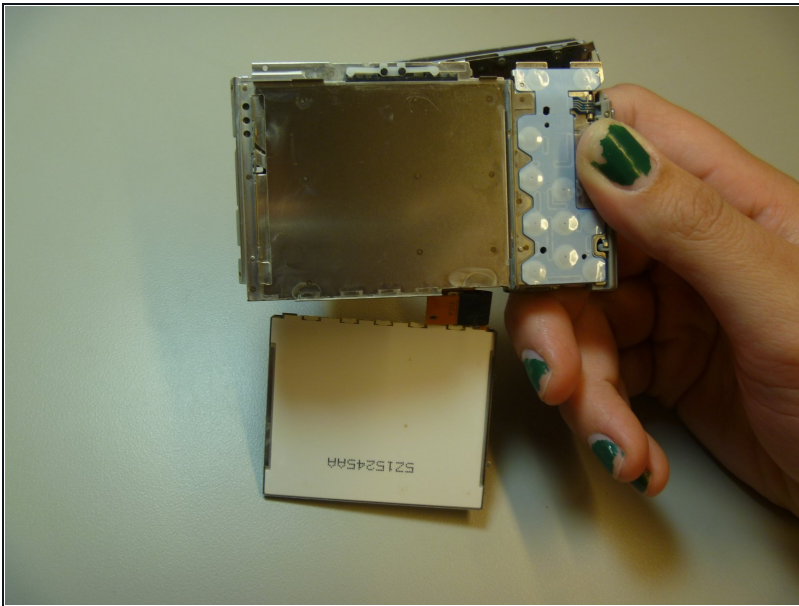
- The back cover is now removed from the internal hardware.

Step 13 — LCD



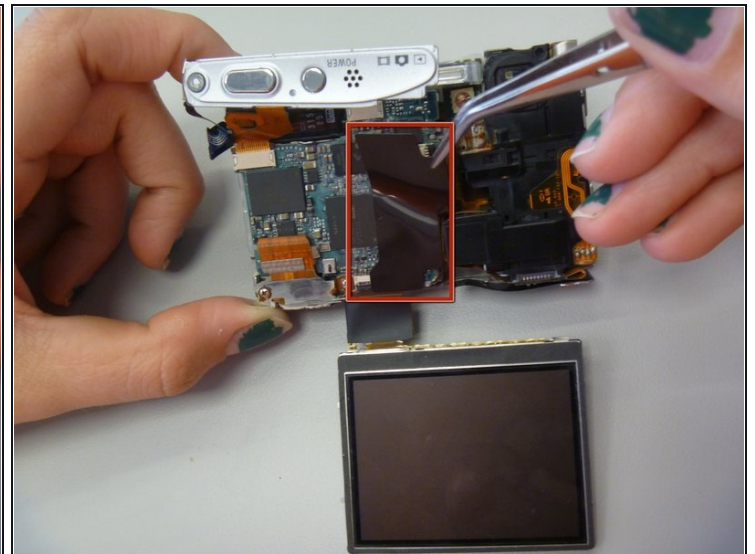
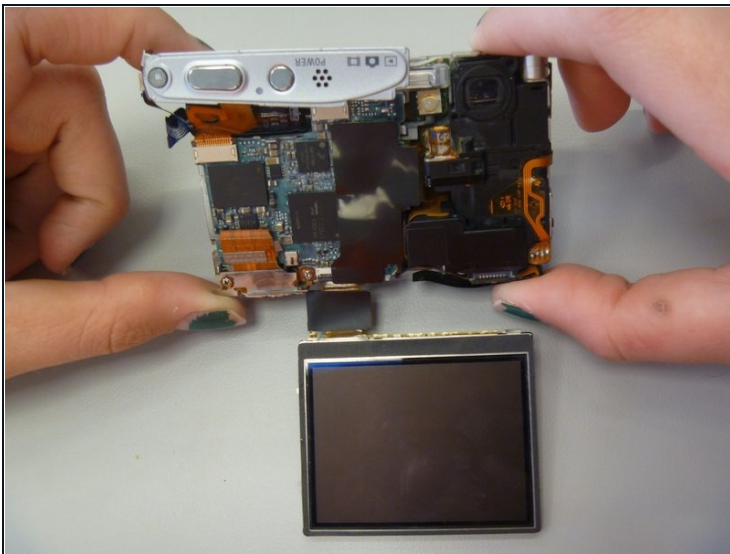
- Use the spudger to pry the LCD from the camera.

Step 14



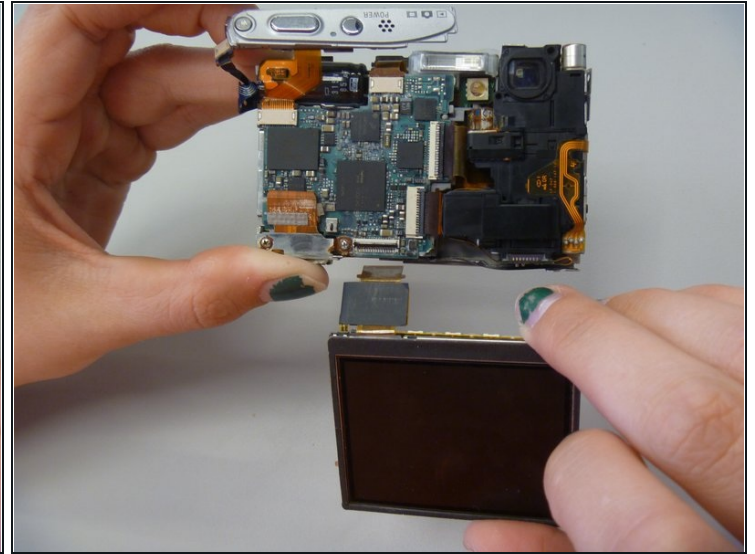
- The LCD is now removed from the camera, although attached by a ribbon at the bottom of the camera.

Step 15



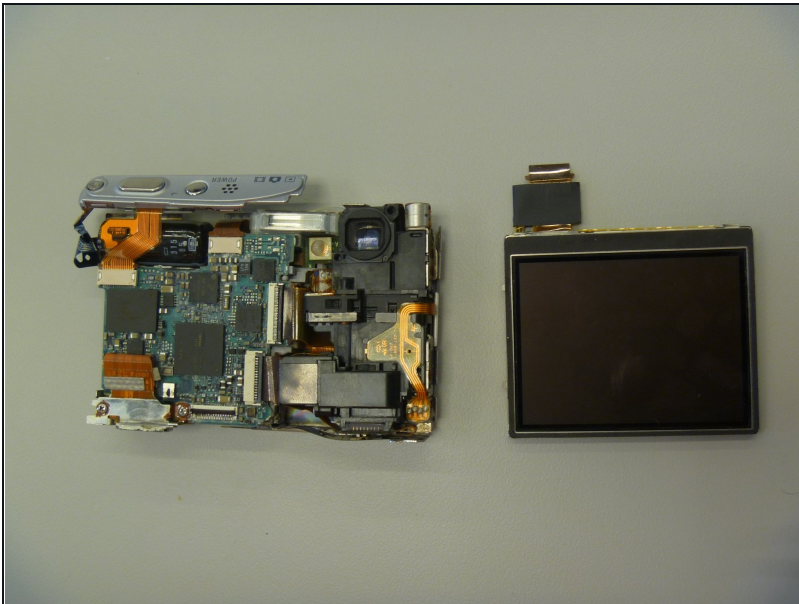
- Flip camera to other side.
- Use [tweezers](#) to peel off black sticker, located in middle of the motherboard.

Step 16



- Use pry stick to pop out LCD connector ribbon, also called the ZIF connector.

Step 17



- The LCD is now removed from the camera.

To reassemble your device, follow these instructions in reverse order.