



MacBook Air 13" Early 2017 Trackpad Replacement

Use this guide to replace your trackpad or...

Written By: Adam O'Camb



INTRODUCTION

Use this guide to replace your trackpad or remove it for adjustment.



TOOLS:

- [P5 Pentalobe Screwdriver Retina MacBook Pro and Air](#) (1)
- [T5 Torx Screwdriver](#) (1)
- [Phillips #00 Screwdriver](#) (1)
- [Spudger](#) (1)



PARTS:

- [MacBook Air 13" Mid 2013 to 2017 Trackpad](#) (1)
- [MacBook Air 13" \(Mid 2013 to 2017\) Trackpad Cable](#) (1)

Step 1 — Lower Case



- i Before proceeding, power down your MacBook. Close the display and lay it on a soft surface, top-side down.
- Use a [P5 Pentalobe](#) driver to remove ten screws securing the lower case, of the following lengths:
 - Two 9 mm screws
 - Eight 2.6 mm screws

Step 2



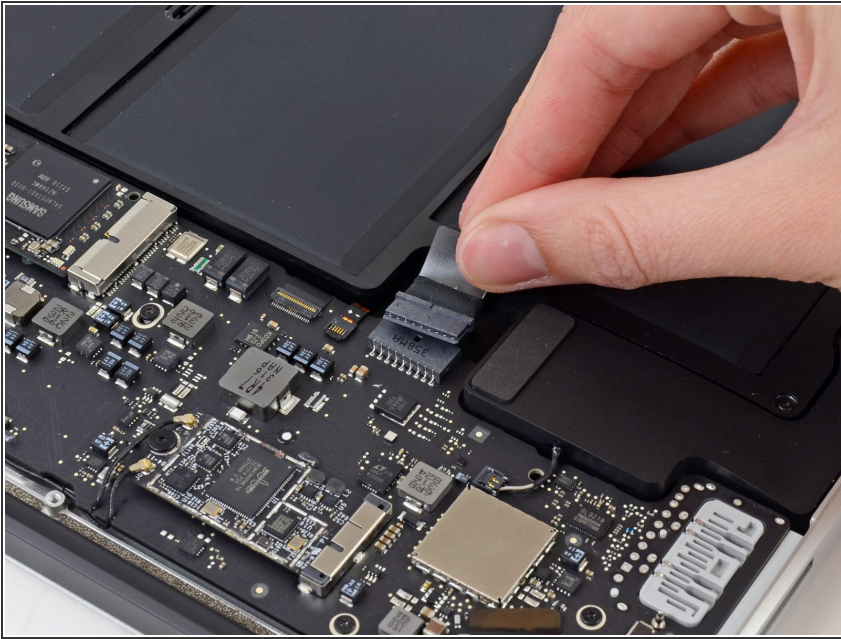
- Wedge your fingers between the display and the lower case and pull upward to pop the lower case off the Air.
- Remove the lower case and set it aside.

Step 3 — Battery Connector



-  To ensure that everything is de-energized and won't turn on while you're working, it is recommended that you disconnect the battery.
- Grab the clear plastic pull tab attached to the battery connector and pull it parallel to the board toward the front edge of the Air.
-  Do not lift upward on the connector as you disconnect it or you risk damage to the connector socket.

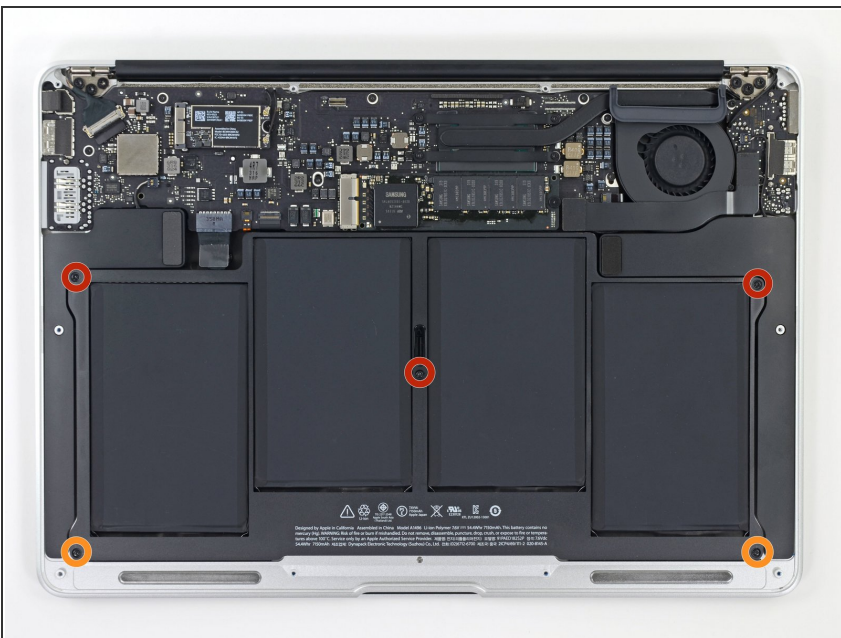
Step 4 — Battery



- Grab the clear plastic pull tab attached to the battery connector and pull it toward the front edge of the Air to disconnect the battery from the logic board.

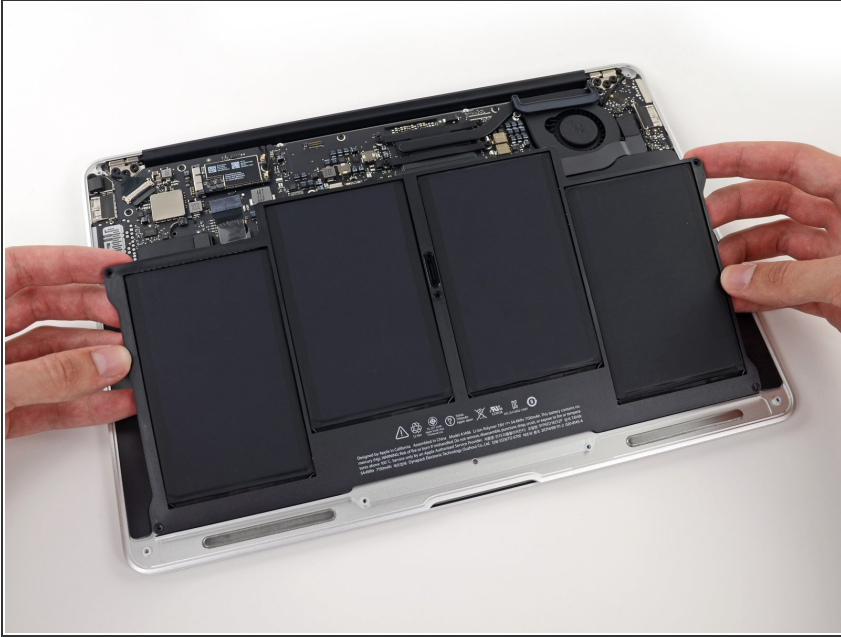
⚠ Do not lift upward on the connector as you disconnect it.

Step 5



- Remove the following five screws securing the battery to the upper case:
 - Three 6.3 mm T5 Torx screws
 - Two 2.4 mm T5 Torx screws

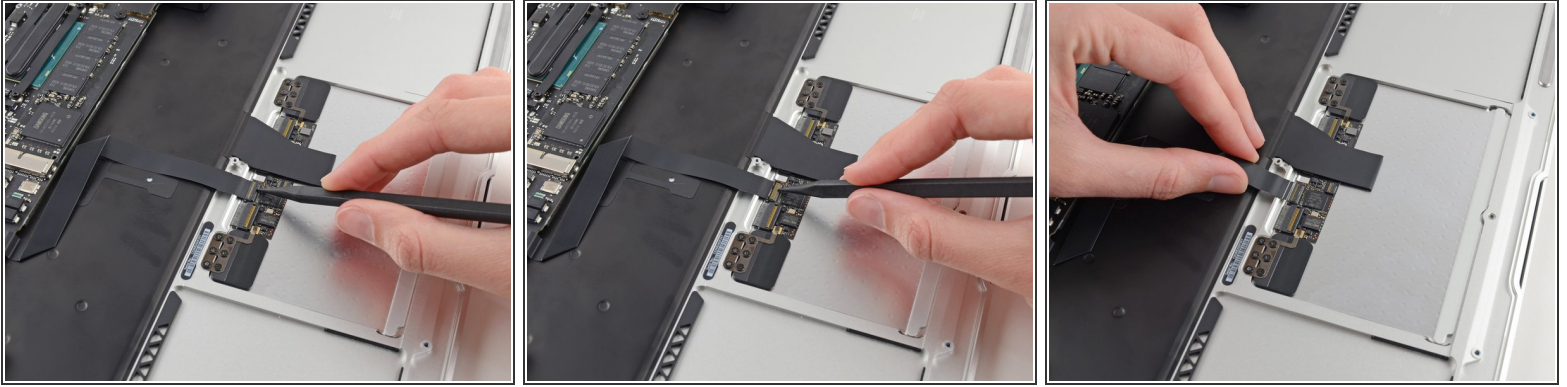
Step 6



⚠ When handling the battery, avoid squeezing or touching the four exposed lithium polymer cells.

- Lift the battery from its edge nearest the logic board and remove it from the upper case.
- ★ If you're installing a new battery, you should [calibrate](#) it after installation:
 - Charge it to 100%, and then keep charging it for at least 2 more hours. Then, unplug and use it normally to drain the battery. When you see the low battery warning, save your work, and keep your laptop on until it goes to sleep due to low battery. Wait at least 5 hours, then charge your laptop uninterrupted to 100%.
 - If you notice any unusual behavior or problems after installing your new battery, you may need to [reset your MacBook's SMC](#).

Step 7 — Trackpad



- Use the tip of a spudger or your fingernail to flip up the retaining flap on the trackpad ribbon cable ZIF socket.

⚠ Be sure you are prying up on the hinged retaining flap, **not** the socket itself.

- Pull the trackpad ribbon cable straight out of its socket toward the rear edge of the Air.

Step 8

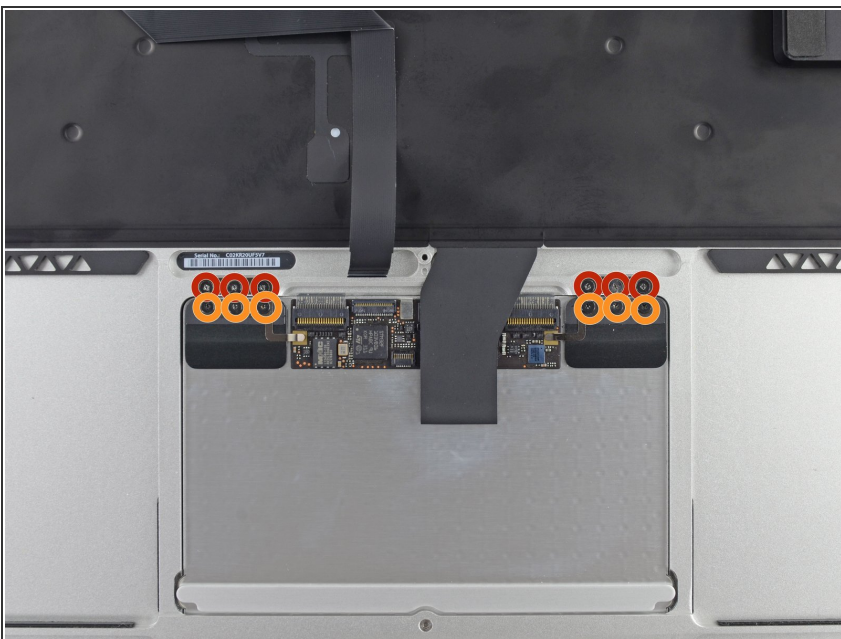


- While carefully lifting the keyboard ribbon cable with one hand, use the tip of a spudger or your fingernail to flip up the retaining flap on the keyboard ribbon cable ZIF socket.

⚠ Be sure you are prying up on the hinged retaining flap, **not** the socket itself.

- Pull the keyboard ribbon cable straight out of its socket toward the front edge of the Air.

Step 9



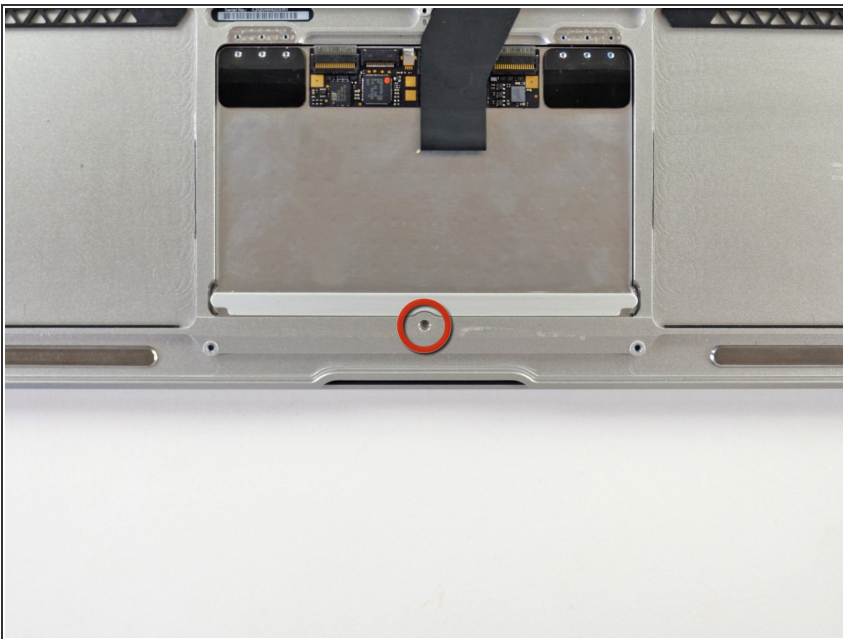
- Remove the following twelve screws:
 - Six 1.6 mm Phillips screws securing the trackpad to the upper case.
 - Six 1.6 mm Phillips screws securing the trackpad brackets to the trackpad.

Step 10



- Remove the right and left trackpad brackets from the upper case.

Step 11



- ★ During reassembly, check the clicking action on the trackpad.
 - The 1.4 mm T5 Torx screw near the front edge of the case must be adjusted correctly.
- i If overtightened, the button will cease to click at a certain point. Adjust the set screw until the clicking side of the trackpad has minimal play.
- i It's not necessary to remove this screw in order to remove the trackpad.

Step 12



- Use the flat end of a spudger to carefully lift the edge of the trackpad closest to the keyboard from its recess in the upper case by lifting it away from the brackets attached to the upper case.
- Remove the trackpad from the upper case.

To reassemble your device, follow these instructions in reverse order.

Take your e-waste to an [R2 or e-Stewards certified recycler](#).

Repair didn't go as planned? Try some [basic troubleshooting](#), or ask our [Answers community](#) for help.