



# Huawei Watch 2 Battery Assembly Replacement

How to replace a worn-out or dead battery assembly in your Huawei Watch 2.

Written By: Dominik Schnabelrauch



## INTRODUCTION

Use this guide to replace a worn-out or dead battery assembly in your Huawei Watch 2.

For your safety, discharge your battery below 25% before disassembling your Huawei Watch 2. This reduces the risk of a dangerous thermal event if the battery is accidentally damaged during the repair.

Note: If your battery is swollen, [take appropriate precautions](#).

Note: This guide instructs you to replace the battery assembly. However, if you only want to replace the battery itself, it's a different procedure and you can [find the appropriate battery guide here](#). Make sure you have the correct part before starting this guide.

You'll need replacement adhesive to reattach components when reassembling the device.

If the frame is deformed, it's important to replace it to make sure the new screen will mount correctly and won't suffer damage from uneven pressure.



### TOOLS:

- [Tweezers](#) (1)
  - [iFixit Opening Tool](#) (1)
  - [T2 Torx Screwdriver](#) (1)
  - [Spudger](#) (1)
  - [iOpener](#) (1)
  - [Phillips #00 Screwdriver](#) (1)
-

## Step 1 — Huawei Watch 2 Opening Procedure



- Before starting repairs, take your watch off the charger and power it down.
- ⓘ Feel free to attach or remove the watch band as needed to provide more control as you make repairs.

## Step 2



- Remove the four Torx T2 screws (4.5 mm length).

### Step 3



- Use a pair of tweezers to remove the four plastic covers sitting next to the watch band holders.

### Step 4



- Insert an opening tool into the gap between the back cover and the watch case at the bottom edge of the back cover.
- Use the opening tool to pry up the back cover of the Huawei Watch 2.

**⚠ Do not remove the back cover assembly all the way yet—it's still connected to the mainboard.**

## Step 5



- Carefully fold the back cover assembly to the opposite side of the two watch crowns.

## Step 6 — Huawei Watch 2 Battery Disconnect



- Remove the Phillips #00 screw (1.8 mm length).

## Step 7



**i** The heart rate sensor flex cable is attached to the metal shield which covers the battery connector. In order to avoid damage to the flex cable, only grab the metal shield on the bottom end where the Phillips screw was located.

- Use a pair of tweezers to carefully remove the metal shield.
- Remove the back cover assembly.

## Step 8



- Use the flat end of a spudger to pry up and disconnect the battery flex cable.

## Step 9 — Battery Assembly



- Remove the two Phillips #00 screws (1.8 mm length).

## Step 10



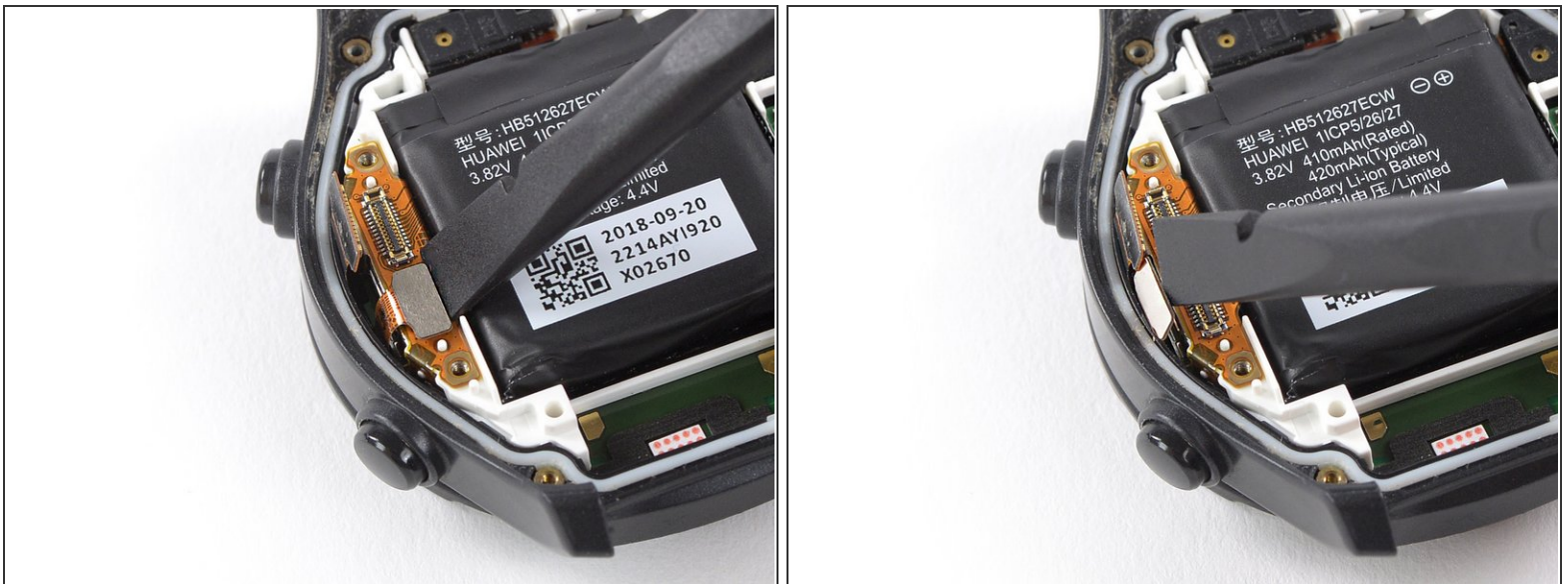
- Use a pair of tweezers to remove the metal shield covering the display and the digitizer flex cables.

## Step 11



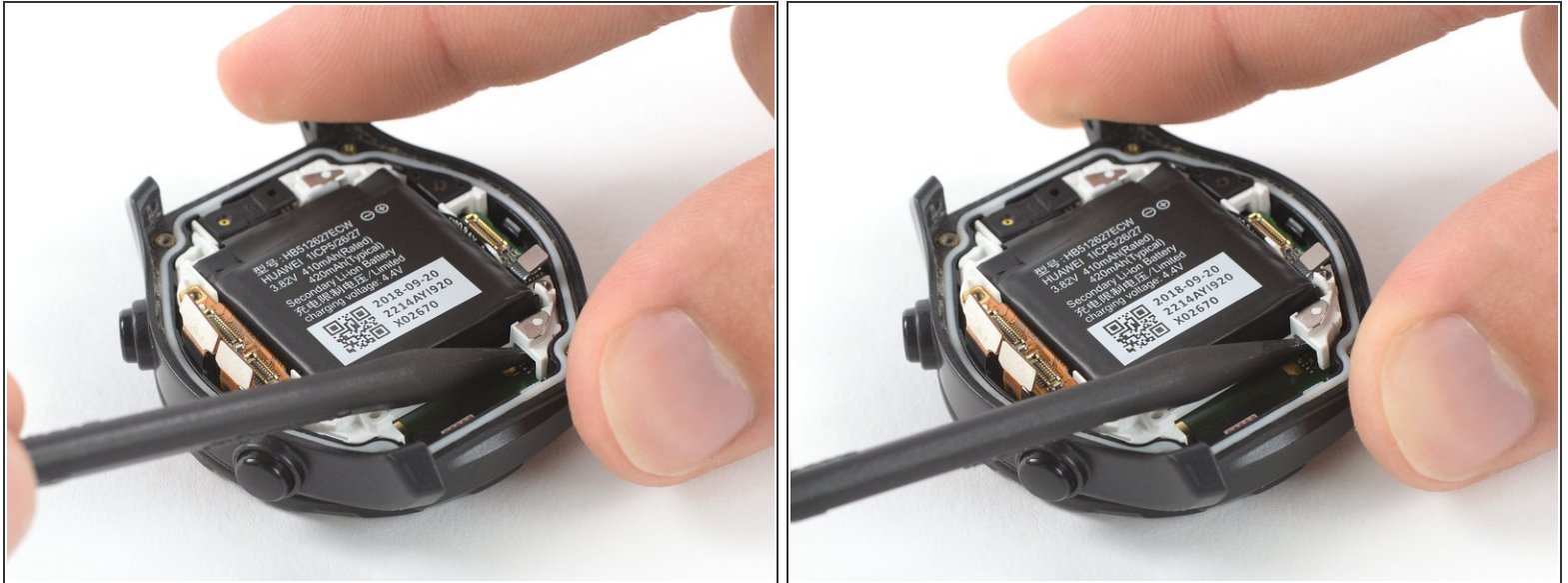
- Use the flat end of a spudger to pry up and disconnect the digitizer flex cable.

## Step 12



- Use the flat end of a spudger to pry up and disconnect the display flex cable.

## Step 13



**⚠ Avoid damaging the resistors on top of the motherboard during the following removal procedure.**

- i** The motherboard and the battery assembly are held together by two screws on the bottom of the motherboard. In order to replace the battery assembly, you need to pry the full assembly out of the watch frame.
- Insert the pointed end of a spudger into the recess at the bottom right corner of the white battery frame.
- Use the spudger to pry up the right corner of the assembly consisting of the battery and the motherboard.

## Step 14



- Insert the pointed end of a spudger into the recess at the bottom left corner of the white battery frame.
- Use the spudger to pry up the left corner of the assembly consisting of the battery and the motherboard.

## Step 15



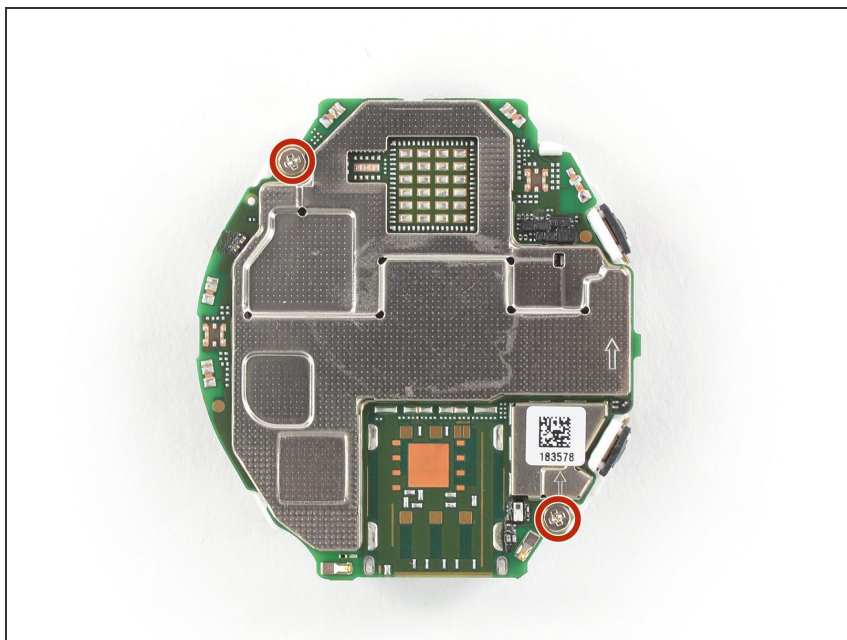
- Use a pair of tweezers to remove the battery and motherboard assembly.

## Step 16



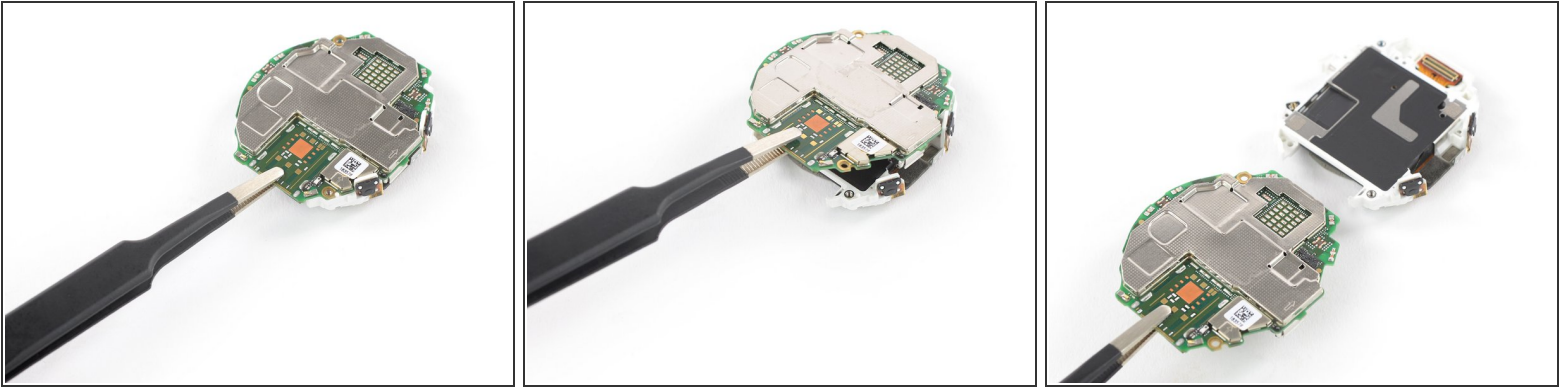
- Use a pair of tweezers to remove the black rubber gasket from the microphone next to the top right corner of the battery.

## Step 17



- Remove the two Phillips screws (1.8 mm length) from the bottom of the motherboard.

## Step 18



- Use a pair of tweezers to remove the motherboard from the battery assembly.
- ☑ At this point during reassembly make sure that the flex cable on the bottom side of the battery assembly is connected to the motherboard.

## Step 19



- ☑ Before reassembly check your new part for any components that might need to be transferred from the old one.

To reassemble your Huawei Watch 2 follow these instructions in reverse.

If possible, turn on your Huawei Watch 2 and test your repair before resealing.

For optimal performance, calibrate your newly installed battery: Charge it to 100% and keep charging it for at least 2 more hours. Then use your device until it shuts off due to low battery. Finally, charge it uninterrupted to 100%.

Take your e-waste to an [R2 or e-Stewards certified recycler](#).

Repair didn't go as planned? Check out our [Answers community](#) for troubleshooting help.