



Fitbit Ionic Display Assembly Replacement

Use this guide to replace a cracked or broken...

Written By: Adriana Zwink



INTRODUCTION

Use this guide to replace a cracked or broken display on your Fitbit Ionic.

If the frame is deformed, we strongly suggest replacing it to make sure the new display will mount correctly and won't suffer damage from uneven pressure.

You'll need replacement adhesive to reattach components when reassembling the device.

TOOLS:

[iOpener](#) (1)
[Technician's Razor Set](#) (1)
[iFixit Opening Picks \(Set of 6\)](#) (1)
[Spudger](#) (1)
[ESD Safe Blunt Nose Tweezers](#) (1)
[T2 Torx Screwdriver](#) (1)

PARTS:

[Fitbit Ionic Touch Screen Assembly](#) (1)

Step 1 — How to open the Fitbit Ionic



- Before starting, take your Fitbit Ionic off the charger and power it down.
- ① Feel free to attach or remove the watch band as needed to provide more control as you make repairs.

Step 2



- [Heat an iOpener](#) and apply it on the display for at least two minutes to soften the adhesive underneath.

i The adhesive of the Fitbit Ionic is very strong. You may need to reheat the iOpener and repeat this procedure several times until the display adhesive gets loose enough.

Step 3



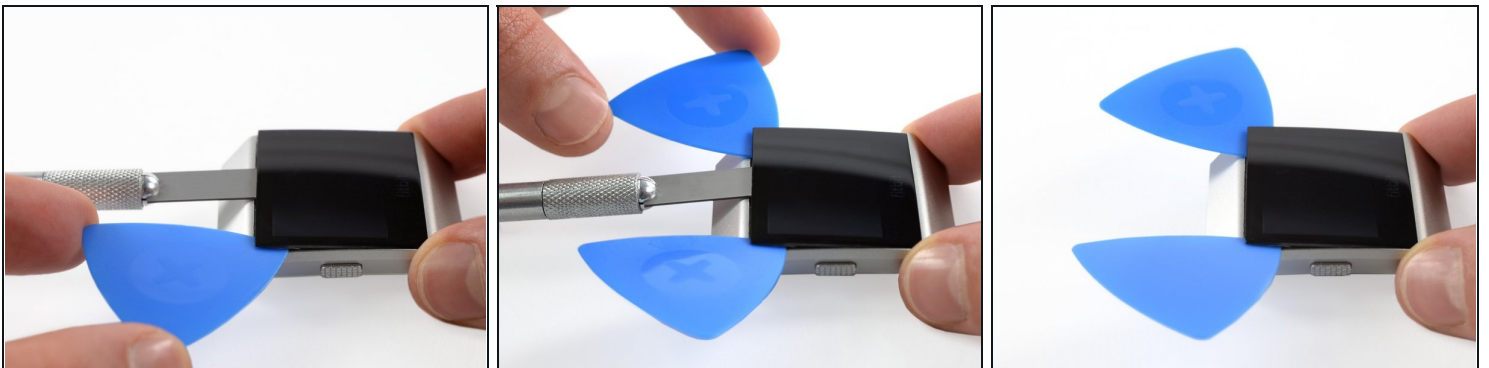
- Insert a technician's razor with a flat blade into the small gap between the watch case and the display.
- Cut through the adhesive on the upper side of the Fitbit Ionic.

Step 4



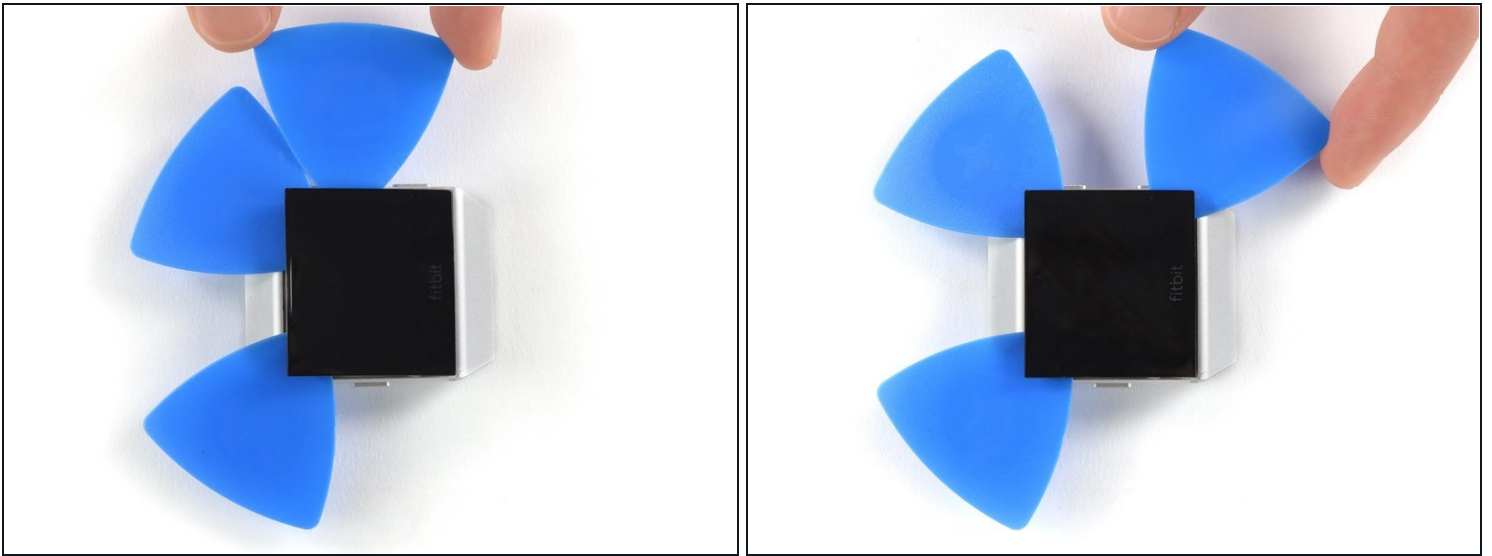
- Use a technician's razor with a flat blade to pry up the top edge of the display and create a small gap.

Step 5



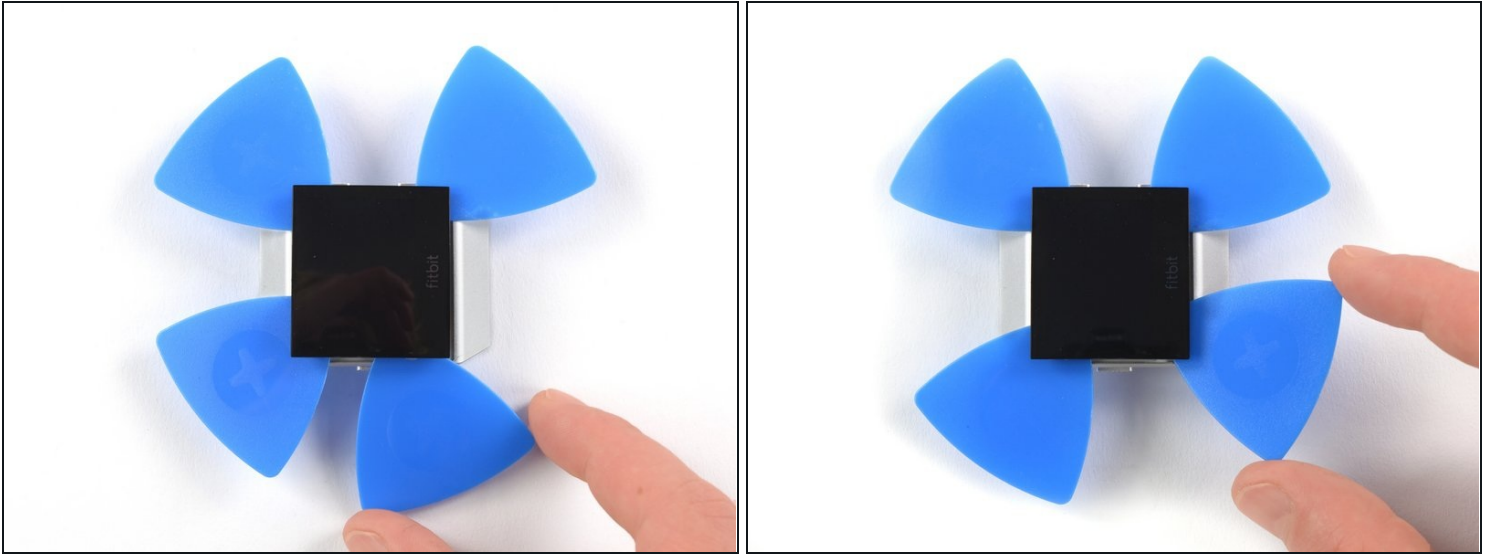
- Insert two opening picks underneath the top left and the top right corner.
- Leave the opening picks in place to prevent the adhesive from resealing.
- Remove the razor blade.

Step 6



- Insert a third opening pick underneath the top right corner and slide it along the right edge of the display.
 - Leave the opening pick in the bottom right corner to prevent the adhesive from resealing.
- ① If cutting becomes too difficult, [reheat](#) and reapply the iOpener.

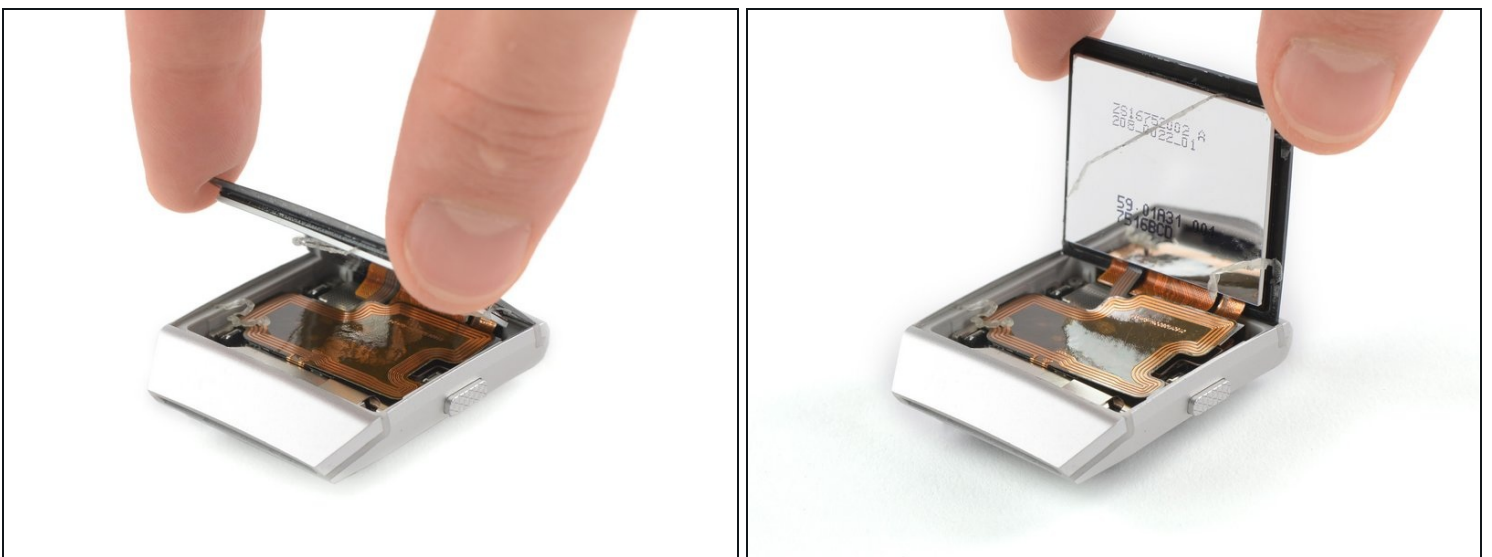
Step 7



- Insert a fourth opening pick underneath the top left corner and slide it along the left edge of the display.
- Leave the opening pick in bottom left corner to prevent the adhesive from resealing.

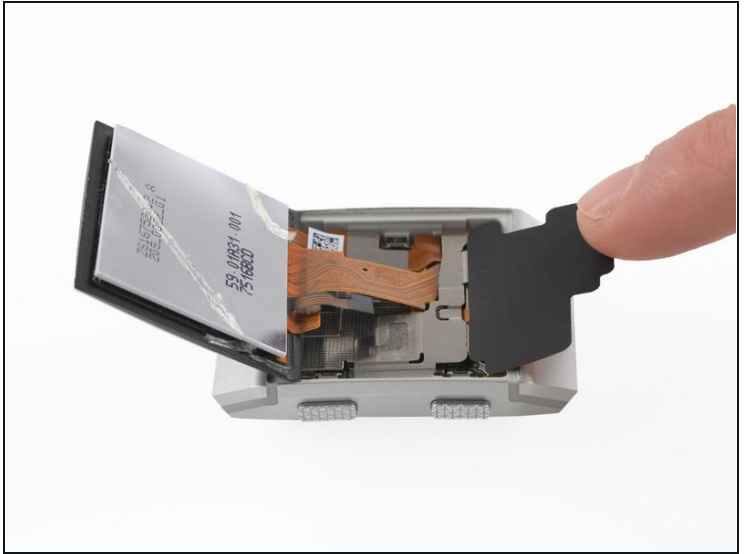
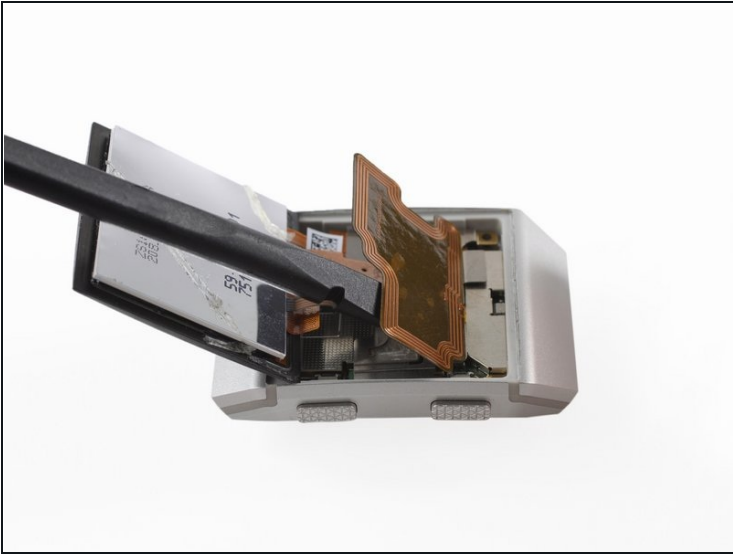
⚠ Do not remove the display assembly all the way yet—it's still connected to the mainboard.

Step 8



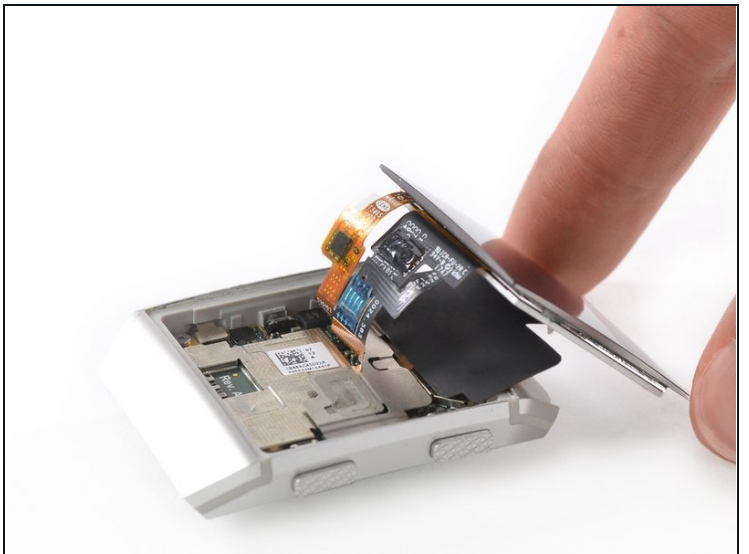
- Carefully fold the display assembly in the direction of the bottom edge.

Step 9 — Display Assembly



- Use the flat end of a spudger to loosen and pry up the mildly glued NFC antenna.
- Carefully fold the NFC antenna in the direction of the upper edge of the watch.

Step 10



- Carefully fold the display assembly onto the upper side of the watch.
⚠ Take care not to pull or bend the cables too much—they are still connected to the mainboard.

Step 11



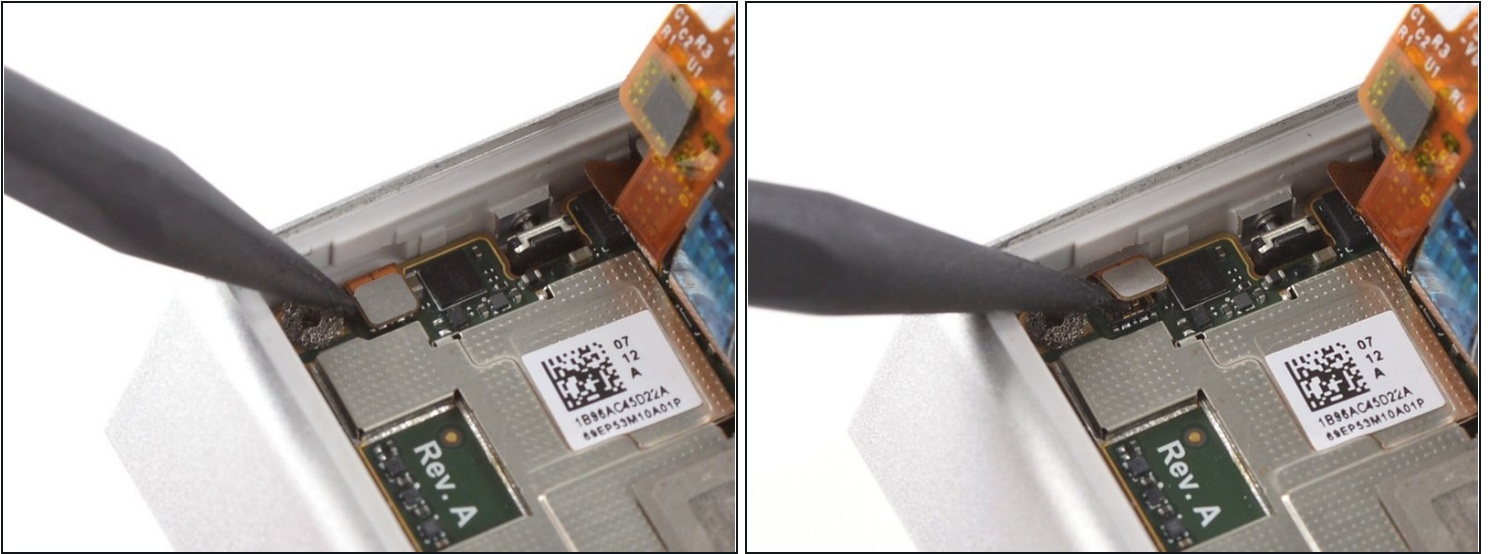
- Remove the Torx T2 screw (3.65 mm length) on the bottom left corner.

Step 12



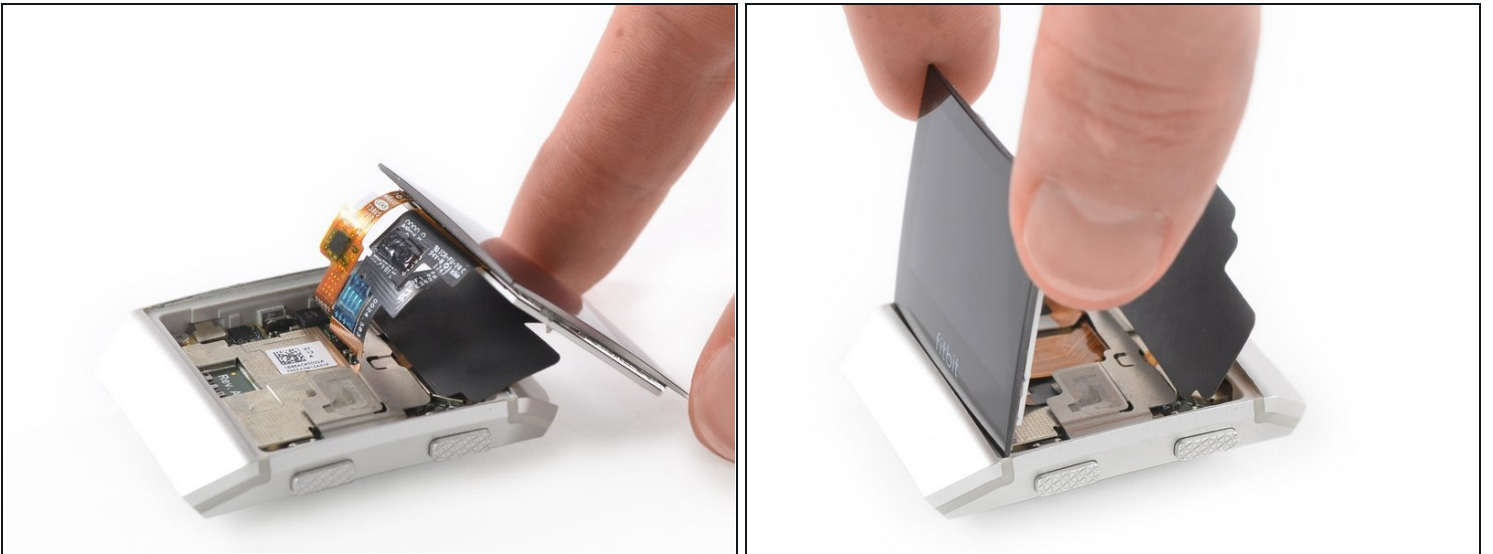
- Use a pair of [tweezers](#) to remove the metal shield covering the battery flex cable.

Step 13



- Use a spudger to pry up and disconnect the battery flex cable.

Step 14



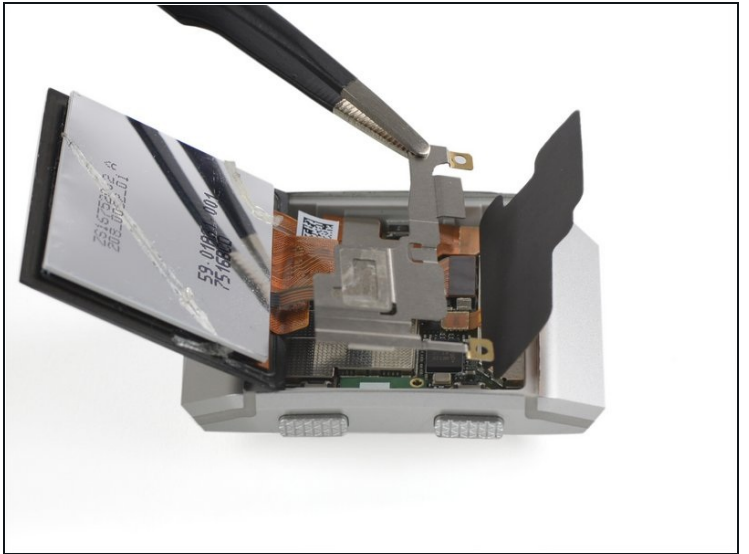
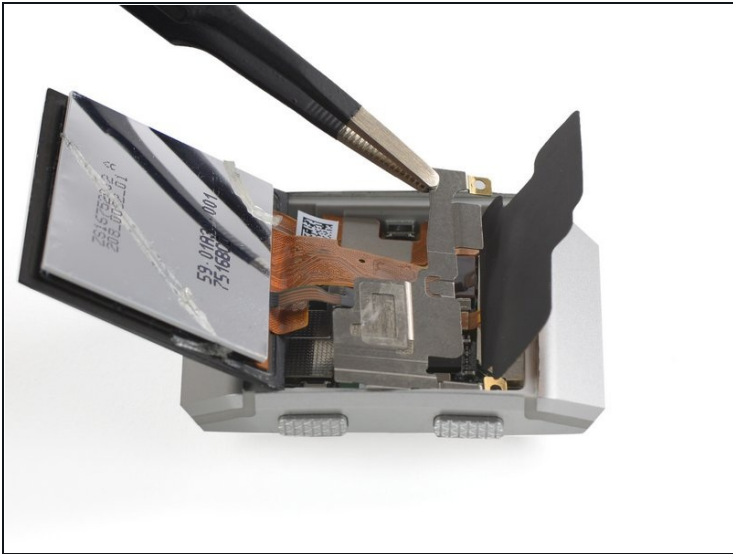
- Fold the display assembly back to its original position.

Step 15



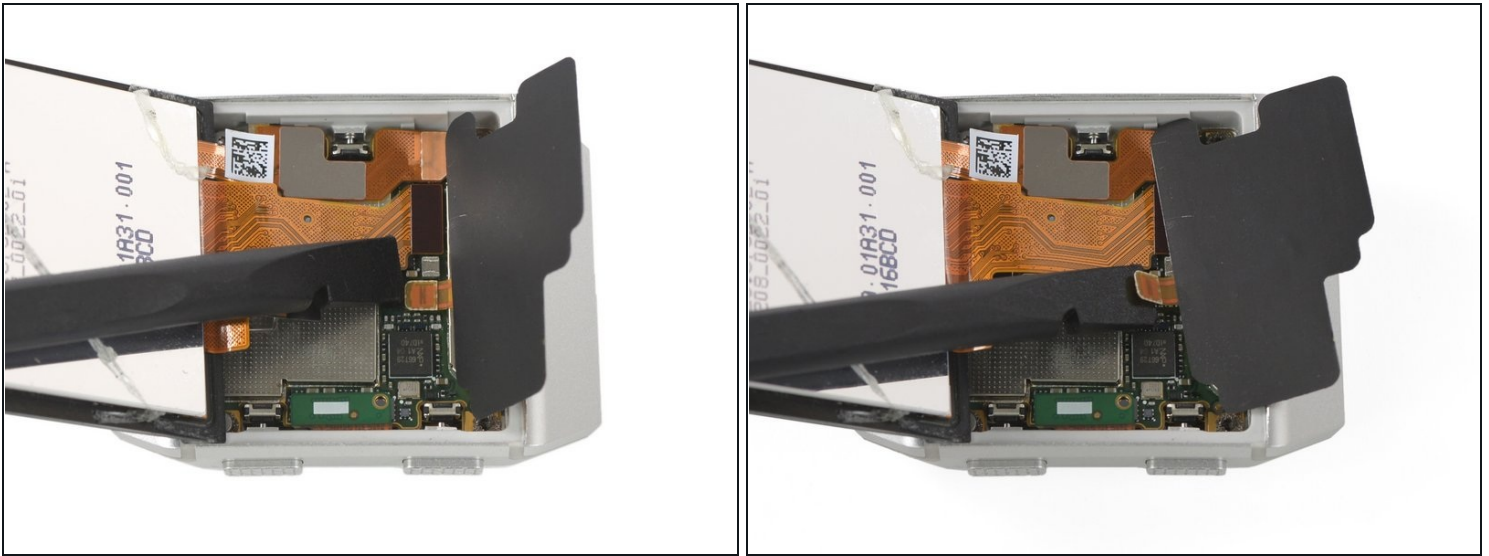
- Remove the two Torx T2 screws (3.65 mm length) from the top edge of the watch.

Step 16



- Use a pair of tweezers to remove the metal cover.

Step 17



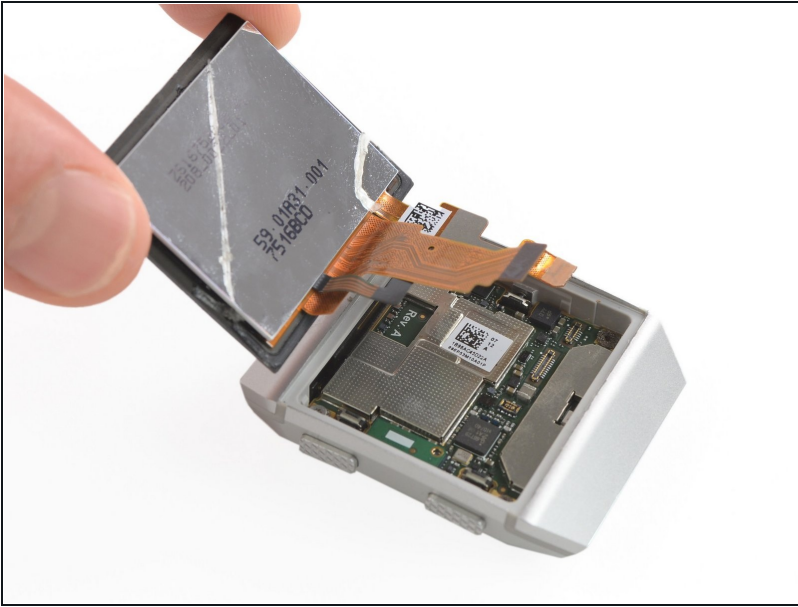
- Use a spudger to pry up and disconnect the NFC antenna.
- Remove the NFC antenna.

Step 18



- Use a spudger to pry up and disconnect the two display cables from the motherboard.

Step 19



- Remove the display assembly.
- ⓘ If possible, turn on your Fitbit Ionic and test your repair before installing new adhesive and resealing.

To reassemble your device, follow these instructions in reverse order. Apply new adhesive where necessary after cleaning the relevant areas with isopropyl alcohol (>90%).

Compare your new replacement part to the original part—you may need to transfer remaining components or remove adhesive backings from the new part before installing.

Take your e-waste to an [R2 or e-Stewards certified recycler](#).

Repair didn't go as planned? Check out our [Answers community](#) for troubleshooting help.