



How to open the Fitbit Ionic

How to open your Fitbit Ionic for repairs.

Written By: Adriana Zwick



INTRODUCTION

Use this guide to open your Fitbit Ionic for repairs.



TOOLS:

- [iOpener](#) (1)
 - [Technician's Razor Set](#) (1)
 - [iFixit Opening Picks set of 6](#) (1)
-

Step 1 — How to open the Fitbit Ionic



- Before starting, take your Fitbit Ionic off the charger and power it down.
- ⓘ Feel free to attach or remove the watch band as needed to provide more control as you make repairs.

Step 2



- [Heat an iOpener](#) and apply it on the display for at least two minutes to soften the adhesive underneath.
- ⓘ The adhesive of the Fitbit Ionic is very strong. You may need to reheat the iOpener and repeat this procedure several times until the display adhesive gets loose enough.

Step 3



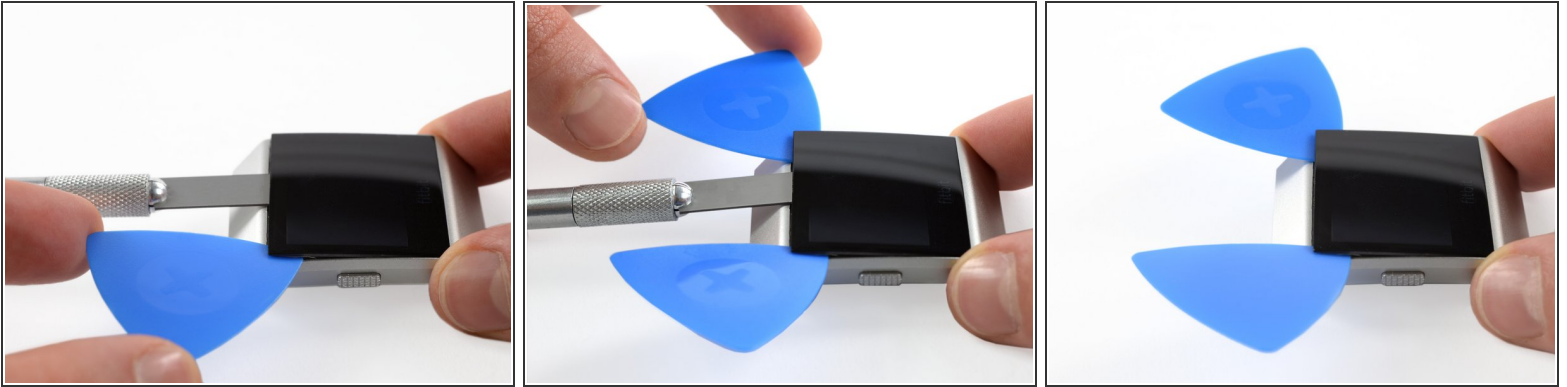
- Insert a technician's razor with a flat blade into the small gap between the watch case and the display.
- Cut through the adhesive on the upper side of the Fitbit Ionic.

Step 4



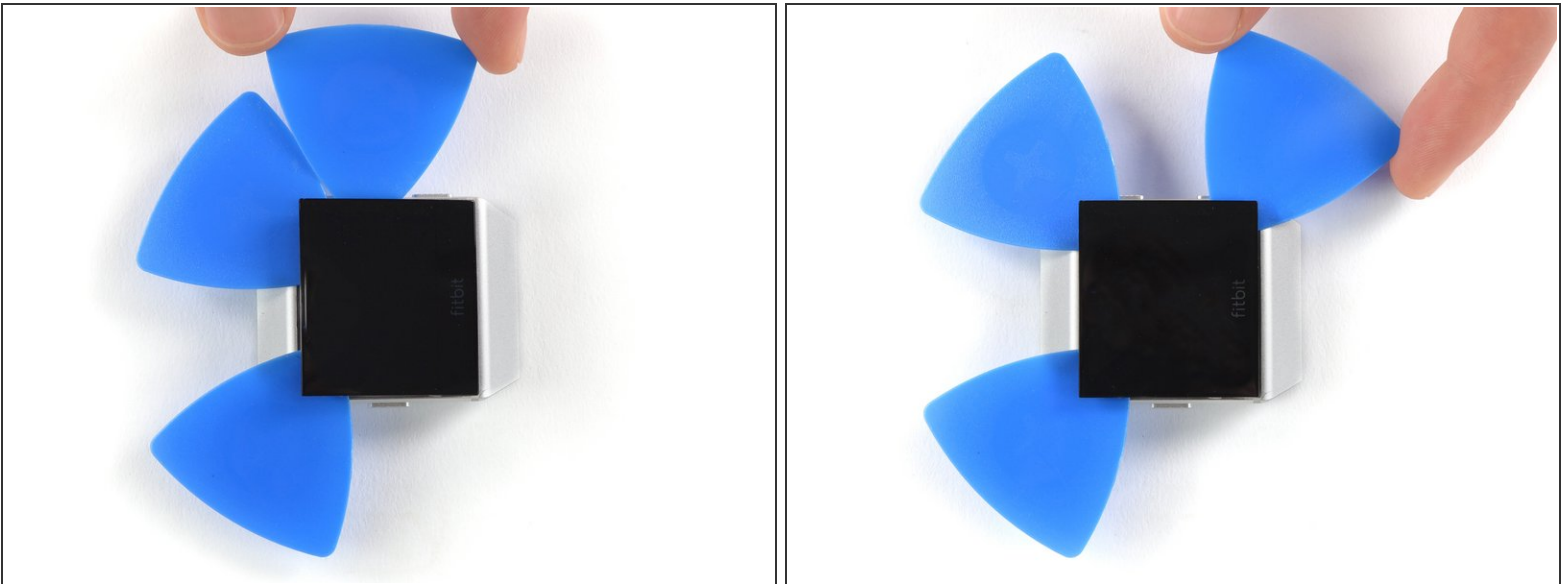
- Use a technician's razor with a flat blade to pry up the top edge of the display and create a small gap.


Step 5



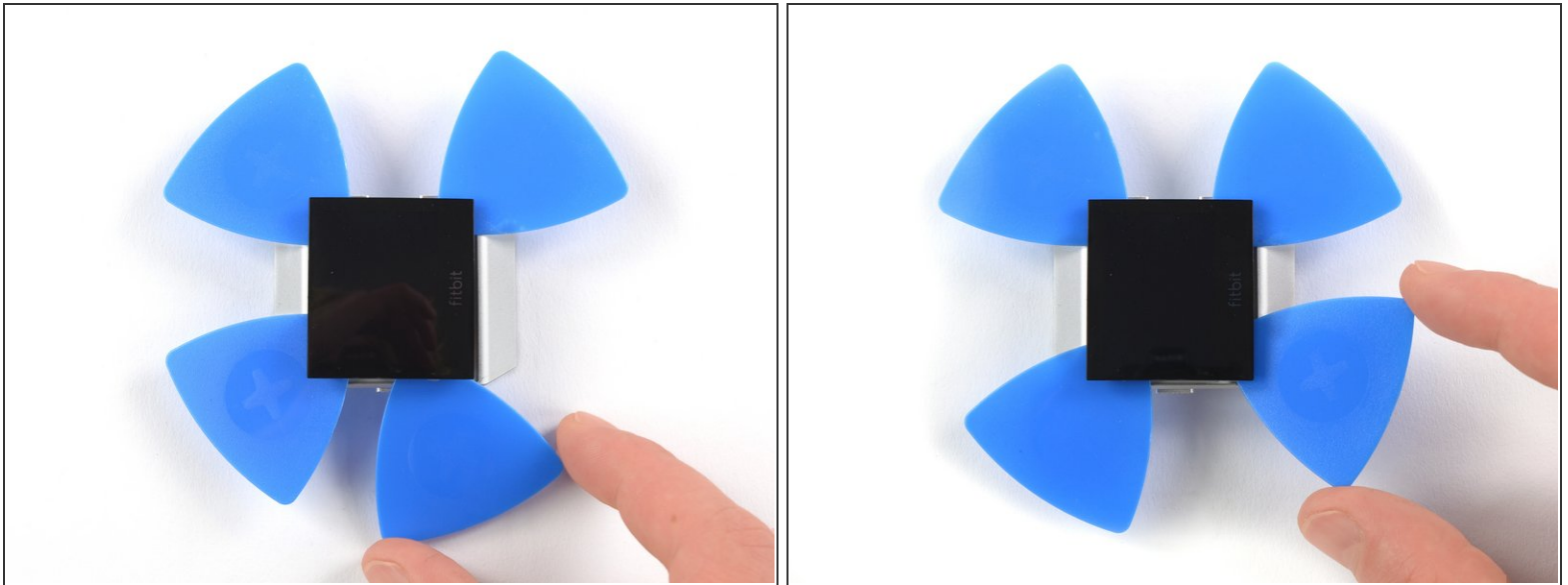
- Insert two opening picks underneath the top left and the top right corner.
- Leave the opening picks in place to prevent the adhesive from resealing.
- Remove the razor blade.

Step 6




- Insert a third opening pick underneath the top right corner and slide it along the right edge of the display.
 - Leave the opening pick in the bottom right corner to prevent the adhesive from resealing.
-  If cutting becomes too difficult, [reheat](#) and reapply the iOpener.

Step 7



- Insert a fourth opening pick underneath the top left corner and slide it along the left edge of the display.
- Leave the opening pick in bottom left corner to prevent the adhesive from resealing.

 Do not remove the display assembly all the way yet—it's still connected to the mainboard.

Step 8



- Carefully fold the display assembly in the direction of the bottom edge.

To reassemble your device, follow these instructions in reverse order.

You'll need replacement adhesive to reattach components when reassembling the device.

Opening didn't go as planned? Check out our [Answers community](#) for troubleshooting help.