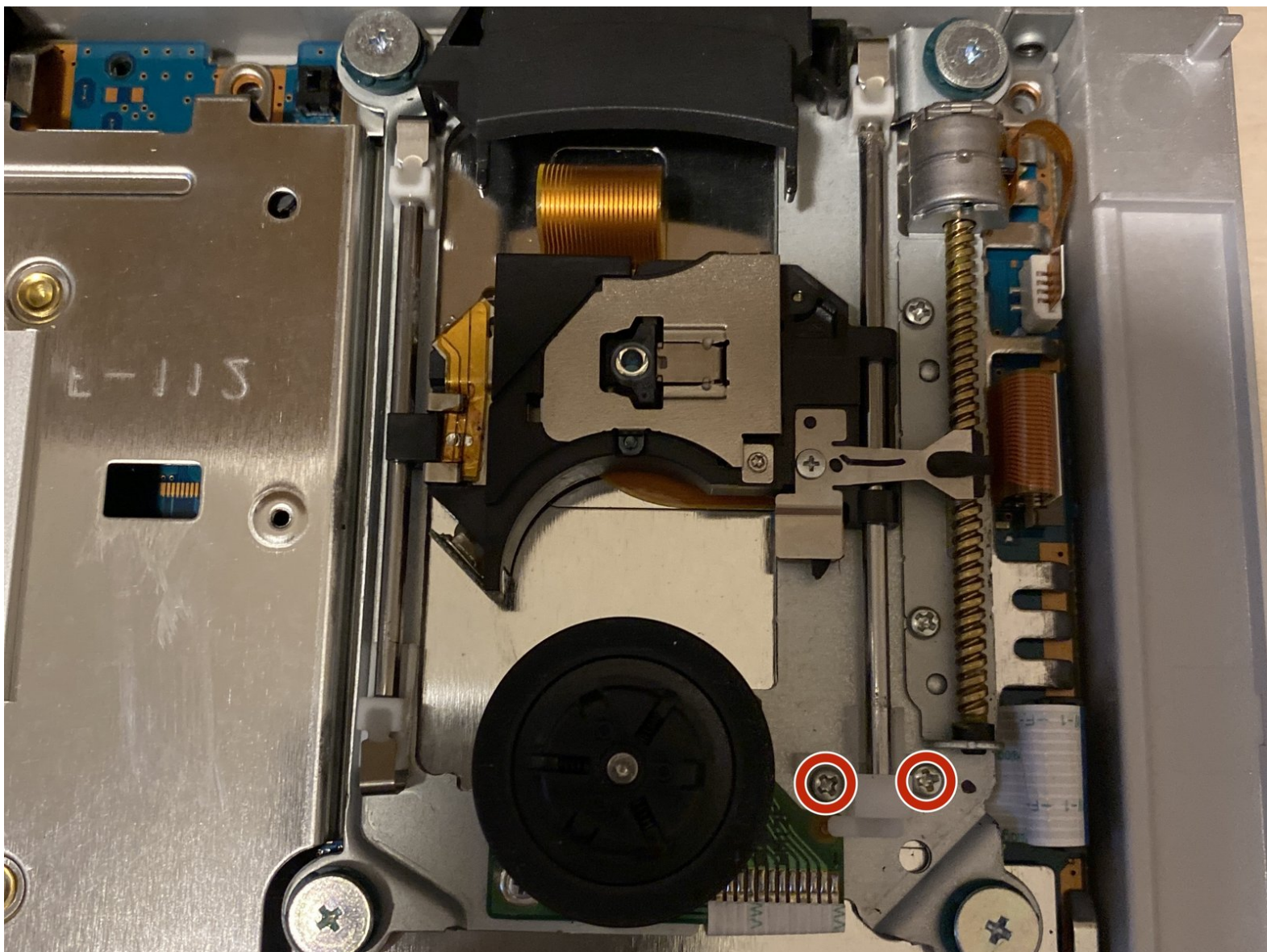




PlayStation 2 Slimline SPU-3170 Laser Replacement

Replace SPU-3170(G) laser for the PS2 Slim.

Written By: koppie007



INTRODUCTION

Hi!

This guide will explain how to replace the laser for the PS2 Slim.

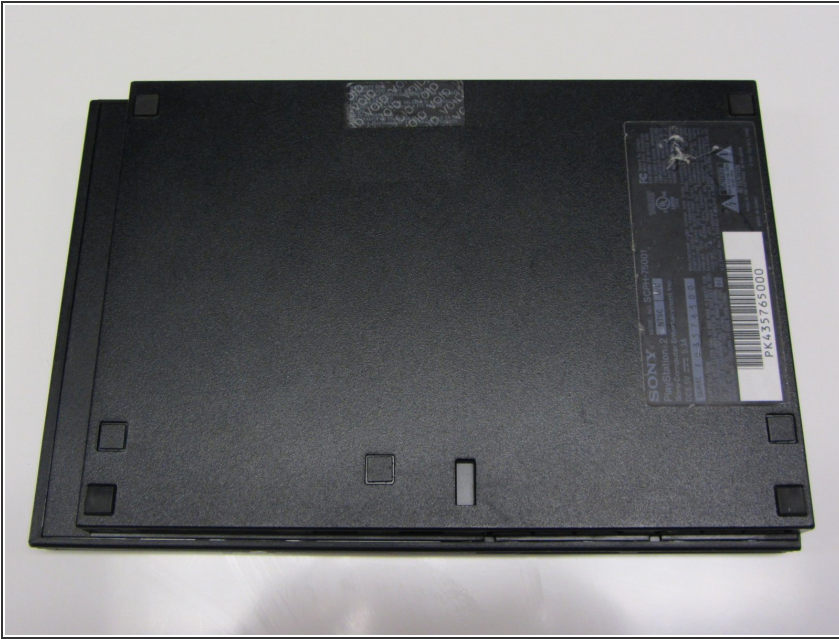
Note: There are 2 different lasers available for the PS2 Slim, this guide is only for replacing the SPU-3170(G).



TOOLS:

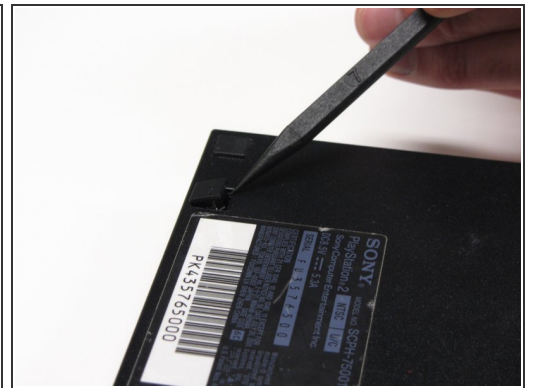
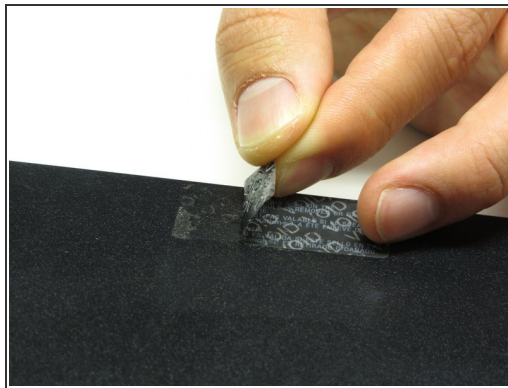
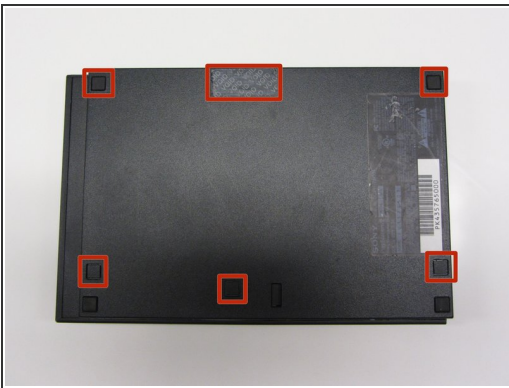
- [Phillips #1 Screwdriver](#) (1)
 - [Spudger](#) (1)
 - [Phillips #0 Screwdriver](#) (1)
-

Step 1 — Outer Shell



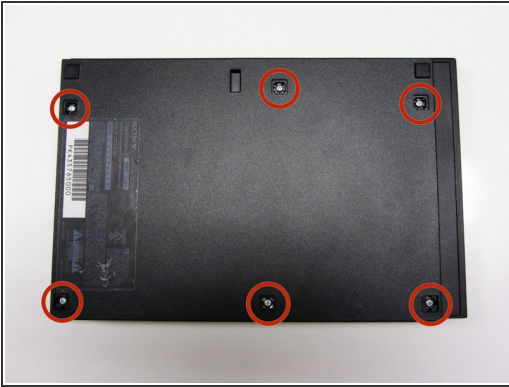
- Disconnect all cables from the console and flip the unit over to reveal its base.

Step 2



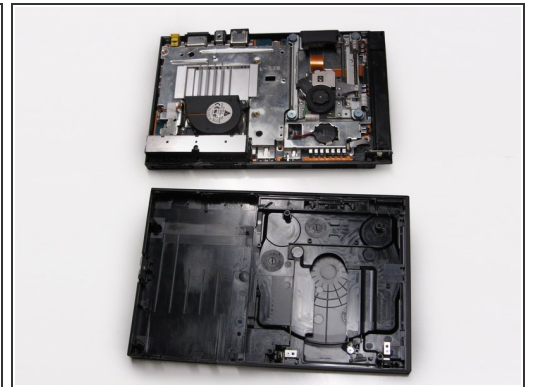
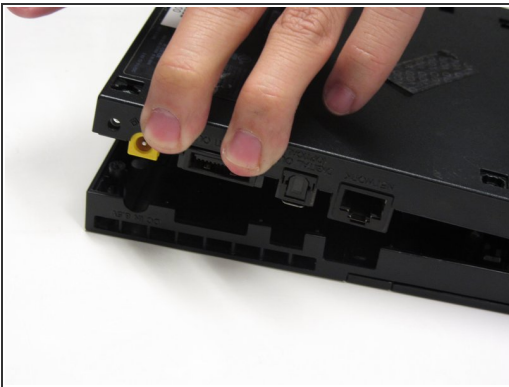
- Locate the 6 feet on the base of the unit. Pry them off using a spudger to reveal the screws.
- ⓘ Note: One of the feet is located under the sticker shown in the photo. Removing this sticker will void any warranty with Sony.

Step 3




- Remove all six 4.0 mm screws from the base of the unit using a #1 Phillips screwdriver.

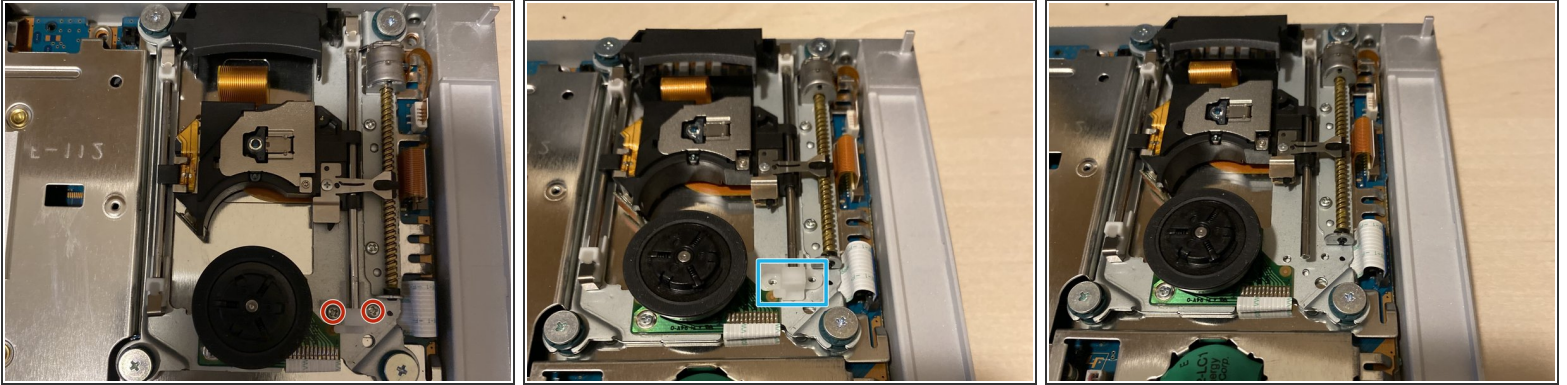
Step 4



- Starting at the corner at which the power and Ethernet ports are located, pry open the outer shell using a spudger and continue around the entire unit.

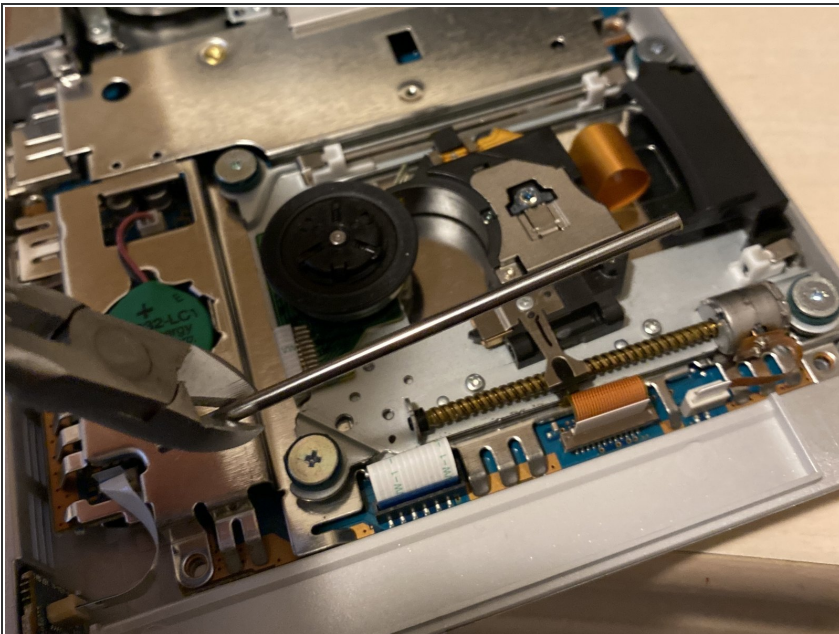
 Note: You may use your hands for additional force to separate the two pieces of the outer shell.

Step 5 — Remove screws and white tab



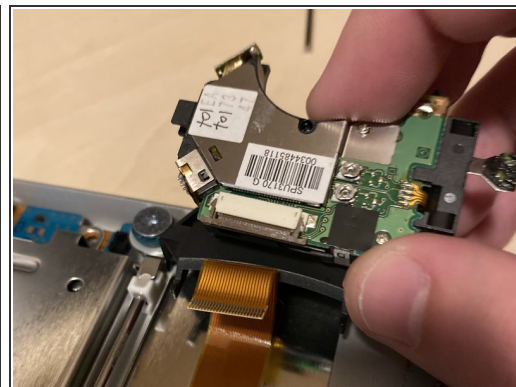
- Remove the 2 philips screws, marked in red.
- Remove the white plastic slider holder.
- Picture 3 shows how it should be done.

Step 6 — Remove slider



- Remove the slider as shown in the picture. You could do this with your fingers, otherwise take tweezers to remove it.

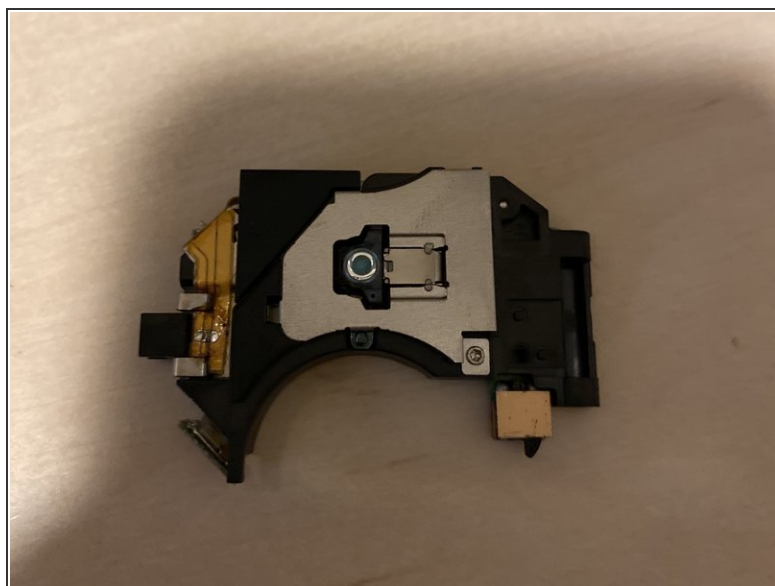
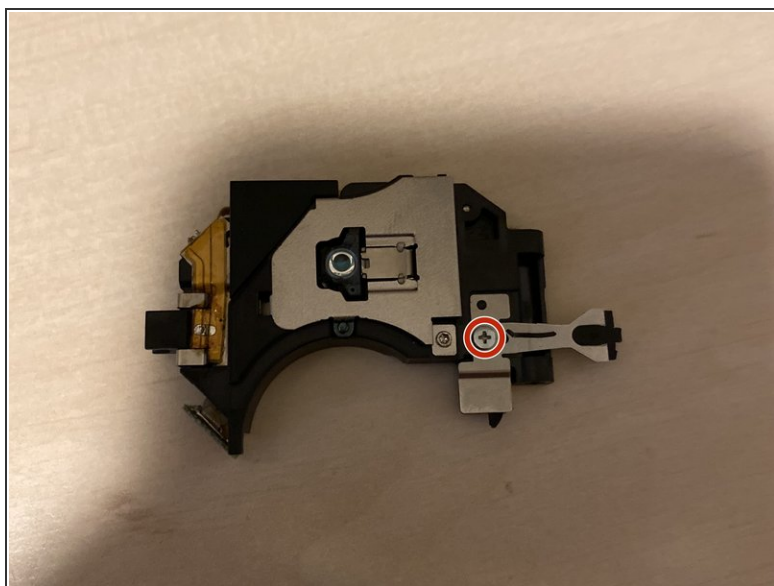
Step 7 — Disconnect the laser



 **Do not remove the laser yet!**

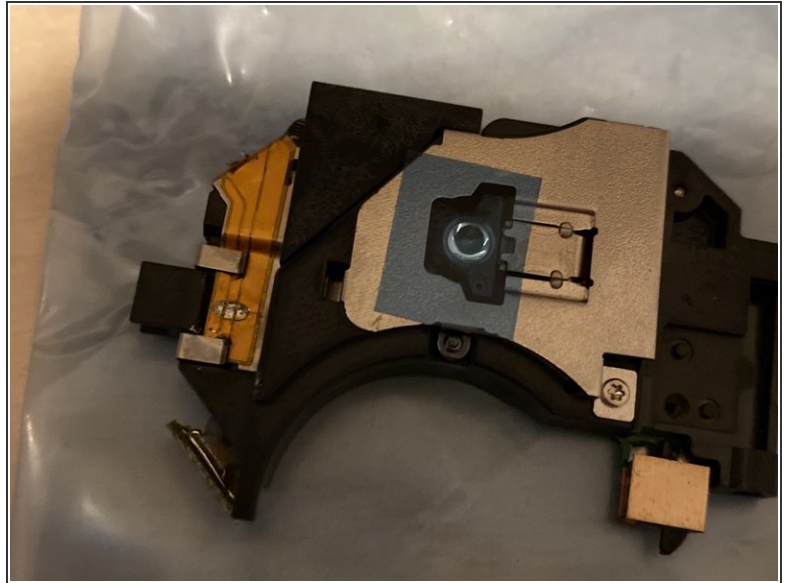
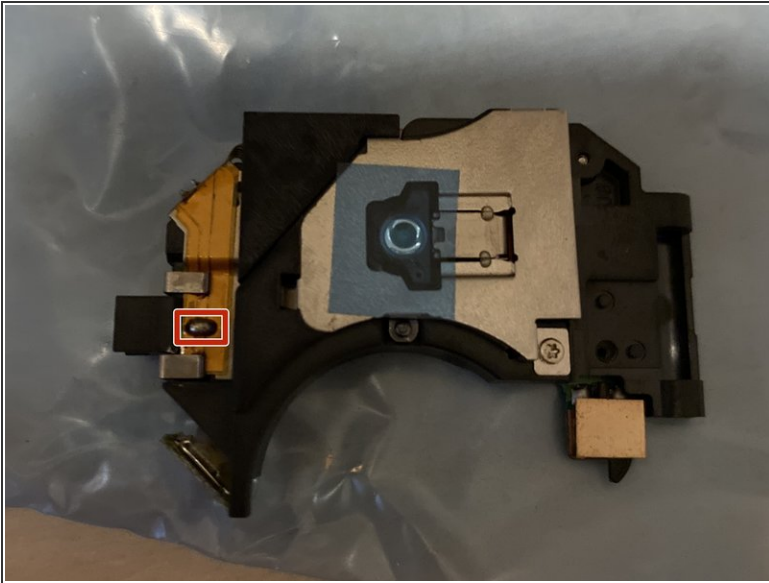
- Take the laser out of the rail and rotate it.
- Open up the connector by both sides with your fingernail or spudger. Be **EXTREME** carefull here, as it can break easily! (if the laser is broken, it won't matter, you can even practice on the broken laser).
- Take the ribbon cable out, it should come out with ease.

Step 8 — Transfer slider



- Remove the philips screw from the laser and take off the slider.
- Transfer the slider to the new laser and screw it down.

Step 9 — Desolder anti-static security

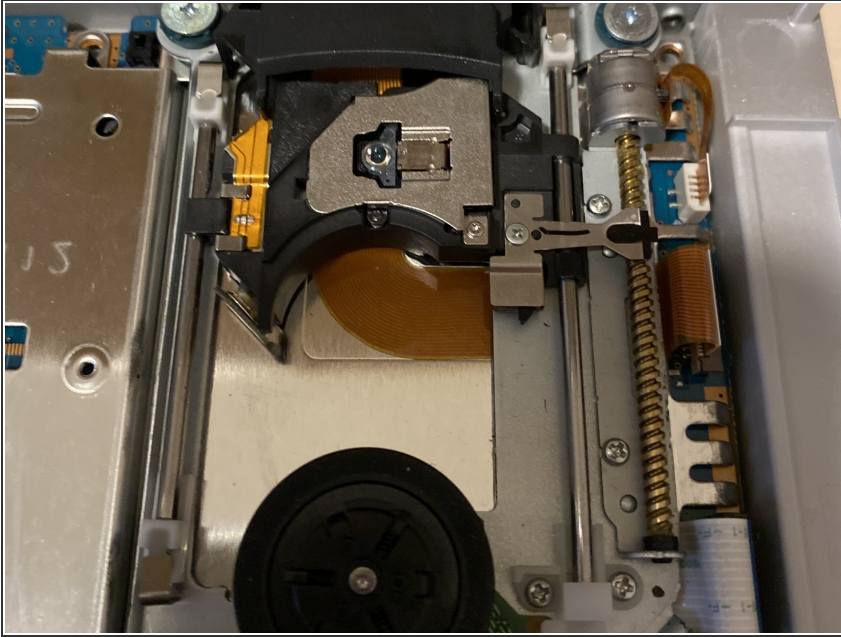


- Most of the lasers have some solder on it for the anti-static security. You NEED to remove the solder, otherwise it won't work. Remove the solder with desolder wick.

⚠ You need a soldering station to DESOLDER the anti-static (if it's there), without desoldering it, the laser could be busted!!

- 2nd picture shows how it should be done. If you have the same result, your good to go. If you are not sure, just use your soldering iron again to remove some more (don't hold it too long on it, otherwise you could damage something).

Step 10 — Laser assembly



- Remove the blue sticker from the laser (if it has one). Put the laser back in and all other removed components (follow guide in reverse order). When you've put everything back, it should look like the provided picture.

To reassemble your device, follow these instructions in reverse order. Do not forget to transfer the slider from the old laser to the new one!