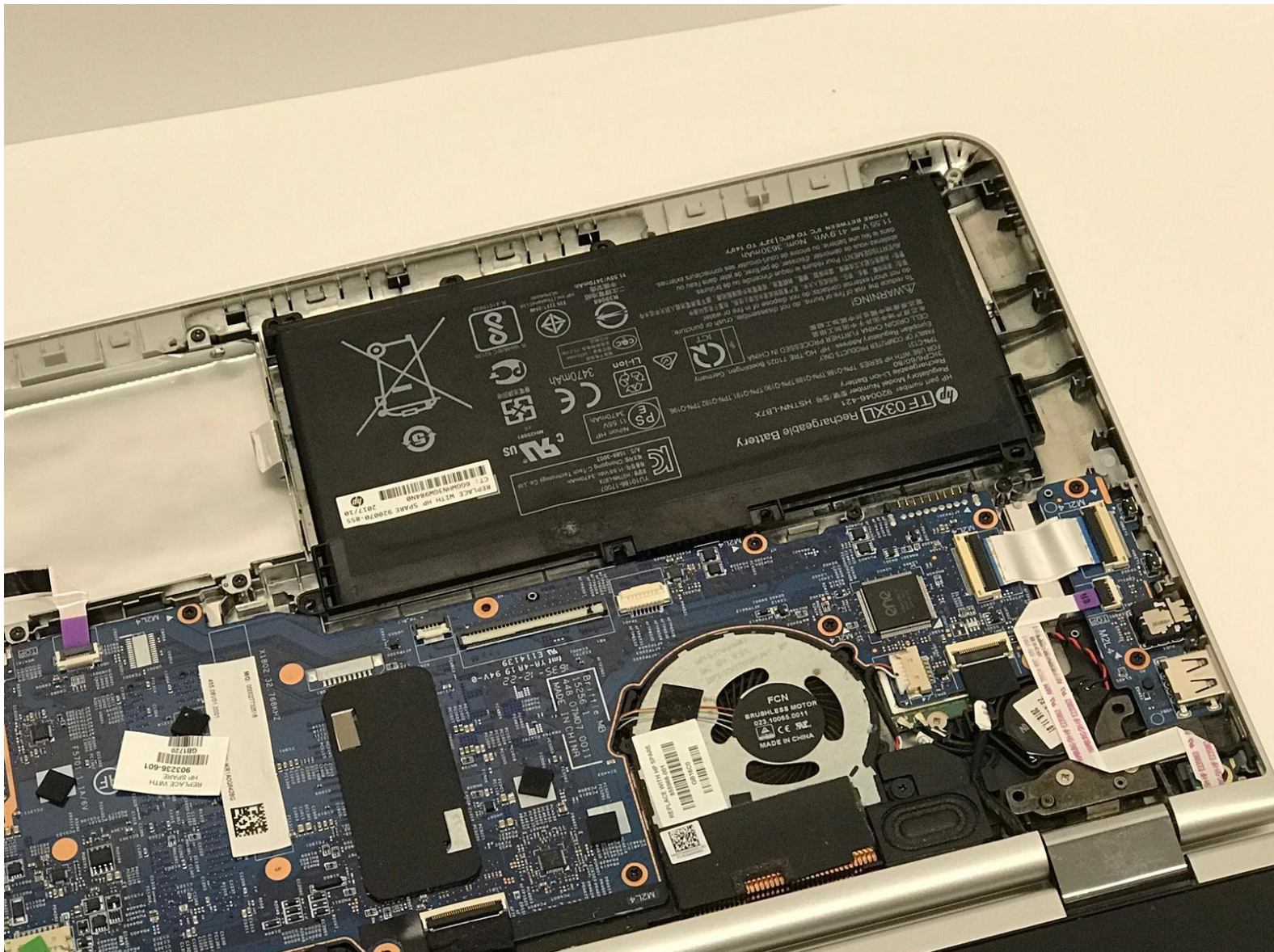




HP Pavilion x360 m3-u101dx Battery Replacement

This guide will show you how to replace the battery in the HP Pavilion x360 m3-u101dx.

Written By: Tyler Padutsch



INTRODUCTION

The battery is what keeps the HP Pavilion x360 m3-u101dx running without the requirement of it being plugged in. Over time, batteries tend to lose their peak maximum charge, so when the time comes to replace the battery, this guide will help. You will know your battery needs replacing once its total powered-on time is less than what you are willing to deal with.

A quick fix to lengthen the battery before replacing it is to limit your processor's clocking speed. This can be done by simply left clicking the battery icon on the taskbar, and moving the Power Mode slider all the way to the left.

Before you begin, ensure the laptop is turned completely off and is NOT plugged in.



TOOLS:

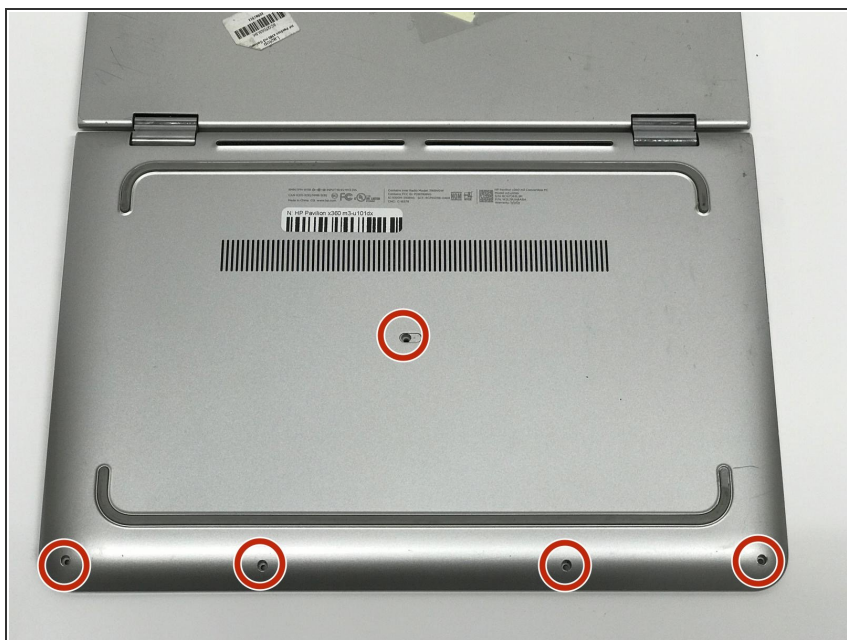
- [iFixit Opening Tools](#) (1)
 - [Phillips #1 Screwdriver](#) (1)
-

Step 1 — Keyboard Panel



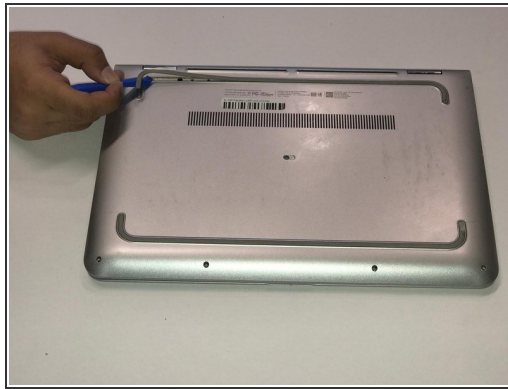
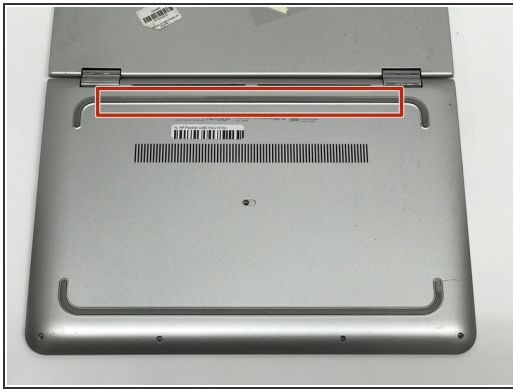
- Flip the laptop over so that the bottom of the laptop is facing up.

Step 2



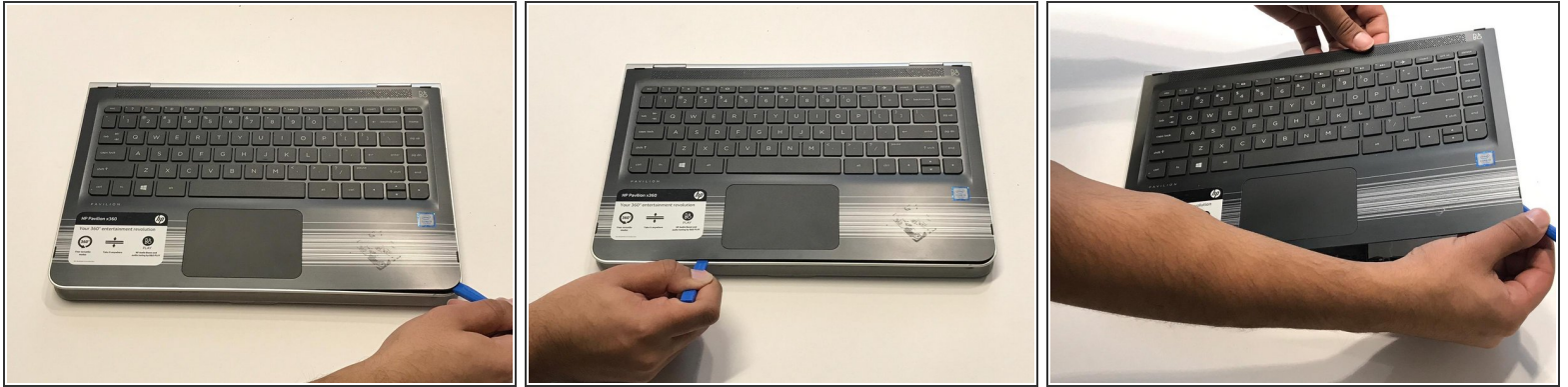
- Remove five 1.4mm Phillips #1 screws from the bottom of the laptop.

Step 3



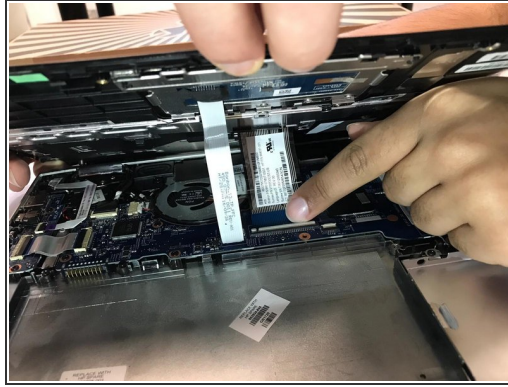
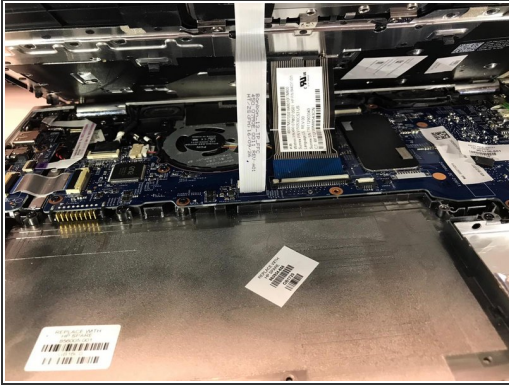
- Remove the rubber grip using a plastic opening tool.
- Remove five 1.7mm Phillips #1 screws.

Step 4



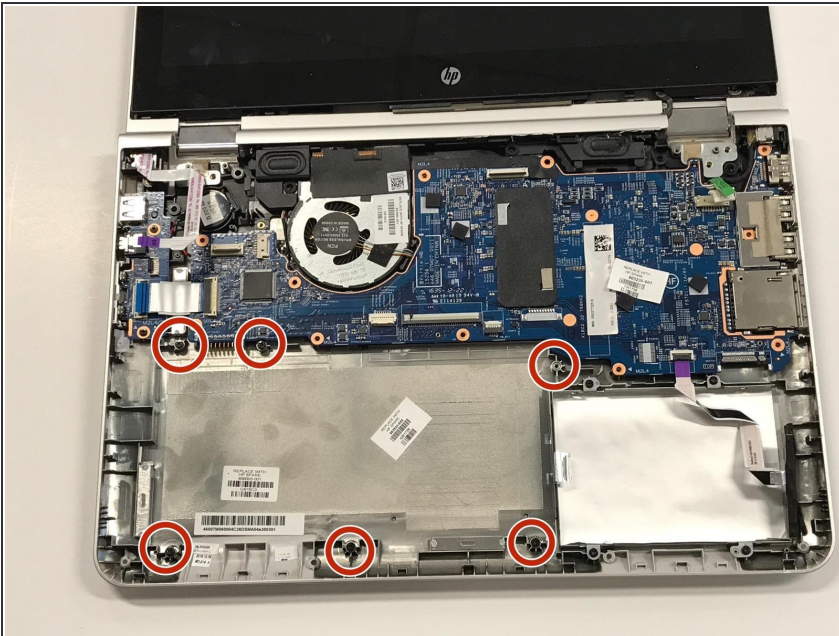
- Lift open the laptop screen and flip it around so that the keyboard is facing up.
 - Insert a plastic opening tool into one of the corners to create a gap between the bottom panel and the keyboard panel.
 - Guide the plastic opening tool around the perimeter of the panel to detach all the clips that are supporting it in place.
- ⚠ Do not pull the panel off by one corner as it can cause damage to the plastic.
- Detach the keyboard panel from the frame.
- ⚠ There are two ribbon cables attached to the keyboard and trackpad so do not pull the keyboard panel away until you disconnect these ribbons in the next step.

Step 5



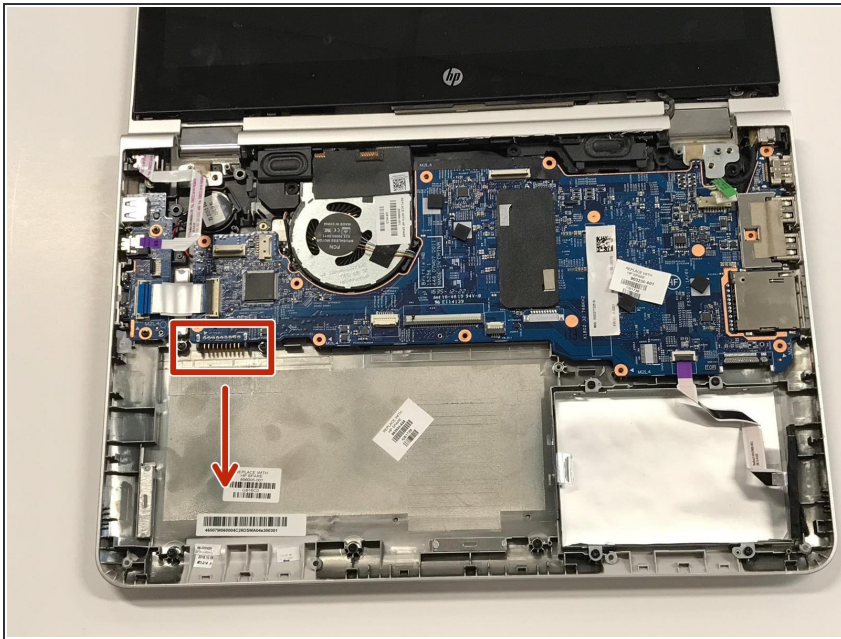
- Remove the two ribbon cables connected to the inside of the laptop by using a finger to lift up on the latches.
- Remove the keyboard panel from the rest of the laptop.

Step 6 — Battery



- Remove the six 4.6mm Phillips #1 screws from the edges of the battery.
- ⓘ This device is missing the battery.

Step 7



- Gently lift the battery and bring downward away from its port to remove it from the laptop.

To reassemble your device, follow these instructions in reverse order.