



HP Pavilion x360 m3-u101dx Hard Drive Replacement

A hard drive is the house of all applications...

Written By: Tyler Padutsch



INTRODUCTION

A hard drive is the house of all applications on a computer, including Windows. Without one there would be almost no functionality to the device. It helps with or is used to download and use applications, save files, and almost everything else you'd do with your computer.

A hard drive can fail for a multitude of reasons: dropping the laptop, normal “wear and tear,” or even a manufacturing defect. Issues with a hard drive can be noticed by irregular noises, inability to access certain files, and less total storage than when you initially purchased the laptop.

Before you begin the process of replacing the HP Pavilion x360 m3-u101dx hard drive, refer to the [troubleshooting page](#), hard drive section. This page will ensure that the hard drive needs replacing and not a different part. Ensure that the computer is turned completely off, and NOT plugged in when beginning.



TOOLS:

- [iFixit Opening Tool](#) (1)
- [Phillips #1 Screwdriver](#) (1)



PARTS:

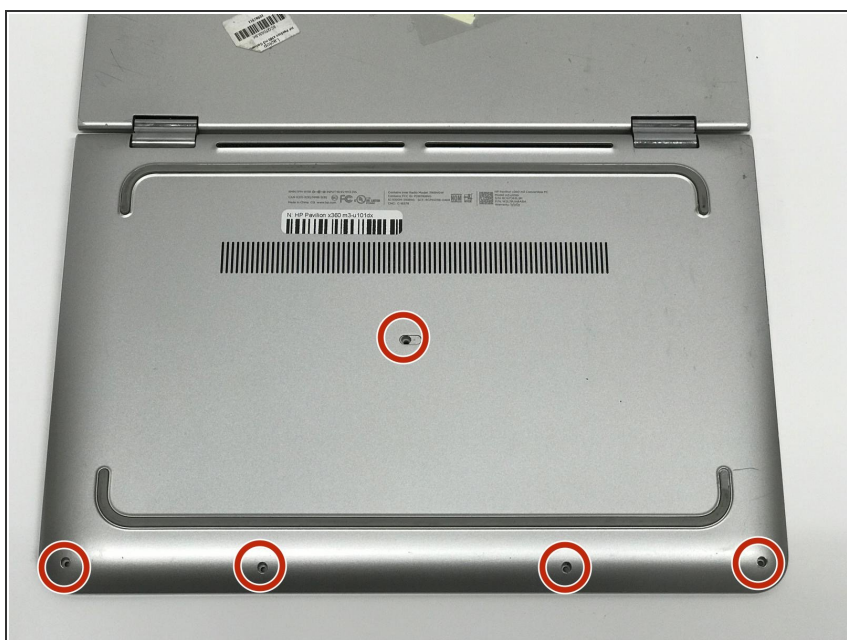
- [1 TB SSD](#) (1)
- [Crucial MX500 250 GB SSD](#) (1)
- [Crucial MX500 500 GB SSD](#) (1)
- [Crucial MX500 2 TB SSD](#) (1)

Step 1 — Keyboard Panel



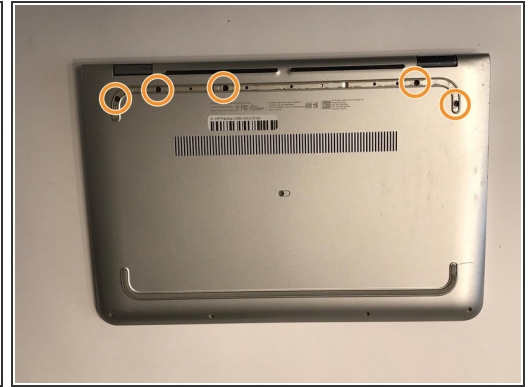
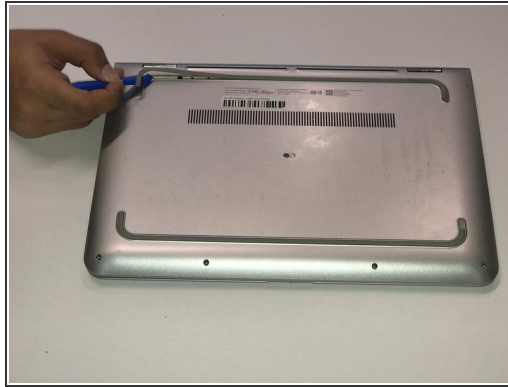
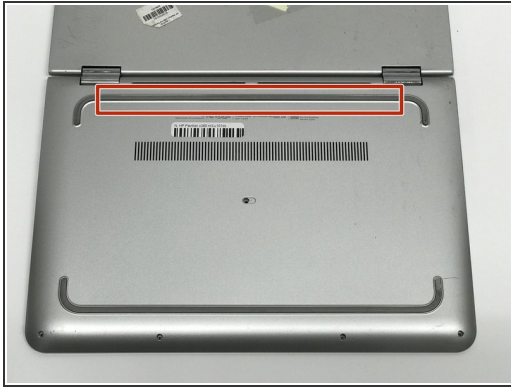
- Flip the laptop over so that the bottom of the laptop is facing up.

Step 2



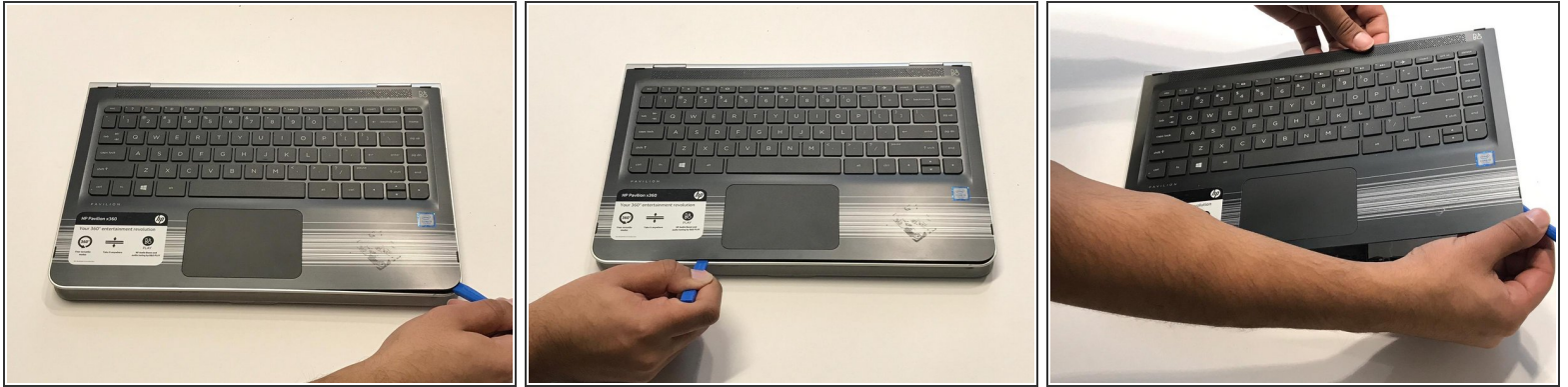
- Remove five 1.4mm Phillips #1 screws from the bottom of the laptop.

Step 3



- Remove the rubber grip using a plastic opening tool.
- Remove five 1.7mm Phillips #1 screws.

Step 4



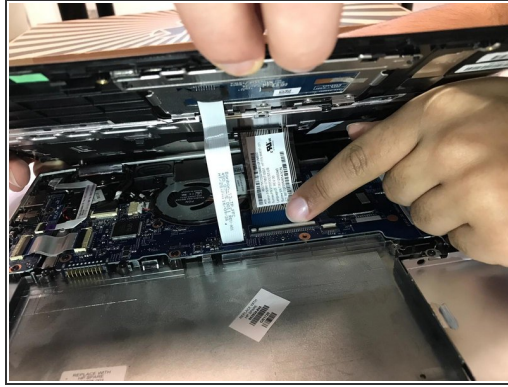
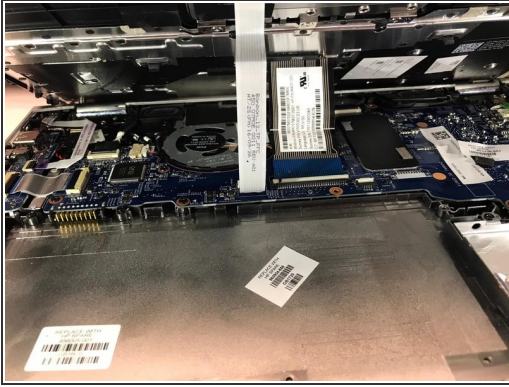
- Lift open the laptop screen and flip it around so that the keyboard is facing up.
- Insert a plastic opening tool into one of the corners to create a gap between the bottom panel and the keyboard panel.
- Guide the plastic opening tool around the perimeter of the panel to detach all the clips that are supporting it in place.

⚠ Do not pull the panel off by one corner as it can cause damage to the plastic.

- Detach the keyboard panel from the frame.

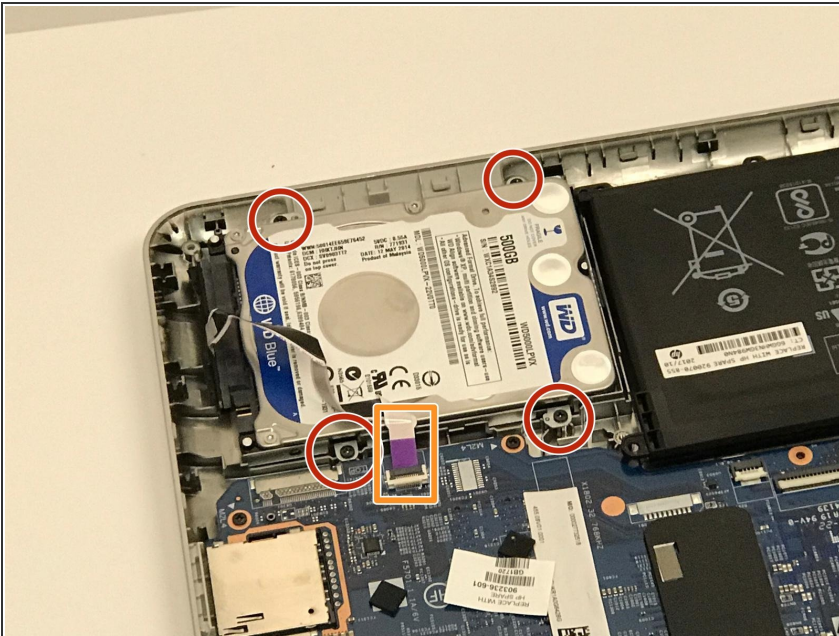
⚠ There are two ribbon cables attached to the keyboard and trackpad so do not pull the keyboard panel away until you disconnect these ribbons in the next step.

Step 5



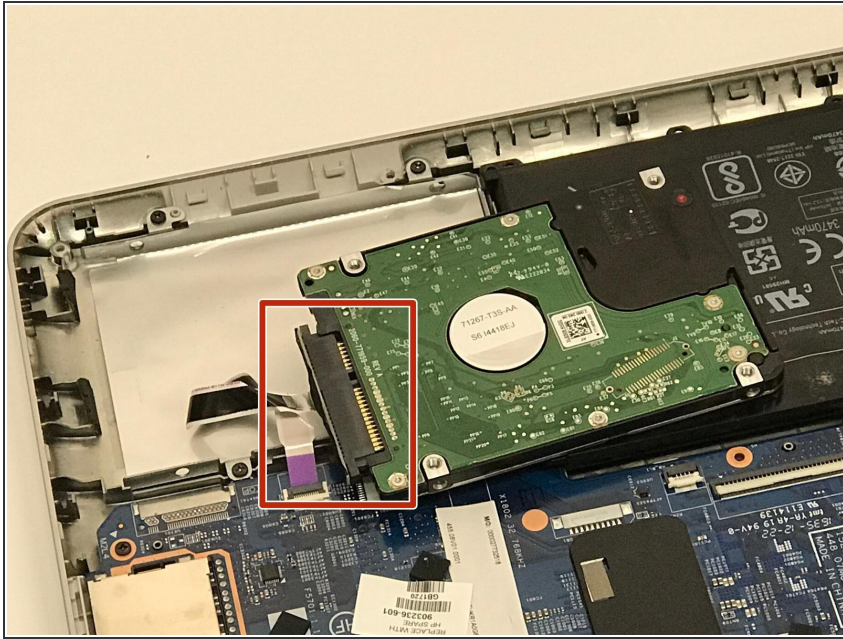
- Remove the two ribbon cables connected to the inside of the laptop by using a finger to lift up on the latches.
- Remove the keyboard panel from the rest of the laptop.

Step 6 — Hard Drive



- Remove the four 3.7mm Phillips #1 screws holding the hard drive in place.
- Remove the SATA cable from the motherboard.

Step 7



- Unplug the SATA cable from the hard drive.
- Gently remove the hard drive from the computer case.

To reassemble your device, follow these instructions in reverse order.