



# Acer Aspire One D255-1625 Keyboard Replacement

A guide showing how to replace the keyboard in an Acer Aspire One D255-1625 laptop.

Written By: Zahria Martin



## INTRODUCTION

If the Acer Aspire One D255-1625 keyboard malfunctions, use this guide to correctly replace the keyboard.

The keyboard translates the letters typed from the keyboard onto the screen. This is important when typing in a website address, writing a paper, and many other functions, so if the keyboard malfunctions, the computer becomes useless.

If this occurs, make sure the keyboard is correctly connected to the netbook. To check connection, follow the guide for assistance in removing the keyboard.



### TOOLS:

- [Jimmy](#) (1)




### PARTS:

- [Acer Aspire One D255 Keyboard](#) (1)

## Step 1 — Battery




 Before you replace the battery, ensure that the device is unplugged and powered off.

- Pull the upper left switch on the back of the laptop to the left into the unlock position.
- Pull the upper right switch to the left and hold it in place.

## Step 2



- Pull the battery straight out.
-  To properly dispose of battery, locate your nearest recycling plant to dispose of it there.

## Step 3 — Keyboard



- Use iFixit's Jimmy tool and press it into the small tabs at the top of the keyboard and lift up.
- Do this for all five tabs at the top of the keyboard.

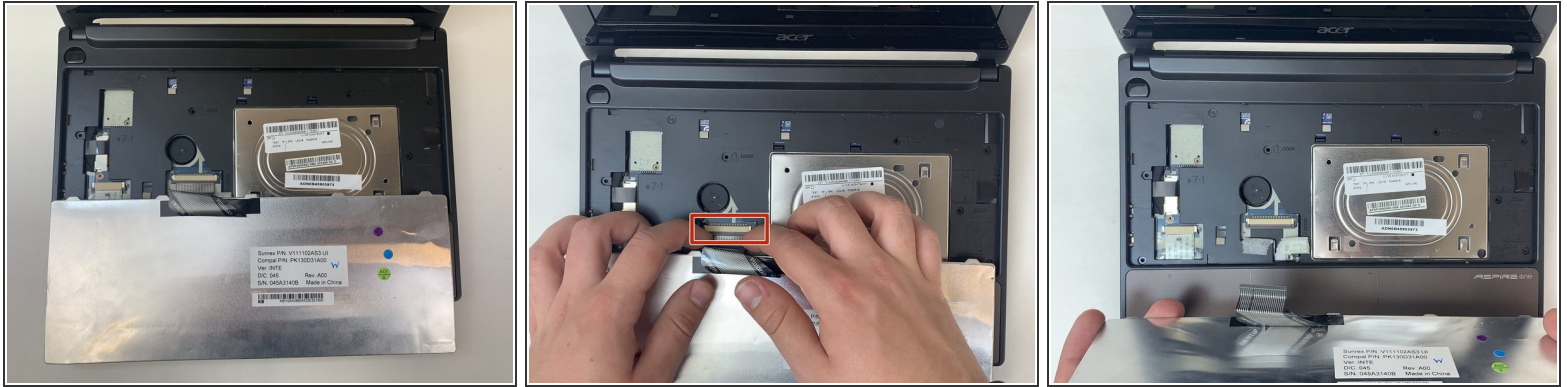
## Step 4



- Slide the Jimmy tool along the top of the keyboard once all tabs have been pressed in.



## Step 5



- Flip the keyboard forward to expose its connection.
  - Slide the small brown tab out to disconnect the keyboard.
  - Lift the keyboard away from the laptop.
- i** If you see that the keyboard is not connected upon flipping, reconnect it and see if it works. If not, continue to replace the keyboard.

To reassemble your device, follow these instructions in reverse order.