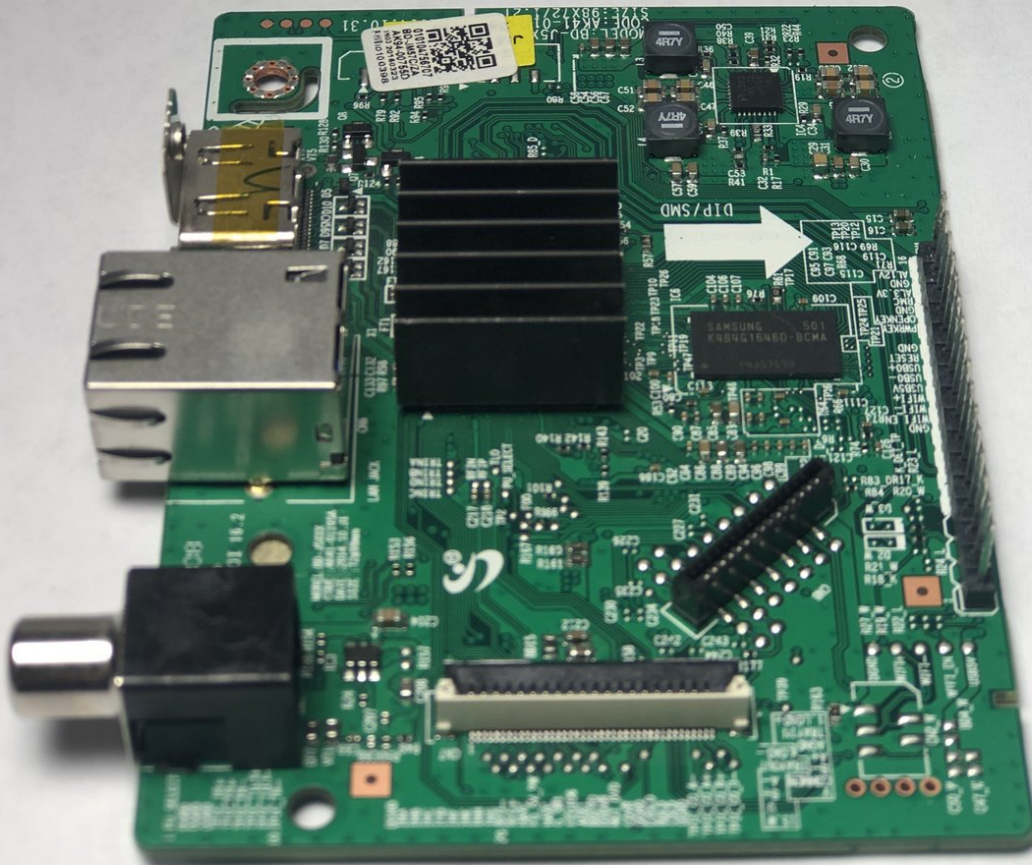




Samsung BD-JM57C Motherboard Replacement

Use this guide to replace the motherboard in your Samsung BD-JM57C blu-ray player.

Written By: Abby Hudson



INTRODUCTION

Follow this guide to replace an old or faulty motherboard in your Samsung BD-JM57C Blu-ray player.

The motherboard in the Blu-ray player allows all the other important components such as the disc drive and Wifi card to communicate with one another. An old or faulty motherboard will prohibit these components from communicating with each other resulting in a Blu-ray player that will ultimately not turn on.

Before taking apart the Blu-ray player and replacing the motherboard, look at the troubleshooting page for the Samsung BD-JM57C and see if your problem can be resolved.



TOOLS:

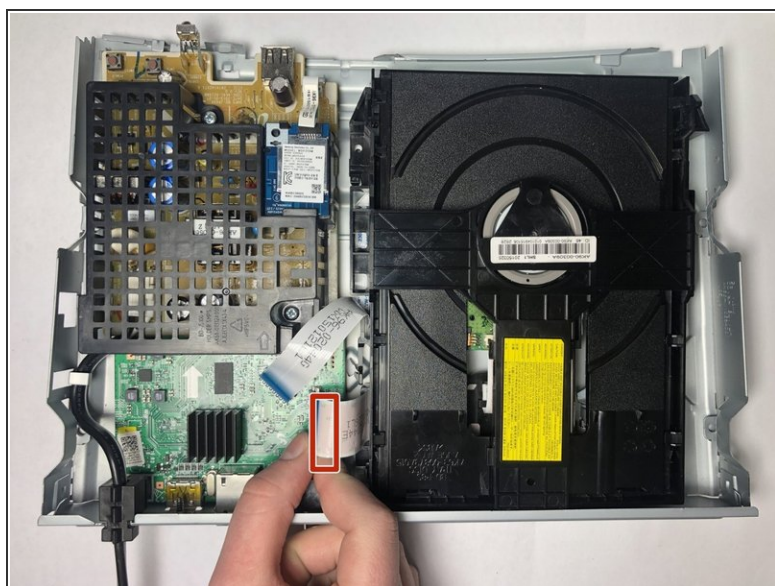
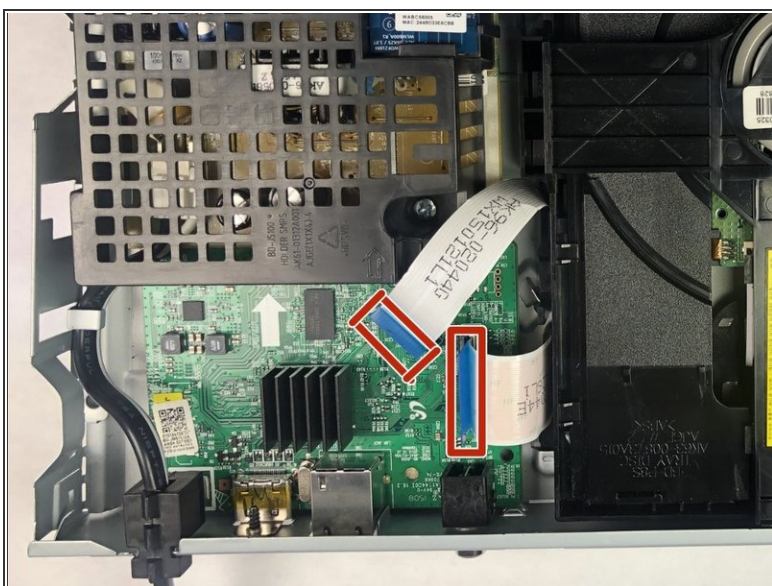
- [Phillips #00 Screwdriver](#) (1)
-

Step 1 — Top Cover



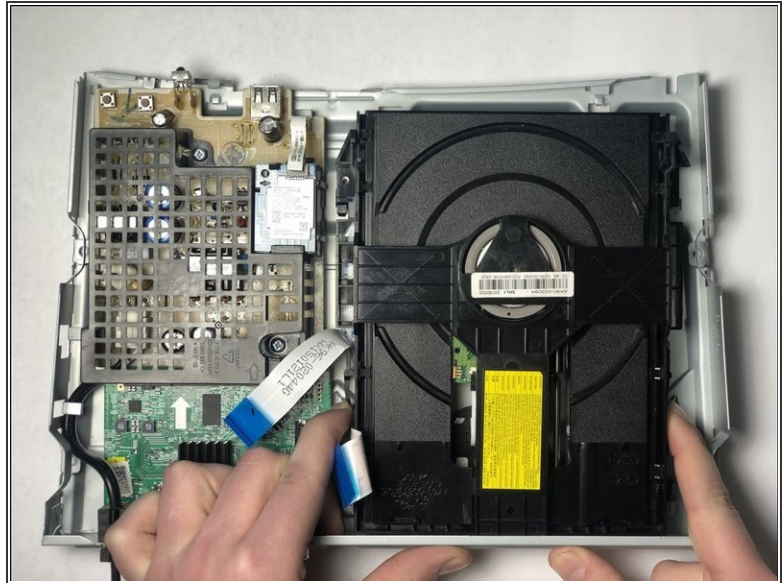
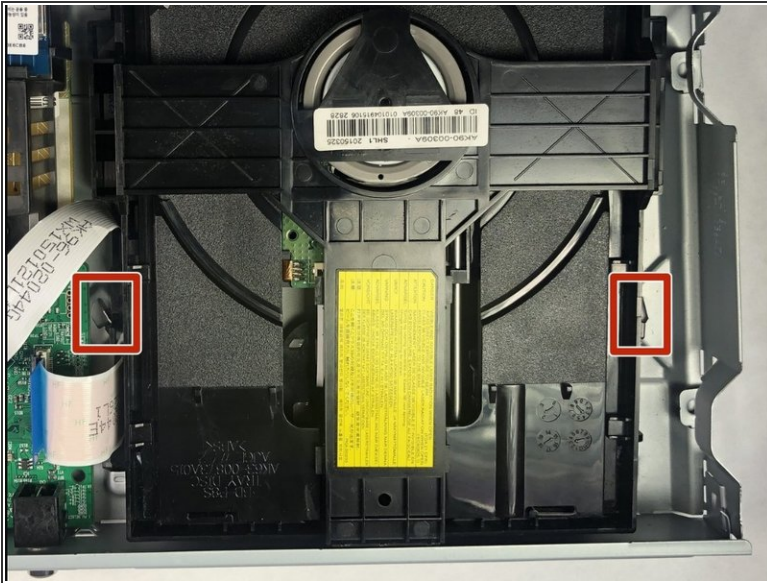
- Use the Phillips #00 Screwdriver to remove the single 9.6mm screw holding the top cover in place.
- Remove the cover by sliding it up and then out.

Step 2 — Disc Drive



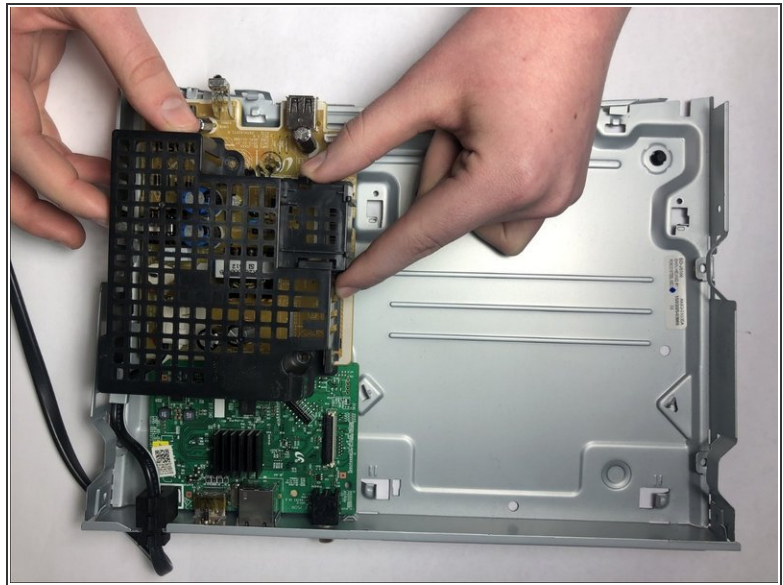
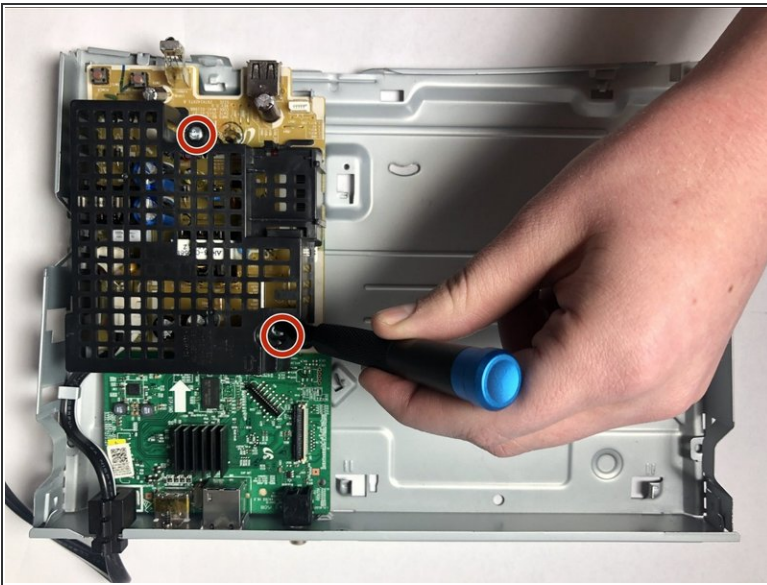
- Disconnect the two ribbons that connect the disc drive to the motherboard.

Step 3



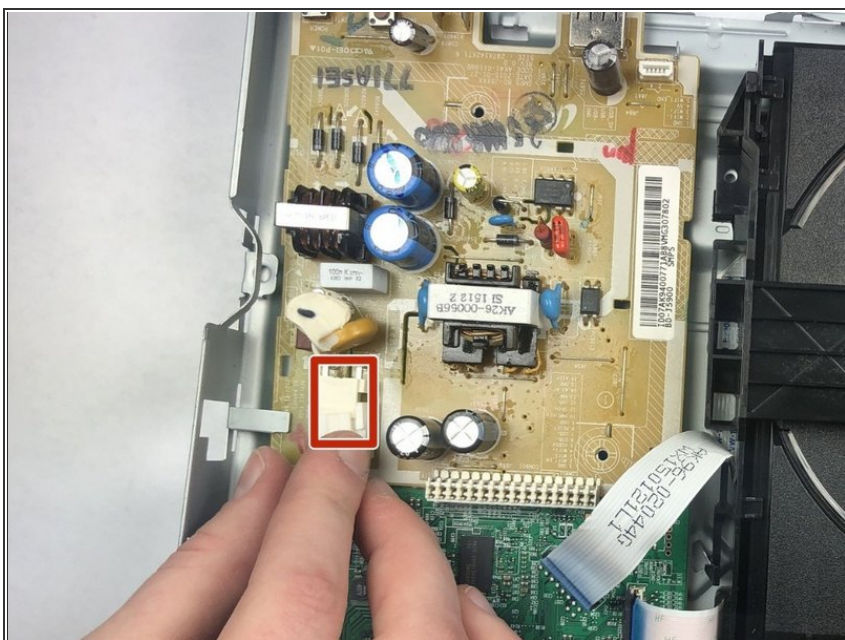
- Push in on the two metal tabs on the side of the disc drive.
- Push forward to slide the disc drive out of the casing.

Step 4 — Power Cord



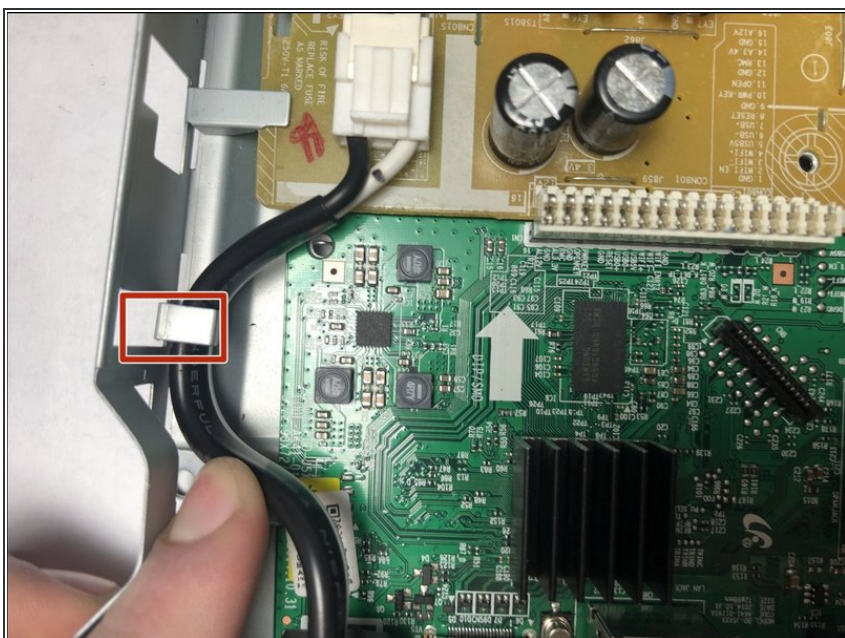
- Use the Phillips #00 Screwdriver to remove the two 6.4 mm screws holding the cage in place.
- Lift the cage up to remove it.

Step 5



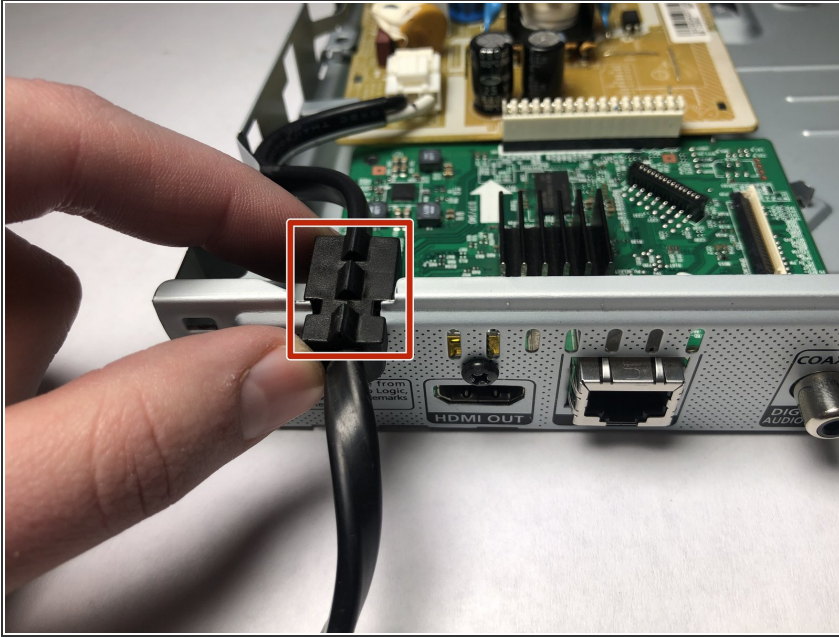
- Push in the small white lever and pull it towards you to release the cord.

Step 6



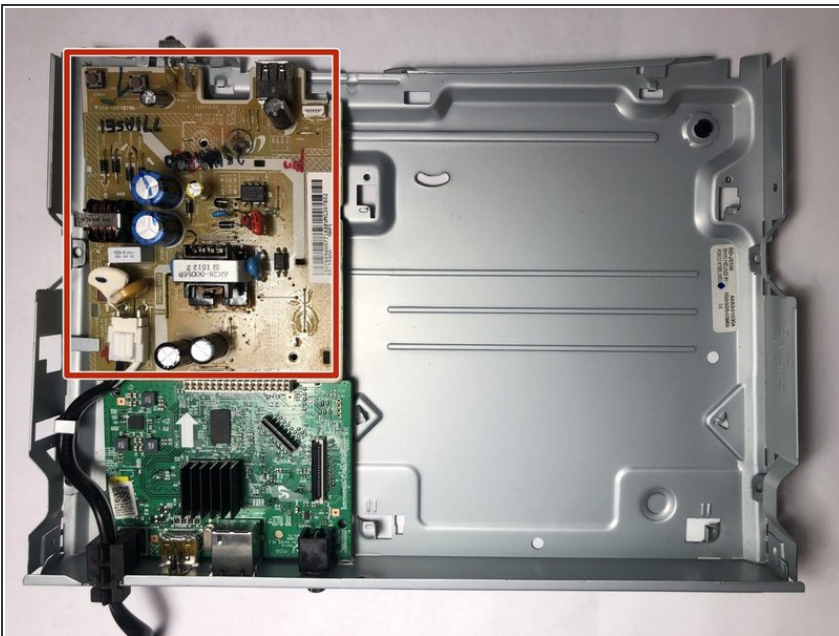
- Move the power cord out from under the metal tab on the side of the case.

Step 7



- Remove the rubber spacer on the edge of the case holding the cord in place.
- Remove the power cord from the device.

Step 8 — Motherboard



- After the power cord has been disconnected, remove the yellow circuit board from the Blu ray player.
- ⓘ There is nothing holding down the circuit board, do not forcefully remove it or try to remove other parts from it.

Step 9



- Use the Phillips #00 screwdriver to remove the 9.7mm screw holding the HDMI port in place on the outside of the case.

Step 10



- Use the Phillips #00 screwdriver to remove the 6.4mm screw holding the motherboard in place.
- Pull the motherboard up to remove it from the device.

To reassemble your device, follow these instructions in reverse order.