



# Samsung BD-JM57C Open Button Replacement

Use this guide to remove the open button in your Samsung BD-JM57C.

Written By: Abby Hudson



---

## INTRODUCTION

Follow this guide to replace a broken or faulty open button on your Samsung BD-JM57C Blu ray player.

The open button on the Blu-ray player allows all the disc tray to open and close, allowing you to insert a DVD or Blu-ray disc. A broken or faulty open button will prohibit the disc tray from operating.

Before taking apart the Blu-ray player and replacing the open button, look at the troubleshooting page for the Samsung BD-JM57C and see if your problem can be resolved.

Make sure the device is not plugged in before working on it.

Soldering is a requirement to complete this guide. Use the [How to Solder and Desolder Connections guide](#) for more information on soldering.



### TOOLS:

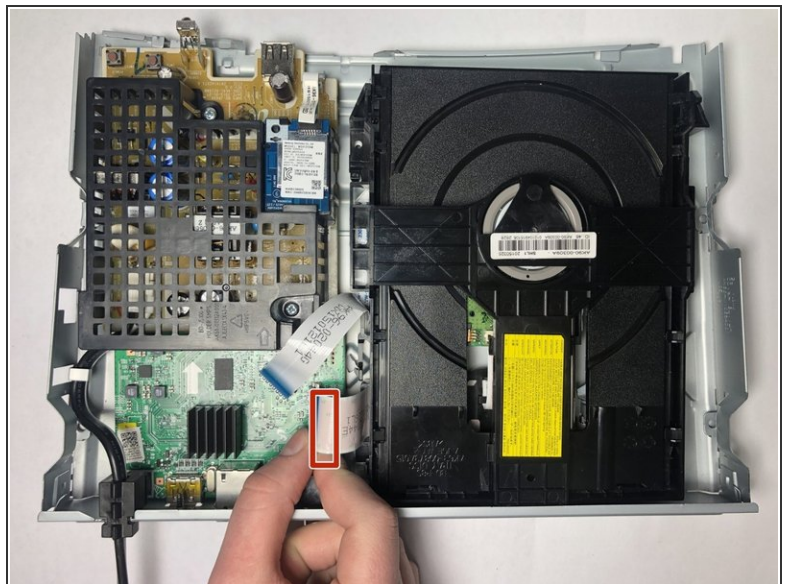
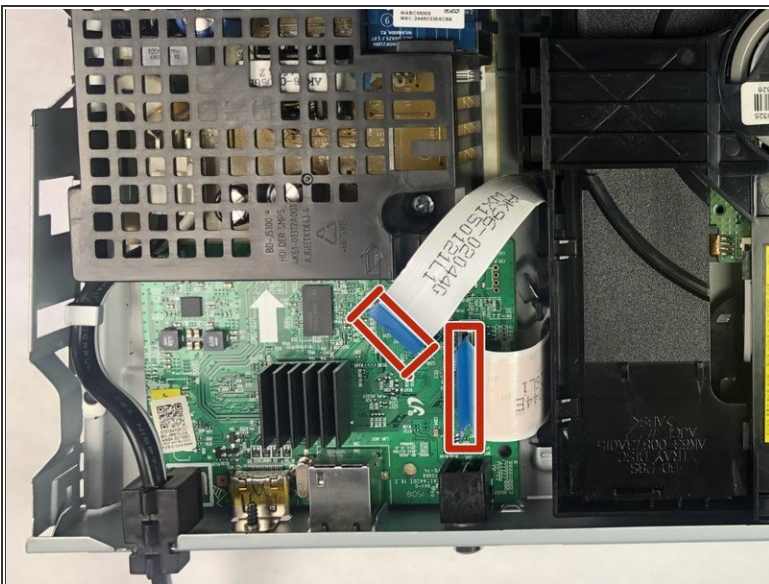
- [Soldering Workstation](#) (1)
  - [Phillips #00 Screwdriver](#) (1)
-

## Step 1 — Top Cover



- Use the Phillips #00 Screwdriver to remove the single 9.6mm screw holding the top cover in place.
- Remove the cover by sliding it up and then out.

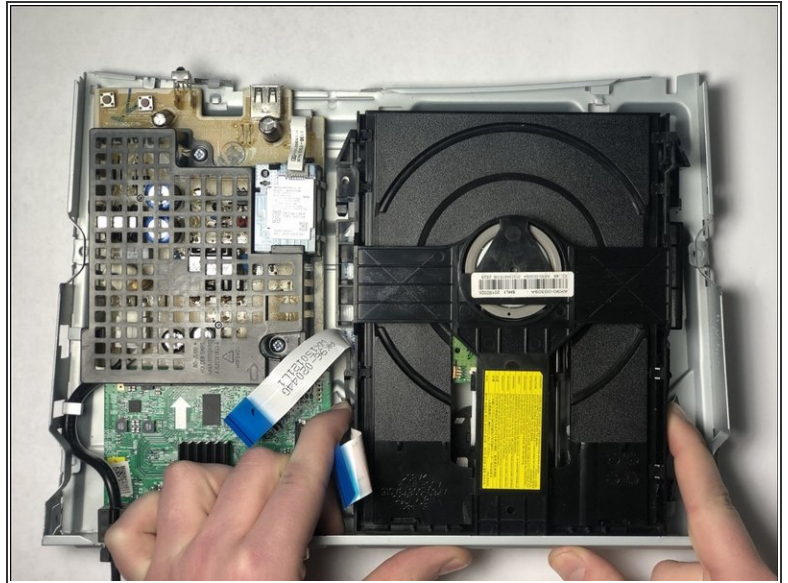
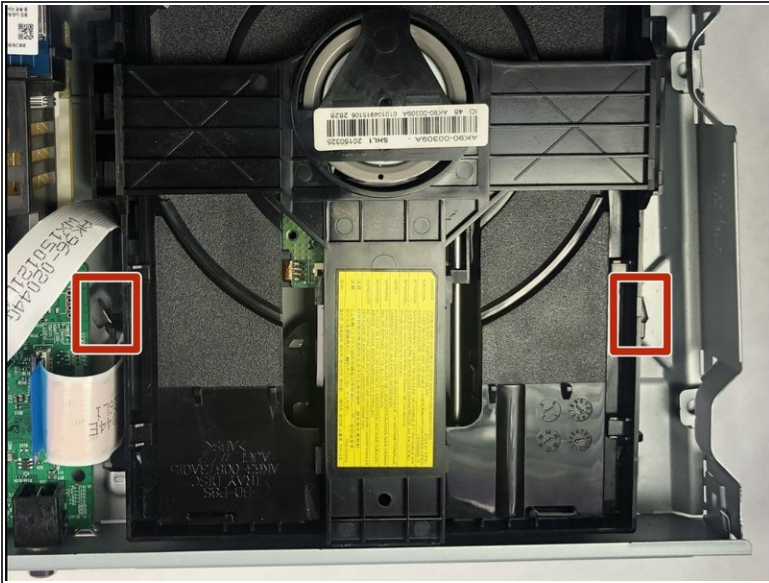
## Step 2 — Disc Drive



- Disconnect the two ribbons that connect the disc drive to the motherboard.

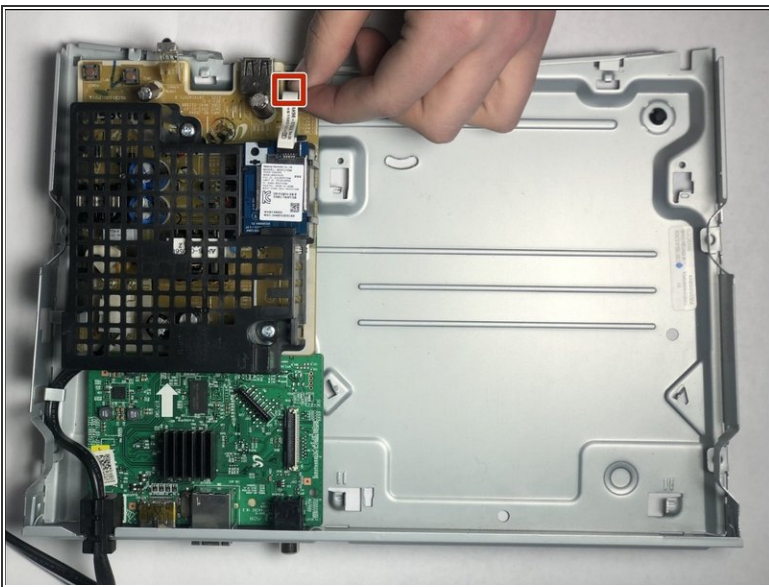


## Step 3



- Push in on the two metal tabs on the side of the disc drive.
- Push forward to slide the disc drive out of the casing.

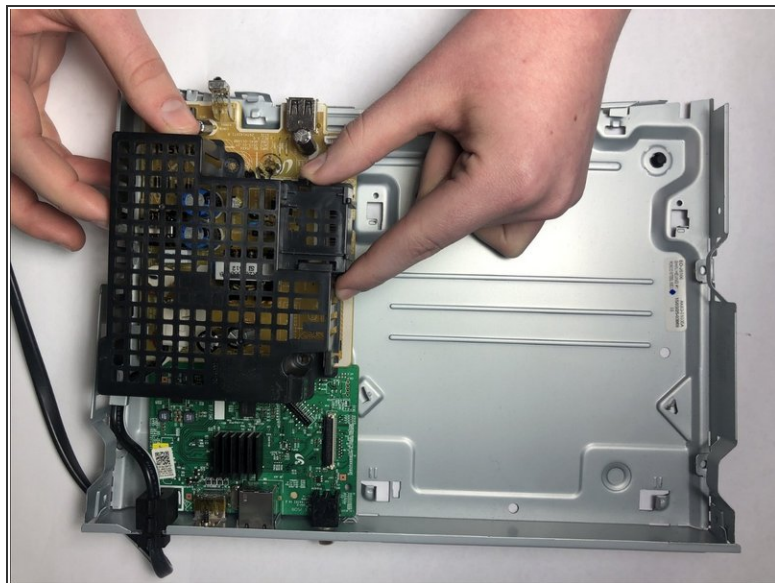
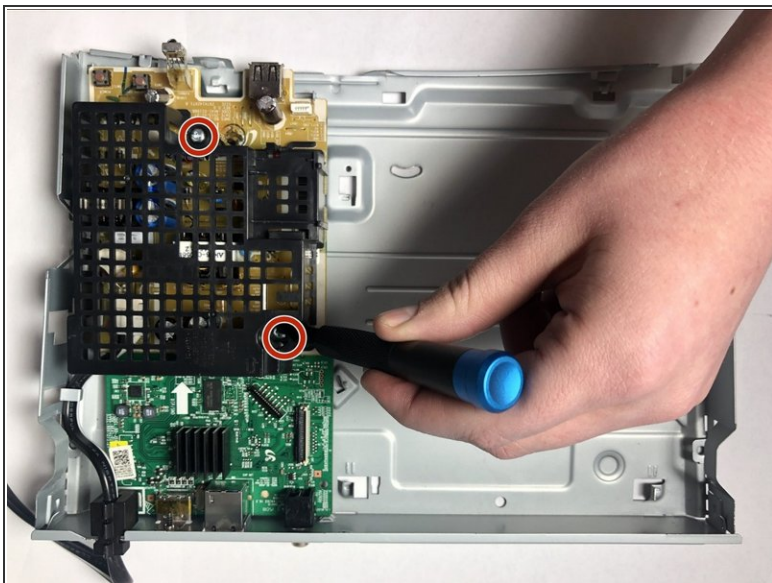
## Step 4 — WiFi Card



- Pull clip to remove the WiFi card ribbon connected to the circuit board.
- Push the black plastic tab out and slide the WiFi card out from the cage.

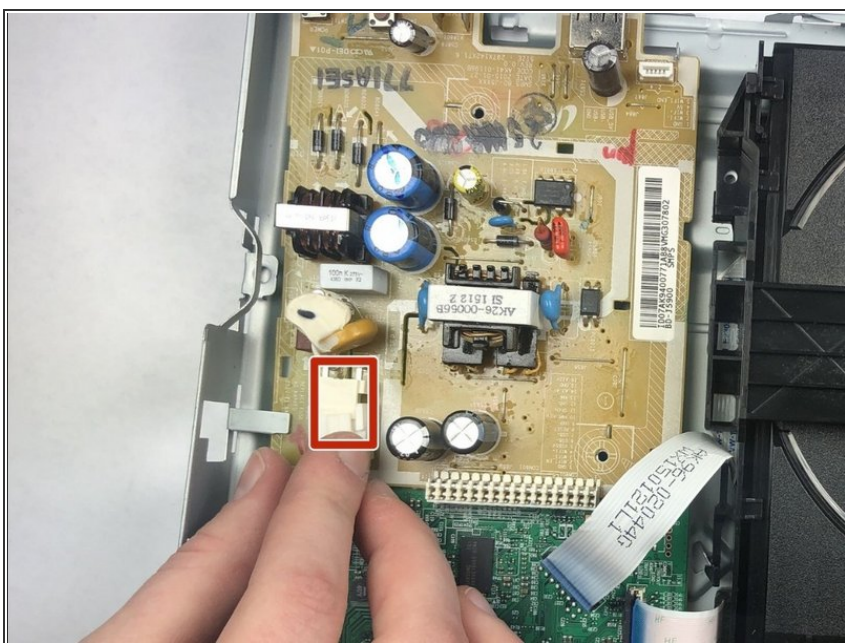


## Step 5 — Power Cord



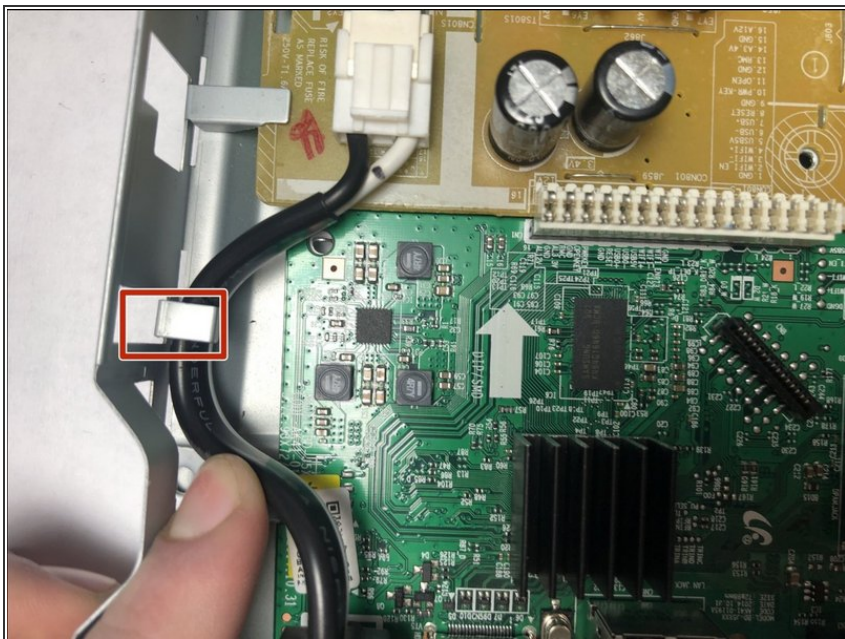
- Use the Phillips #00 Screwdriver to remove the two 6.4 mm screws holding the cage in place.
- Lift the cage up to remove it.

## Step 6



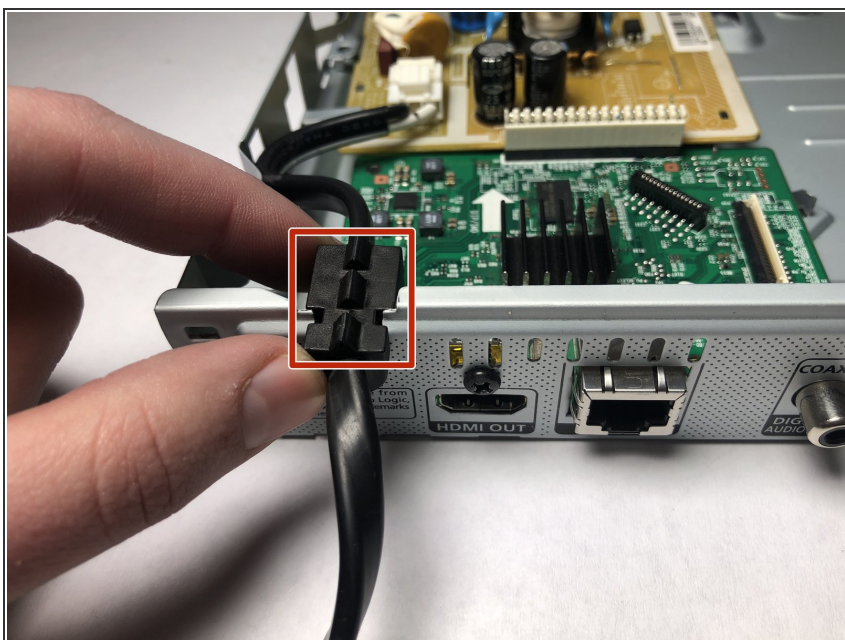
- Push in the small white lever and pull it towards you to release the cord.

## Step 7



- Move the power cord out from under the metal tab on the side of the case.

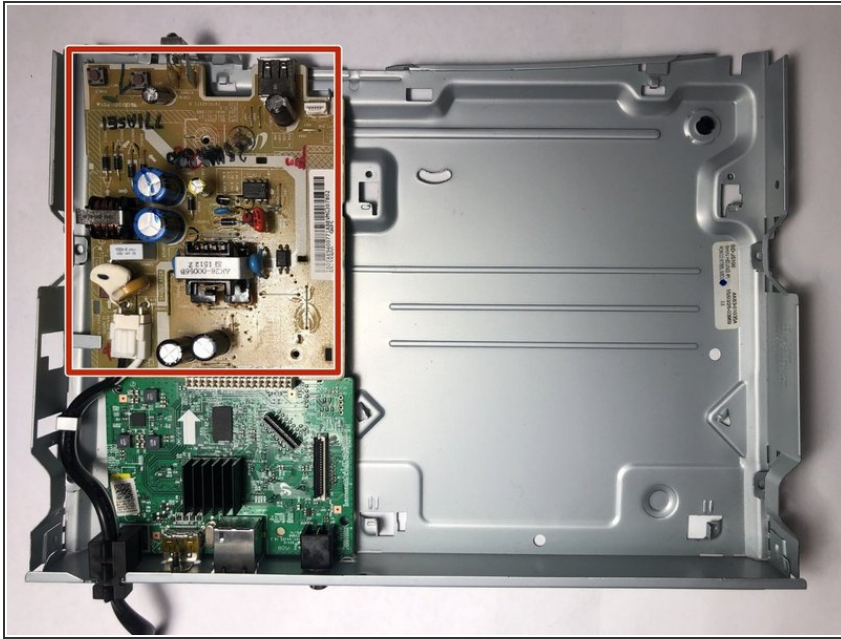
## Step 8



- Remove the rubber spacer on the edge of the case holding the cord in place.
- Remove the power cord from the device.



## Step 9 — Motherboard



- After the power cord has been disconnected, remove the yellow circuit board from the Blu ray player.
- ⓘ There is nothing holding down the circuit board, do not forcefully remove it or try to remove other parts from it.

## Step 10



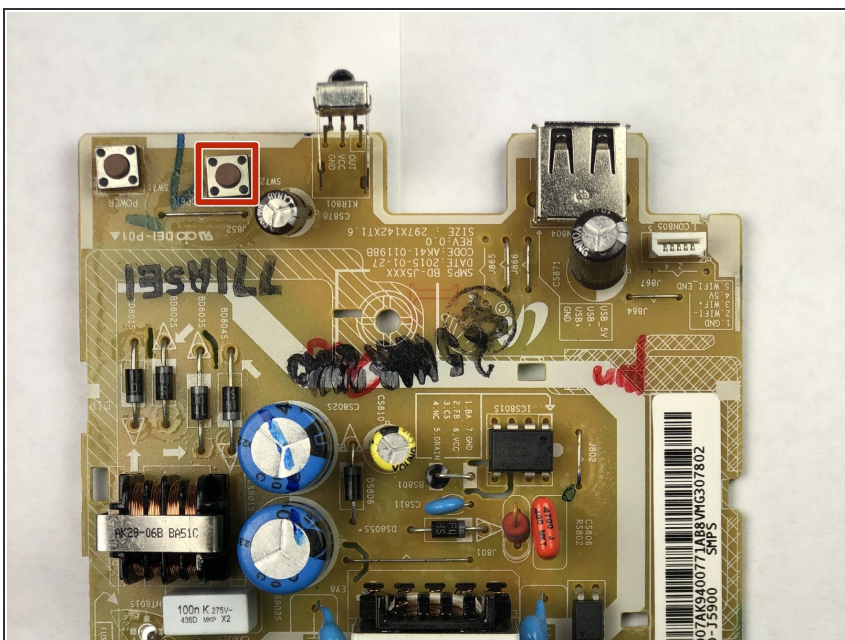
- Use the Phillips #00 screwdriver to remove the 9.7mm screw holding the HDMI port in place on the outside of the case.

## Step 11



- Use the Phillips #00 screwdriver to remove the 6.4mm screw holding the motherboard in place.
- Pull the motherboard up to remove it from the device.

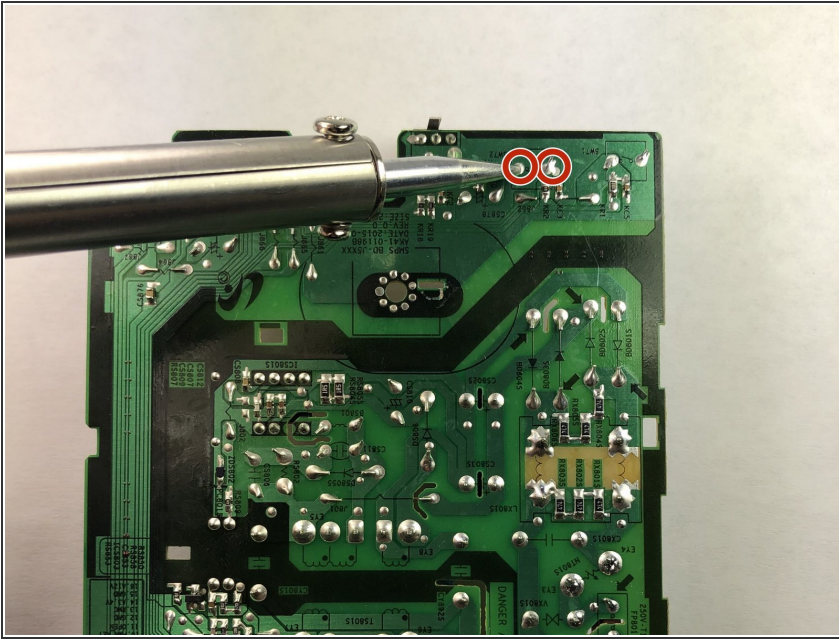
## Step 12 — Open Button



- Locate the Open Button on the circuit board.



## Step 13



- Flip the motherboard over so that the green side is facing you.
- Use a soldering iron to desolder the two points to disconnect the open button.
- ① For more information on soldering, please read the [How To Solder and Desolder Connections](#) guide.

To reassemble your device, follow these instructions in reverse order.