



# Samsung BD-JM57C Wi-Fi Card Replacement

Use this guide to remove the Wi-Fi card in your Samsung BD-JM57C blu-ray player.

Written By: Abby Hudson



## INTRODUCTION

This guide will allow you to replace a faulty WiFi card. The WiFi card is the component on the Blu-Ray player that establishes and maintains internet connectivity. Connectivity issues such as slow streaming, degraded video quality, and dropped signals can all be fixed through a replacement of the WiFi card. Try troubleshooting your problem before using this guide.

Make sure the device is not plugged in before working on it.



### TOOLS:

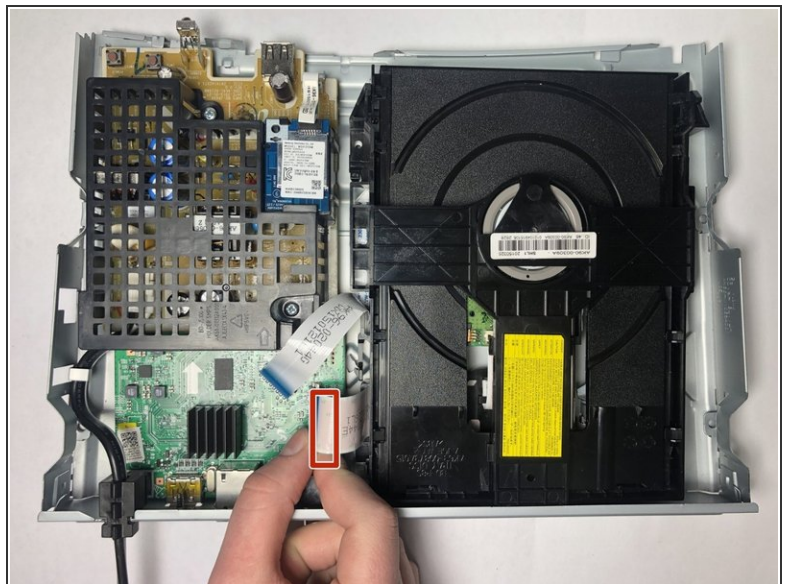
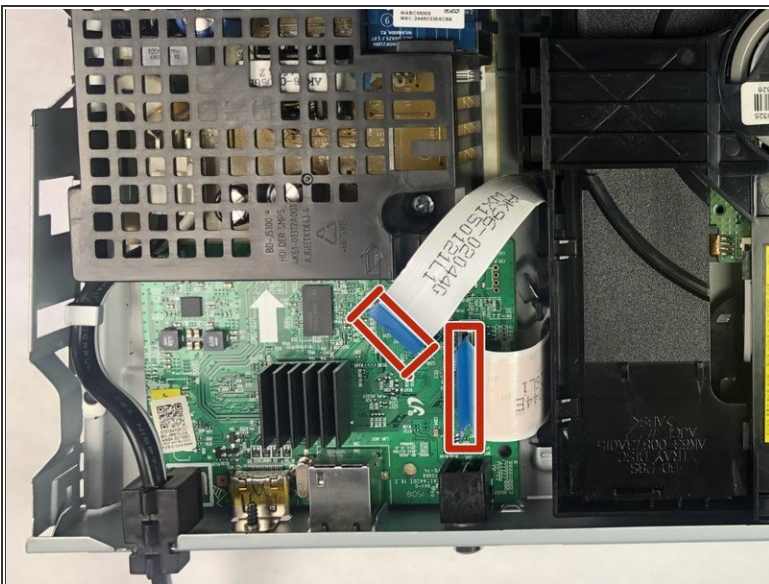
- [Phillips #00 Screwdriver](#) (1)

## Step 1 — Top Cover



- Use the Phillips #00 Screwdriver to remove the single 9.6mm screw holding the top cover in place.
- Remove the cover by sliding it up and then out.

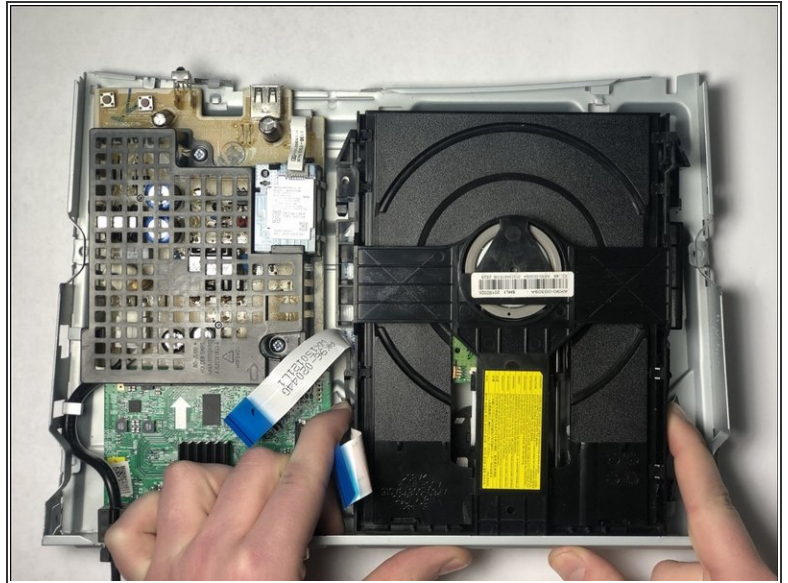
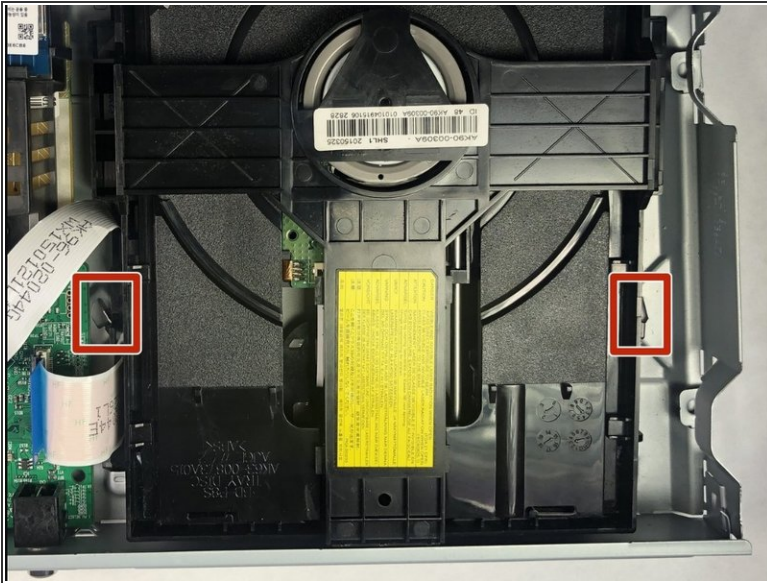
## Step 2 — Disc Drive



- Disconnect the two ribbons that connect the disc drive to the motherboard.

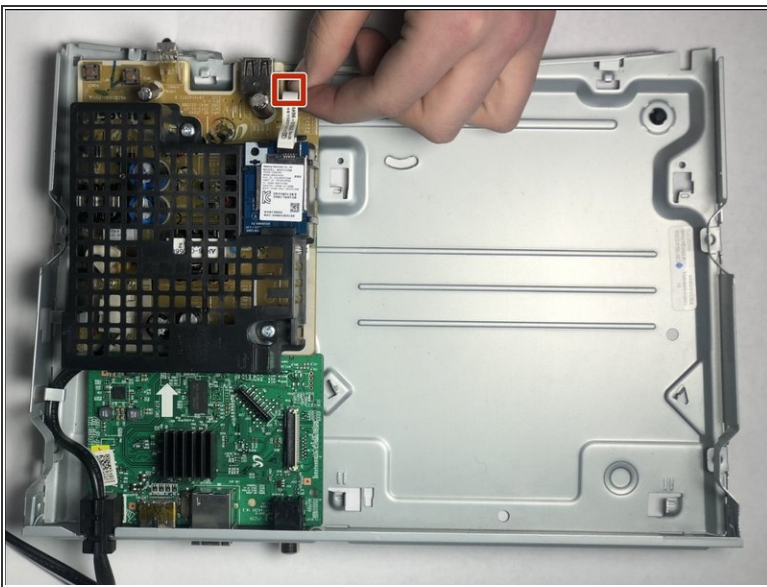


## Step 3



- Push in on the two metal tabs on the side of the disc drive.
- Push forward to slide the disc drive out of the casing.

## Step 4 — WiFi Card



- Pull clip to remove the WiFi card ribbon connected to the circuit board.
- Push the black plastic tab out and slide the WiFi card out from the cage.

To reassemble your device, follow these instructions in reverse order.