



Samsung BD-JM57C Power Cord Replacement

Use this guide to remove the power cord in your Samsung BD-JM57C blu-ray player.

Written By: Abby Hudson



INTRODUCTION

If you have gone through the troubleshooting guide, and have determined that the reason your device is not able to power on is in fact a faulty power cord then you can replace it for a new undamaged one with the help of this simple, easy to follow guide.

Make sure the device is not plugged in before working on it.



TOOLS:

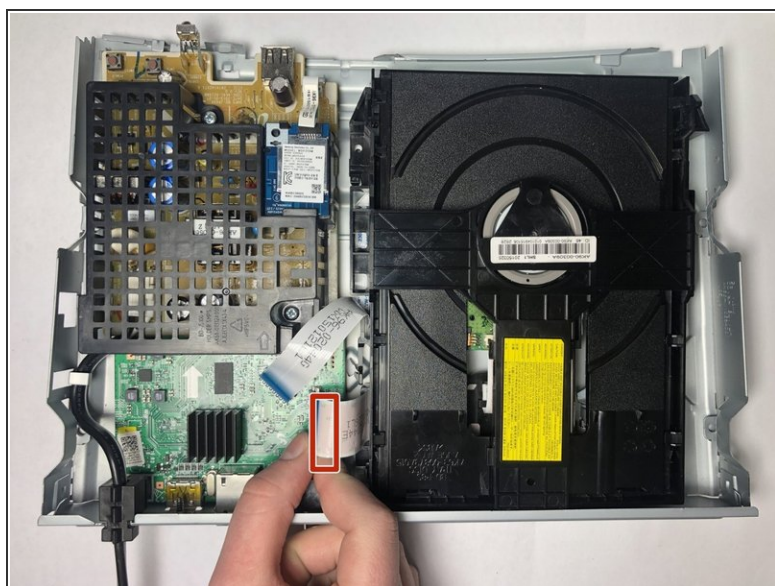
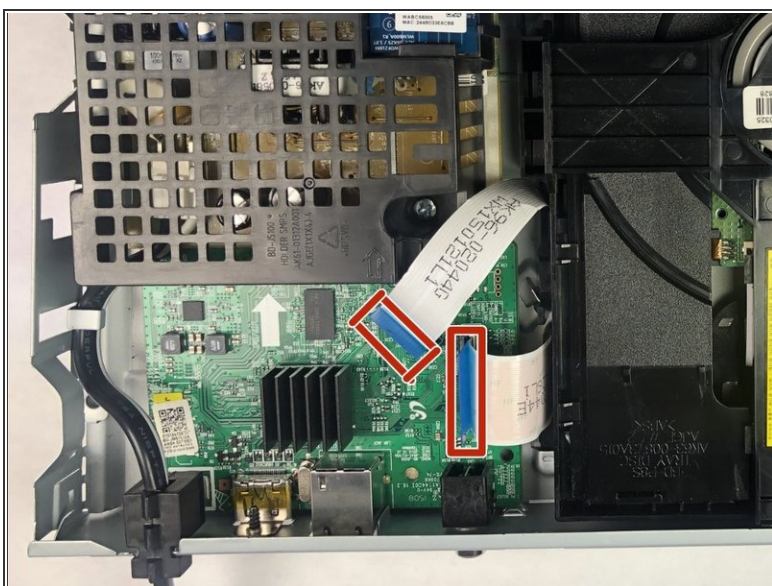
- [Phillips #00 Screwdriver](#) (1)
-

Step 1 — Top Cover



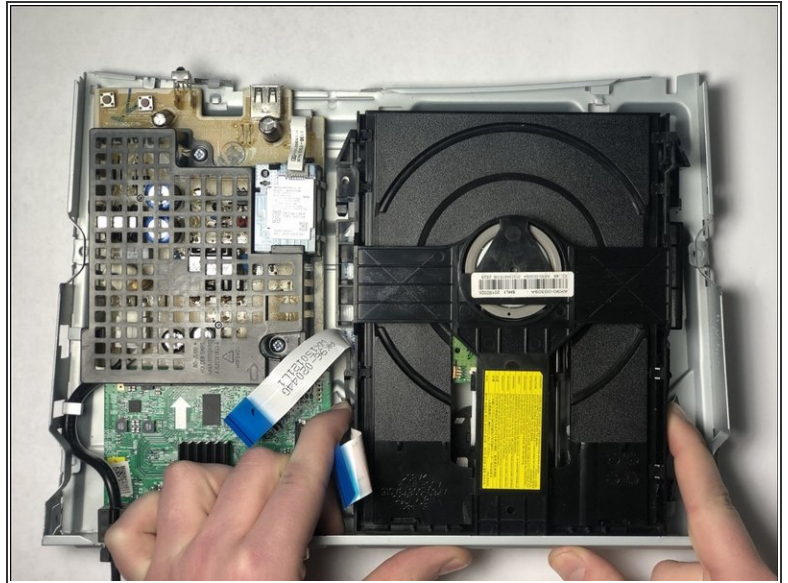
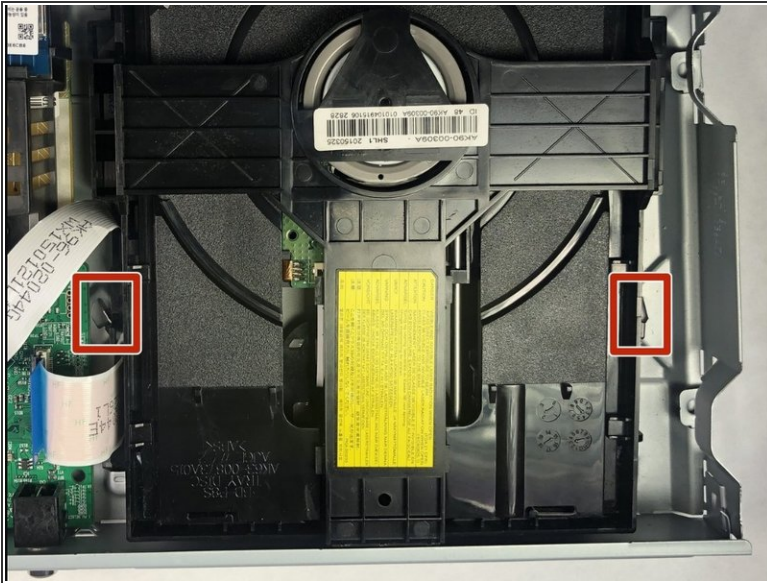
- Use the Phillips #00 Screwdriver to remove the single 9.6mm screw holding the top cover in place.
- Remove the cover by sliding it up and then out.

Step 2 — Disc Drive



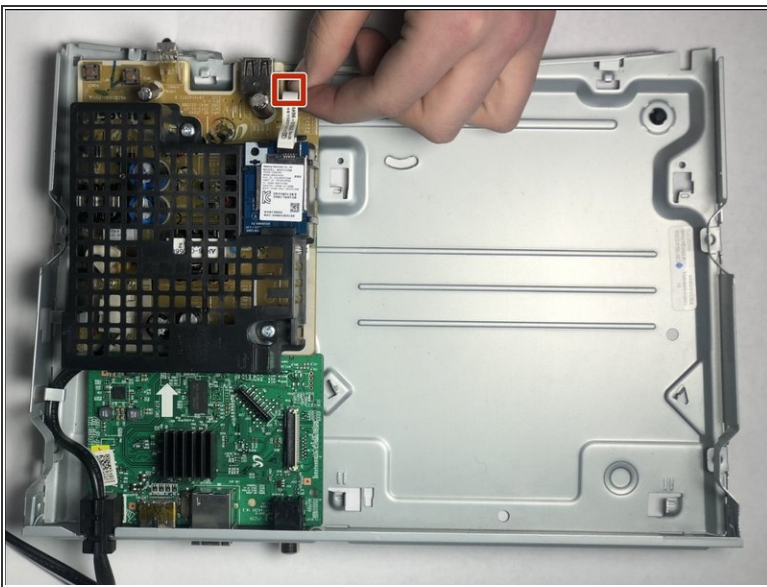
- Disconnect the two ribbons that connect the disc drive to the motherboard.

Step 3



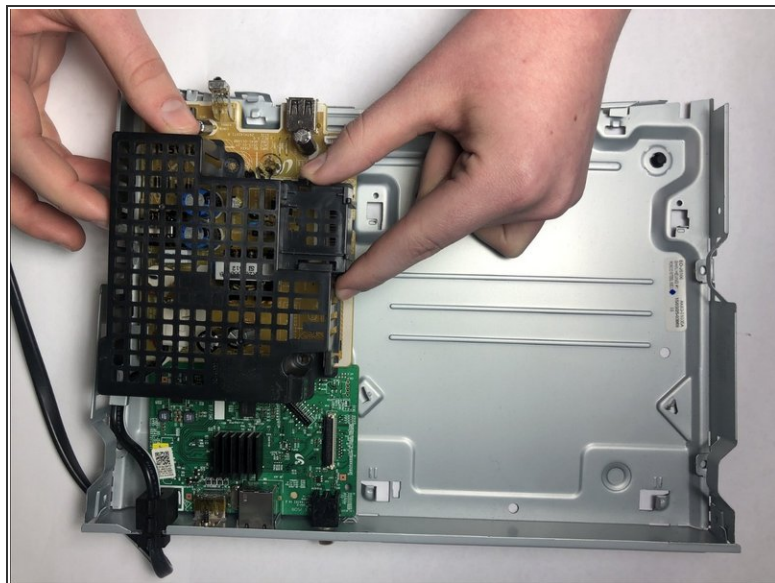
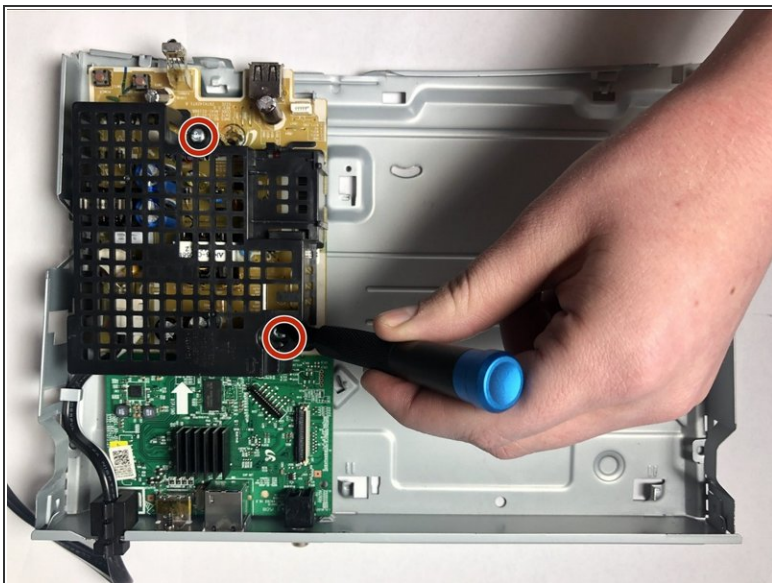
- Push in on the two metal tabs on the side of the disc drive.
- Push forward to slide the disc drive out of the casing.

Step 4 — WiFi Card



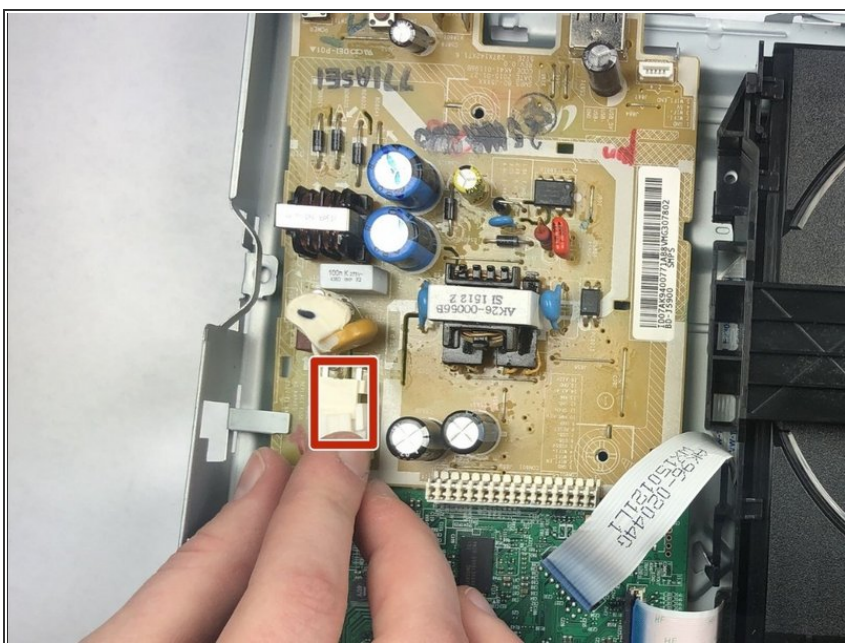
- Pull clip to remove the WiFi card ribbon connected to the circuit board.
- Push the black plastic tab out and slide the WiFi card out from the cage.

Step 5 — Power Cord



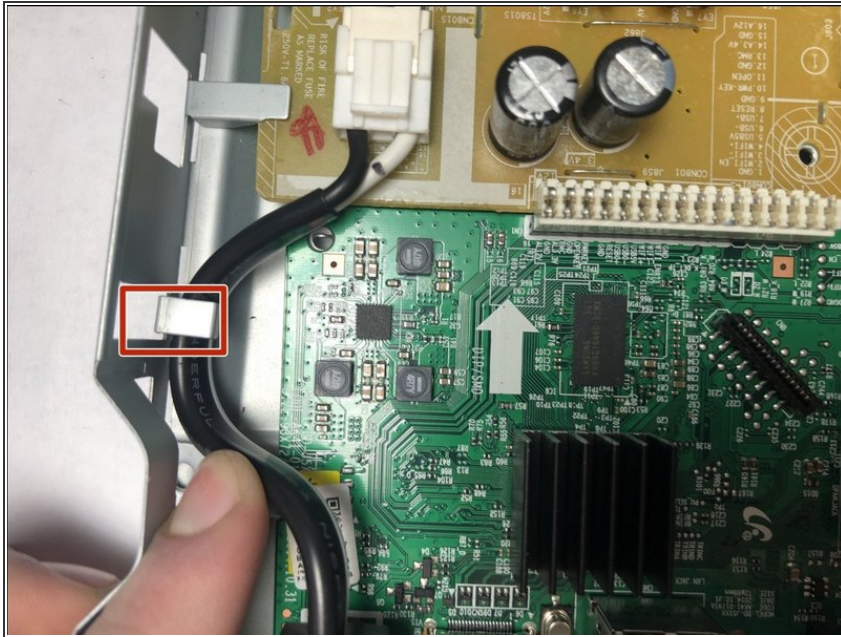
- Use the Phillips #00 Screwdriver to remove the two 6.4 mm screws holding the cage in place.
- Lift the cage up to remove it.

Step 6



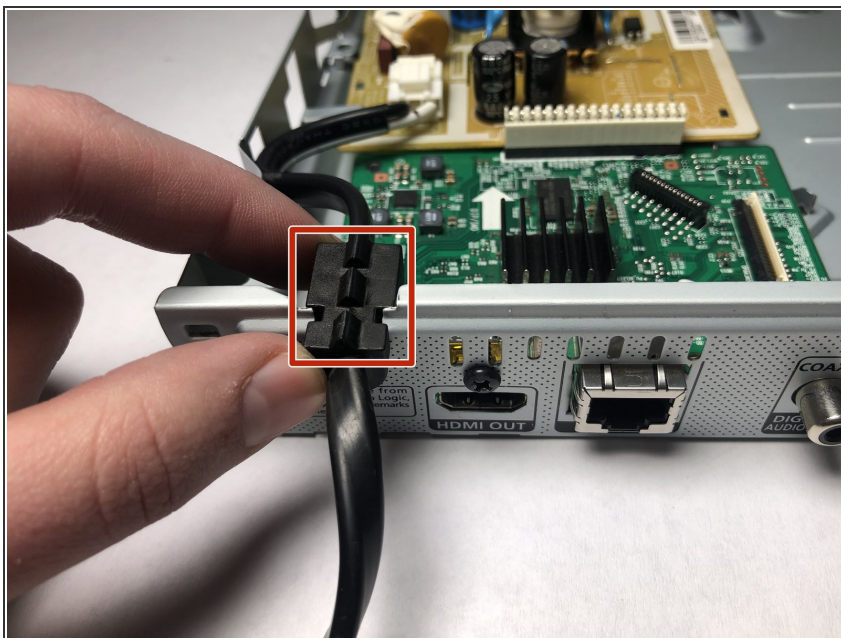
- Push in the small white lever and pull it towards you to release the cord.

Step 7



- Move the power cord out from under the metal tab on the side of the case.

Step 8



- Remove the rubber spacer on the edge of the case holding the cord in place.
- Remove the power cord from the device.

To reassemble your device, follow these instructions in reverse order.