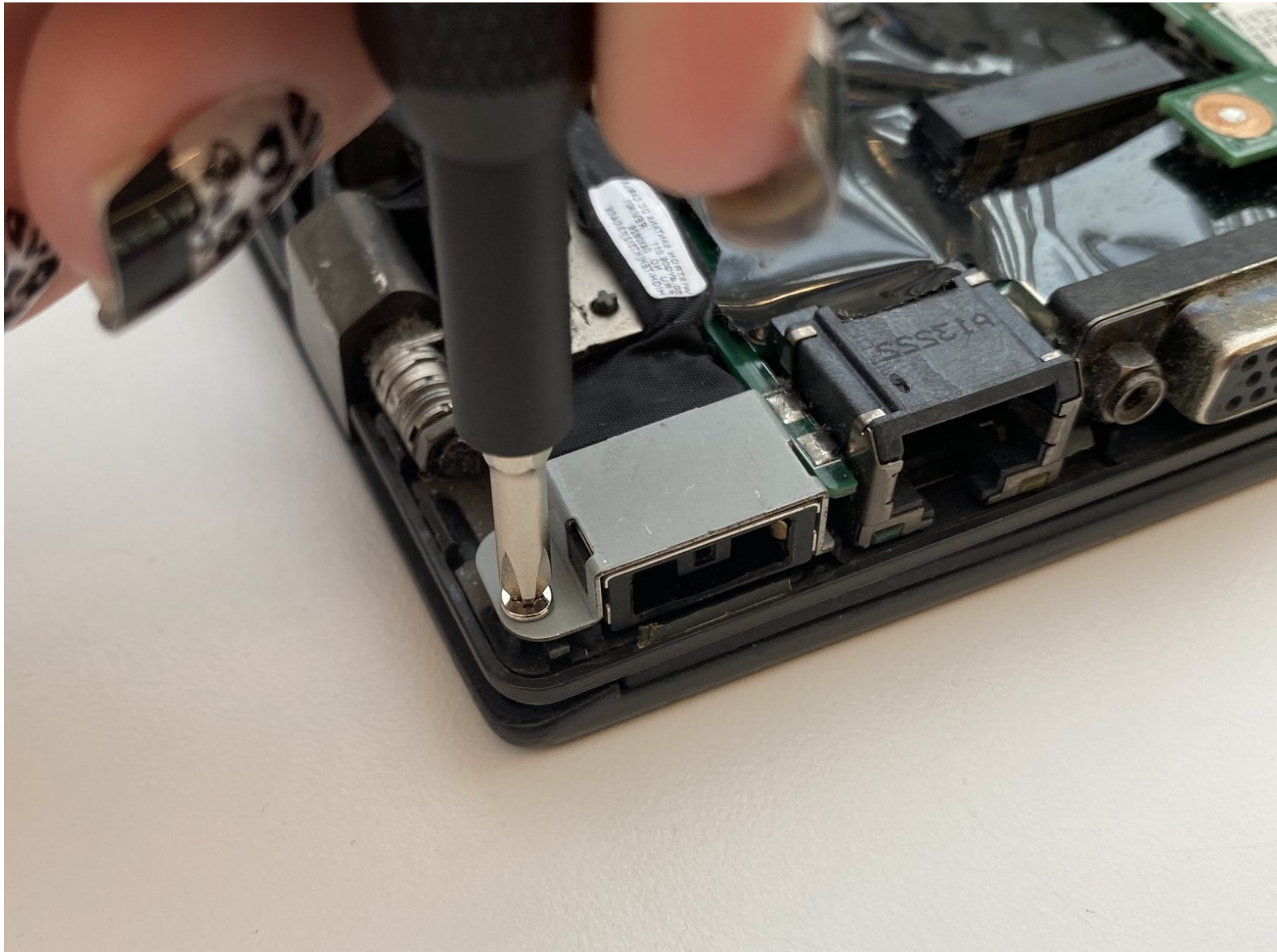




Lenovo ThinkPad T431S Charging Port Replacement

This guide will show you how to locate and replace the Lenovo T431s charging port.

Written By: Christine Portanova



INTRODUCTION

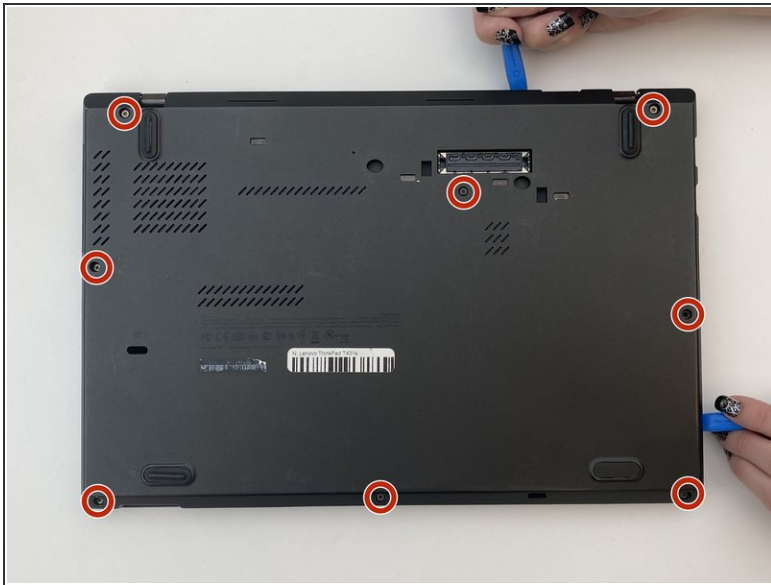
This guide will show you how to locate and replace the Lenovo T431s charging port. The charging port is crucial for charging your computer's battery. If you are experiencing charging problems, loose port, or unresponsiveness, then you may need to replace your charging port.




TOOLS:

- [iFixit Opening Tools](#) (1)
 - [Phillips #1 Screwdriver](#) (1)
-

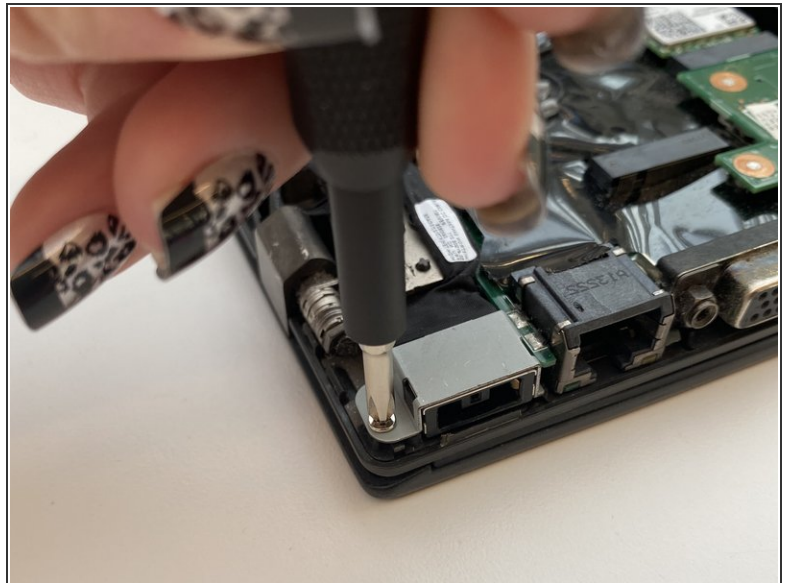
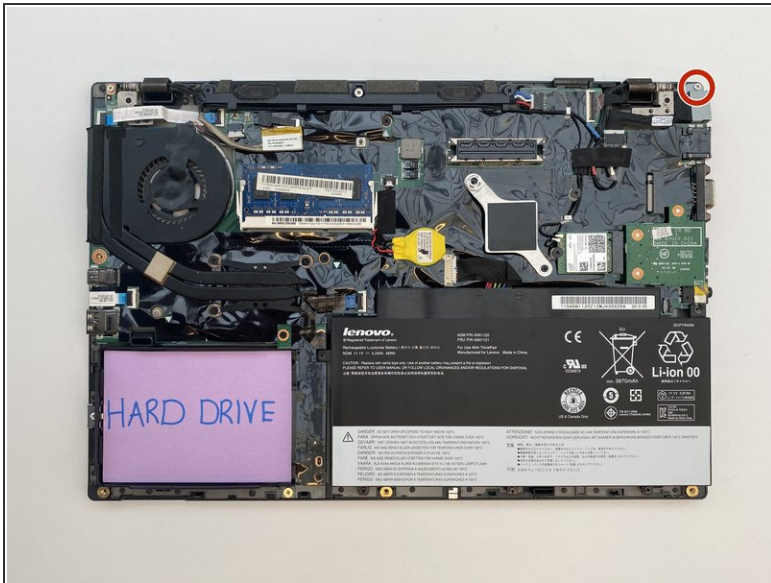
Step 1 — Charging Port



 Remember before starting any disassembly, to prevent electric shock or harm, disconnect from any external power source and make sure device is powered off.

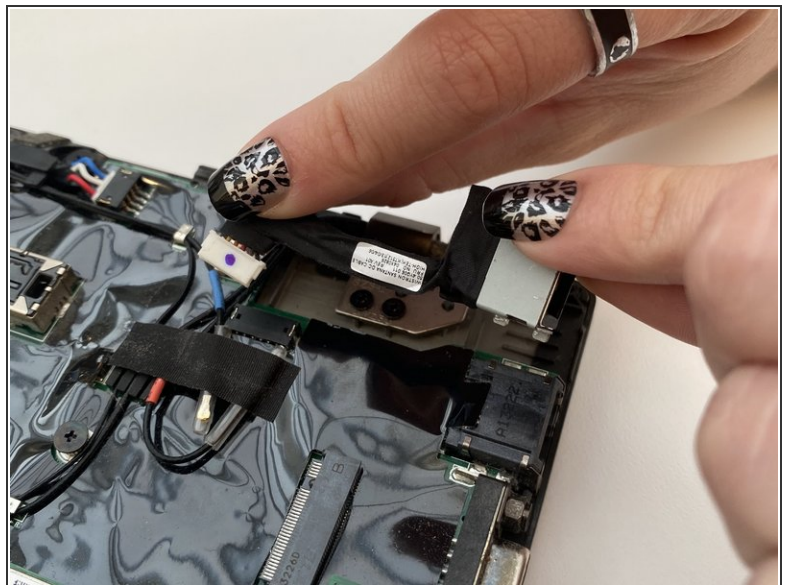
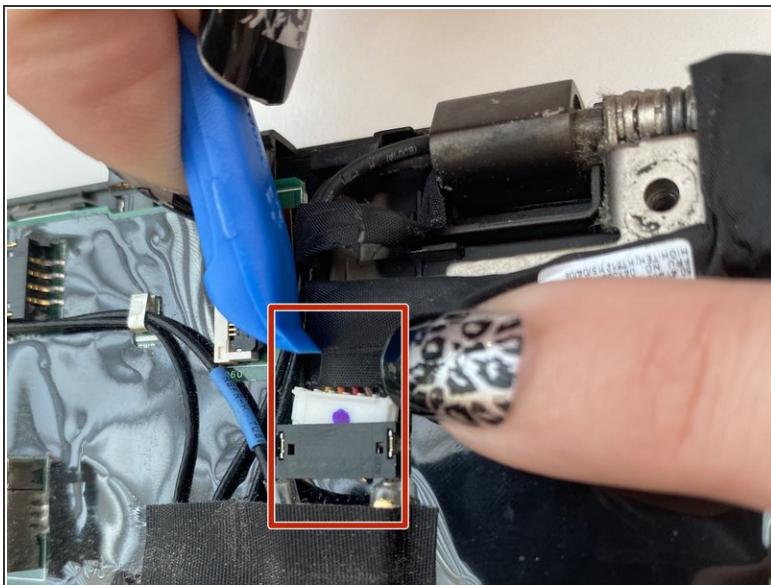
- Use a Phillips #1 screwdriver bit to remove eight 5.0 mm screws from the back panel.
- After loosening the screws, use the three opening tools to take the back panel off of the rest of the device.

Step 2



- Unscrew the single, 3.0 mm screw with a Phillips #1 screwdriver bit that holds the charging port housing into place.

Step 3



- Remove the small, white connector cable by prying it from the connector with a plastic opening tool.
- Remove the charging port assembly.

This document was generated on 2020-11-28 07:58:06 AM (MST).

To reassemble your device, follow these instructions in reverse order.