



iRobot Braava Jet 240 Front Shell Replacement

Use this guide to replace the front shell on your iRobot Braava Jet 240, model number: B240020.

Written By: Claire Franz



INTRODUCTION

The front shell of the iRobot Braava Jet 240 covers all of the device's circuitry as well as the nozzle. Therefore, to replace the nozzle, the front shell must first be removed. Follow this guide to remove the front shell.



TOOLS:

- [Phillips #1 Screwdriver](#) (1)
 - [iFixit Opening Tools](#) (1)
-

Step 1 — Battery



- Turn the device off.

Step 2



- Use your fingers to gently pop out the battery.

Step 3 — Mop Pad



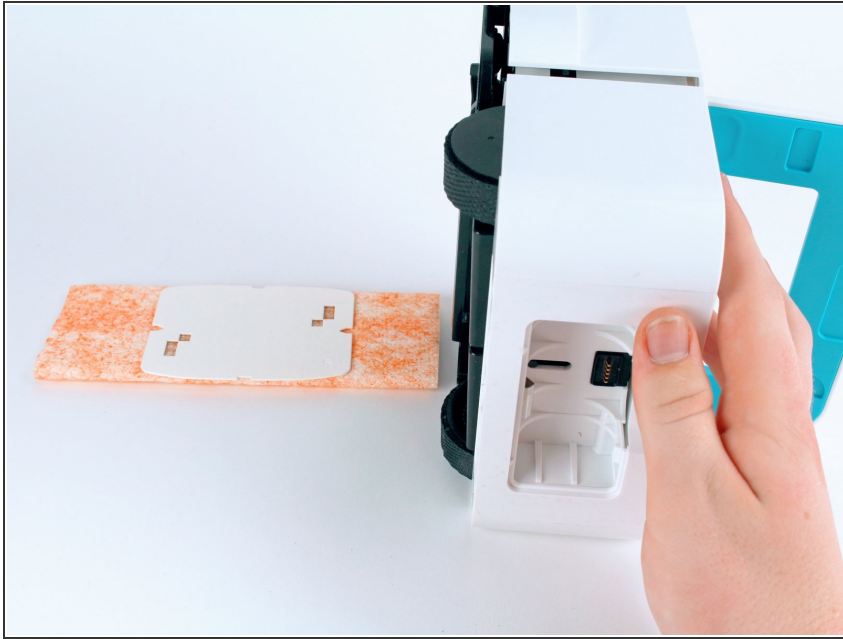
- Lift up the handle to reveal the eject button.

Step 4



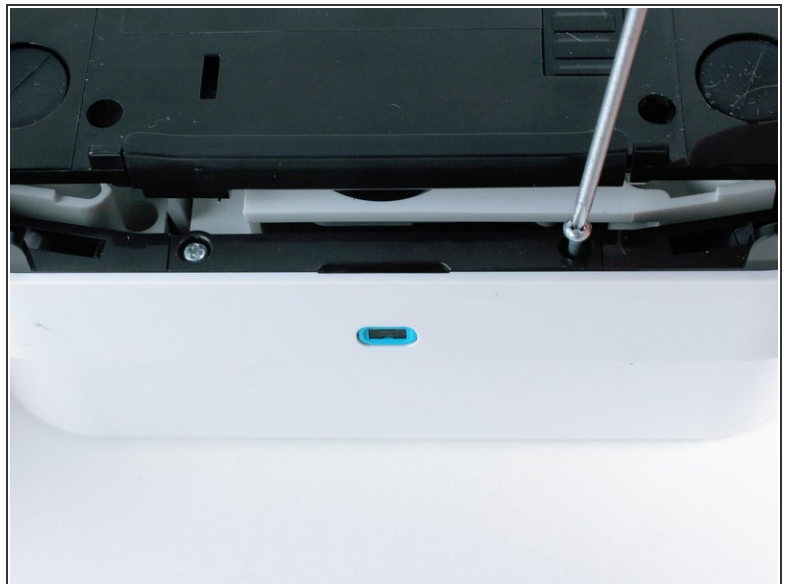
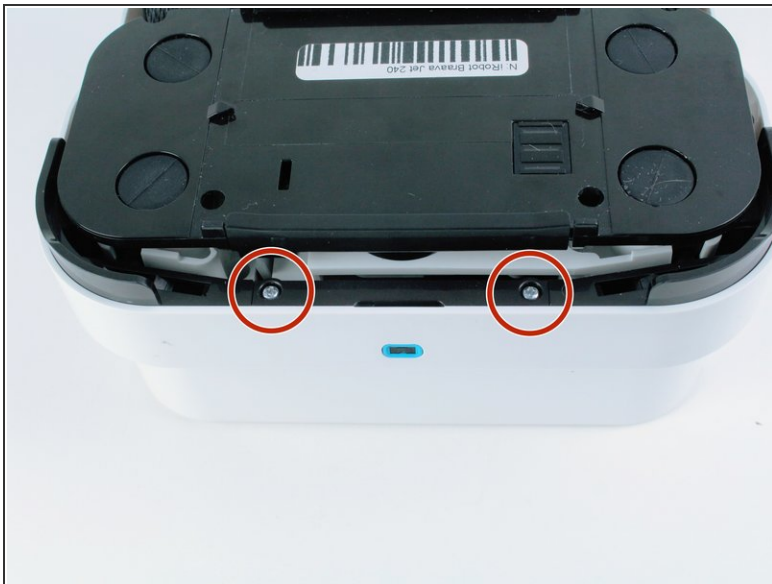
- Use your finger to push the eject button forward.

Step 5



- Tilt the robot on its side and let the mop pad slide out.

Step 6 — Front Shell



- Remove the two 22.0 mm screws on the bottom-front of the robot using a Phillips #1 screwdriver.

Step 7



- Use a Phillips #1 screwdriver and an iFixit opening tool to remove the two 15.0 mm screws on the front sides of the robot.

Step 8



- Carefully pull back on the front shell to remove it from the robot.

To reassemble your device, follow these instructions in reverse order.