



iRobot Braava Jet 240 Nozzle Replacement

Use this guide to replace the nozzle on your iRobot Braava Jet 240, model number: B240020.

Written By: Claire Franz



INTRODUCTION

If the nozzle of your Braava Jet 240 is faulty, use this guide to replace it. You will only need a Phillips #1 screwdriver.

The nozzle is used to spray water onto the ground for the robot to mop up. Sometimes debris can get into the nozzle and cause it to spray in an abnormal pattern, or not at all. If this happens, it will need to be replaced.



TOOLS:

- [Phillips #1 Screwdriver](#) (1)
 - [iFixit Opening Tools](#) (1)
-

Step 1 — Battery



- Turn the device off.

Step 2



- Use your fingers to gently pop out the battery.

Step 3 — Mop Pad



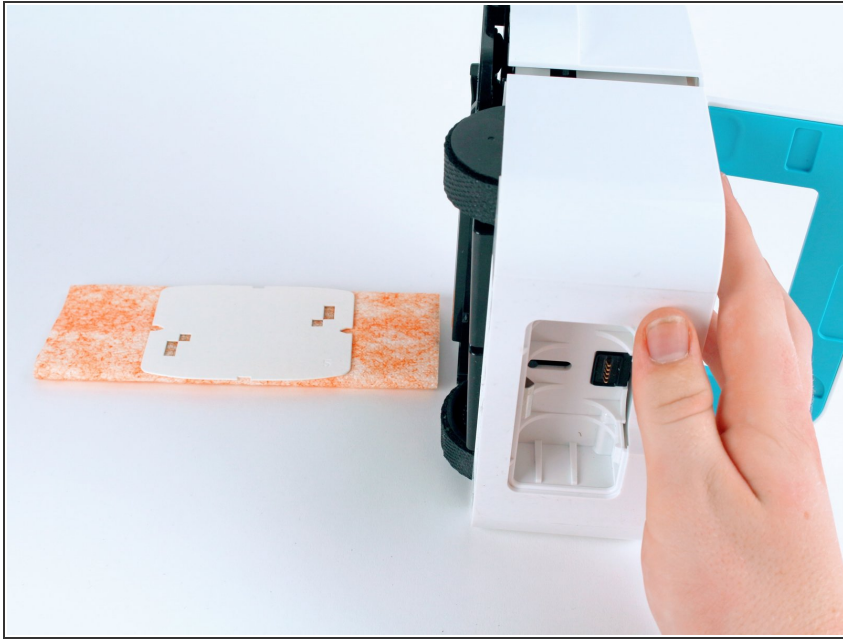
- Lift up the handle to reveal the eject button.

Step 4



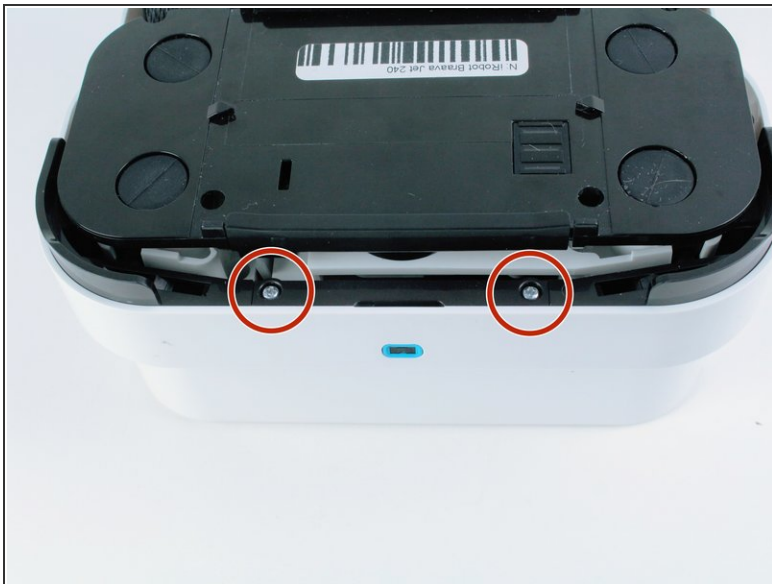
- Use your finger to push the eject button forward.

Step 5



- Tilt the robot on its side and let the mop pad slide out.

Step 6 — Front Shell



- Remove the two 22.0 mm screws on the bottom-front of the robot using a Phillips #1 screwdriver.

Step 7



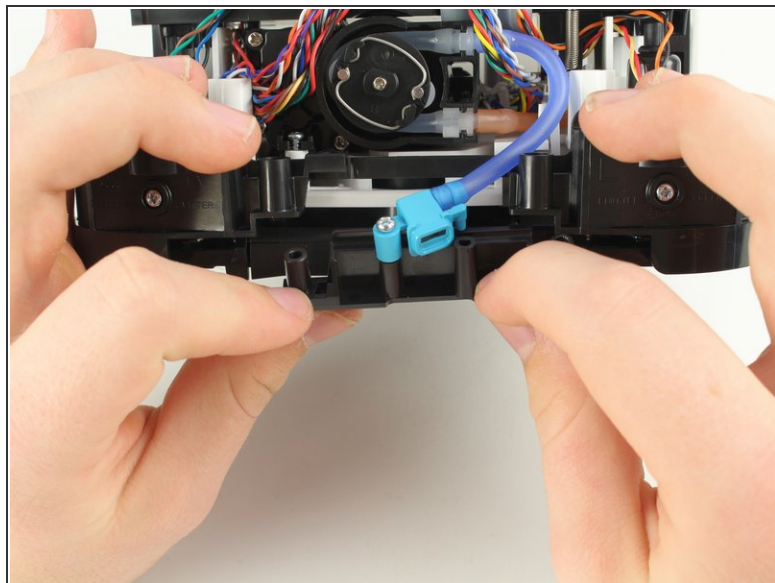
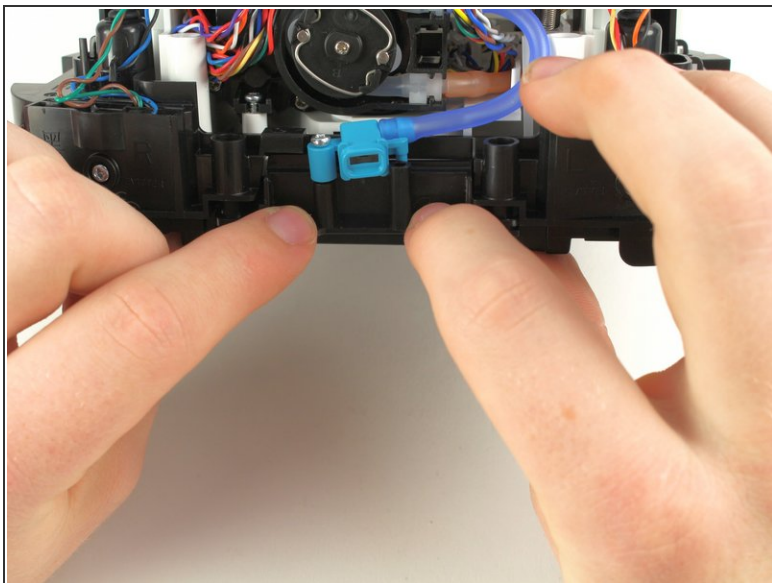
- Use a Phillips #1 screwdriver and an iFixit opening tool to remove the two 15.0 mm screws on the front sides of the robot.

Step 8



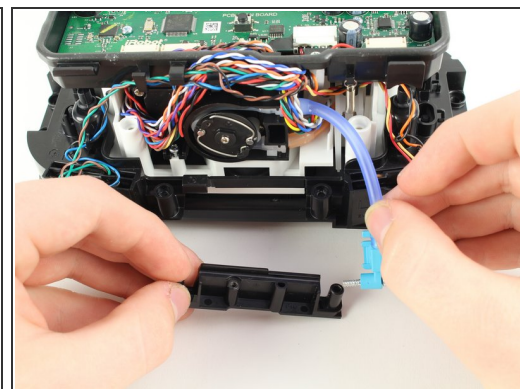
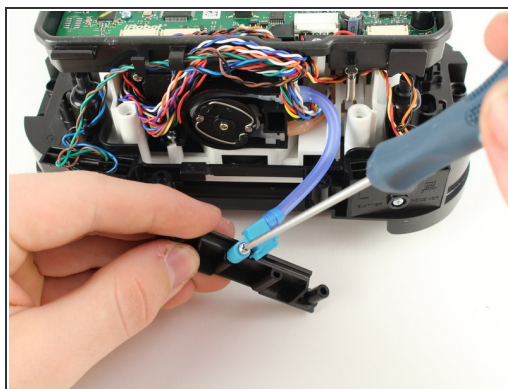
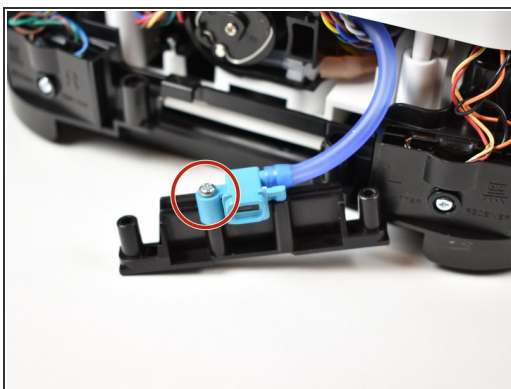
- Carefully pull back on the front shell to remove it from the robot.

Step 9 — Nozzle



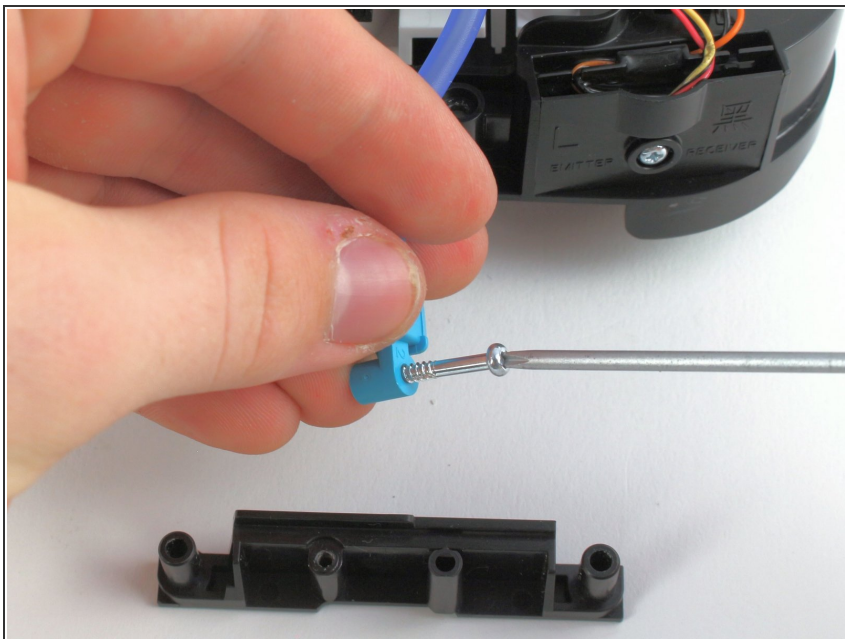
- Pull the nozzle assembly away from the body of the robot.

Step 10



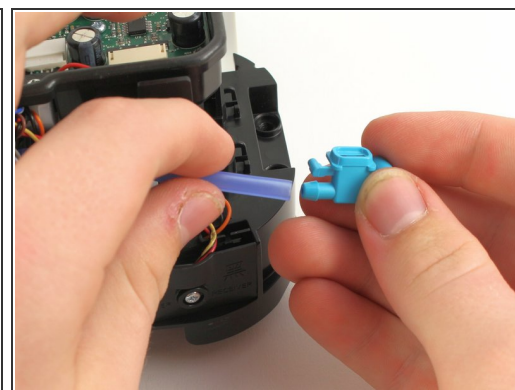
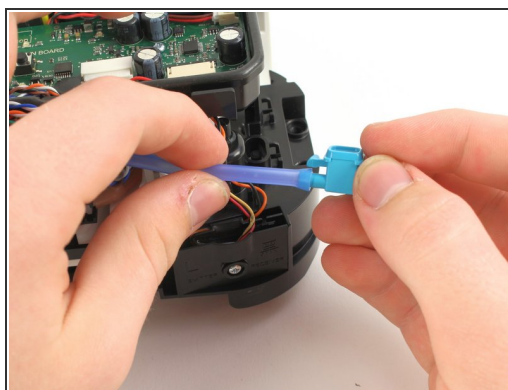
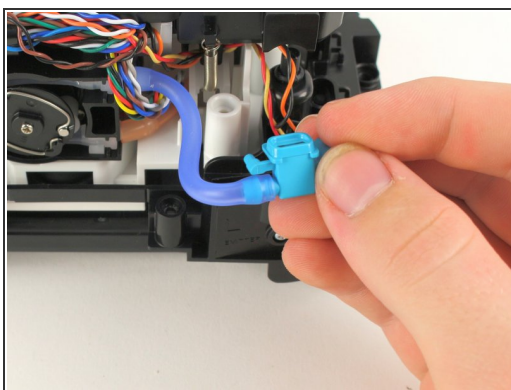
- Using a Phillips #1 screwdriver, remove the 16 mm screw that holds the nozzle in place.

Step 11



- Continue unscrewing the 16 mm screw until it comes out of the nozzle.

Step 12



- Gently remove the tube from the nozzle.

To reassemble your device, follow these instructions in reverse order.