



ASUS ROG Strix GL503VD-DB71 SSD Replacement

If your ASUS ROG Strix GL503VD-DB71 laptop's...

Written By: Bryce Davis



INTRODUCTION

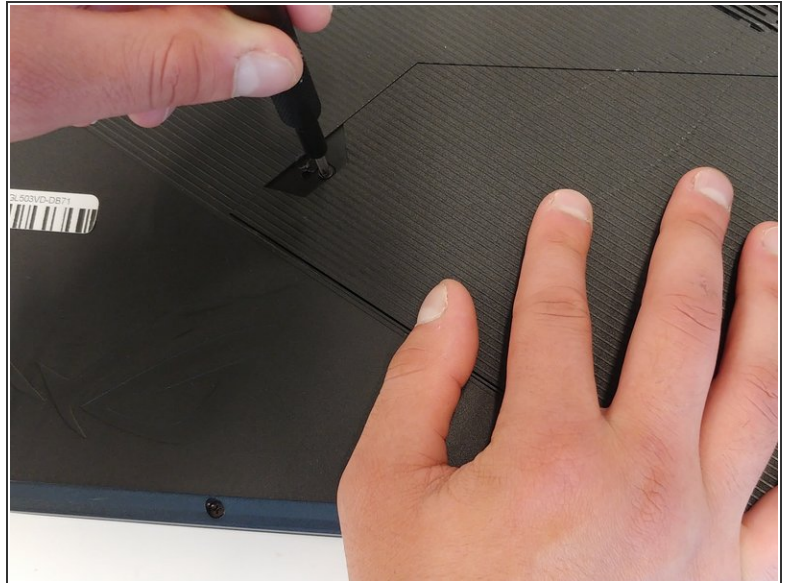
If your ASUS ROG Strix GL503VD-DB71 laptop's storage becomes full or is running slow due to you having a lot of files on your laptop, this guide will help you solve that by adding an SSD to the laptop. An SSD is a solid-state drive, which acts as an extra storage drive you can attach to your laptop. The SSD uses integrated circuit assemblies to store data for your laptop. You may have to add or replace an SSD if you run out of storage or your laptop becomes slow due to the storage being full. Before beginning, make sure to power off laptop completely and disconnect from any external power source.



TOOLS:

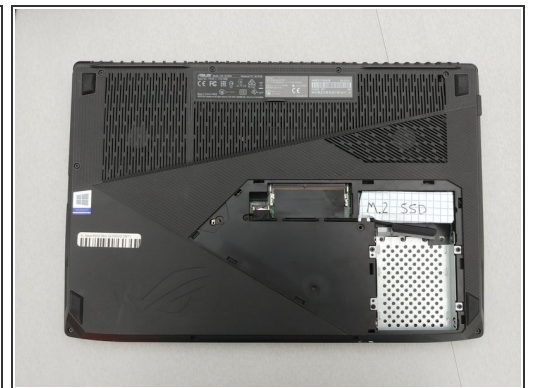
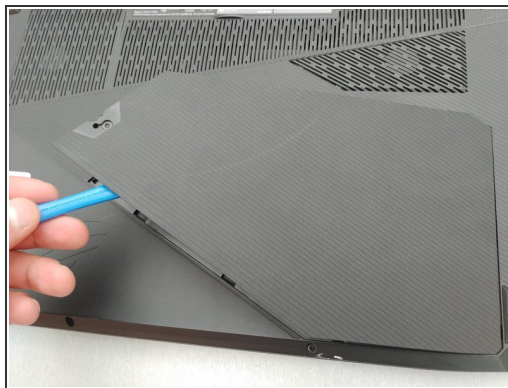
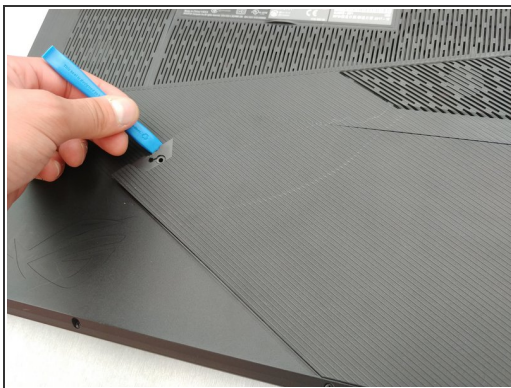
- [Phillips #0 Screwdriver](#) (1)
 - [iFixit Opening Tool](#) (1)
-

Step 1 — SSD



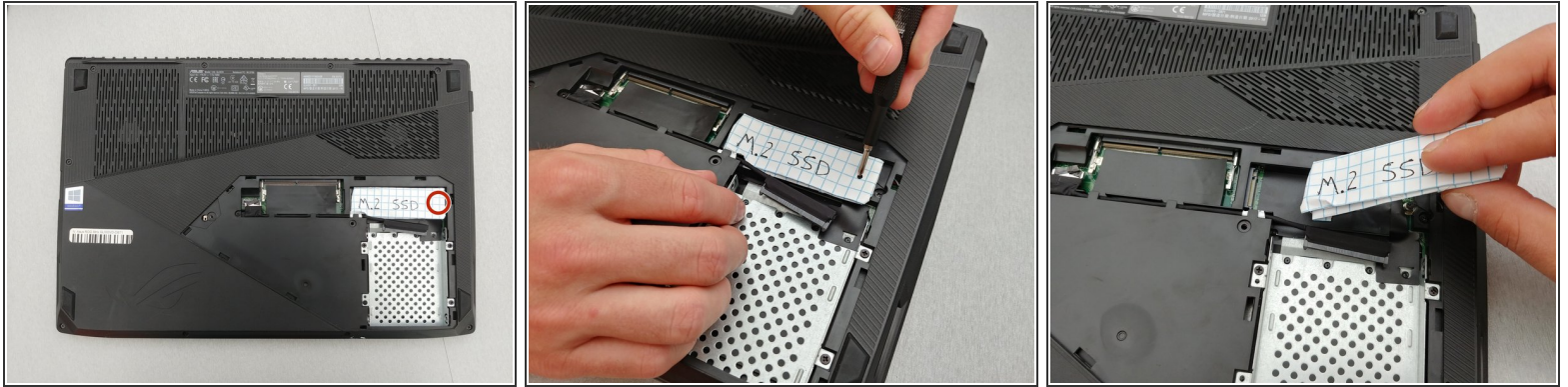
- Flip the laptop over to the back cover.
- Using a Phillips #0 screwdriver, unscrew the single 2 mm screw holding the hard drive cover.

Step 2



- Pry up the service panel using a plastic opening tool.
- Remove the panel.

Step 3



- Unscrew the single screw holding the SSD using a Phillips #0 screwdriver.
- Unplug and remove the SSD.

To reassemble your device, follow these instructions in reverse order.