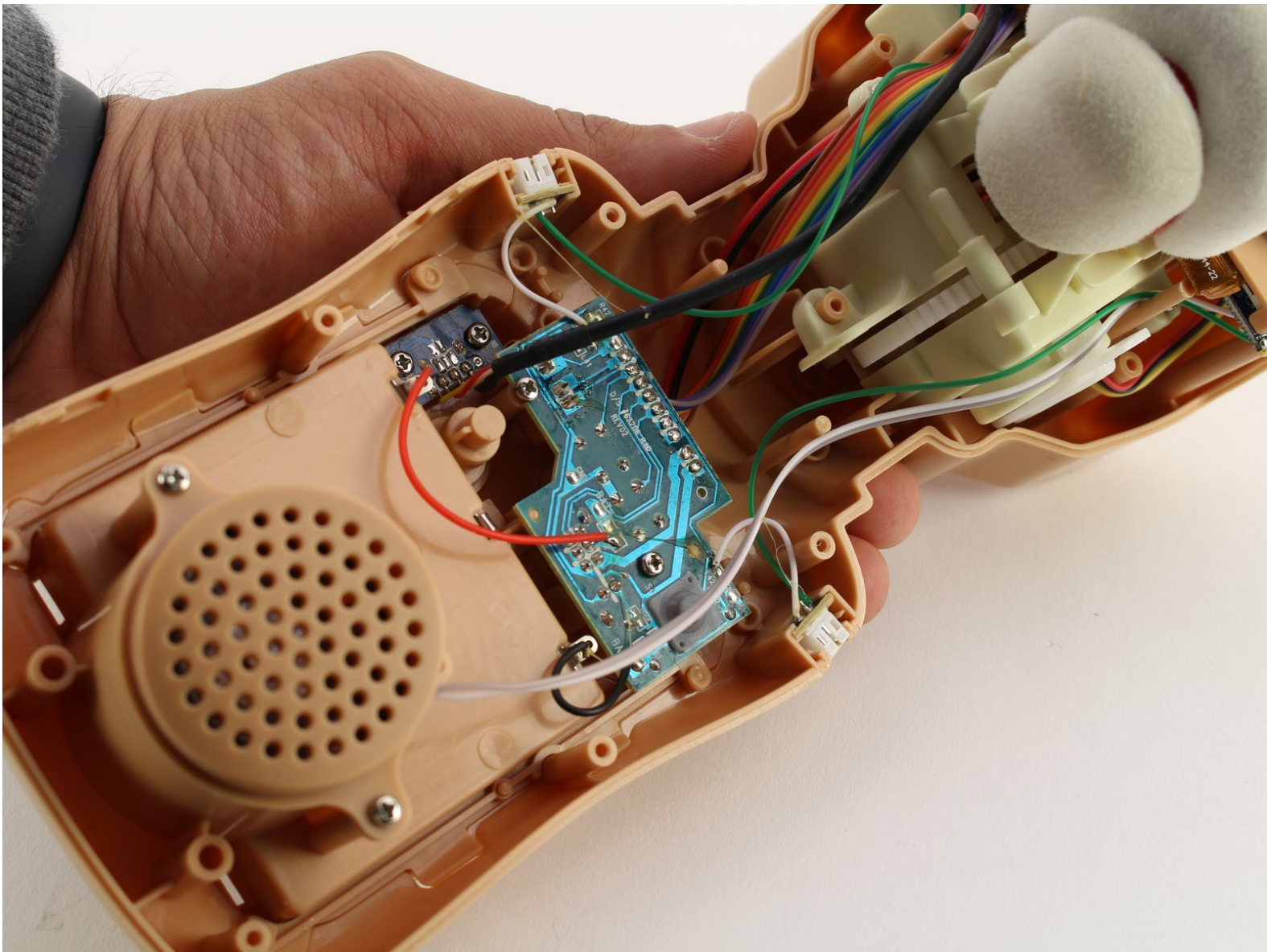




Teddy Ruxpin Motherboard Replacement

Many of the Teddy Ruxpin's parts are all...

Written By: Jayin Patel



INTRODUCTION

Many of the Teddy Ruxpin's parts are all controlled by the main motherboard. If an issue with your bear boils down to more than just a replaceable part, it may be time to replace the motherboard. Desoldering is required, so be sure to refer to the [desoldering guide](#). You will also need to use a Phillips #1 screwdriver to access the motherboard.



TOOLS:

- [Phillips #1 Screwdriver](#) (1)
- [Soldering paste](#) (1)
- [Desoldering Braid](#) (1)
- [Lead-Free Solder](#) (1)
- [Soldering Workstation](#) (1)
- [Staples](#) (1)
- [Utility Scissors](#) (1)
- [Phillips #2 Screwdriver](#) (1)

Step 1 — Battery



- Remove the vest covering the back of the bear.
- Orient the bear with his back facing upwards and unscrew the single Phillips #2 screw.
- ⓘ Captured screws will stay in place, no need to worry about losing this one!

Step 2



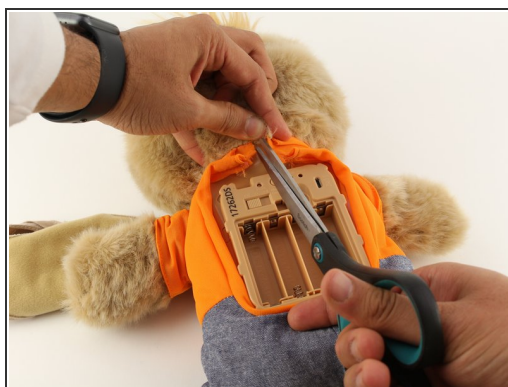
- Pull the tab outward to remove the protective plate for the batteries.

Step 3



- Remove all four AA batteries by pushing the positive end down and pulling the battery out toward yourself.

Step 4 — Arms



- Cut the orange shirt and zip tie.
- Remove the zip tie.

Step 5



- Cut across the back seam of the head of the bear along the arrow.

⚠ This damages the bear's exterior and will require resewing.

Step 6



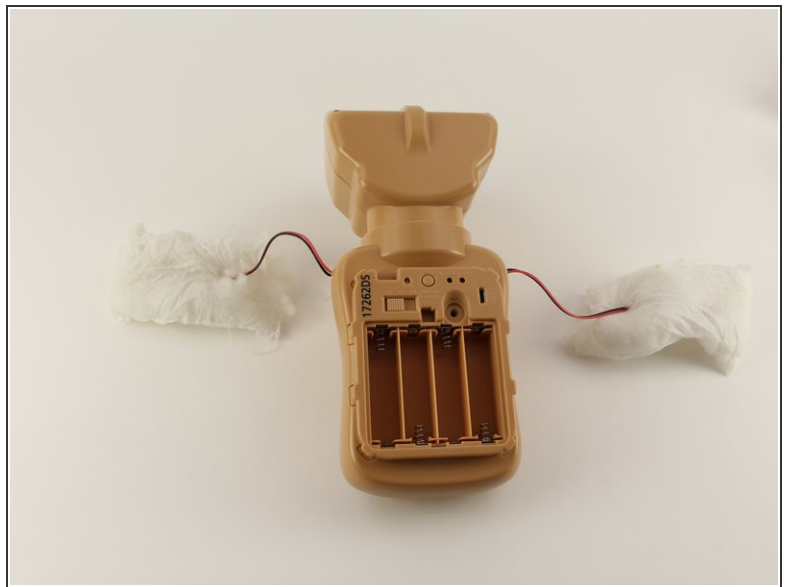
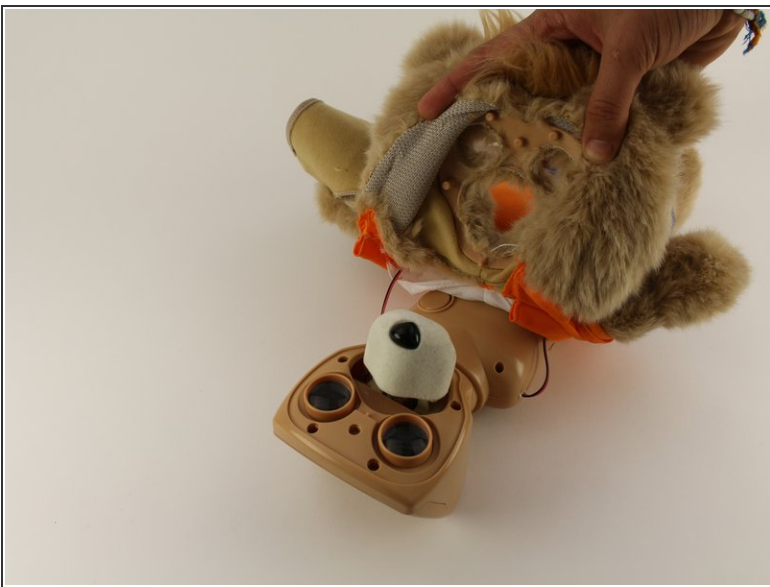
- Remove the interior of the doll.
 - Peel the outer layer around the head of the bear and forcefully pry off the face of the bear from the outside layer of the bear.
- i** This will be difficult and require significant force, but do not fear about breaking the doll at this stage.

Step 7



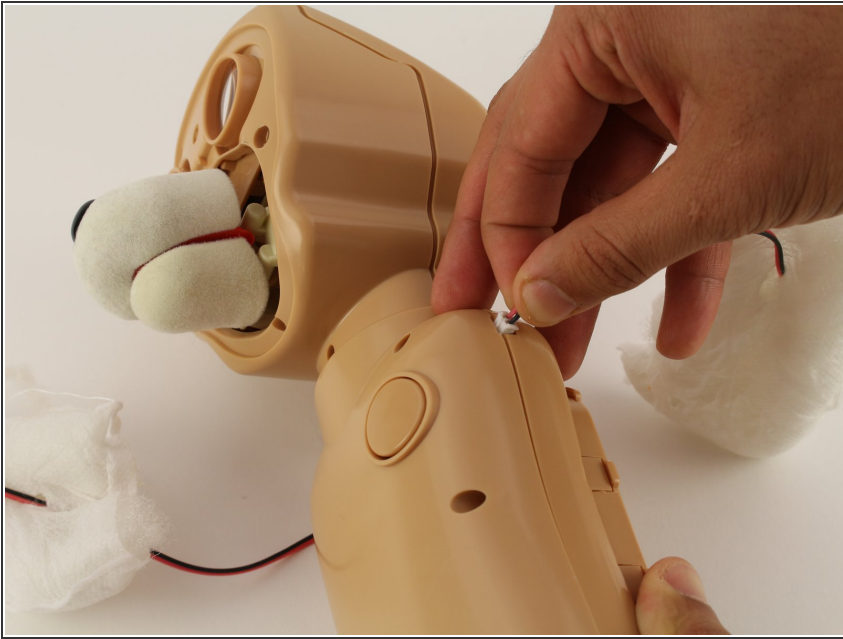
- Extract each arm button.
- ⓘ Pull on the stuffing of the bear and not the wire to remove the arm button.

Step 8



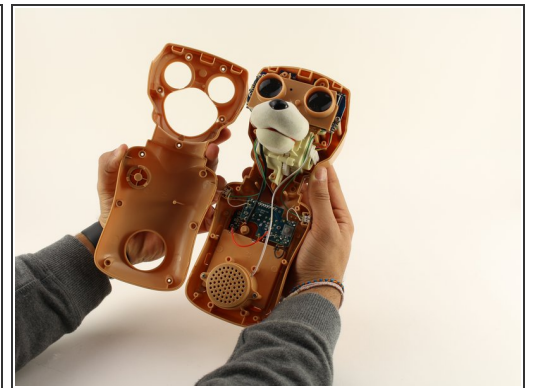
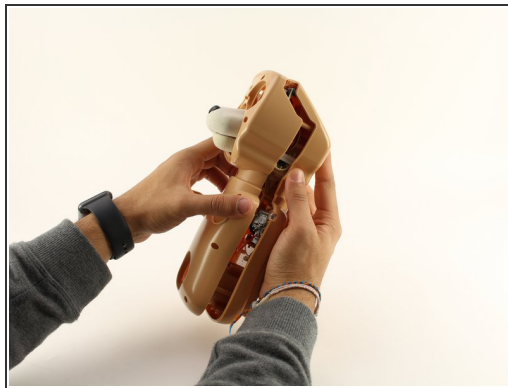
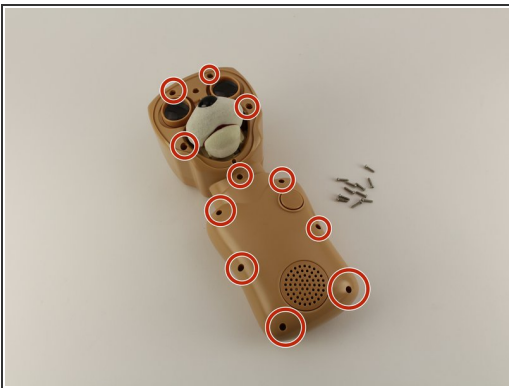
- Pull off the rest of the outside layer of the bear.

Step 9



- Unplug the arms from the main body.

Step 10 — Housing Cover



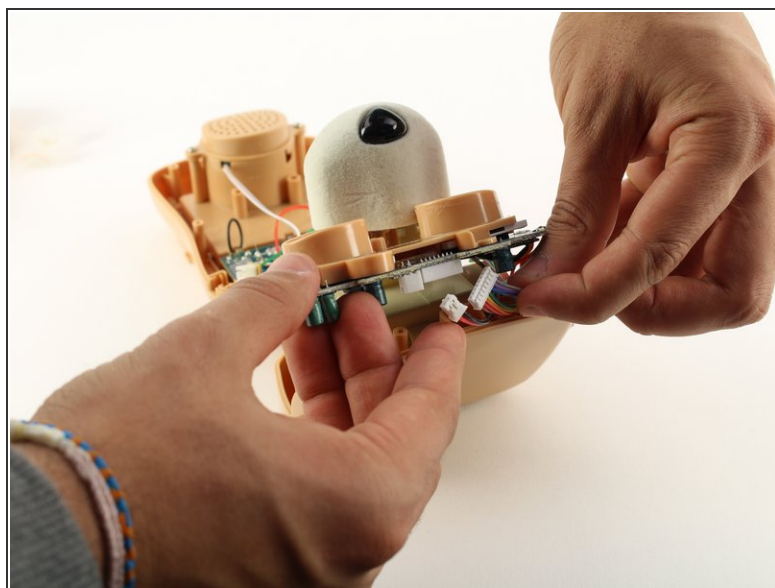
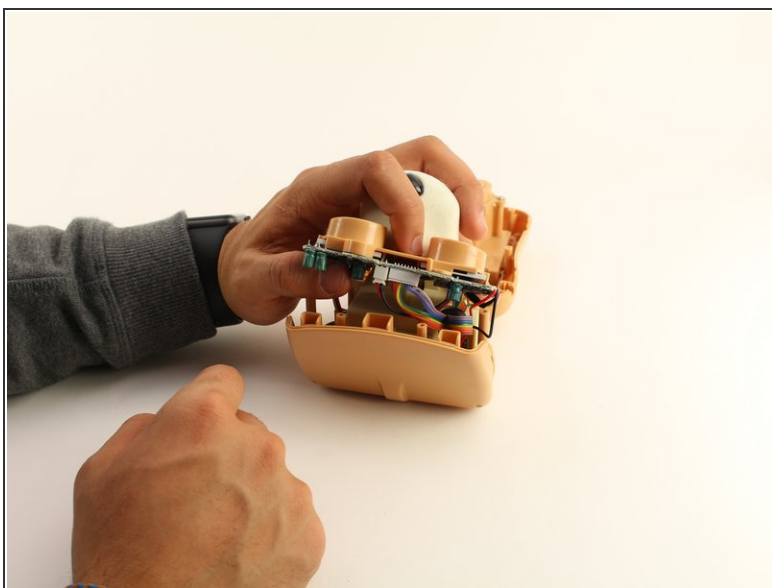
- Unscrew the eleven circled 12.5mm Phillips #1 screws.
- Remove the top of the housing to access the electronics inside.

Step 11 — Eyes



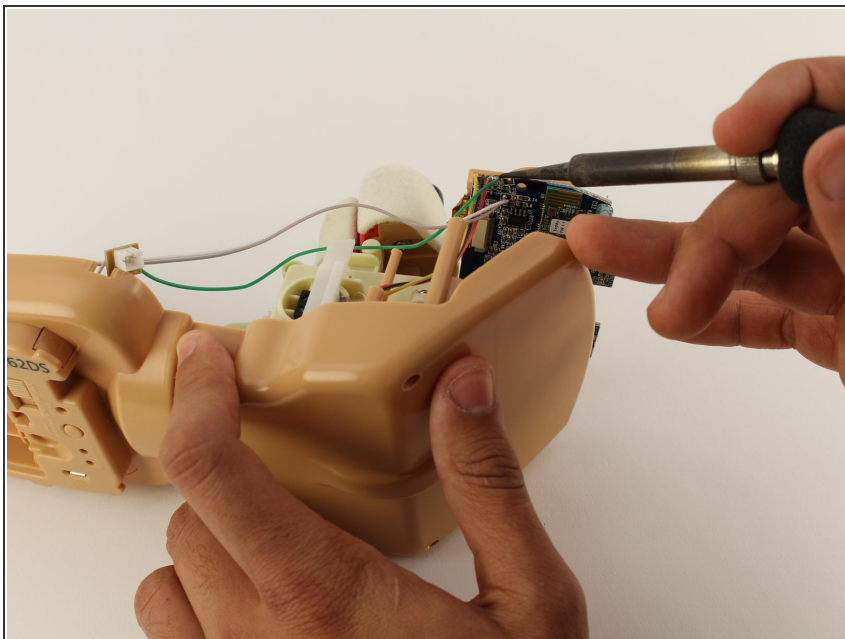
- Using a Phillips #1 screwdriver, remove the two 12.5mm screws connecting the eyes to the rest of the mechanism.

Step 12



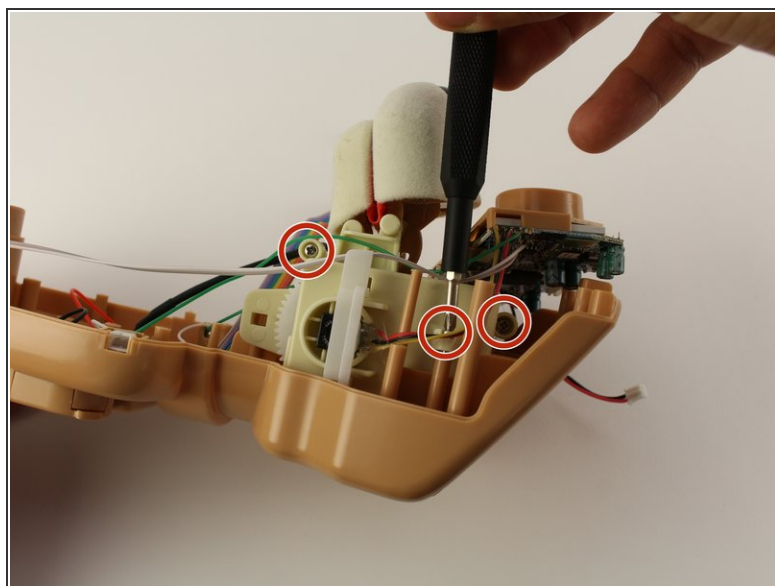
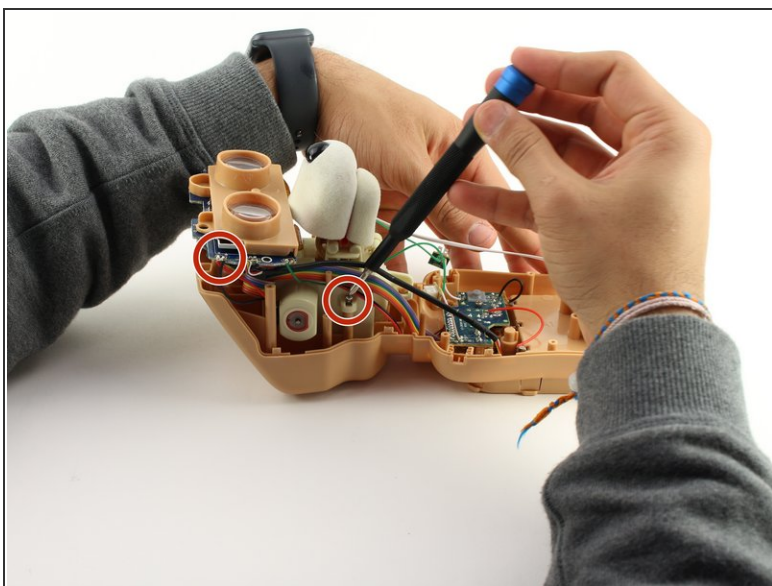
- Unplug the two sets of wires connected to the back of the eyes by using moderate to high force.

Step 13



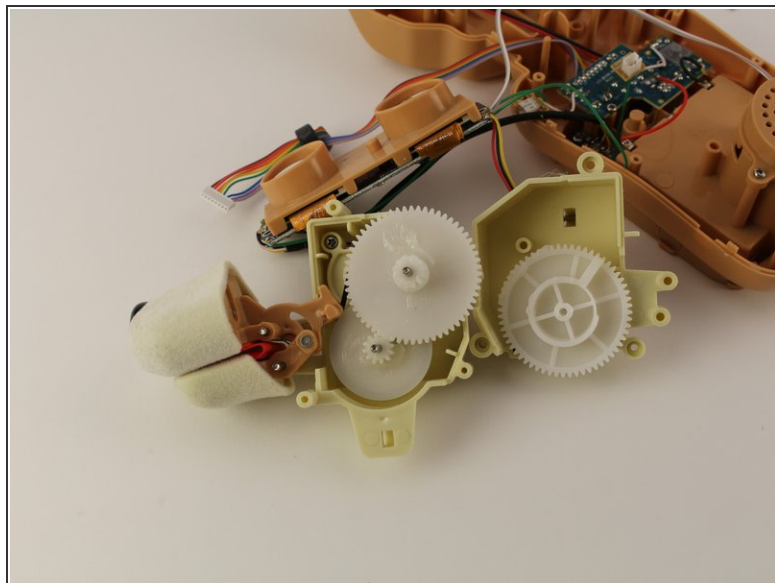
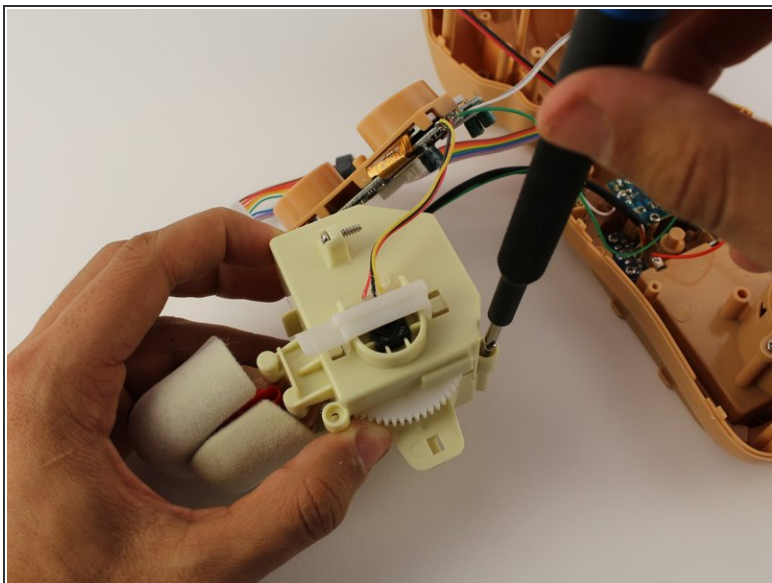
- Once those wires are disconnected, desolder the wires connected from the eye motherboard.

Step 14 — Mouth



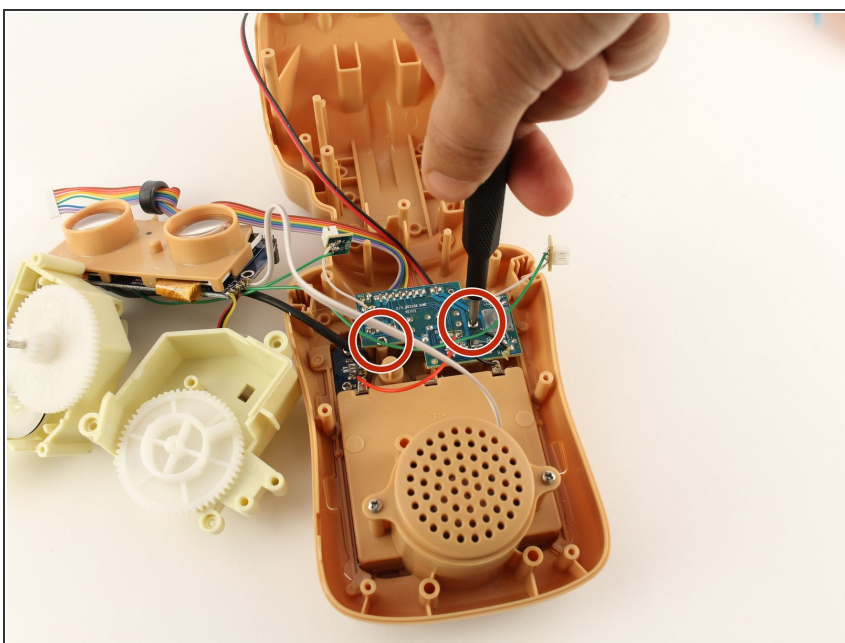
- Remove five 12.5mm Phillips #1 screws.
- Pull the mouth mechanism out of the shell.

Step 15



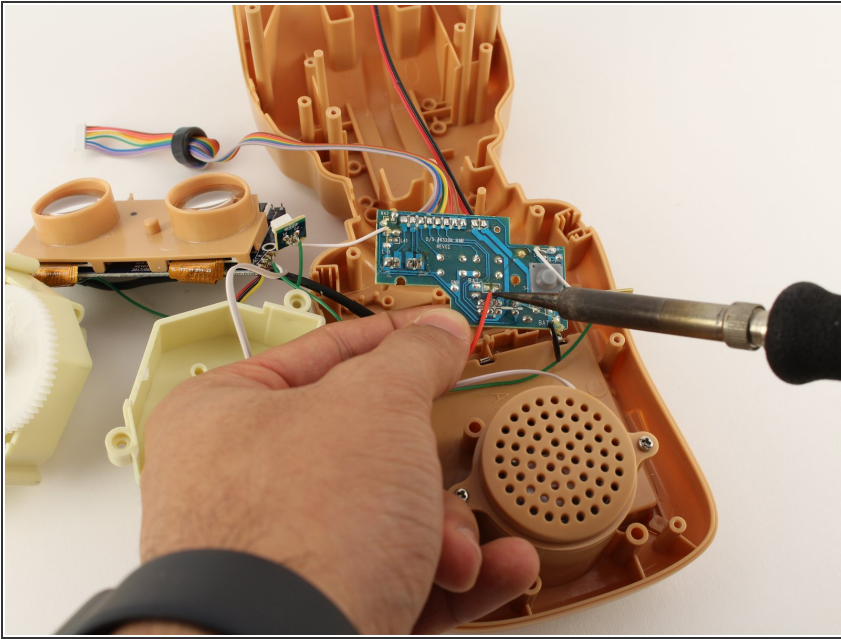
- Unscrew the last 12.5mm Phillips #1 screw holding the mouth together
- Open the mouth mechanism

Step 16 — Motherboard



- Remove the two 12.5 MM Phillips #1 screws holding the main motherboard into place.

Step 17



- Desolder all connections.

To reassemble your device, follow these instructions in reverse order.