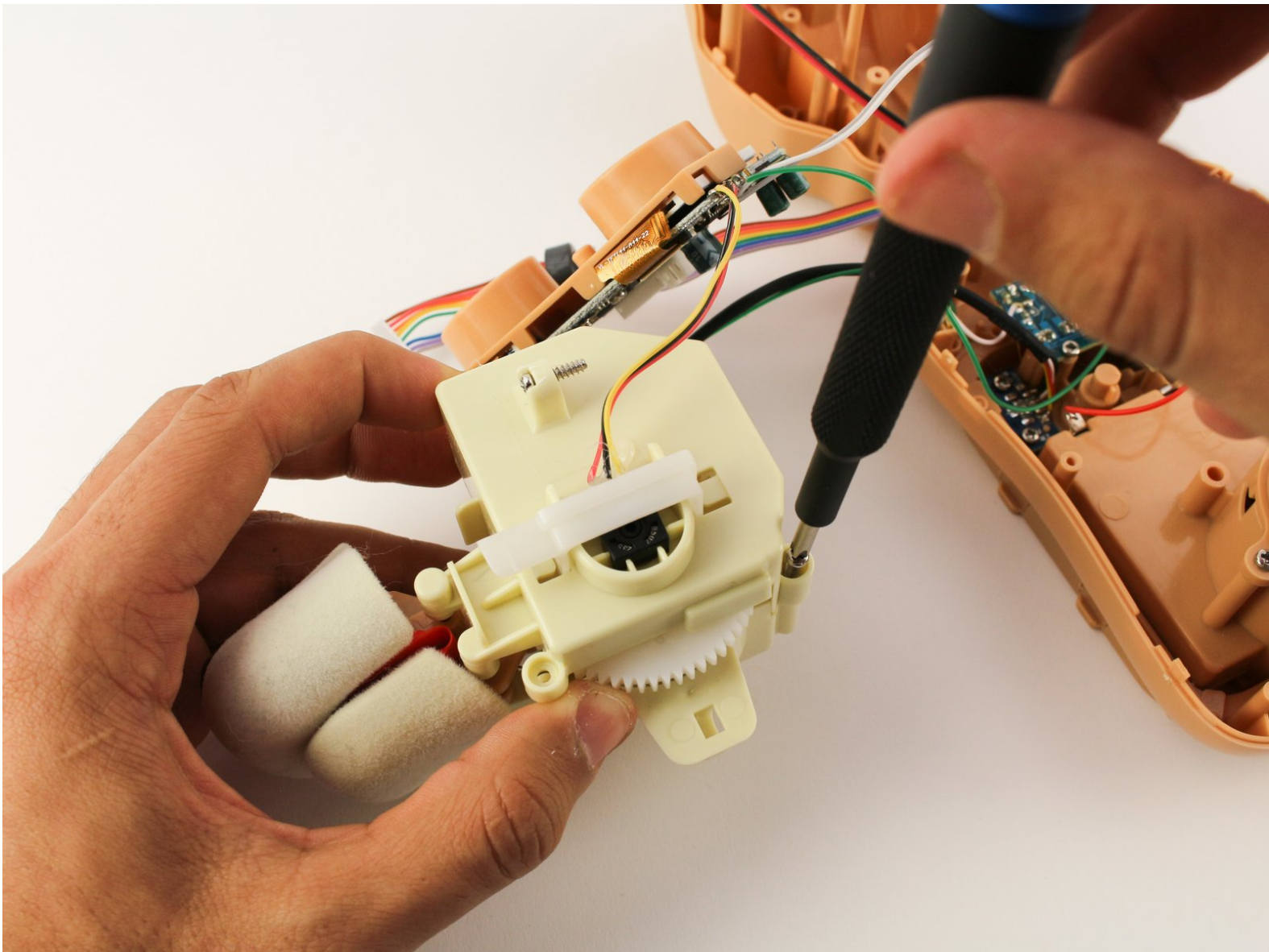




Teddy Ruxpin Mouth Replacement

If your Teddy Ruxpin's mouth is not moving...

Written By: Jayin Patel



INTRODUCTION

If your Teddy Ruxpin's mouth is not moving correctly or seems like it is malfunctioning, this replacement guide will help you fix your Teddy Ruxpin. The mouth should move along with storytime as audio is playing through the speaker. This guide will include desoldering and unscrewing, so be sure to utilize the iFixit [desoldering guide](#) while replacing this part as well as the other prerequisite guides.

TOOLS:

- [Phillips #1 Screwdriver](#) (1)
 - [Desoldering Braid](#) (1)
 - [Lead-Free Solder](#) (1)
 - [Staples](#) (1)
 - [Soldering paste](#) (1)
 - [Utility Scissors](#) (1)
 - [Soldering Workstation](#) (1)
 - [Phillips #2 Screwdriver](#) (1)
-

Step 1 — Battery



- Remove the vest covering the back of the bear.
- Orient the bear with his back facing upwards and unscrew the single Phillips #2 screw.
- ⓘ Captured screws will stay in place, no need to worry about losing this one!

Step 2



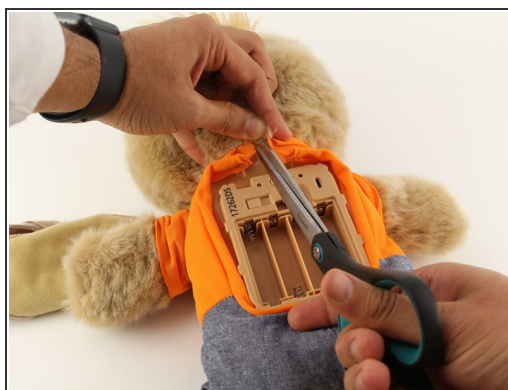
- Pull the tab outward to remove the protective plate for the batteries.

Step 3



- Remove all four AA batteries by pushing the positive end down and pulling the battery out toward yourself.

Step 4 — Arms



- Cut the orange shirt and zip tie.
- Remove the zip tie.

Step 5



- Cut across the back seam of the head of the bear along the arrow.

⚠ This damages the bear's exterior and will require resewing.

Step 6



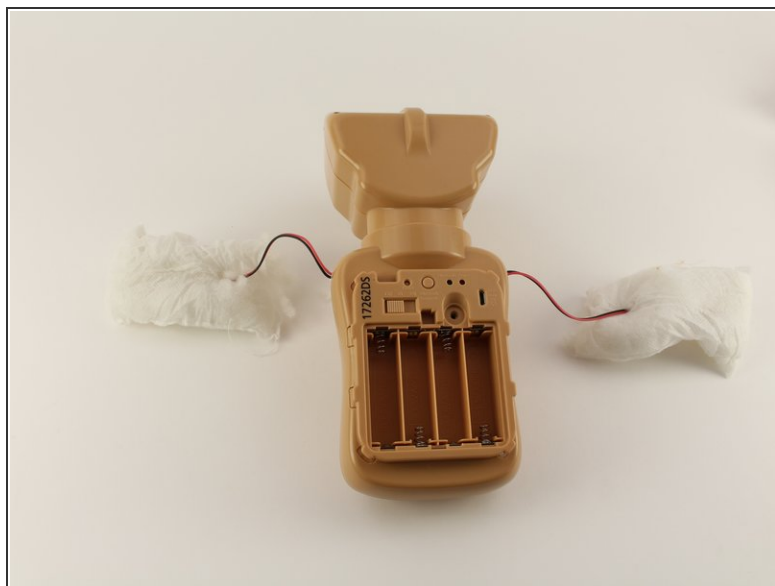
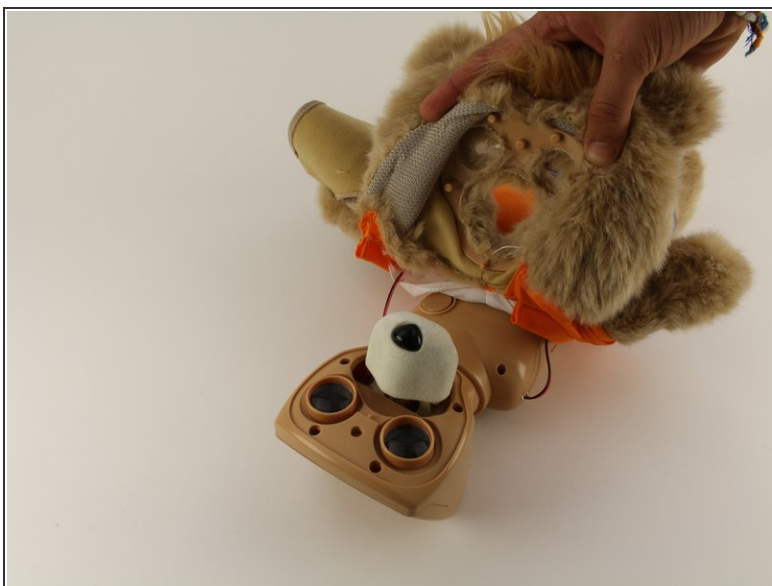
- Remove the interior of the doll.
 - Peel the outer layer around the head of the bear and forcefully pry off the face of the bear from the outside layer of the bear.
- i** This will be difficult and require significant force, but do not fear about breaking the doll at this stage.

Step 7



- Extract each arm button.
- ⓘ Pull on the stuffing of the bear and not the wire to remove the arm button.

Step 8



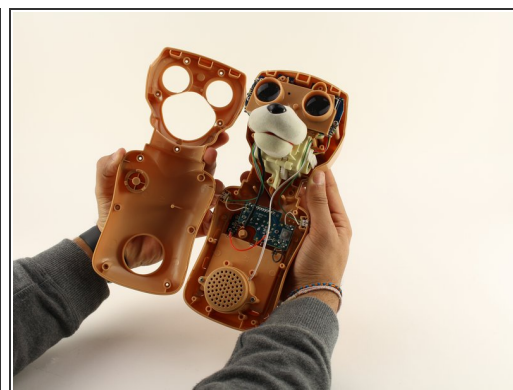
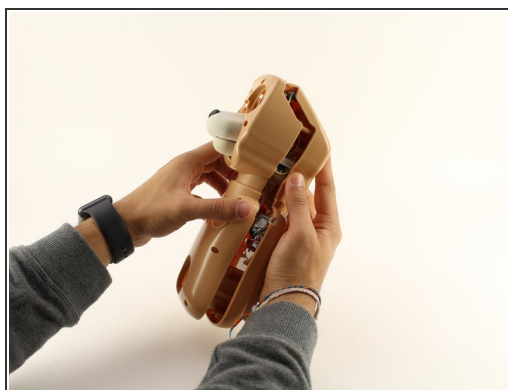
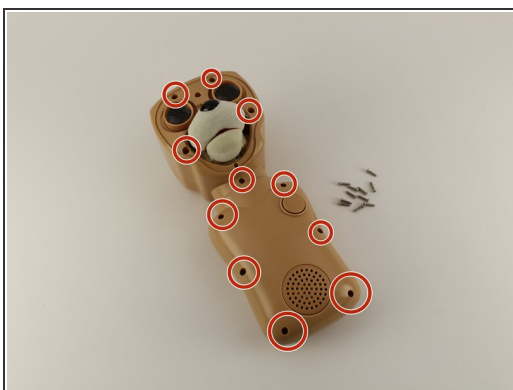
- Pull off the rest of the outside layer of the bear.

Step 9



- Unplug the arms from the main body.

Step 10 — Housing Cover



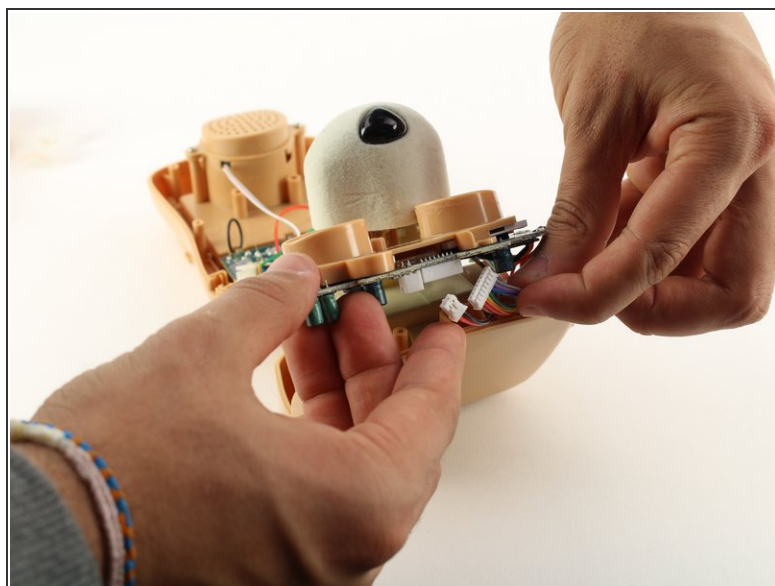
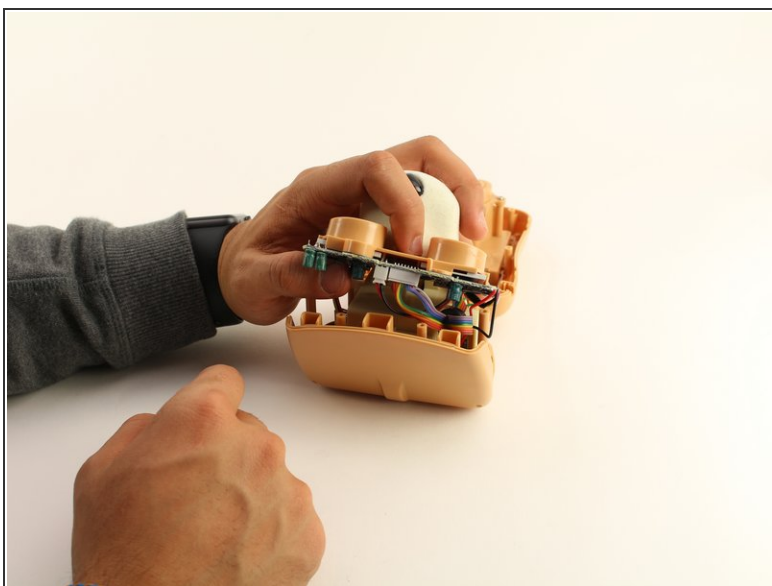
- Unscrew the eleven circled 12.5mm Phillips #1 screws.
- Remove the top of the housing to access the electronics inside.

Step 11 — Eyes



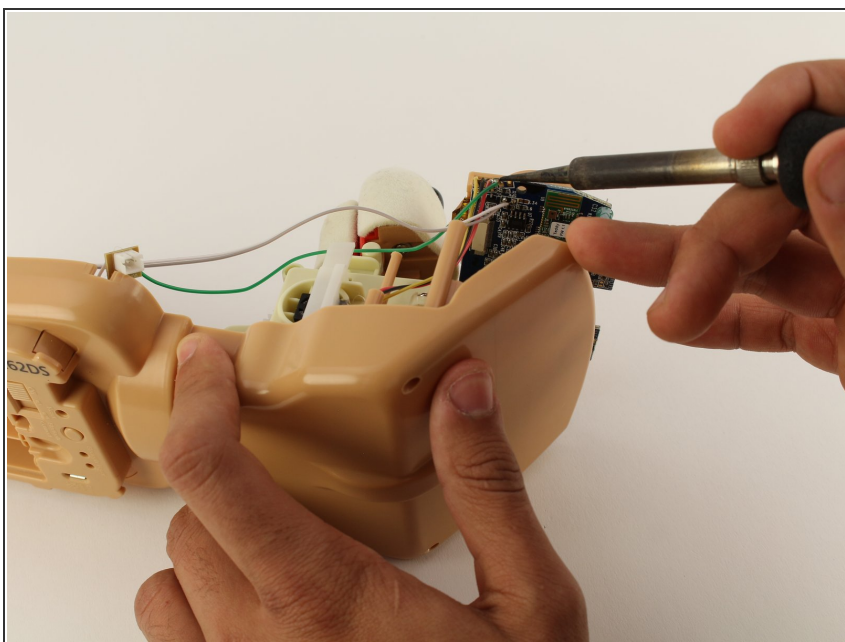
- Using a Phillips #1 screwdriver, remove the two 12.5mm screws connecting the eyes to the rest of the mechanism.

Step 12



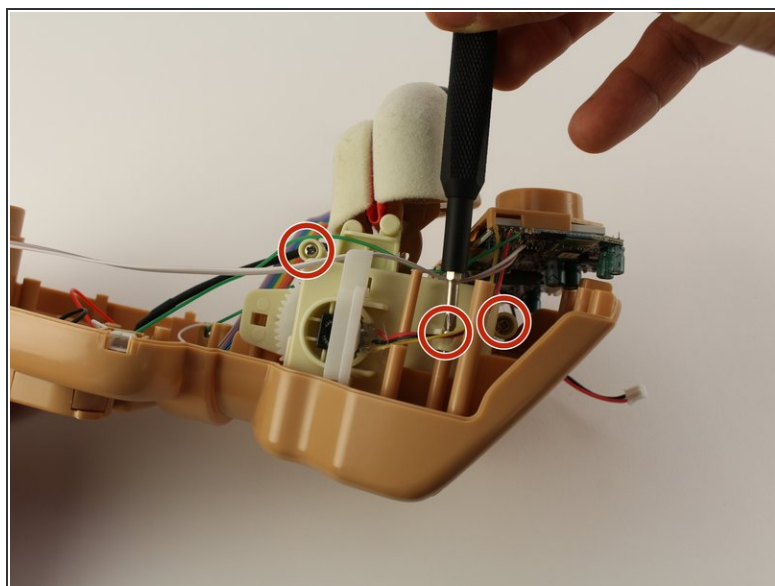
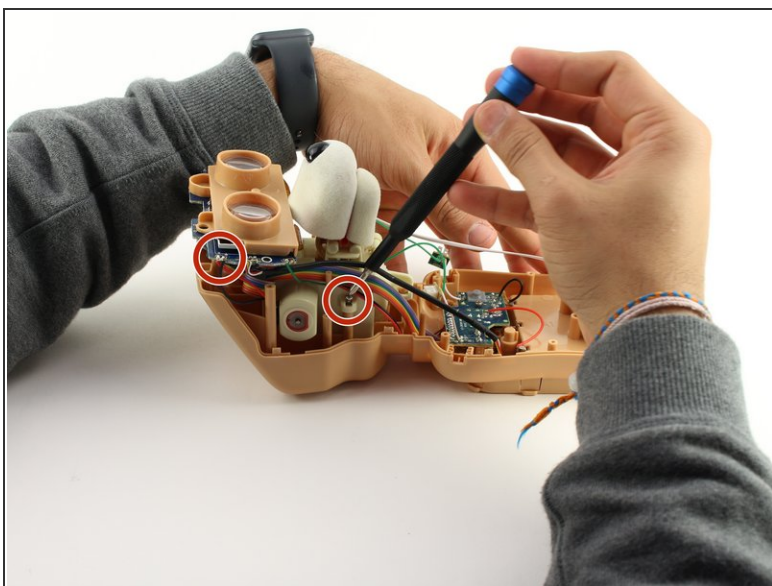
- Unplug the two sets of wires connected to the back of the eyes by using moderate to high force.

Step 13



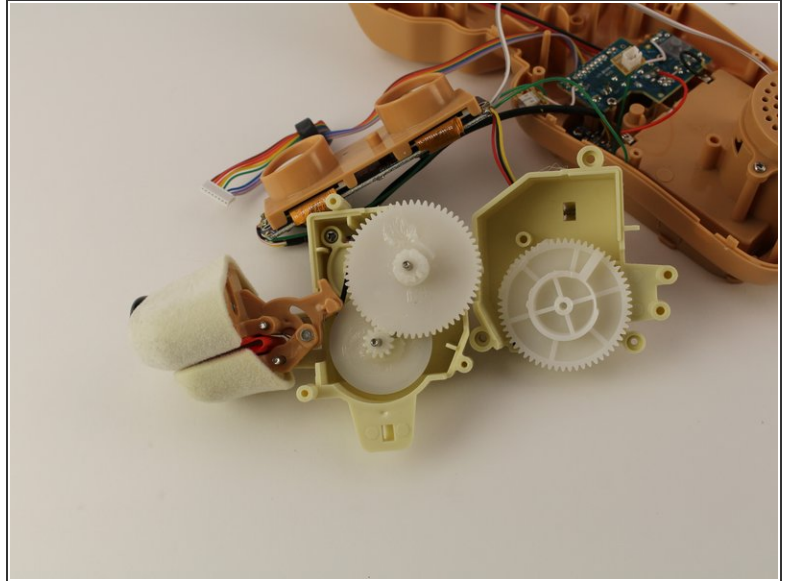
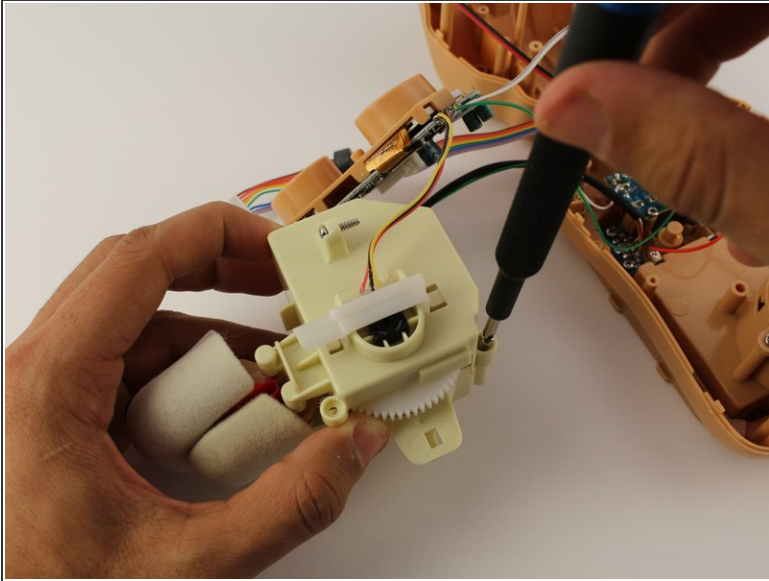
- Once those wires are disconnected, desolder the wires connected from the eye motherboard.

Step 14 — Mouth



- Remove five 12.5mm Phillips #1 screws.
- Pull the mouth mechanism out of the shell.

Step 15



- Unscrew the last 12.5mm Phillips #1 screw holding the mouth together
- Open the mouth mechanism

To reassemble your device, follow these instructions in reverse order.