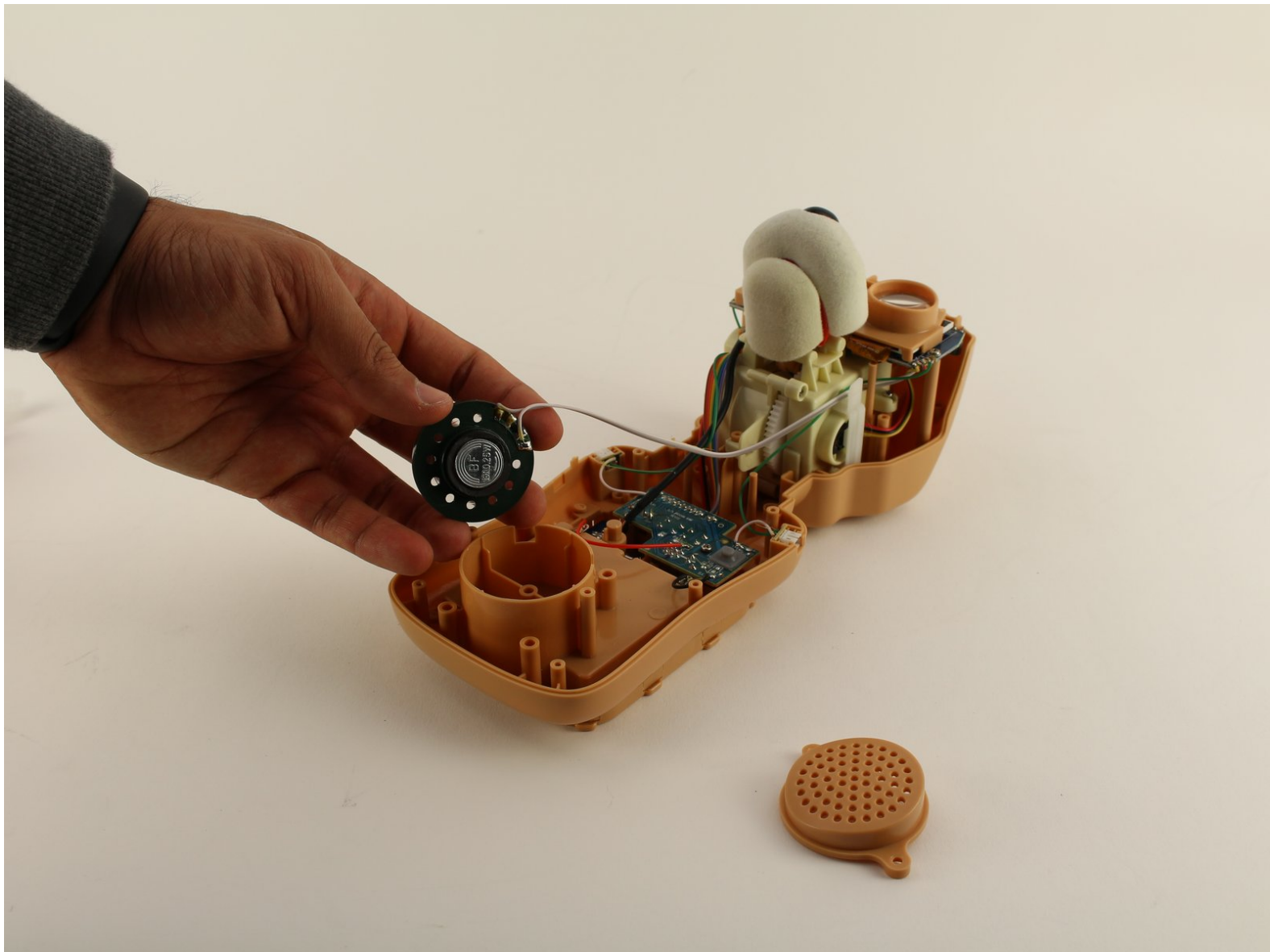




Teddy Ruxpin Speaker Replacement

This guide will help you resolve any problem...

Written By: Jayin Patel



INTRODUCTION

This guide will help you resolve any problem with your speaker on your Teddy Ruxpin model #17262DS. If the volume, sound quality, or general audio qualities of your bear are lacking this guide should help you fix those issues. A Phillips #1 screwdriver is required to complete this guide. Desoldering is also required so be sure to look at the [desoldering guide](#) for help.



TOOLS:

- [Phillips #1 Screwdriver](#) (1)
- [Soldering paste](#) (1)
- [Utility Scissors](#) (1)
- [Phillips #2 Screwdriver](#) (1)
- [Soldering Workstation](#) (1)
- [Desoldering Braid](#) (1)

Step 1 — Battery



- Remove the vest covering the back of the bear.
- Orient the bear with his back facing upwards and unscrew the single Phillips #2 screw.
- ⓘ Captured screws will stay in place, no need to worry about losing this one!

Step 2



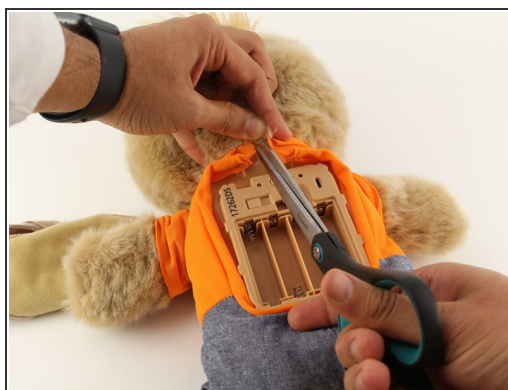
- Pull the tab outward to remove the protective plate for the batteries.

Step 3



- Remove all four AA batteries by pushing the positive end down and pulling the battery out toward yourself.

Step 4 — Arms




- Cut the orange shirt and zip tie.
- Remove the zip tie.

Step 5




- Cut across the back seam of the head of the bear along the arrow.

 This damages the bear's exterior and will require resewing.

Step 6



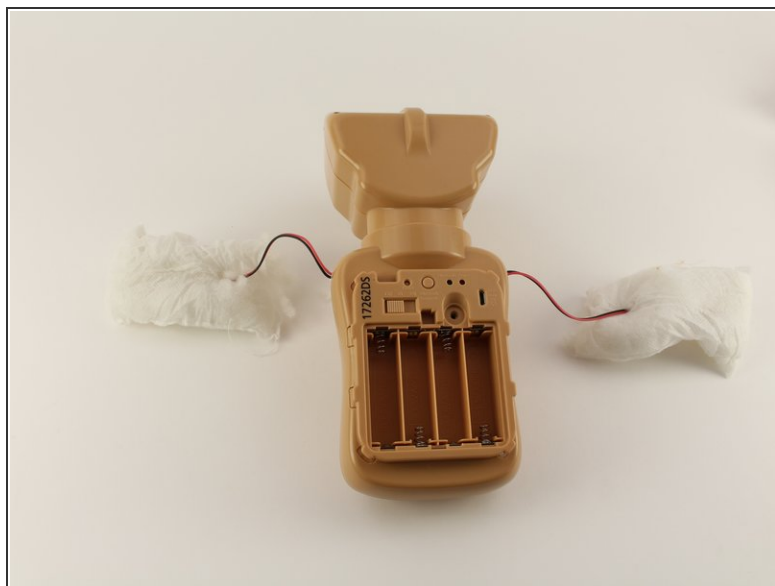
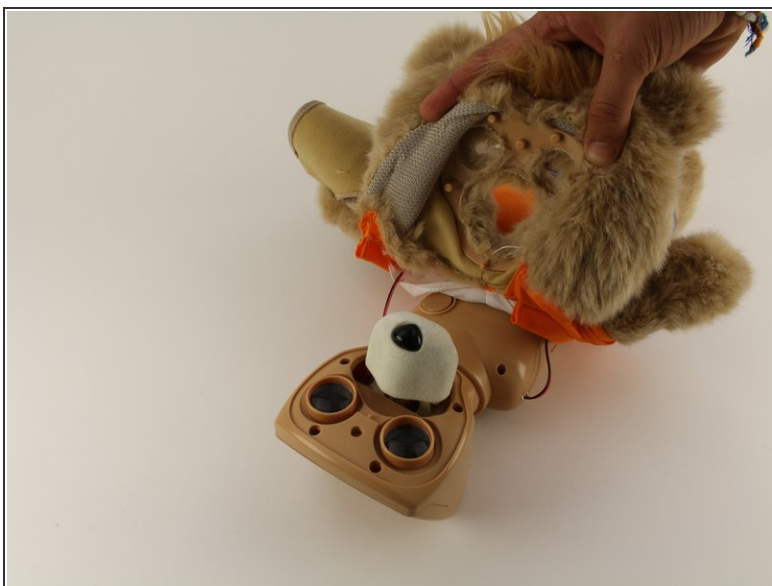
- Remove the interior of the doll.
 - Peel the outer layer around the head of the bear and forcefully pry off the face of the bear from the outside layer of the bear.
-  This will be difficult and require significant force, but do not fear about breaking the doll at this stage.

Step 7



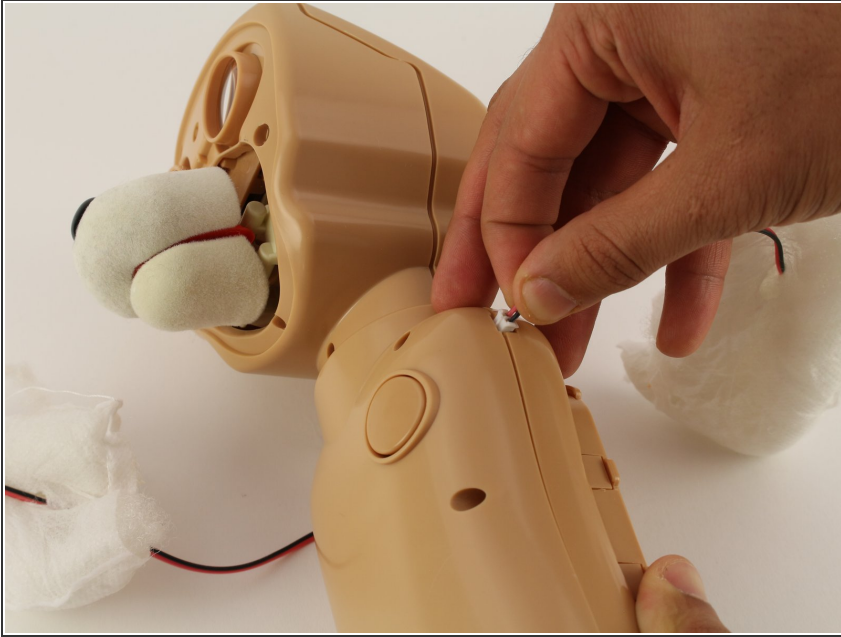
- Extract each arm button.
- ⓘ Pull on the stuffing of the bear and not the wire to remove the arm button.

Step 8



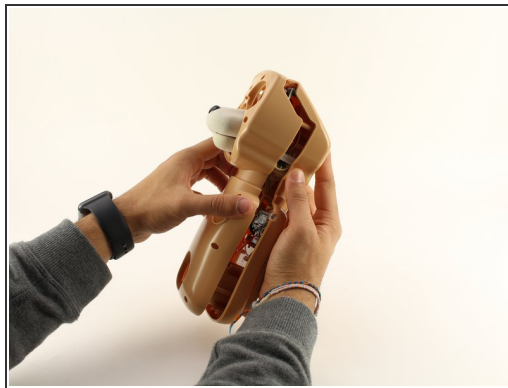
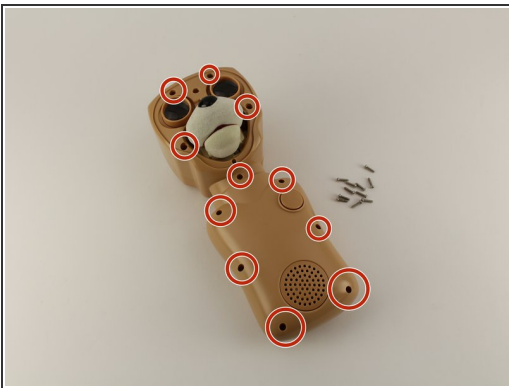
- Pull off the rest of the outside layer of the bear.

Step 9



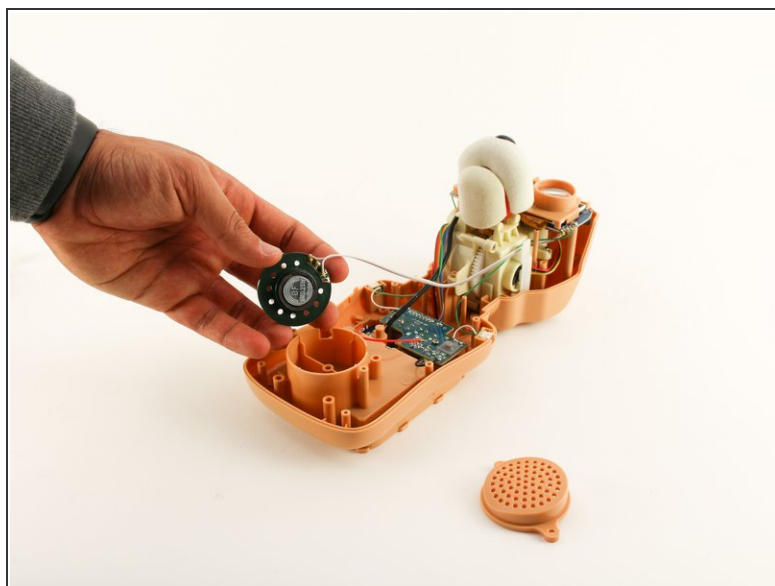
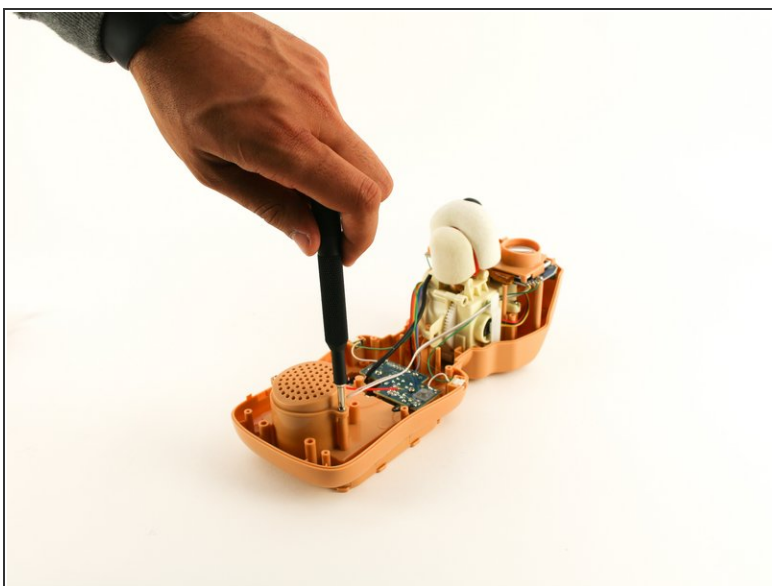
- Unplug the arms from the main body.

Step 10 — Housing Cover



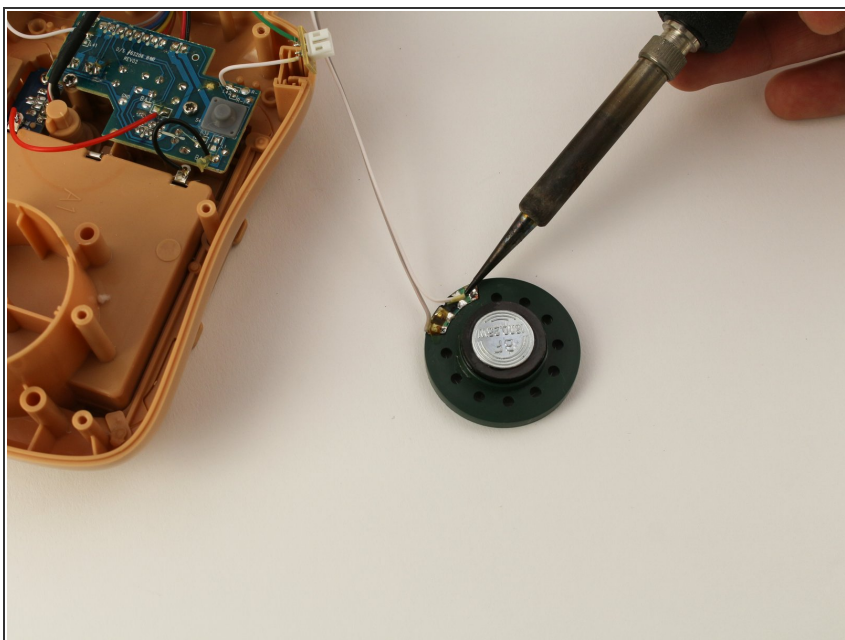
- Unscrew the eleven circled 12.5mm Phillips #1 screws.
- Remove the top of the housing to access the electronics inside.

Step 11 — Speaker



- Unscrew the two 12.5mm Phillips #1 screws holding the speaker cap on and remove the speaker cap.

Step 12



- Desolder the wire from the speaker and replace.

To reassemble your device, follow these instructions in reverse order.

This document was generated on 2023-01-31 09:19:46 PM (MST).

