

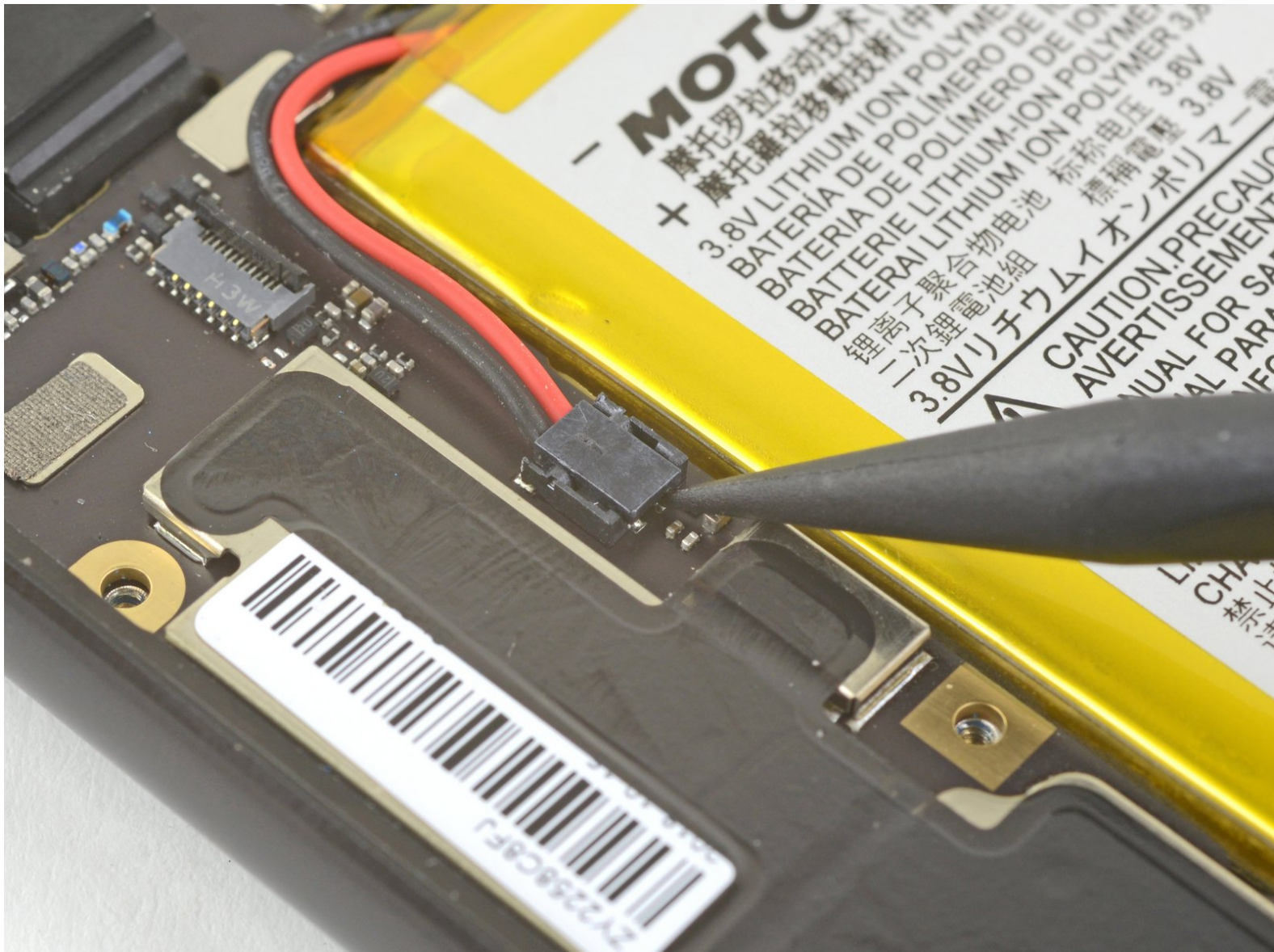


Motorola Moto X4 Battery Disconnect

Prerequisite

Prerequisite guide only! Disconnects the battery for the Moto X4.

Written By: Arthur Shi



INTRODUCTION

This is a prerequisite guide! This guide is part of an another procedure and is not meant to be used alone.

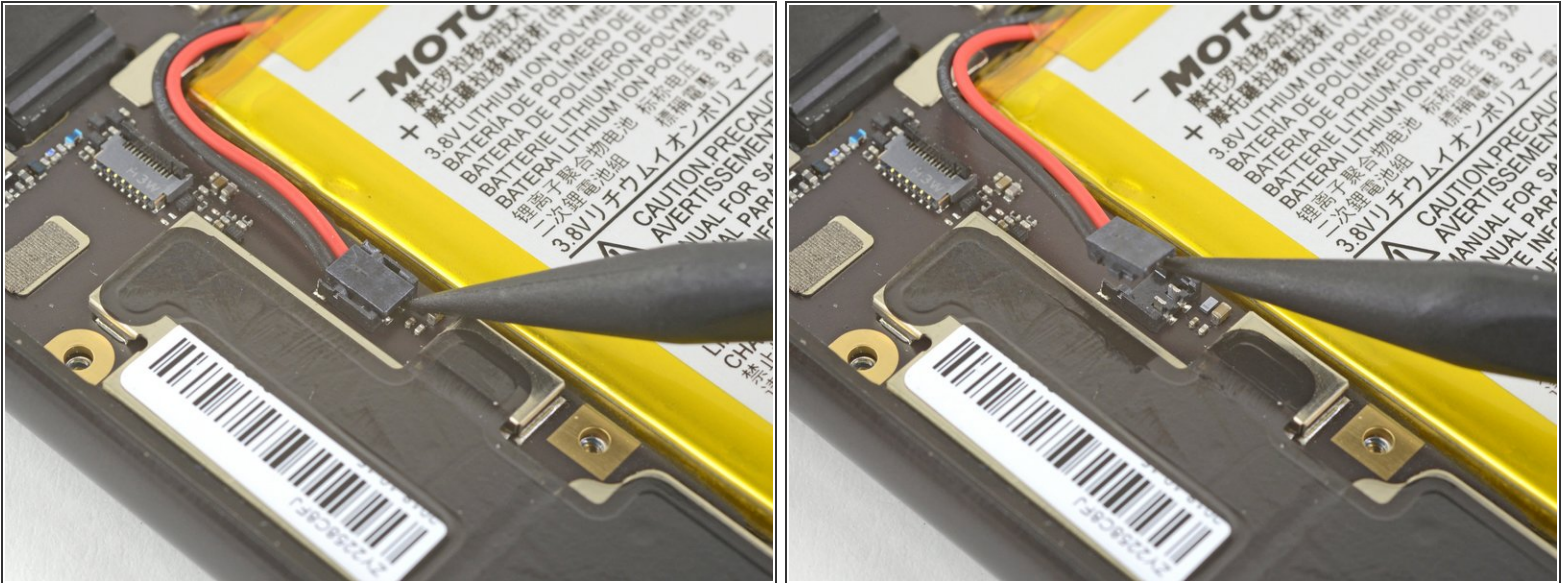
Disconnects the battery for the Moto X4.



TOOLS:

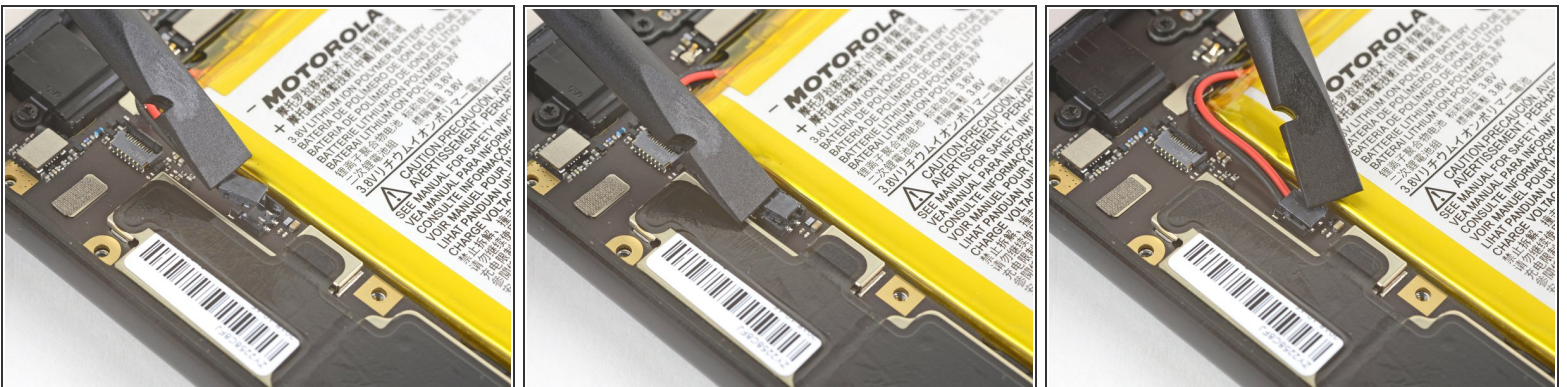
- [Spudger](#) (1)
-

Step 1 — Disconnect the battery



- Insert the point of a spudger underneath the top edge of the battery connector.
 - ⚠ Be careful not to dislodge the small surface-mounted components surrounding the socket.
- Gently pry up the connector to disconnect the battery.

Step 2



- ☑ To re-connect the battery, align the connector on top of the socket, and press it down with your finger or a spudger.

To reassemble your device, follow these instructions in reverse order.