



Teddy Ruxpin Arm Button Replacement

This guide will teach you how to gently remove and replace the arm buttons of the Teddy Ruxpin.

Written By: Lauren



INTRODUCTION

Is your Teddy Ruxpin story-time mood or singing not working? Your Teddy Ruxpin's arm buttons might need to be replaced! This guide will take you through the proper steps on how to remove the buttons with ease. For this guide, all you will need is a pair of scissors and a Phillips #1 and #2 screwdriver. There are not many difficult steps but pull the wires with caution as you do not want to break them.



TOOLS:

- [Phillips #2 Screwdriver](#) (1)
 - [Phillips #1 Screwdriver](#) (1)
-

Step 1 — Battery



- Remove the vest covering the back of the bear.
- Orient the bear with his back facing upwards and unscrew the single Phillips #2 screw.
- ⓘ Captured screws will stay in place, no need to worry about losing this one!

Step 2



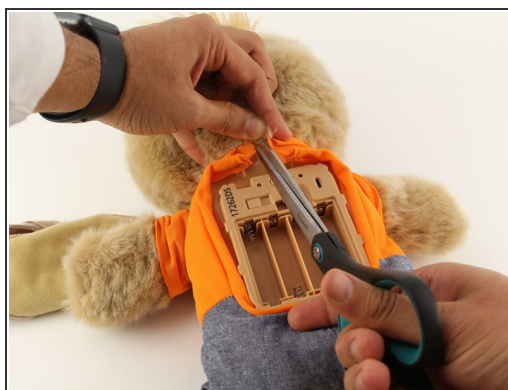
- Pull the tab outward to remove the protective plate for the batteries.

Step 3



- Remove all four AA batteries by pushing the positive end down and pulling the battery out toward yourself.

Step 4 — Arms




- Cut the orange shirt and zip tie.
- Remove the zip tie.

Step 5




- Cut across the back seam of the head of the bear along the arrow.

 This damages the bear's exterior and will require resewing.

Step 6



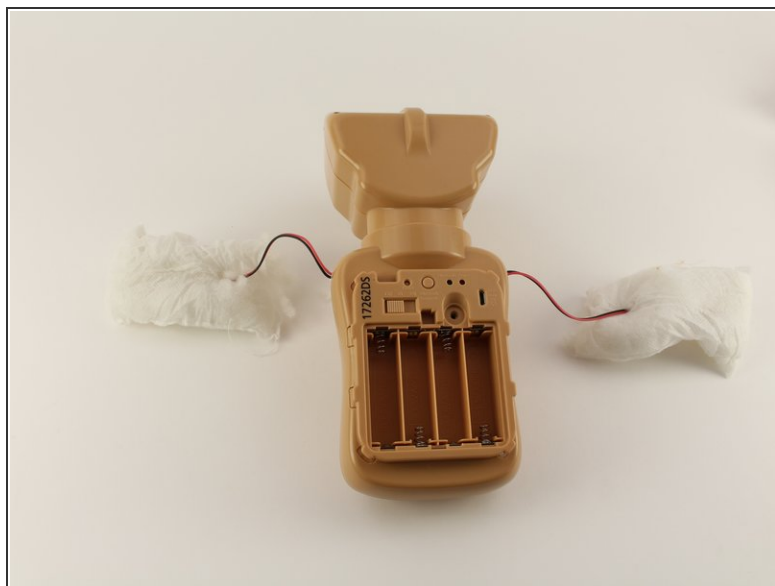
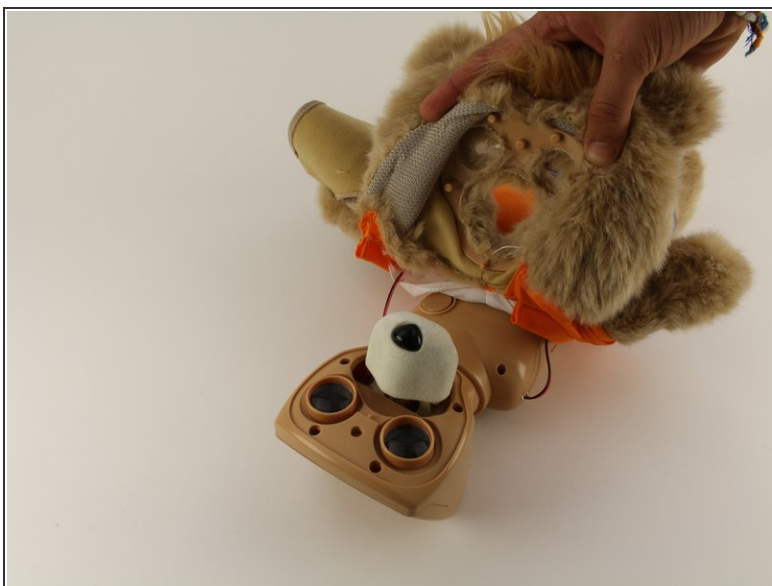
- Remove the interior of the doll.
 - Peel the outer layer around the head of the bear and forcefully pry off the face of the bear from the outside layer of the bear.
-  This will be difficult and require significant force, but do not fear about breaking the doll at this stage.

Step 7



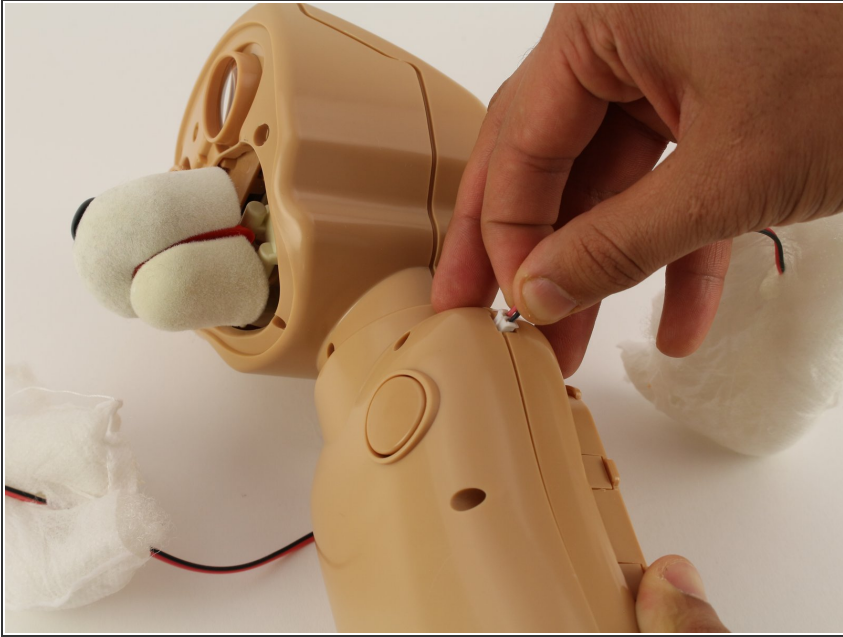
- Extract each arm button.
- ⓘ Pull on the stuffing of the bear and not the wire to remove the arm button.

Step 8



- Pull off the rest of the outside layer of the bear.

Step 9



- Unplug the arms from the main body.

To reassemble your device, follow these instructions in reverse order.