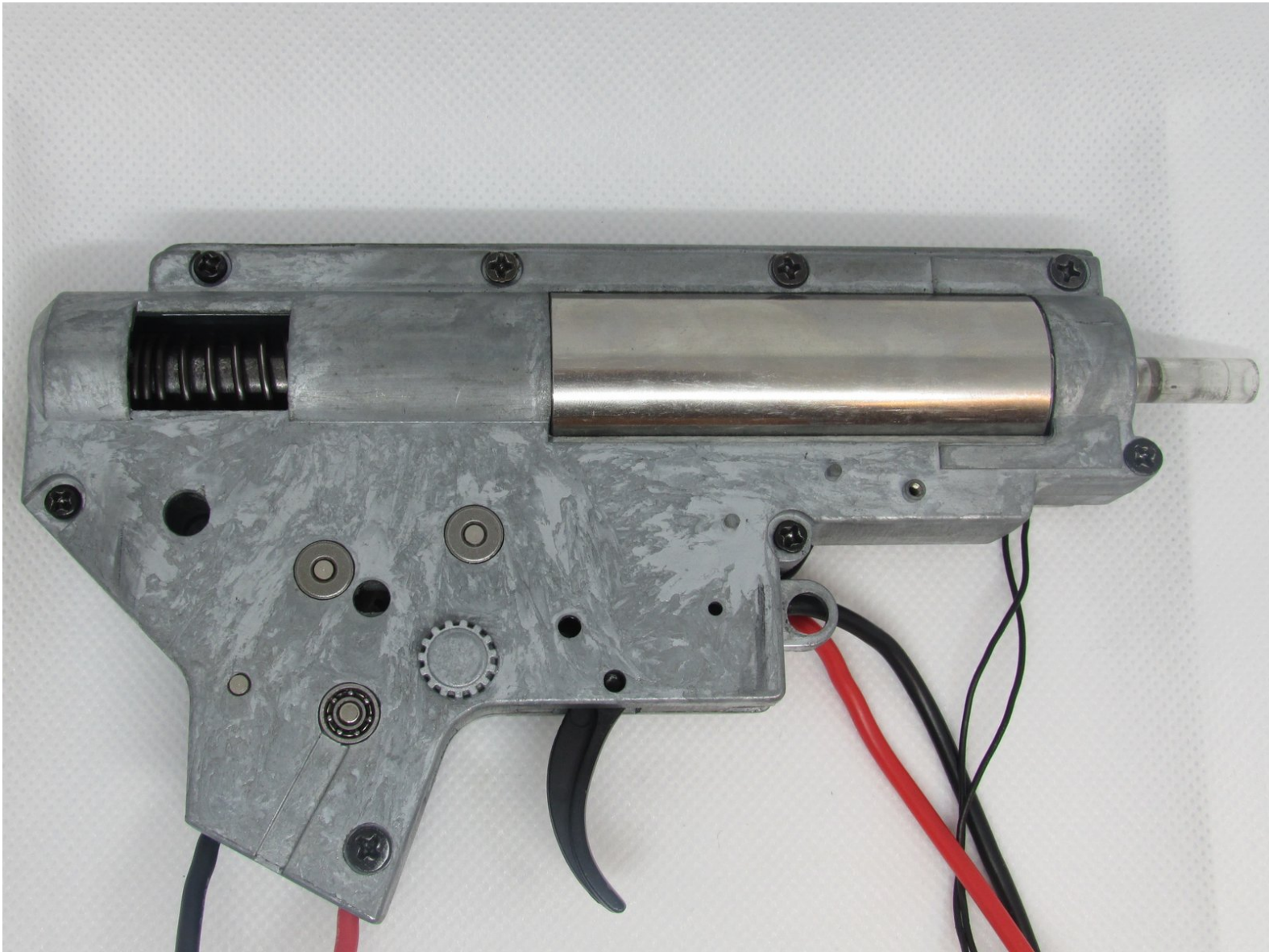




Airsoft V2 Gearbox Piston Replacement

Replace a stripped or broken piston in an airsoft V2 gearbox.

Written By: Dustin Slider



INTRODUCTION

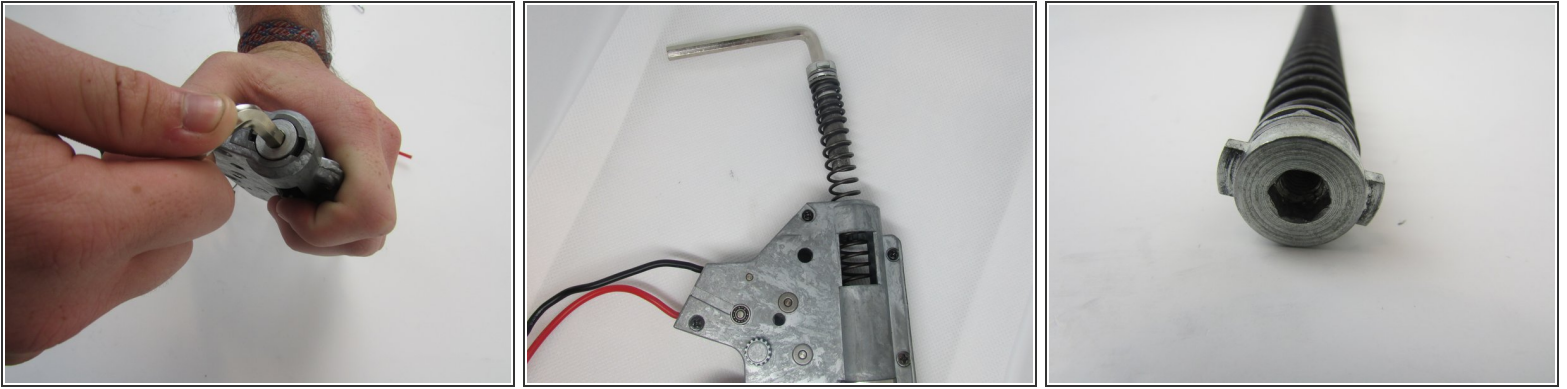
Airsoft guns are a fun tool used in the sport of airsoft. The sport is similar to paintball, however, the guns used more closely resemble their real counterparts and instead of paint they shoot small plastic BBs. This guide goes over one of the more common problems in the sport, broken internal parts, and more specifically the piston. This issue typically presents itself as either a loud and awful sounding grinding/screeching noise, or by very low to non-existent compression. Use this repair guide to replace a piston and restore your airsoft gun to working condition. These instructions take will you step by step to disassemble, replace a part, and reassemble your airsoft gun.



TOOLS:

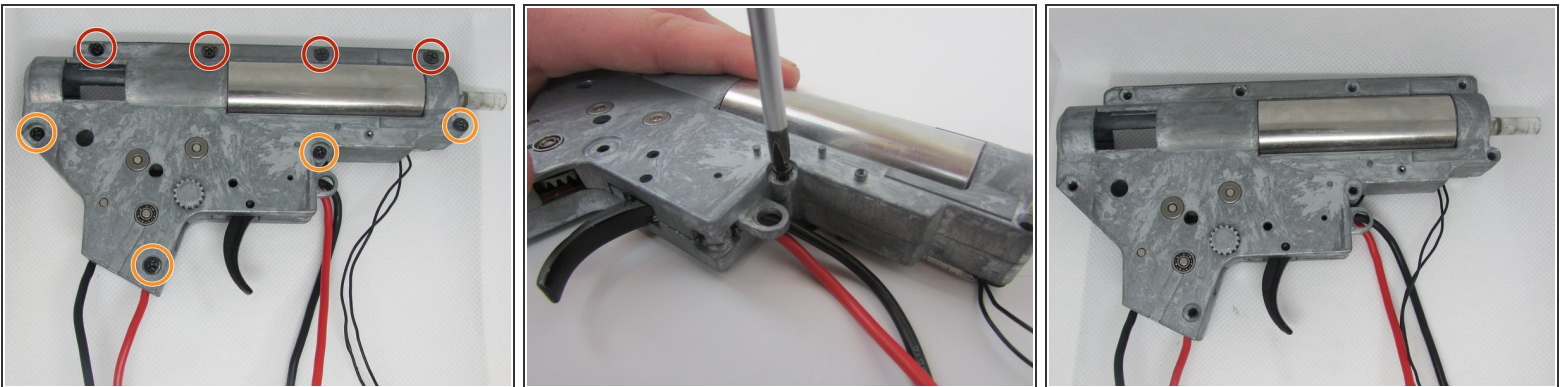
- [Phillips #3 Screwdriver](#) (1)
 - [Pick Tool](#) (1)
 - [6mm Allen Wrench](#) (1)
-

Step 1 — Piston



- Insert the 6 mm Allen wrench into the back of the spring guide at the back of the gearbox.
- Push in and turn the wrench 90 degrees to release the spring guide and spring.
- ⓘ The spring is heavy and will require a lot of force to push in.
- ⓘ The goal of turning the wrench is to line up the winglets with the holes in the back of the gearbox.
- ⚠ The spring will want to jump out of the gearbox, so hold on to it tightly.

Step 2



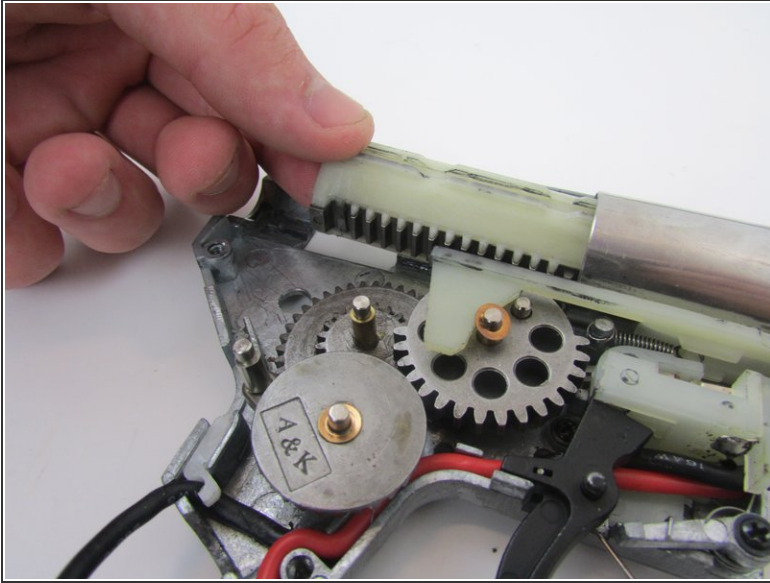
- Take out the eight screws (four lower and four upper) using the #3 Phillips-Head screwdriver.
- Top four screws are M3 6mm
- Bottom four screws are M3 16mm

Step 3



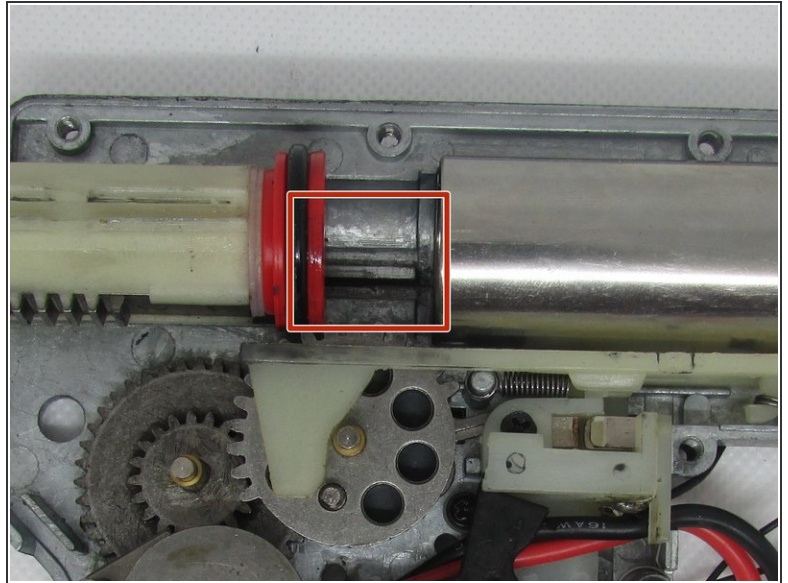
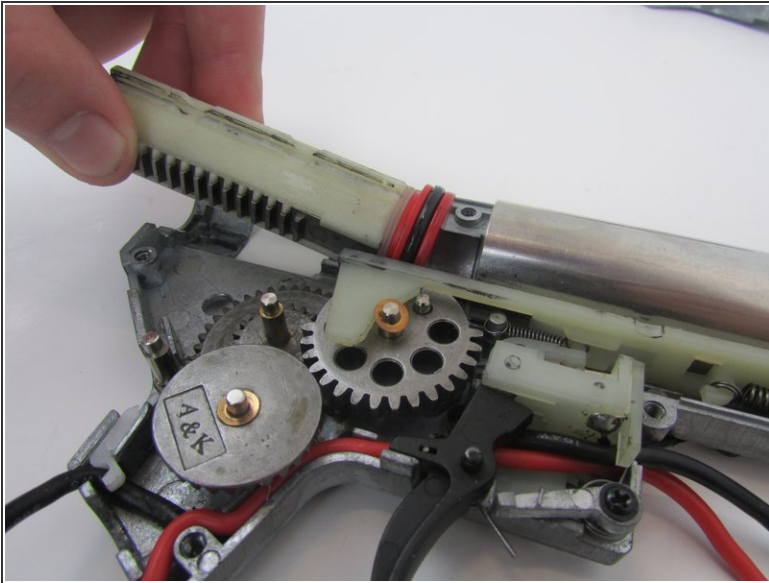
- Carefully separate the bottom half of the gun from the top half, leaving the cylinder and gears in place.
- The anti-reversal latch (left, photo 3) has a spring on it that forces it out of place. If it falls out of the gearbox, put it back in facing the first gear.
- The trigger (right, photo 3) has a spring that likes to push the trigger away from the gearbox. Keep an eye on it and put it back in if needed.

Step 4



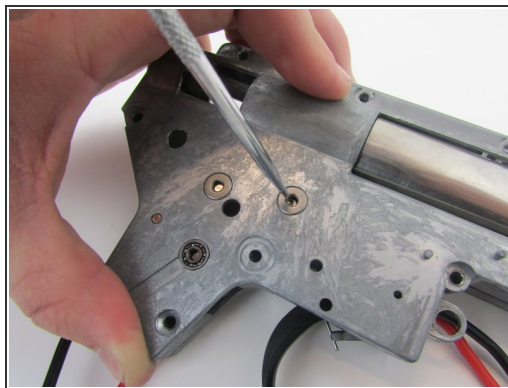
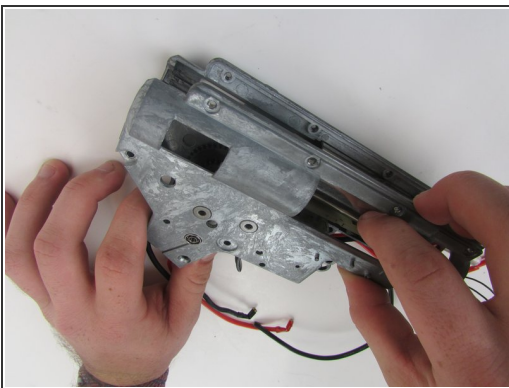
- Remove the piston.
- ⓘ You may need to take off the piston head and put it on the new piston depending on what part you have.

Step 5



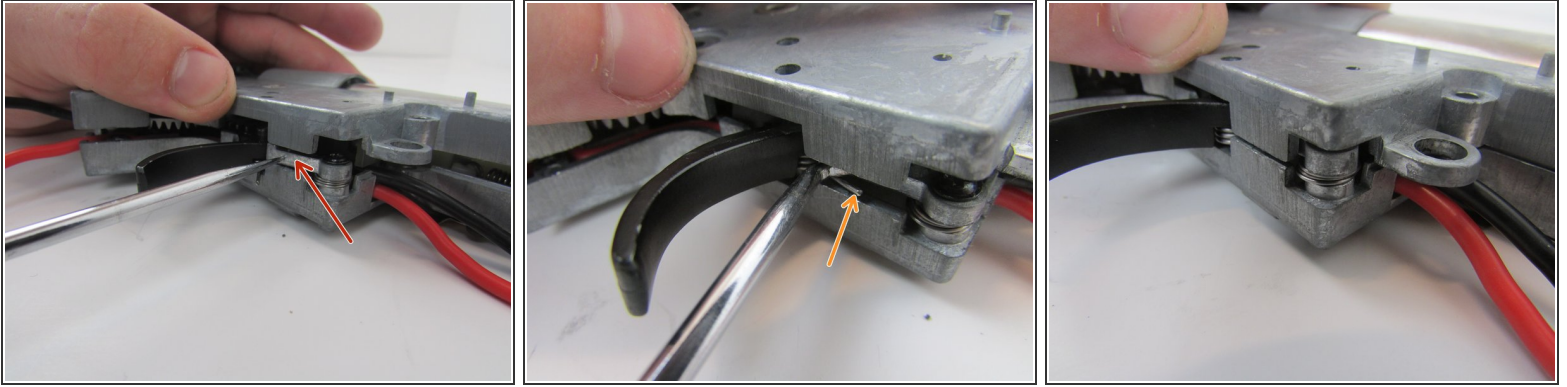
- Insert the new piston into the gun.
- ⓘ The piston should have the teeth facing the gears and index into the ridge behind the cylinder.

Step 6



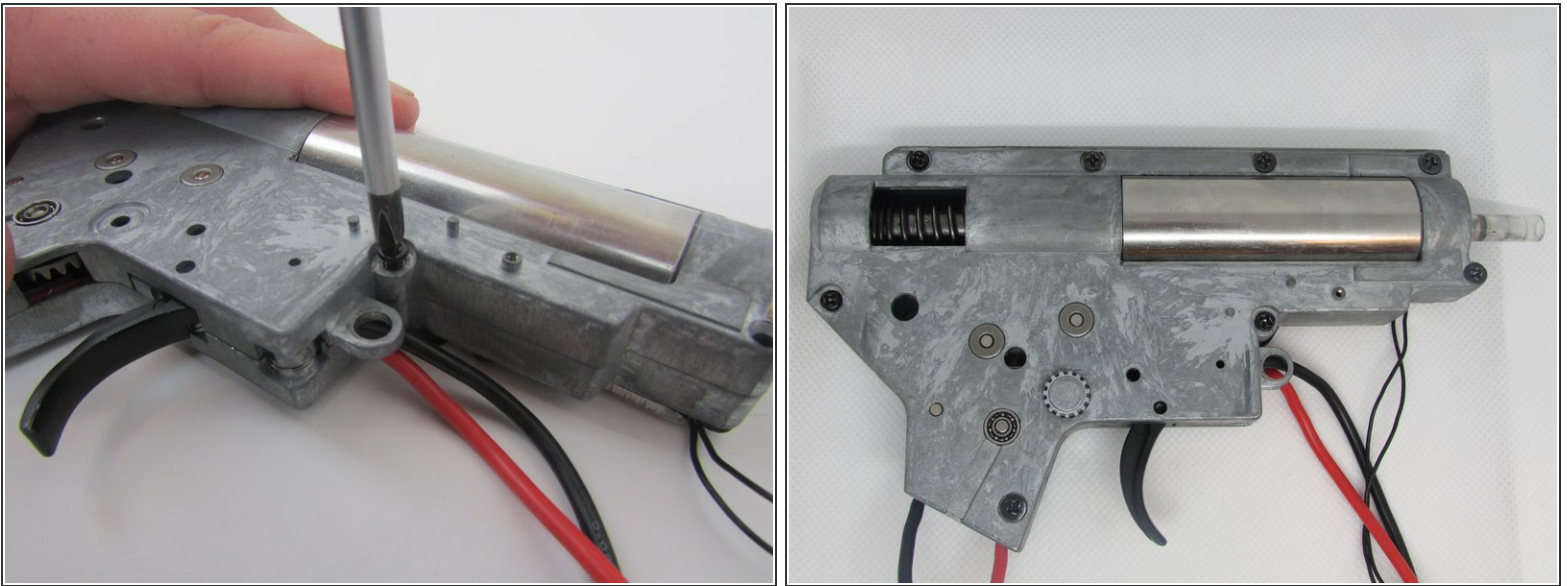
- Replace the top half of the gearbox using the pick to line up all of the gears with their respective holes.
- ⓘ Ensure that the trigger and the anti-reversal latch are lined up with their respective holes (Orange).

Step 7



- Use the pick to push the safety bar into the gearbox once the gears are aligned.
- If the trigger spring pops out, use the pick to slide the spring back in before closing the gearbox.

Step 8



- Repeat steps 1-2 in reverse order.
- ☑ When putting the spring back in, the winglets on the spring guide should go through the holes on the back of the gearbox and then be turned 90 degrees.

To reassemble your device, follow steps 1-2 in reverse order.