



# Edco KL14 Arbor Replacement

Replace a damaged arbor assembly on the Edco Cement Saw KL1465H.

Written By: Craig Lloyd



# INTRODUCTION

Follow this guide to replace a damaged arbor assembly on the Edco Cement Saw KL1465H.



## TOOLS:

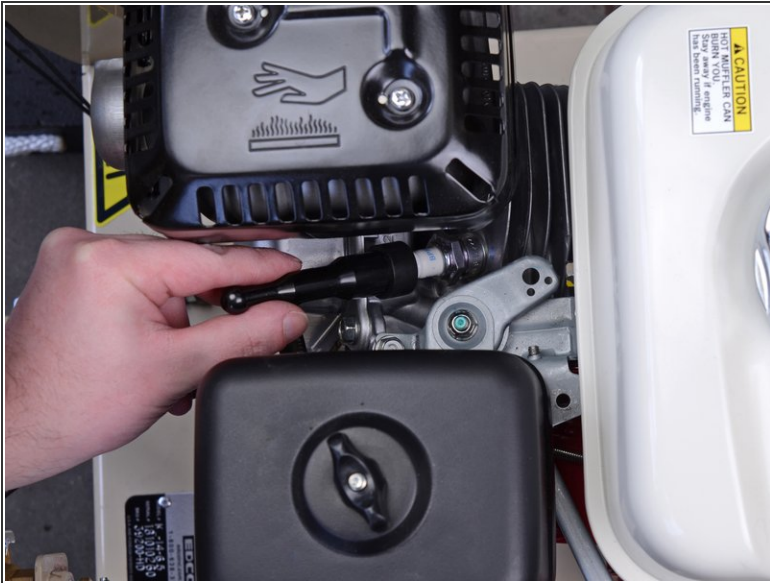
- [Wheel Chocks](#) (1)
- [9/16" Wrench](#) (1)
- [3/4" Wrench](#) (1)
- [3/8" Wrench](#) (1)
- [6 Inch C-Clamp](#) (1)



## PARTS:

- [Edco Arbor 110213](#) (1)

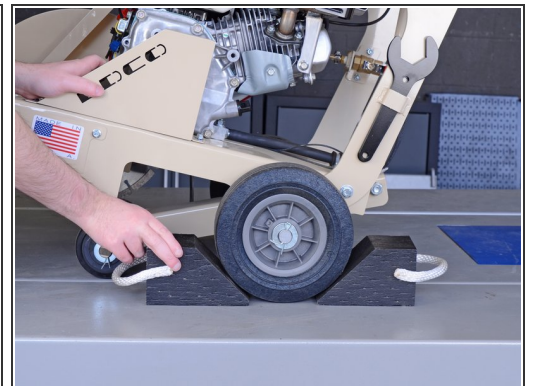
## Step 1 — Disengage the Spark Plug



**⚠ Before you begin, ensure that the machine is powered down and cool to the touch.**

- Disconnect the spark plug to prevent the engine from accidentally starting up during service:
  - Grab the plastic spark plug cap at the end of the spark plug wire.
  - Firmly pull to disconnect the spark plug cap from the spark plug.

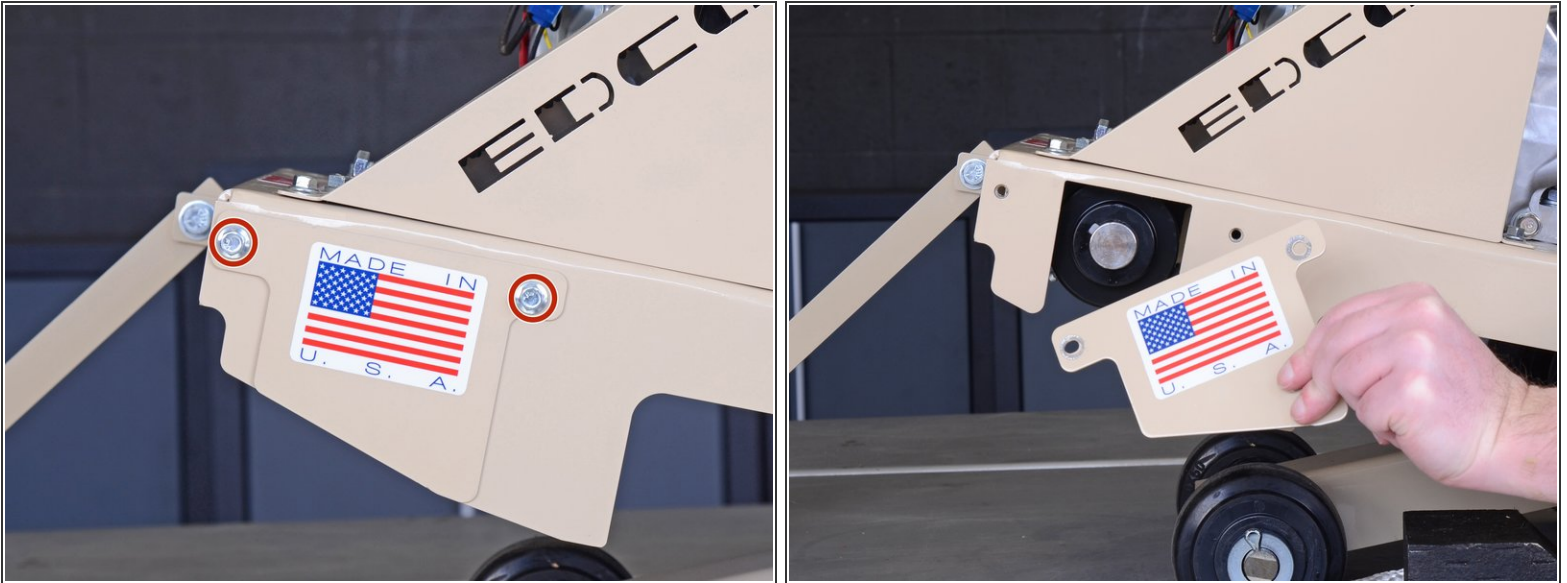
## Step 2 — Place Wheel Chocks



- To prevent the concrete saw from rolling during service, place wheel chocks in front of and behind a rear wheel.



### Step 3 — Remove the Arbor Guard



- Use a 3/8-inch wrench to remove the two bolts securing the arbor guard.
- Remove the arbor guard.

### Step 4 — Remove the Belt Guard



- Use a 3/8-inch wrench to remove the two bolts securing the belt guard.
- Remove the belt guard.

## Step 5 — Arbor



- Lower the guide bar all the way down until it rests on the work surface.

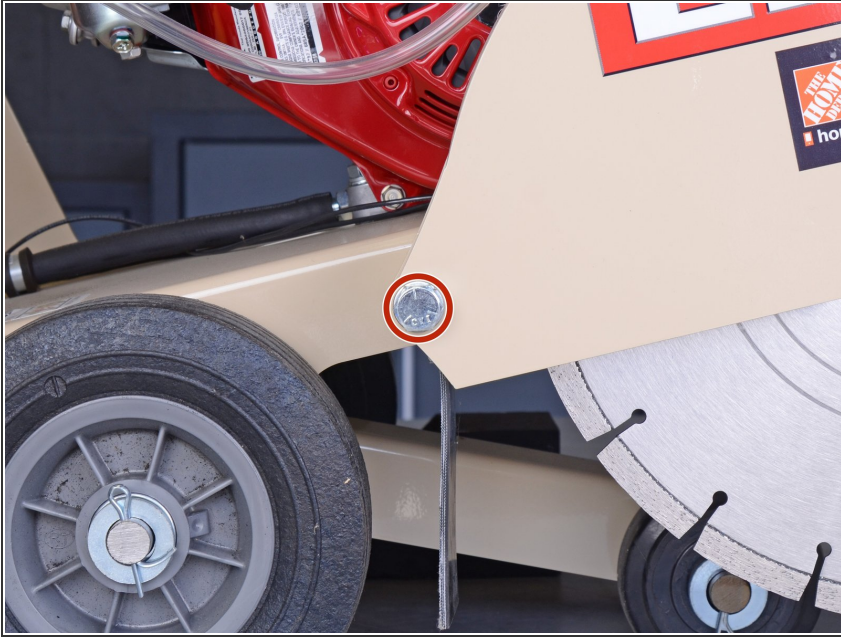
## Step 6 — Remove the Blade



- Use a 9/16-inch wrench to remove the bolt securing the blade cover.



## Step 7



- Use a 3/4-inch wrench to loosen the blade cover pivot bolt, but do not remove it.

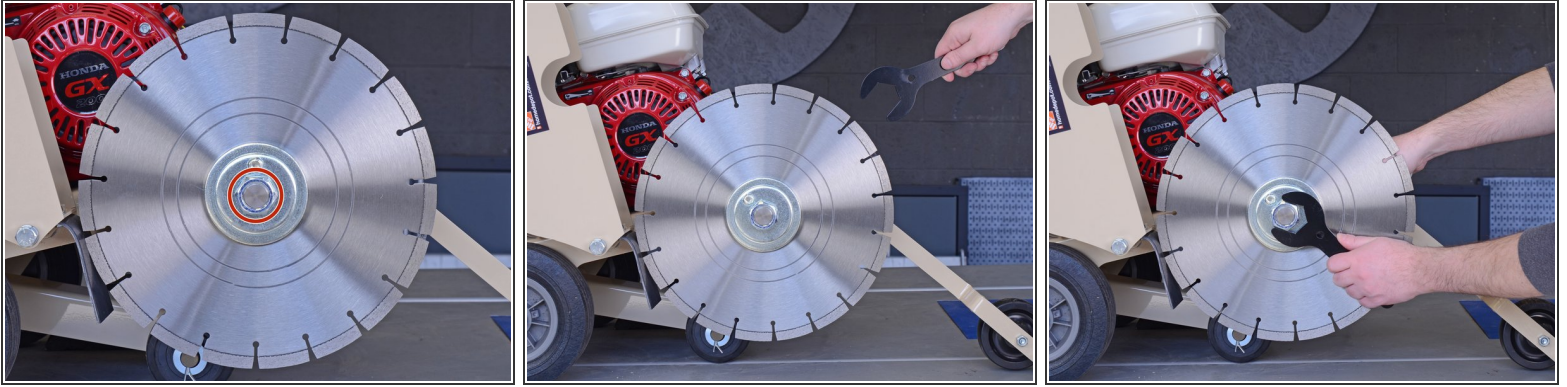
## Step 8



- Raise the blade cover all the way up to expose the cutting blade.

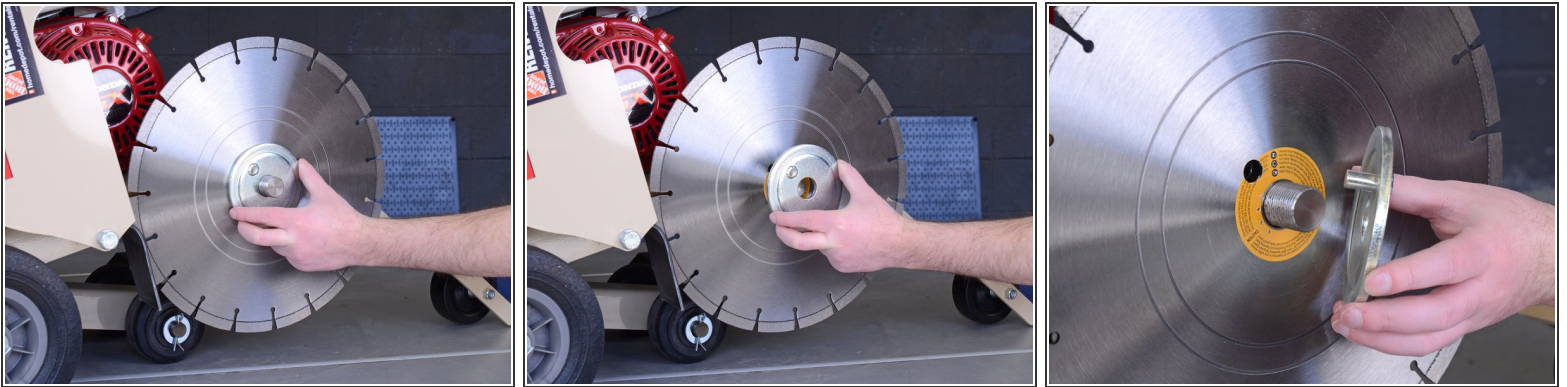
**⚠ Work slowly and take extra precautions when working around the exposed cutting blade.**

## Step 9



- Use the included wrenches to remove the jam nut securing the cutting blade to the arbor.
- ⓘ Use one wrench behind the blade to secure the arbor in place as you use the other wrench to remove the jam nut.
- ☑ The jam nut is accompanied by a lock washer. Be sure to retain it for reinstallation.

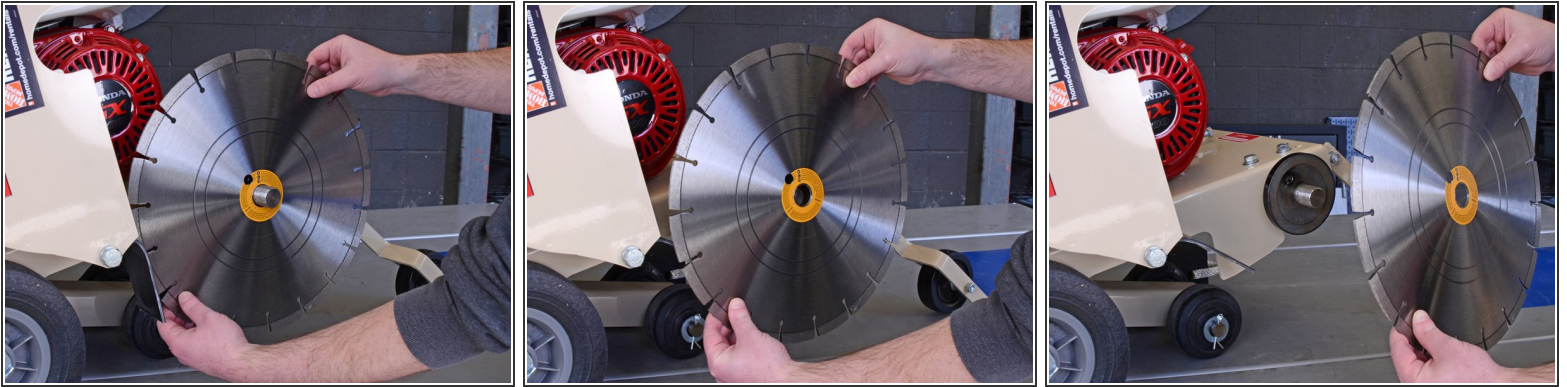
## Step 10



- Remove the blade cap.
- ☑ **Reassembly Tip:** Make sure the pin on the blade cap lines up with the holes on the blade and arbor.



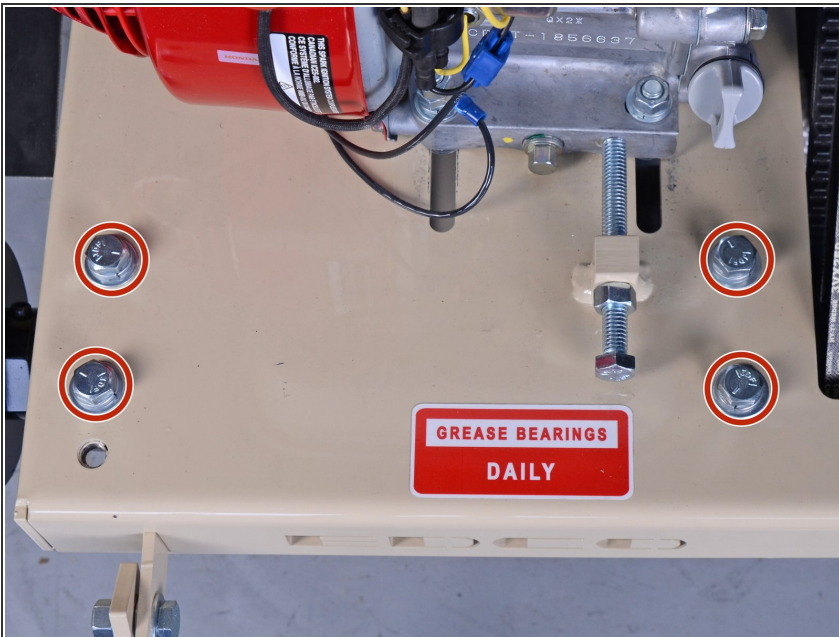
## Step 11



- Remove the blade from the arbor.

⚠ Use extreme care while removing the blade to avoid injury.

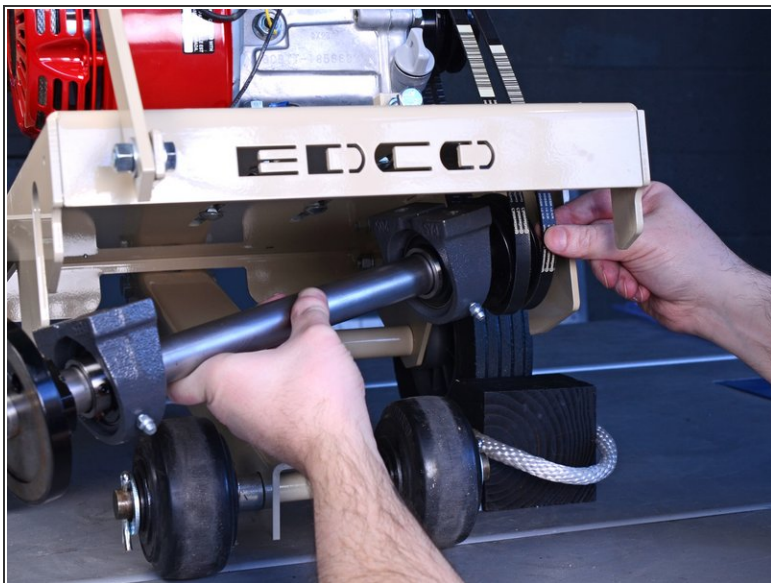
## Step 12



- Use a 9/16-inch wrench to remove the four bolts securing the arbor assembly to the concrete saw.



## Step 13




- Support the arbor assembly from the bottom and tilt the left side down to remove it from the belts.

## Step 14



- Remove the arbor assembly.

 **Reassembly Tip:** Reinstall a mounting bolt on the blade side to hold the arbor assembly in place. Then use a clamp to help line up the remaining mounting bolt holes, as the tension of the belts will make it difficult to do this by hand.

To reassemble your device, follow these instructions in reverse order.