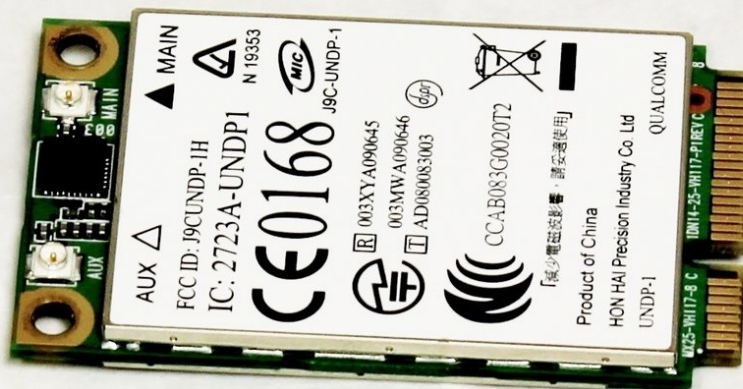




# HP Mini 311 WWAN Card Replacement

This installation guide will provide information on replacing the wireless card for an HP Mini 311.

Written By: Christian Santoyo



---

## INTRODUCTION

If you are having problems with internet connection, you may want to replace your wireless network card on your HP Mini 311.



### TOOLS:

- [Phillips #00 Screwdriver](#) (1)
-

## Step 1 — Battery



- Lay the laptop on a flat surface, bottom side up and slide the two battery release latches toward the outside of the case.

## Step 2




- Slide the battery away from the device to remove.

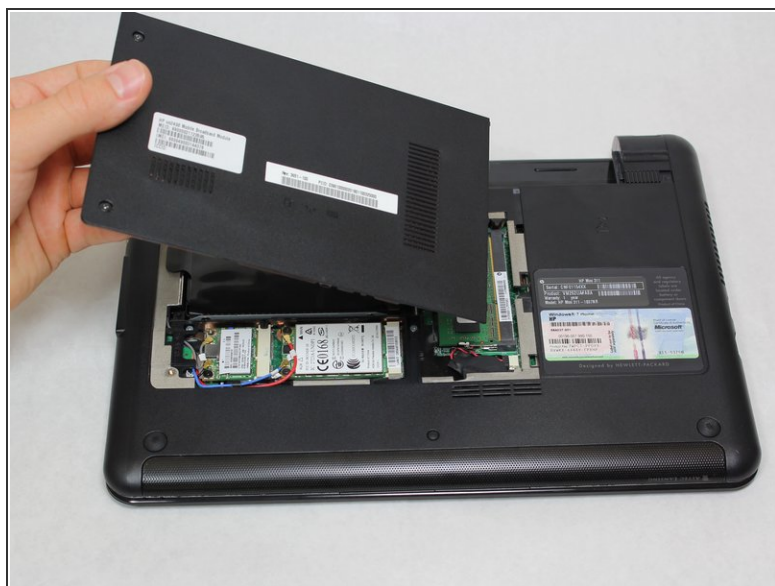
## Step 3 — Memory Shield



- With the device still in a bottom side up position, proceed to unscrew the two 4.8mm Phillips 00 screws from the memory shield.

 The screws will remain in the shield.

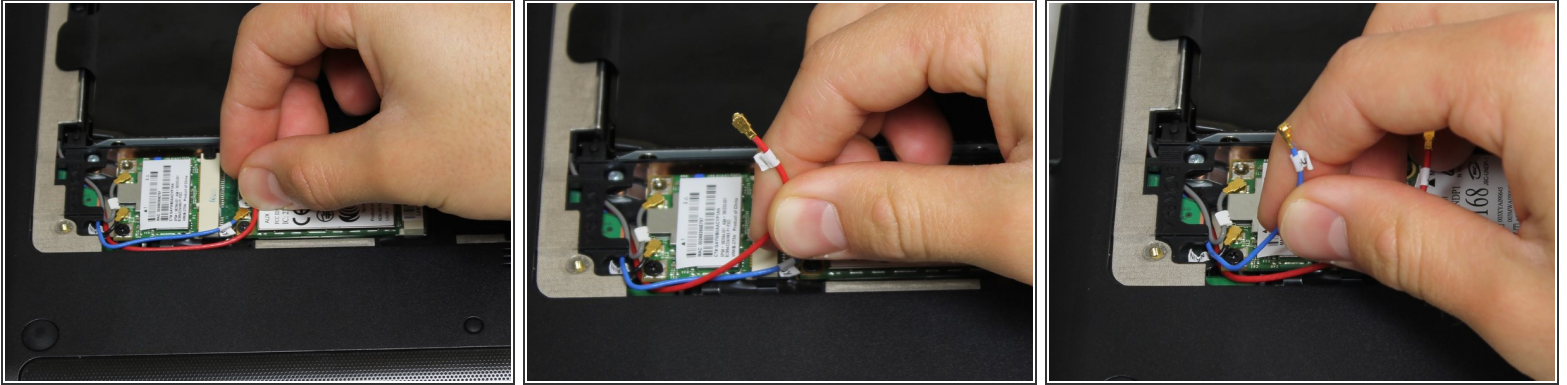
## Step 4



- Lift the memory shield up and remove from the laptop.



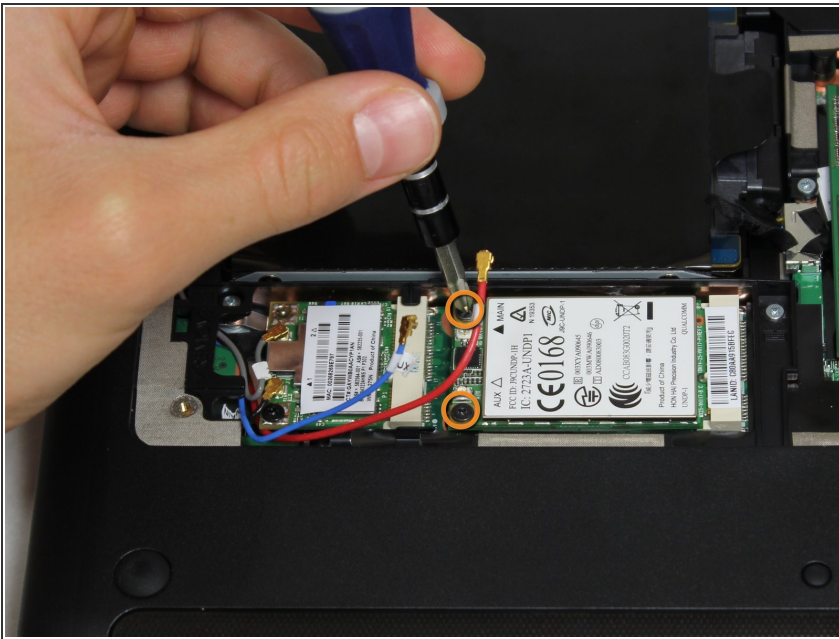
## Step 5 — WWAN Card



- Begin by removing the red and blue wires from the wireless card.

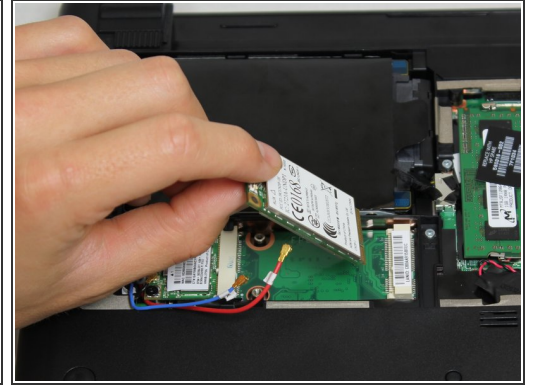
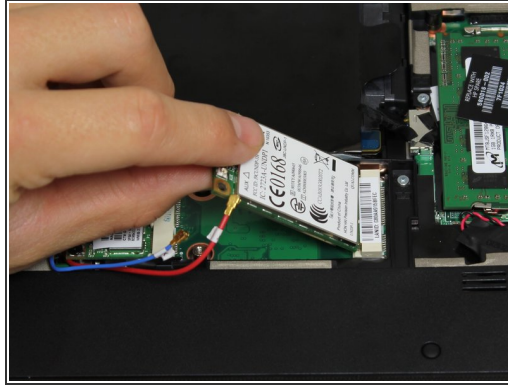
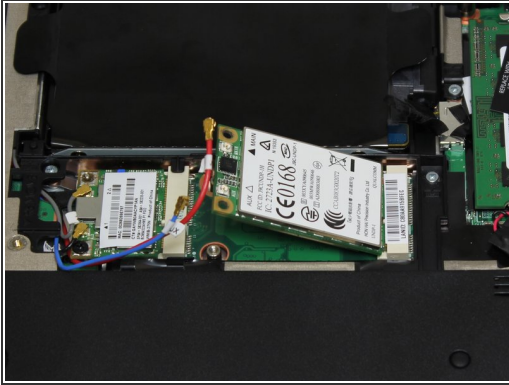
⚠ Gently remove to avoid damaging the ends of the wires.

## Step 6



- Remove the two Phillips 00 3.8mm screws attached to the wireless card.

## Step 7



- Lift up the unattached side of the wireless card and pull out to remove.

To reassemble your device, follow these instructions in reverse order.