



# Panasonic Lumix DMC-GX85 Viewfinder Replacement

How to replace a Panasonic Lumix DMC-GX85 viewfinder.

Written By: Kristen Gismondi





## TOOLS:

- [Phillips #0 Screwdriver](#) (1)
- [iFixit Opening Tool](#) (1)
- [Spudger](#) (1)

## Step 1 — Rear Cover



- Remove the plastic hot shoe cover by sliding it towards the rear of the camera.

## Step 2




- Using a spudger, gently lift the forward end of the shoe spring to disengage its locking mechanism.
- While holding the forward end of the shoe spring up, push from its lifted end to remove the shoe spring.

## Step 3



- Remove the two 6.0mm silver Phillips #0 screws closest to the display screen.

 Do not remove the two forward-most silver screws.

## Step 4



- Turn the camera so the side with the jack cover is facing you.
- Near the camera's top end, remove the 4.0mm black Phillips #0 screw on the bottom in this orientation.
- Open the jack cover and remove the 4.0mm black Phillips #0 screw inside.

## Step 5



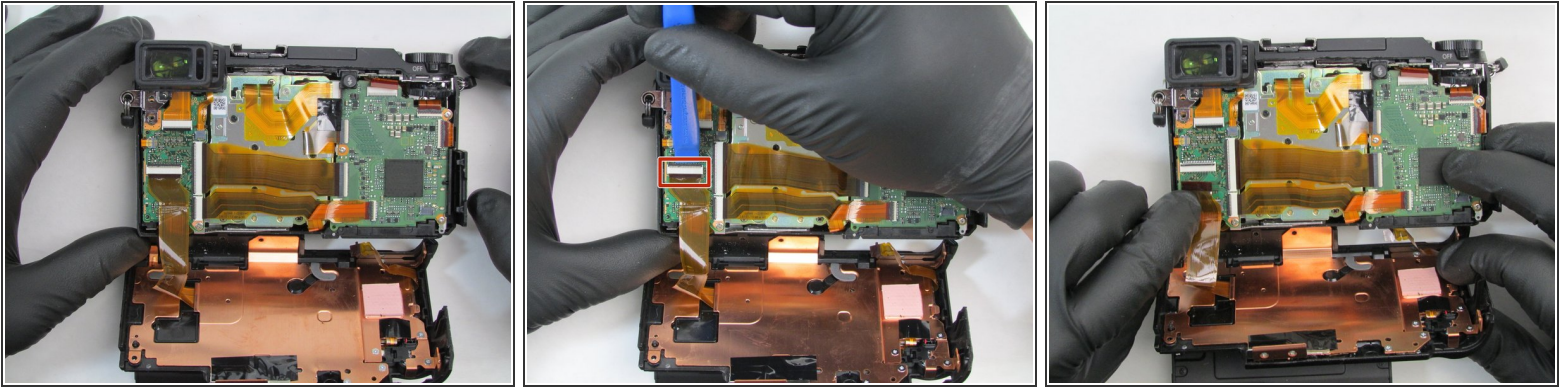
- Flip the camera upside down so the bottom of the camera is facing you.
- Remove the two center 2.5mm black Phillips #0 screws.
- Remove the outer 4.5mm black Phillips #0 screw.

## Step 6



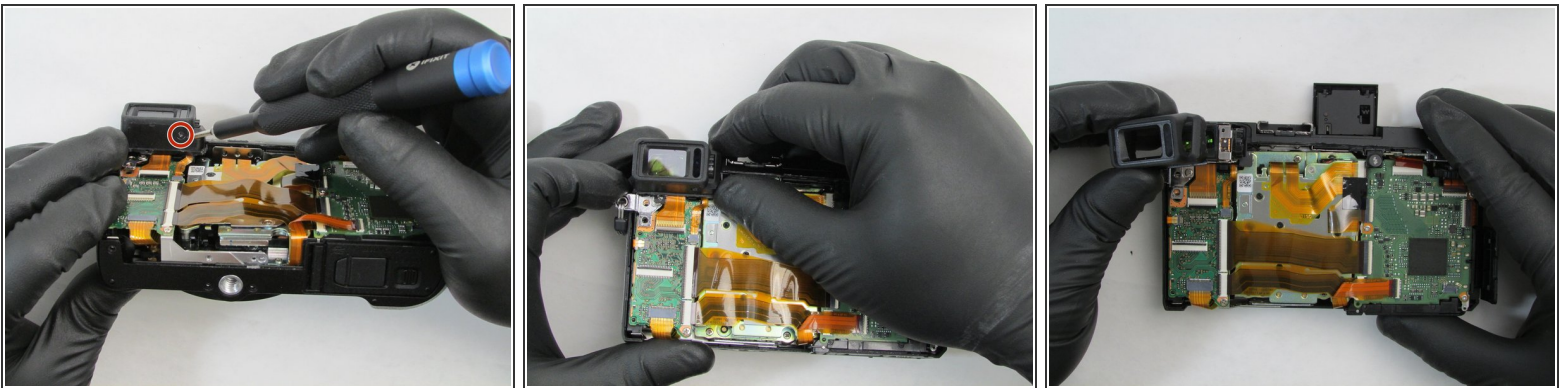
- Turn the camera so the display screen is facing you.
  - Rotate the top of the screen away from the camera body to access and remove the 4.5mm black Phillips #0 screw.
  - Remove the rear camera cover by gently pulling from the top side.
- i** When removing the rear cover, pull apart slowly to prevent damaging the ribbon cable connecting the display screen and the Sub PCB.

## Step 7



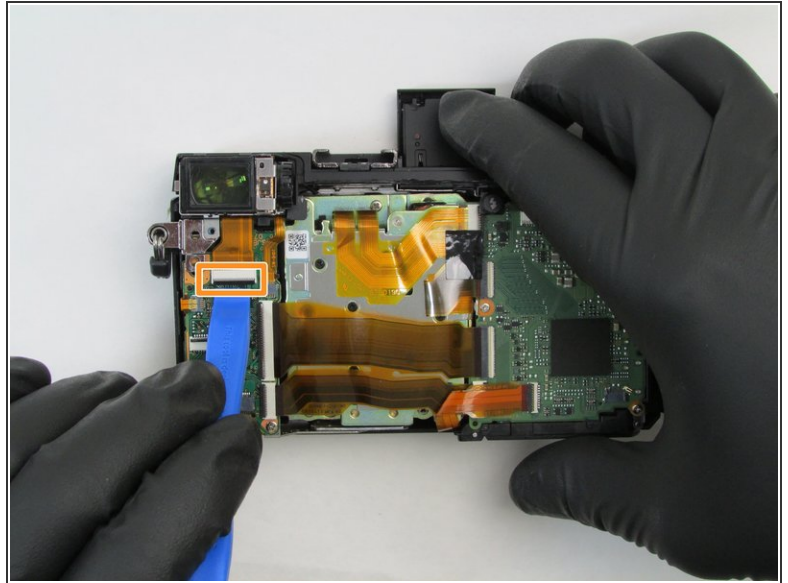
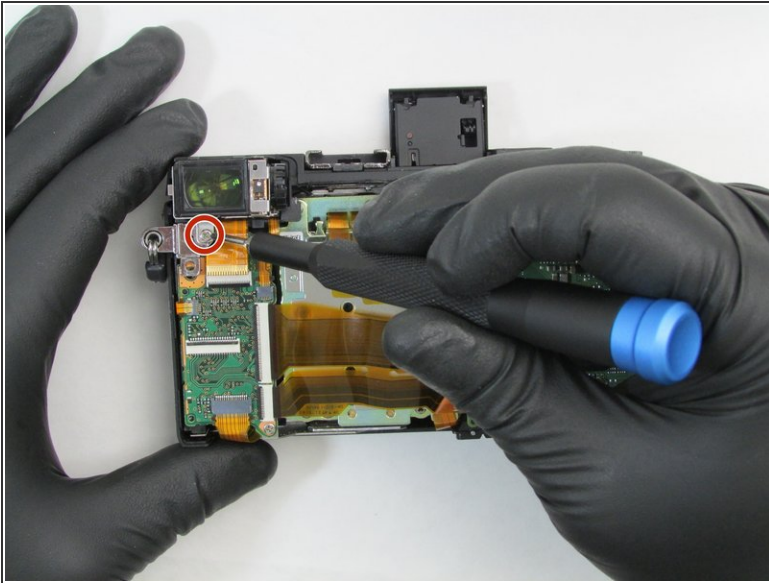
- Turn the camera so the lens is facing down with the rear cover pulled back.
  - Disconnect the ribbon cable from the camera by pulling up on the black locking tab with an iFixit opening tool.
  - Pull the ribbon cable from the connector. The rear cover is now completely detached from the camera.
- i** Do not bend the ribbon cable excessively and take care not to damage the ribbon cable.

## Step 8 — Viewfinder



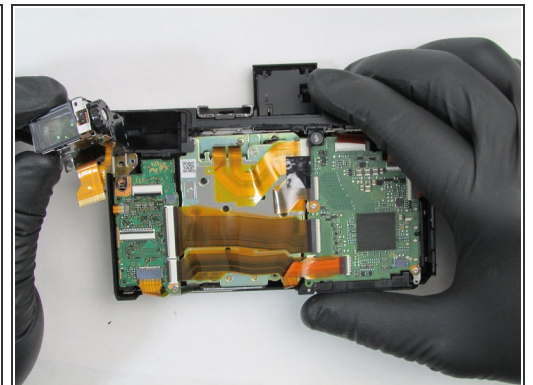
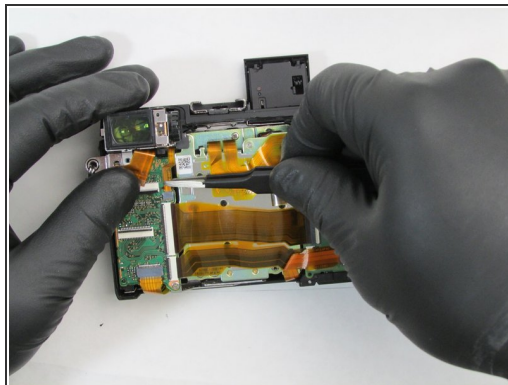
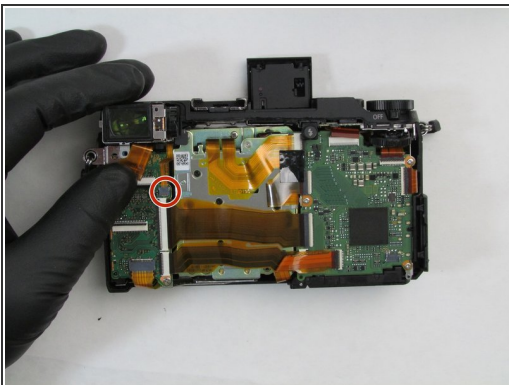
- Remove the 4.5mm black Phillips #0 screw under the viewfinder.
- Gently pull the viewfinder cover from the camera.

## Step 9



- Remove the 2.5mm silver Phillips #0 screw located below the viewfinder.
- Remove the ribbon cable from the underside of the camera by unlatching the black locking tab with an iFixit opening tool then pulling the ribbon away from the connector.
- ⓘ Do not bend the ribbon cable excessively and take care not to damage the ribbon cable.

## Step 10



- Remove the small ribbon cable by gently pulling it away from the camera with ESD safe tweezers.
- Remove the viewfinder from the camera body.

To reassemble your device, follow these instructions in reverse order.