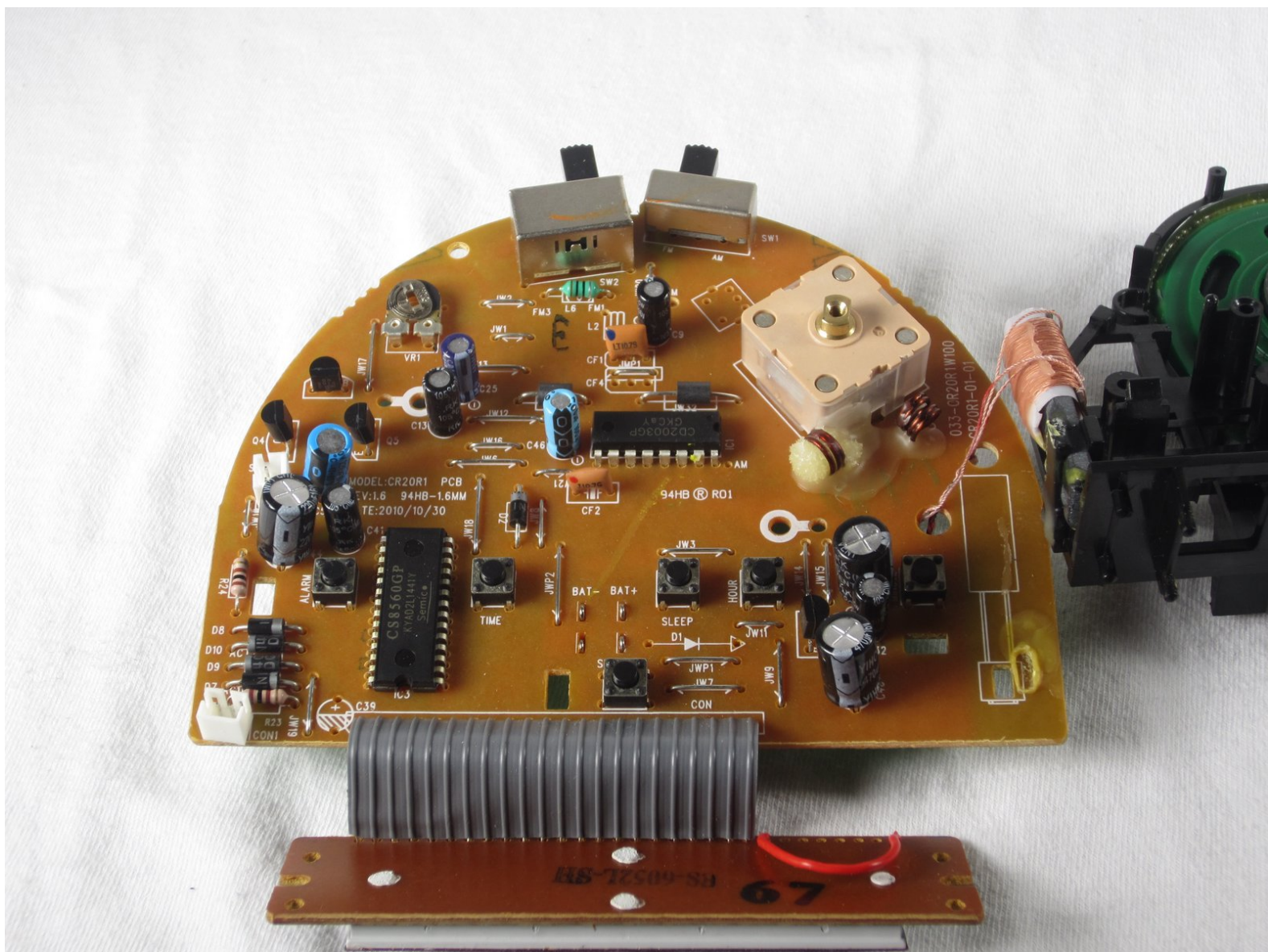




Venturer CR20 Volume Wheel Replacement

Replace your volume wheel to restore your ability to listen to a variety of radio stations at different volumes.

Written By: Robert Myers



INTRODUCTION

In this guide, you will learn how to remove and install the volume wheel of your alarm clock. The process consists of removing the front screen, followed by taking the hardware out of the housing and detaching the power cord. The following step consists of removing the top plastic from the motherboard, being sure to not fully remove the two.



TOOLS:

- [Phillips #0 Screwdriver](#) (1)
-

Step 1 — Front Screen



- On the bottom of the clock locate and unscrew the single 2mm Phillips screw from bottom of the clock.

Step 2



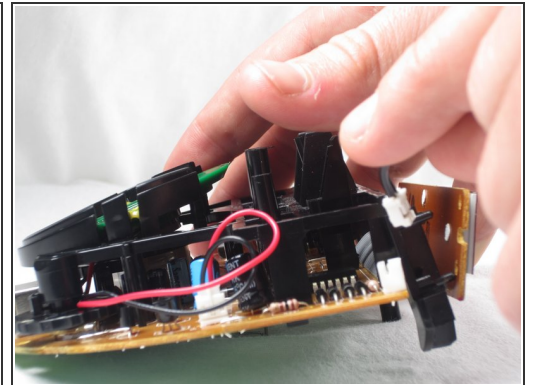
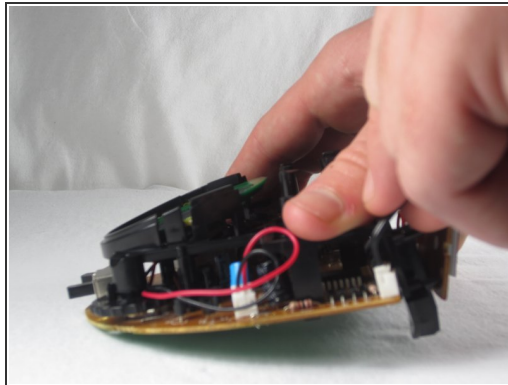
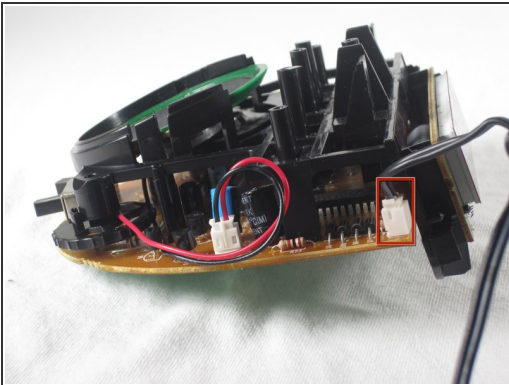
- Using a moderate amount of force, position the screwdriver in the crack between the front screen and the main body of the clock (as shown) and push the screen away from the main body of the clock.

Step 3 — Power Cord



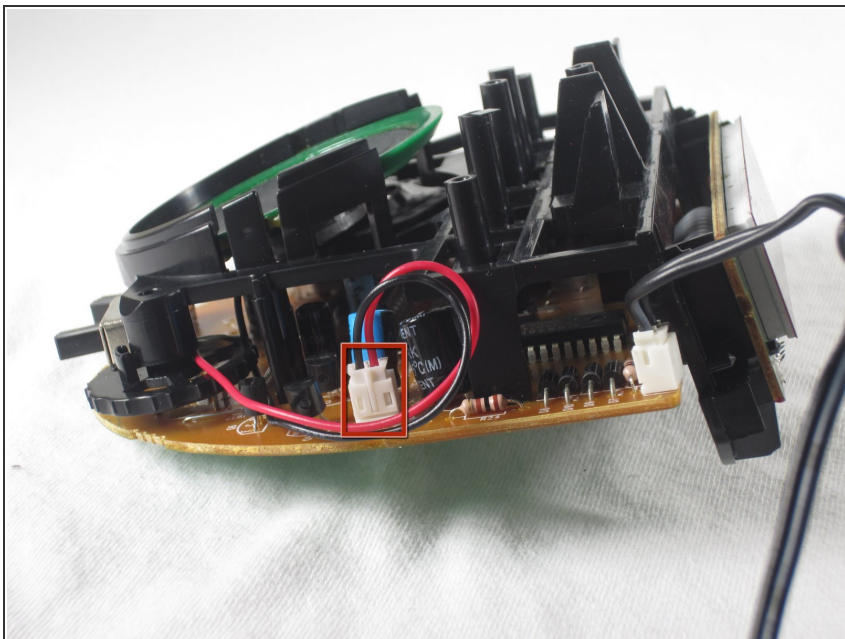
- Get a firm grip on the outside of the clock and a firm grip on the hardware on the inside of the the clock like so and pull the hardware out from the outside of the clock.

Step 4



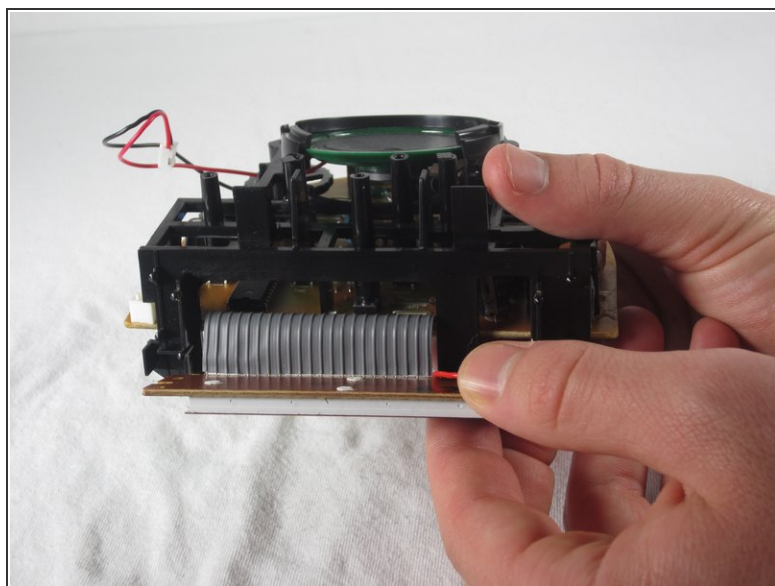
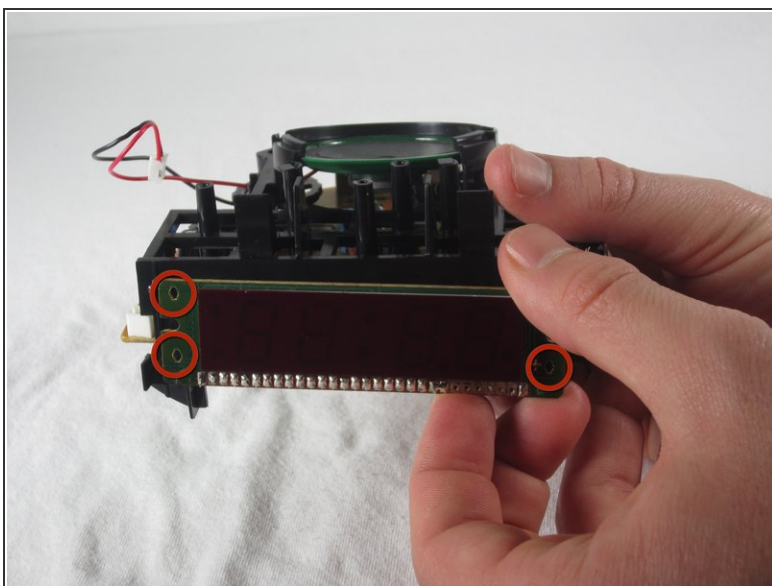
- Using your fingers, pull the power cord connector, outlined in the picture with a red rectangle straight up to disconnect from the alarm clock.

Step 5 — Tuner Wheel



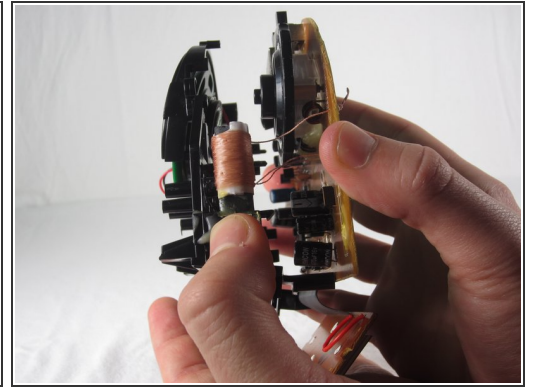
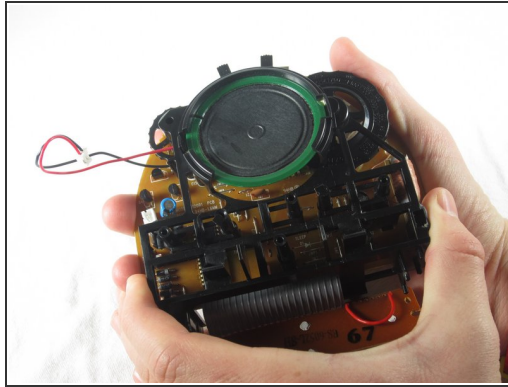
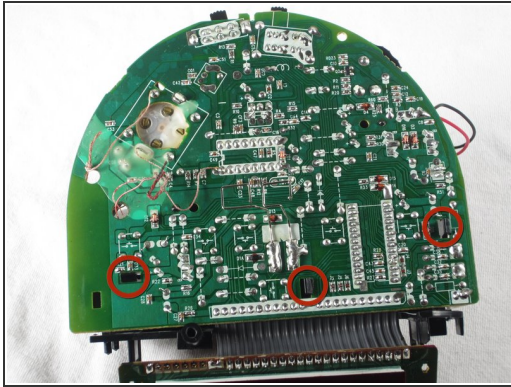
- Just as before, pull the speaker plug directly up to remove the plug from the motherboard.

Step 6



- Applying a bit of pressure at each of the contact points (illustrated by red circles), disconnect the display from the plastic housing.

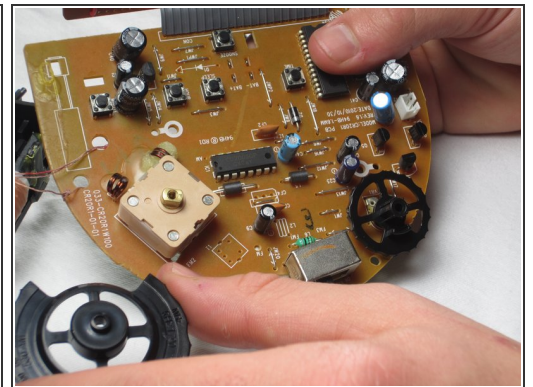
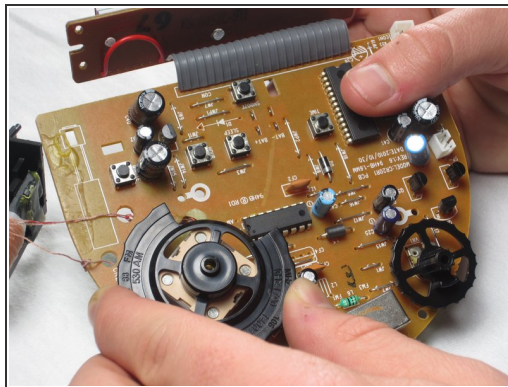
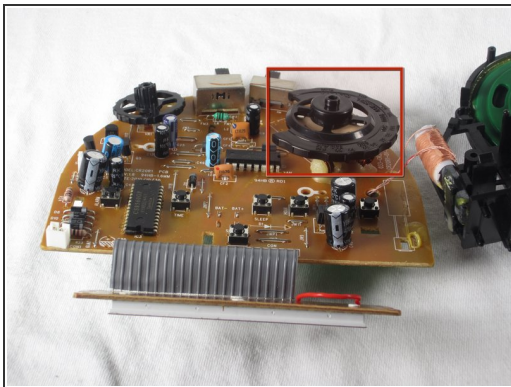
Step 7



⚠ Do not pull the plastic frame and motherboard apart too hard or the motherboard and plastic frame will not go back together.

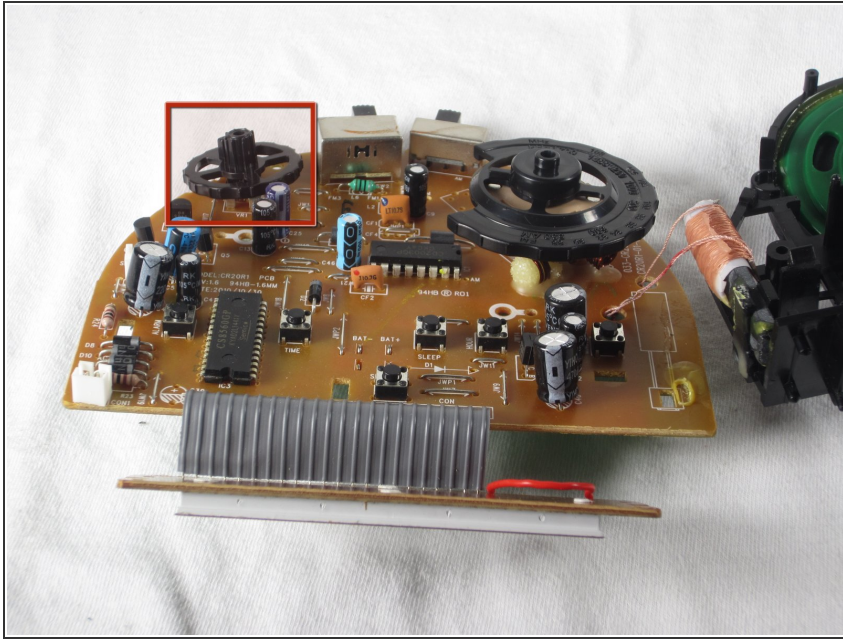
- Flip the motherboard over and push in each of the black clips to disconnect the plastic frame from the motherboard.
- Proceed to remove the plastic frame gently, being cautious to not fully break the two apart.

Step 8



- Gently, pull the tuner wheel up and away from the motherboard.

Step 9 — Volume Wheel



- Gently, pull the volume wheel up and away from the motherboard.

To reassemble your device, follow these instructions in reverse order.