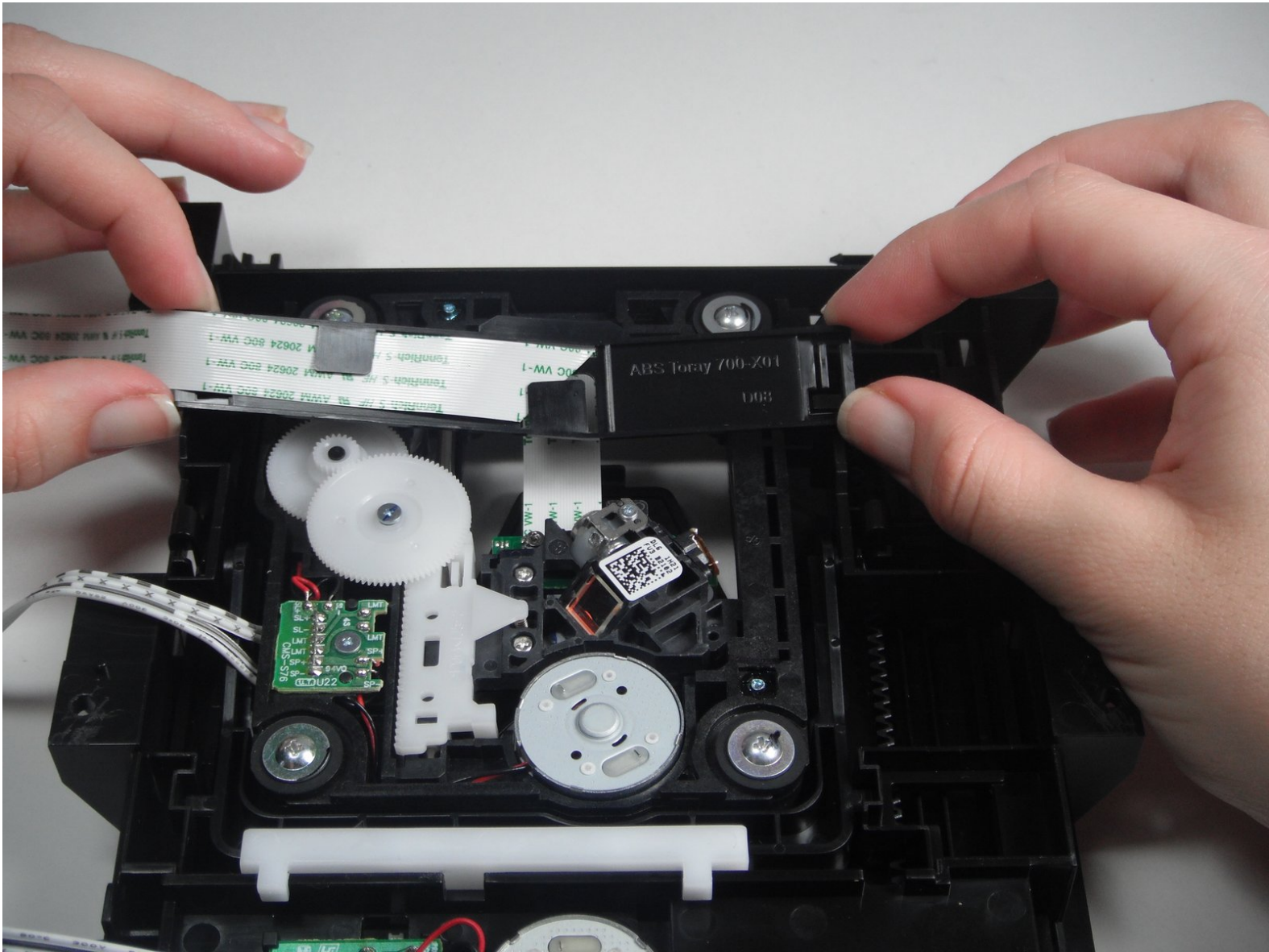




Sony DVP-SR200P DVD Reader Replacement

This guide demonstrate how to replace a malfunctioning DVD reader.

Written By: Jose Coronel



INTRODUCTION

By removing the DVD reader you will be able to install a new reader.



TOOLS:

- [Phillips #1 Screwdriver](#) (1)
-

Step 1 — Top Cover



- Remove the five #1 Phillips screws (black, 3/16") attaching the cover to the DVD player.
 - One 3/16" screw on the right side of the DVD player.
 - One 3/16" screw on the left side of the DVD player (directly opposite of other screw).
 - Three 3/16" screws on the back of the DVD player.

Step 2



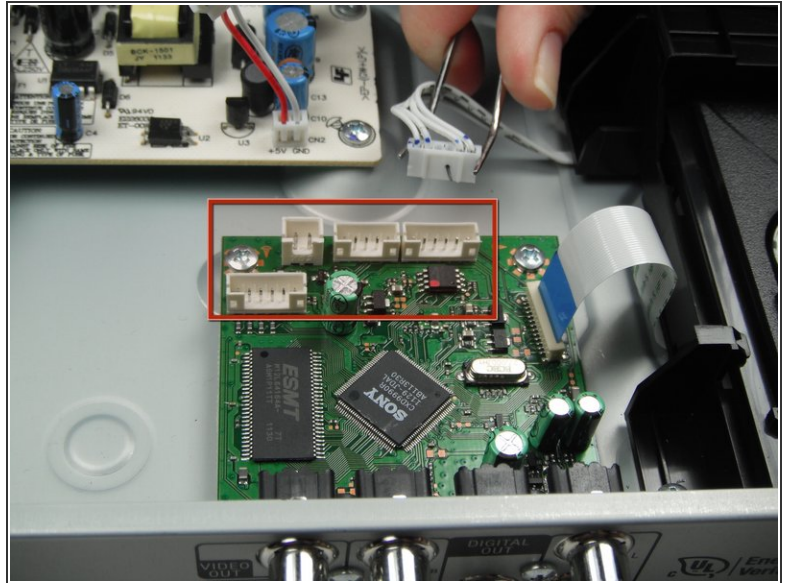
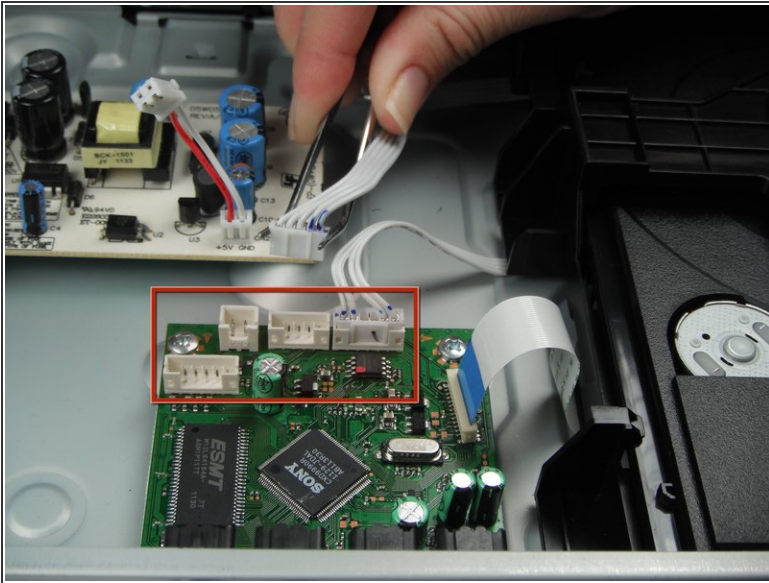
- Slide the cover away from the front of the DVD player until it is off.

Step 3 — Processing Board



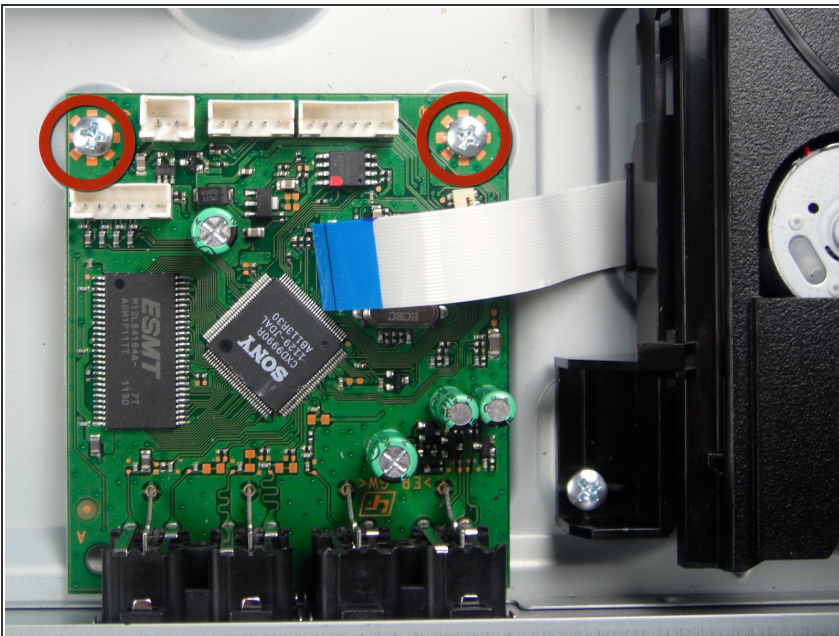
- Remove the blue tape from the processing board by gently pulling upward.

Step 4



- Use the tweezers to remove the four sets of wires connected to the processing board. Start with the cord located in front of the row of three cords.
- ⓘ The wires may be difficult to remove. Wiggling them while lifting them up may help remove them.

Step 5



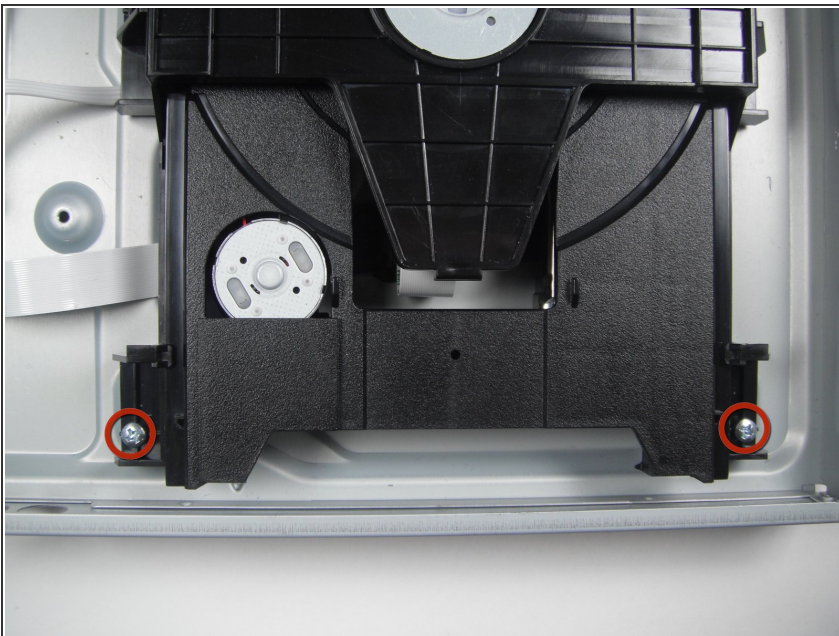
- ⚠ Handle the processing board with care. It is fragile.
- Unscrew the two #1 Phillips screws (silver, 3/16") located on the two edge corners of the processing board.

Step 6



- Orient the DVD player so that you are facing the video and audio jacks.
- Unscrew the two #1 Phillips screws (silver, 3/16") located on the outside of the DVD player
- ❗ The processing board is now free to be removed and replaced.

Step 7 — DVD Drive



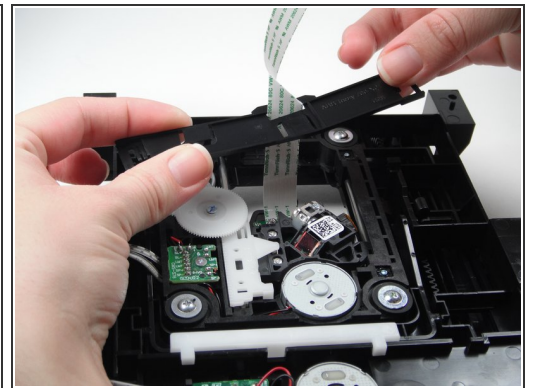
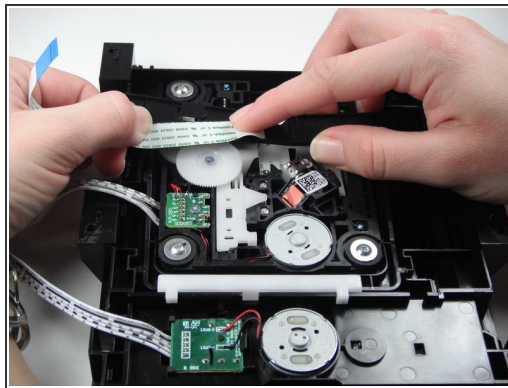
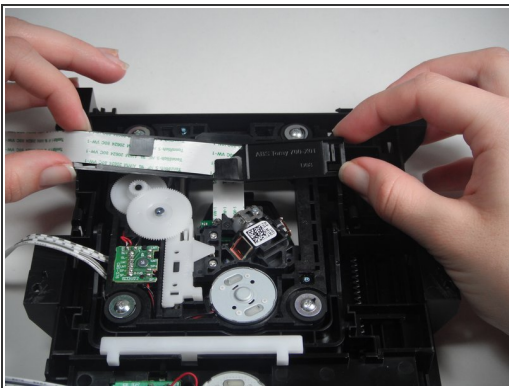
- Orient the DVD player so the front of the DVD player is opposite of you.
- Remove the two #1 Phillips screws (silver, 3/16") that attach the DVD drive to the bottom of the DVD player.

Step 8



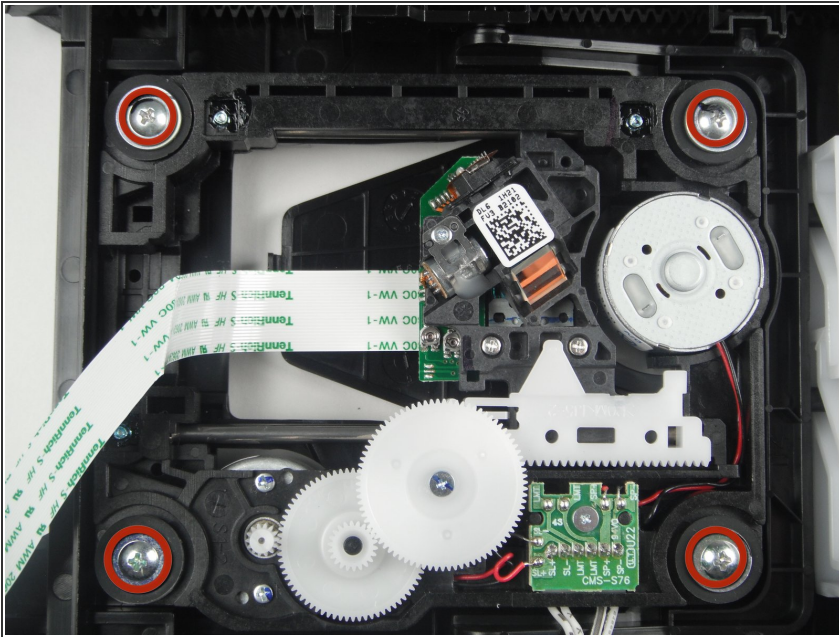
- Remove the DVD drive by pulling it backward and upward while ensuring that it is free of any braces.

Step 9 — DVD Reader



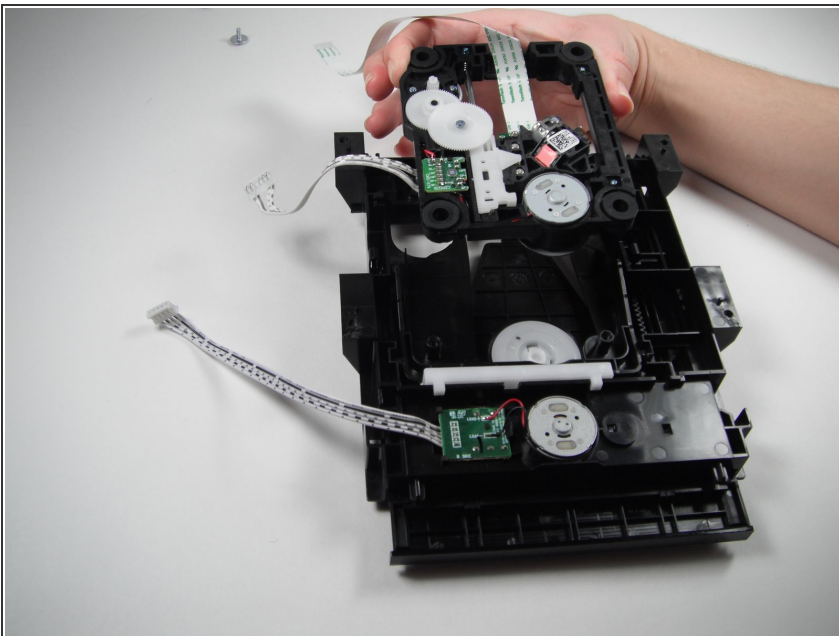
- Flip the DVD drive upside down, to match the orientation of the first picture.
- Carefully remove the white ribbon cable from the brace holding it in place by sliding it out towards you.
- Next remove the brace from the DVD drive. Carefully wiggle and pull the brace upward as the white ribbon cable slides out through the brace.

Step 10



- Remove the four silver #1 Phillips 3/16" screws to free the DVD reader from the DVD drive.

Step 11



- Remove the DVD reader from the DVD drive by pulling it upwards off of the drive.
- ❗ The DVD reader can now be replaced.

To reassemble your device, follow these instructions in reverse order.