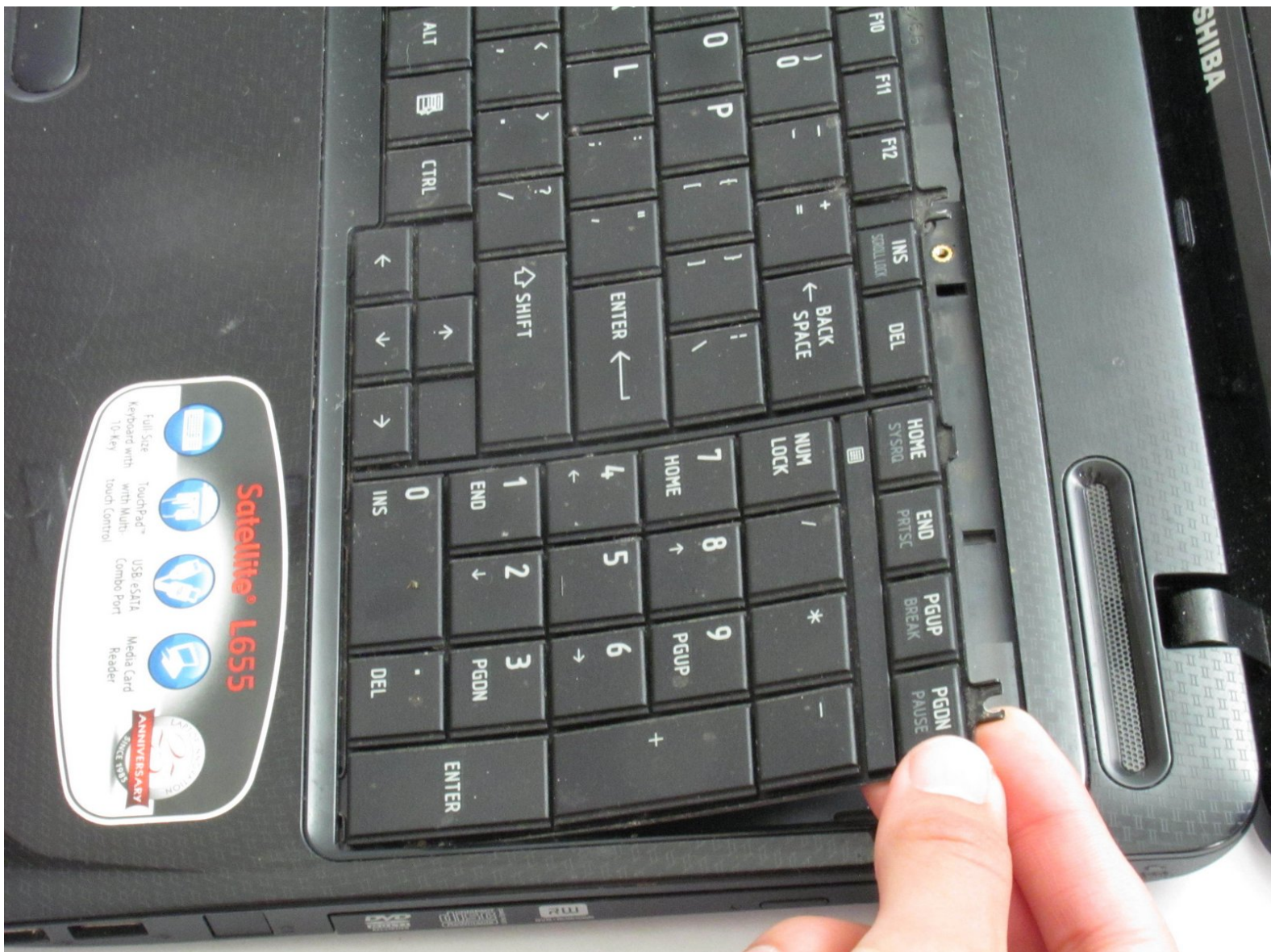




Toshiba Satellite L655D-S5095 Keyboard Replacement

Replace your Toshiba Satellite's undersized space bar and the rest of your keyboard.

Written By: Jerry Wakai



INTRODUCTION

Replacing the keyboard is an intermediate level repair. Following the instructions carefully will help you successfully replace your keyboard.



TOOLS:

- [Phillips #1 Screwdriver](#) (1)
 - [iFixit Opening Tools](#) (1)
-

Step 1 — Battery



- Locate the battery locks on the bottom of the laptop.
- Slide the right lock outwards, until it locks into place.
- Slide and hold the left lock outwards and hold it in place.

Step 2



- While holding the lock in place, slide the battery out towards you.

Step 3 — Keyboard



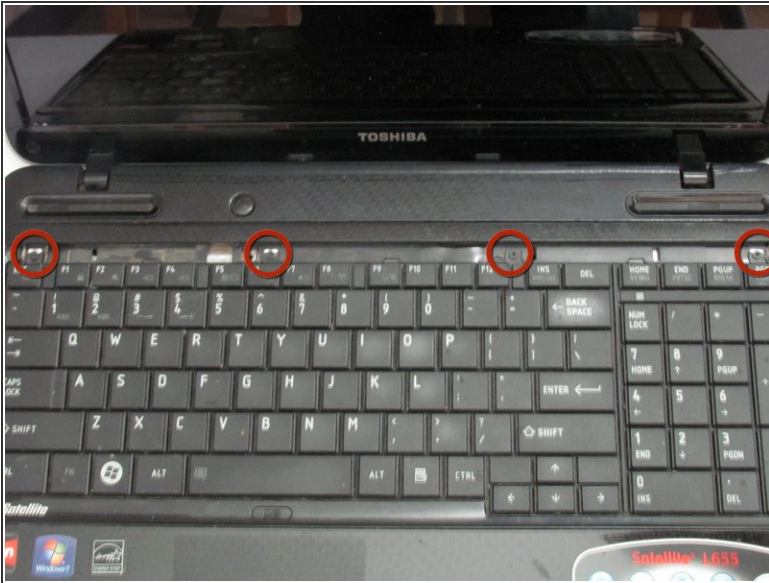
- Using a #1 Phillips screwdriver, remove the 5.8 mm screw in the battery slot.

Step 4



- Use a plastic opening tool to pry off the plastic panel above the keyboard.

Step 5



- Unscrew the four 3.7 mm screws at the top of the keyboard using a #1 Phillips screwdriver.

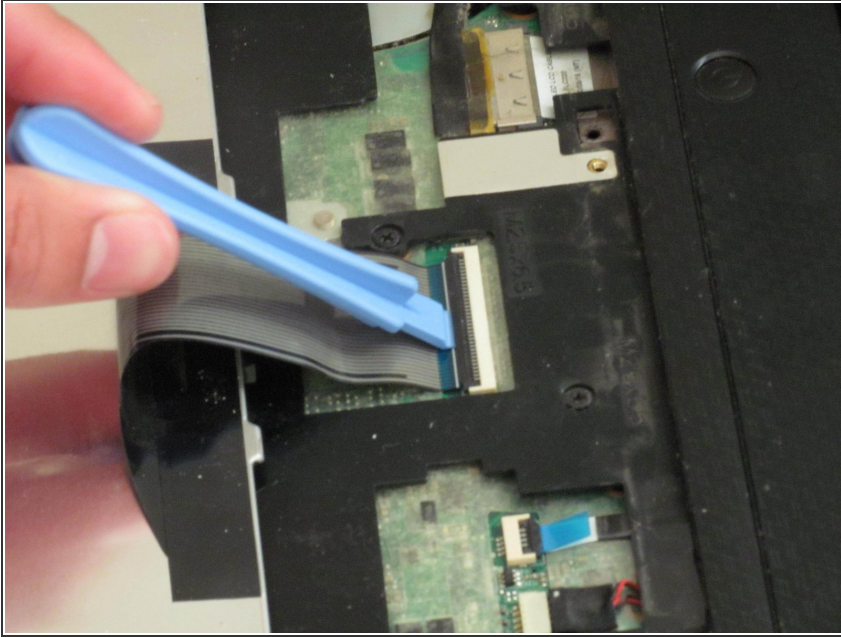
Step 6



- Slowly lift the keyboard out, up and towards the screen.

⚠ Do not try to remove the keyboard completely because it is still attached to the motherboard.

Step 7



- Using a plastic opening tool, flip the ZIF connector up to release the ribbon and the keyboard.

To reassemble your device, follow these instructions in reverse order.