



SR405QM Battery Replacement

Follow this guide to remove a dead battery and...

Written By: Chris Pittner



INTRODUCTION

Follow this guide to remove a dead battery and replace it with a new one.



TOOLS:

- [Phillips #2 Screwdriver](#) (1)
-

Step 1 — Battery



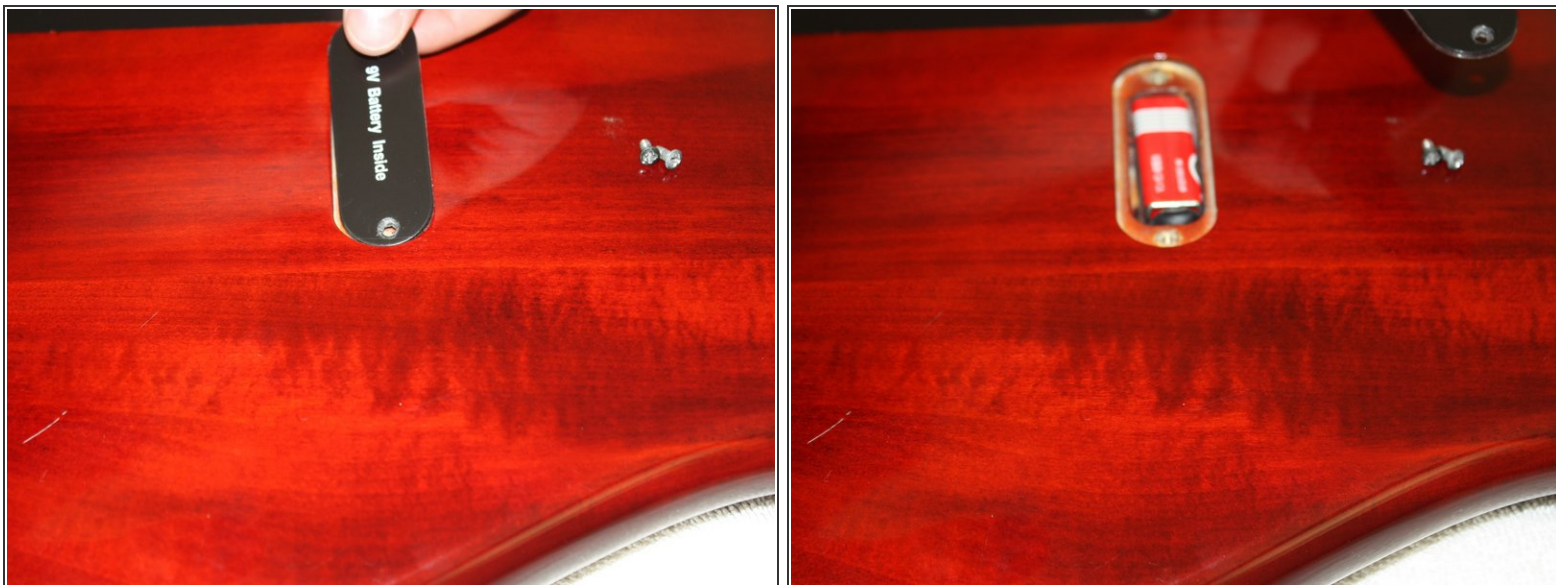
- Gently place the instrument upside-down on a soft surface.
- Locate the battery cavity cap and screws.

Step 2



- Use a Phillips #2 head screwdriver to unscrew both screws. Two #1 1mm long screws.

Step 3



- Remove the cap by lifting upwards to reveal the battery.

Step 4



- Gently lift the battery from the cavity.
- Detach the battery completely by firmly pulling the fabric connector from the conducting end of the battery.

To reassemble your device, follow these instructions in reverse order with a fresh battery.