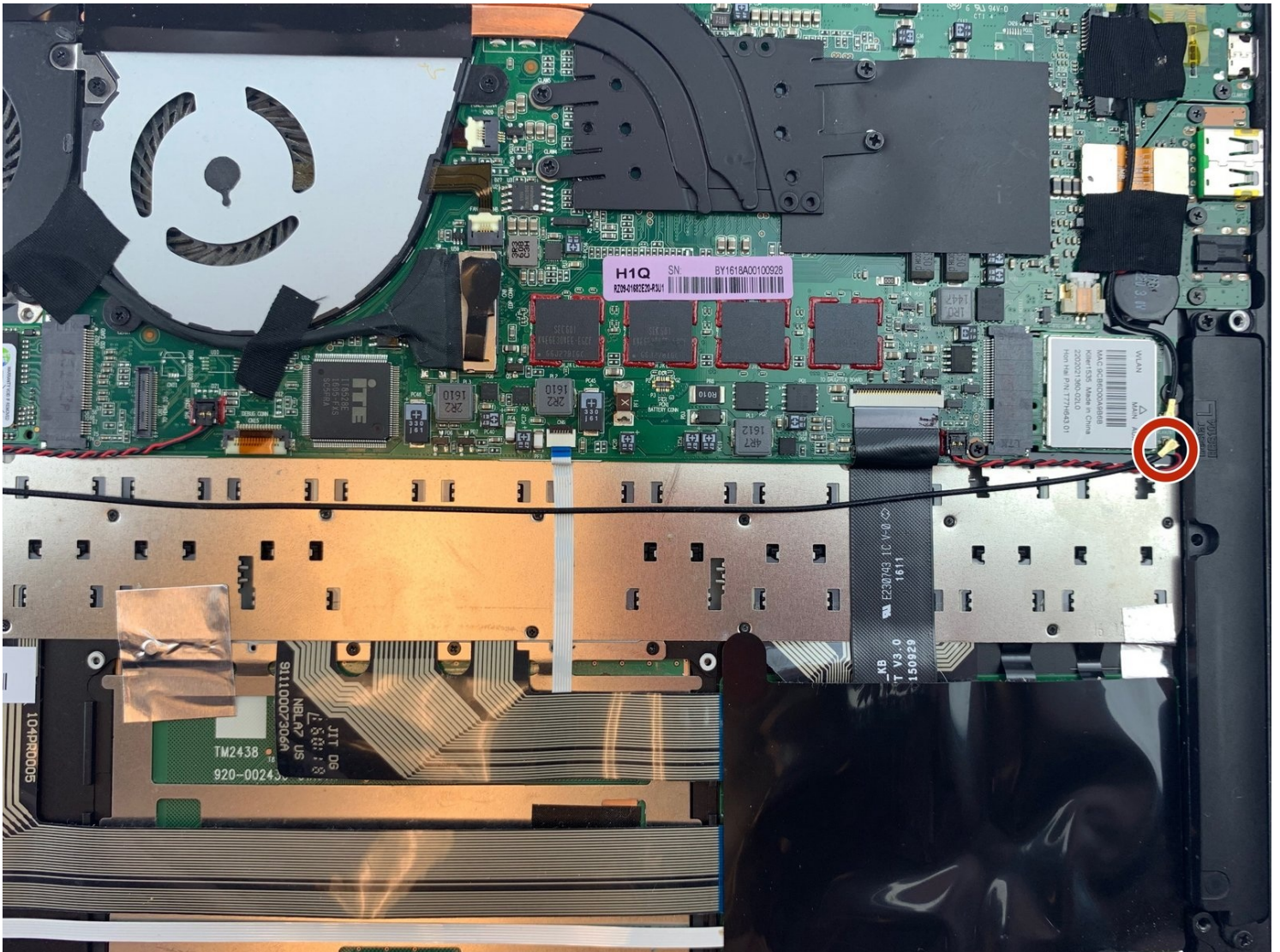




Razer Blade Stealth 2016 Killer 1535 Wireless Card Replacement

Having a stable connection to the internet is...

Written By: Kaitlyn Murray



INTRODUCTION

Having a stable connection to the internet is essential for computer gaming as well as day to day use. Without a working wireless card, your system will not be able to support such a connection which can in turn be a very large inconvenience. This guide will walk you through all of the steps necessary to replace the Killer 1535 Wireless Card in your Razer Blade Stealth 2016 and get it back to working condition.

Before beginning the guide, be sure to power off your computer and disconnect from the charging cable.

TOOLS:

[T5 Torx Screwdriver](#) (1)

[iFixit Opening Tool](#) (1)

[T4 Torx Screwdriver](#) (1)

[Phillips #00 Screwdriver](#) (1)

Step 1 — Battery



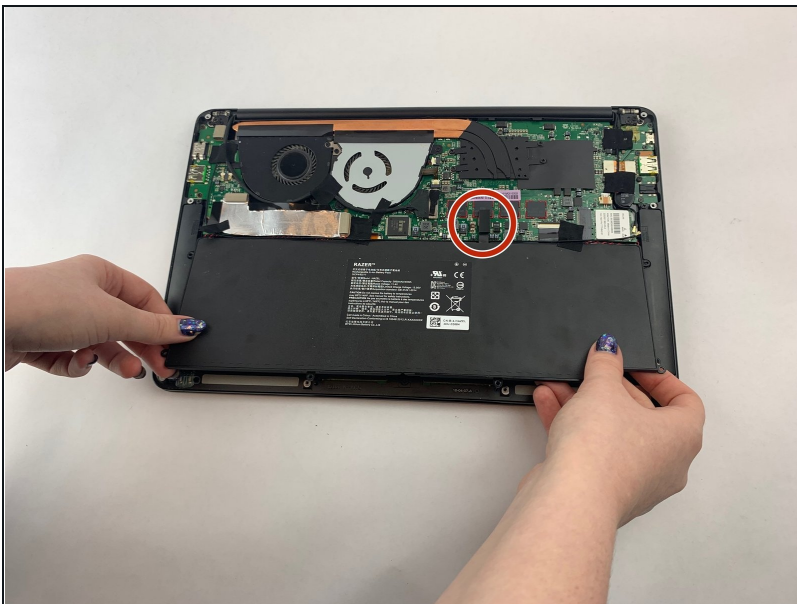
- Use a Torx screwdriver to remove the eight 3 mm screws on the back case.
- Remove the rear cover by prying up lightly starting in one of the corners.

Step 2



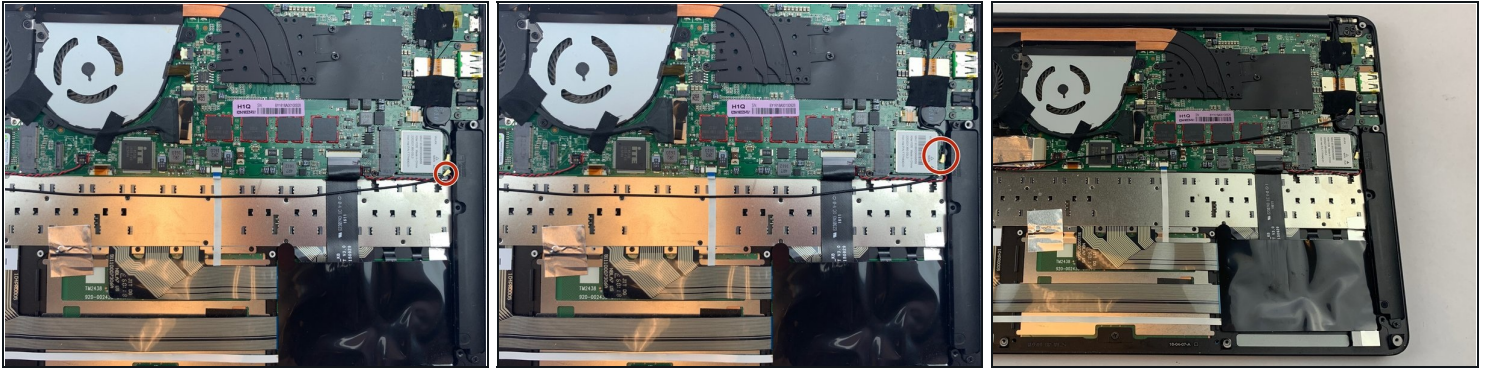
- Use a Phillips screwdriver to remove the six screws securing the battery.

Step 3



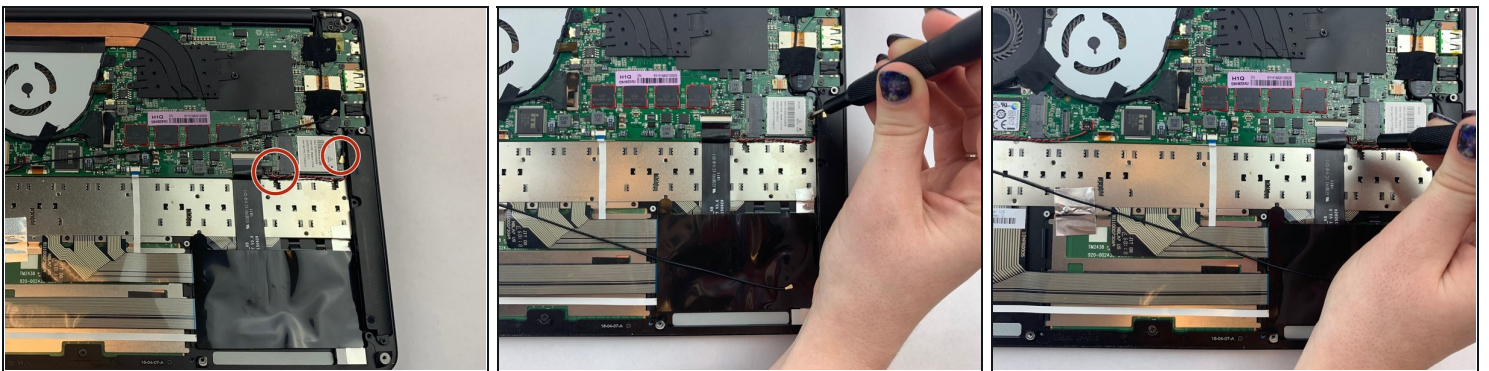
- Unplug the battery connector from the motherboard.
- Remove the battery from the device.

Step 4 — Killer 1535 Wireless Card



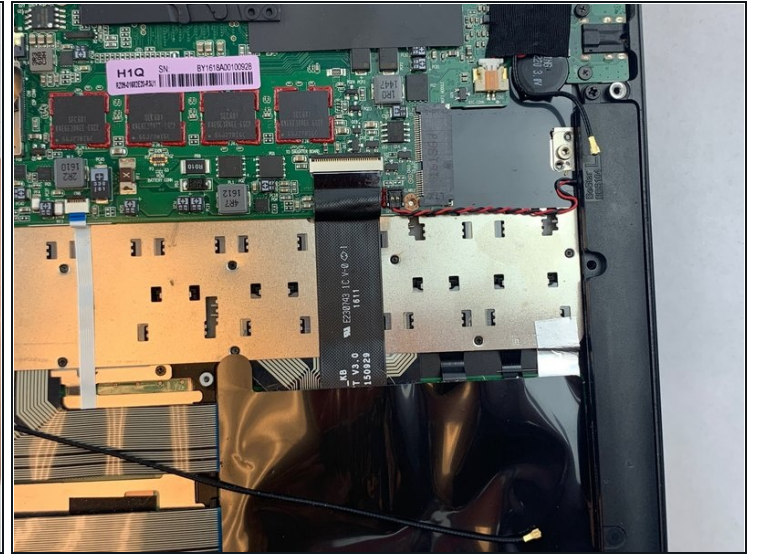
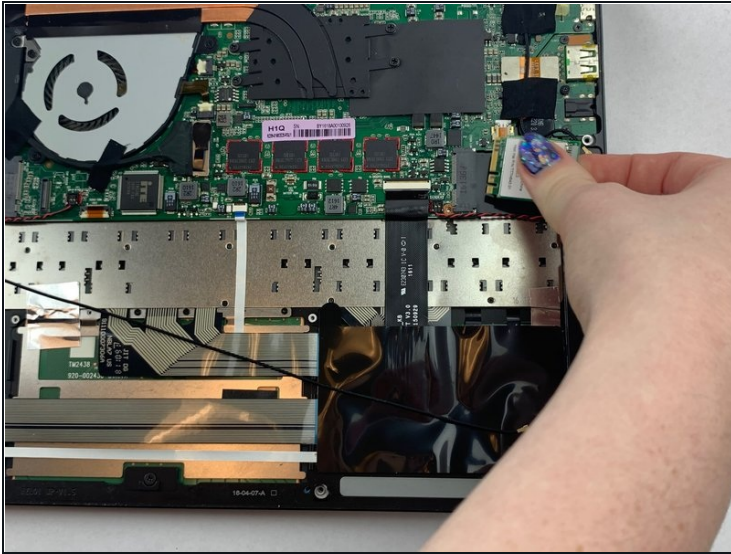
- Carefully remove the auxiliary and main wire from the Killer 1535 wireless card.

Step 5



- Use a Phillips #00 screwdriver to remove the two 2.61 mm screw holding the card in place.

Step 6



- Carefully remove the card.

To reassemble your device, follow these instructions in reverse order.