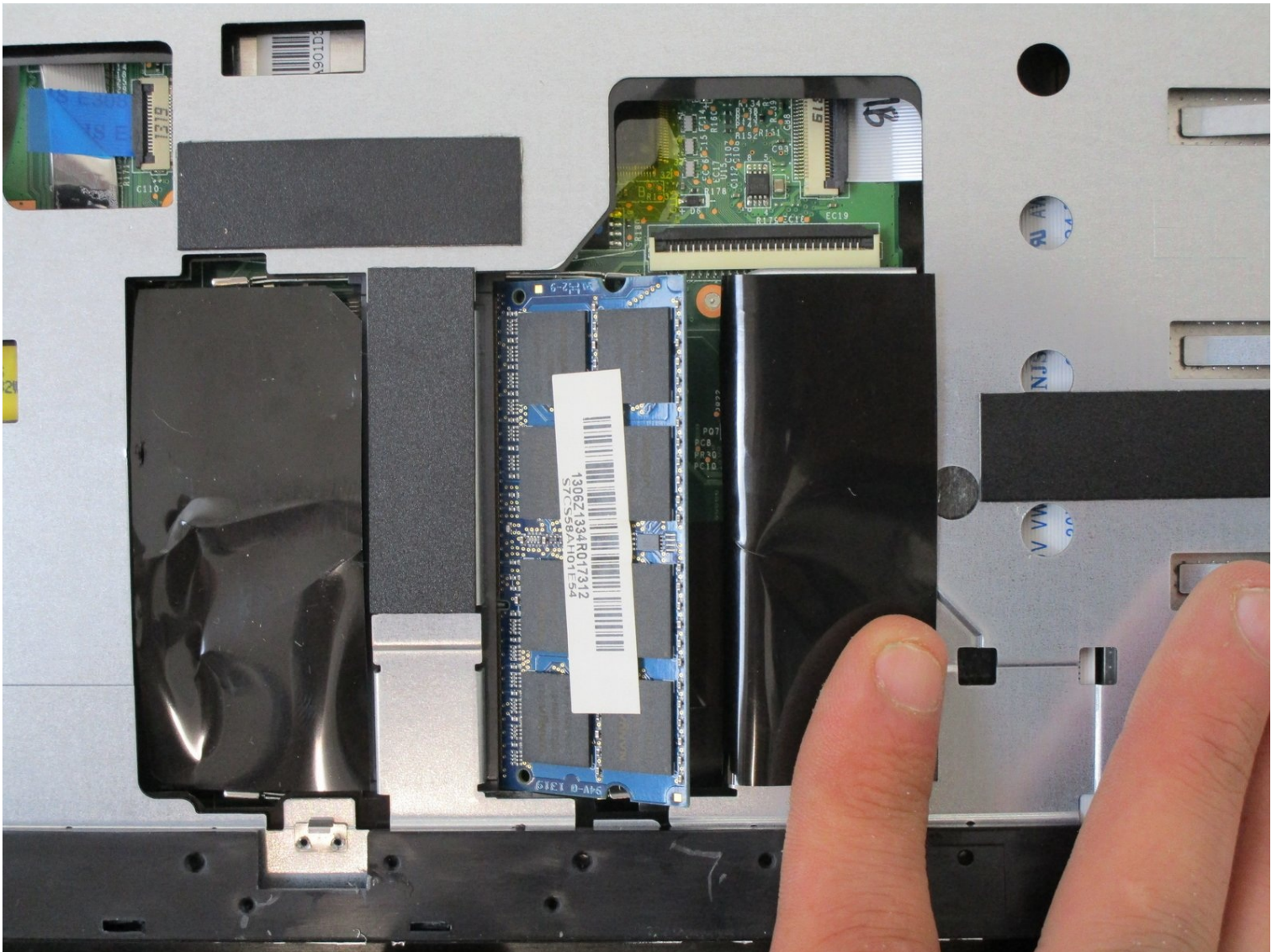




MSI GT70 MS-1763 RAM Replacement

If your MSI GT70 MS-1763 has memory issues —...

Written By: Brad Dunlap



INTRODUCTION

If your MSI GT70 MS-1763 has memory issues – undetected RAM, memory crashes, startup failure, or simply running out of memory – this guide will provide instructions for replacing the RAM.

Before using this guide, be sure the computer issues are related to the RAM. If you are having random crashes, boot your computer in safe mode and see if the issue persists. There is also software such as MemTest86 which diagnoses your computer's RAM to confirm the issue is related to the RAM.

Before beginning, make sure to completely power off your device and disconnect it from the charger.



TOOLS:

Jimmy (1)

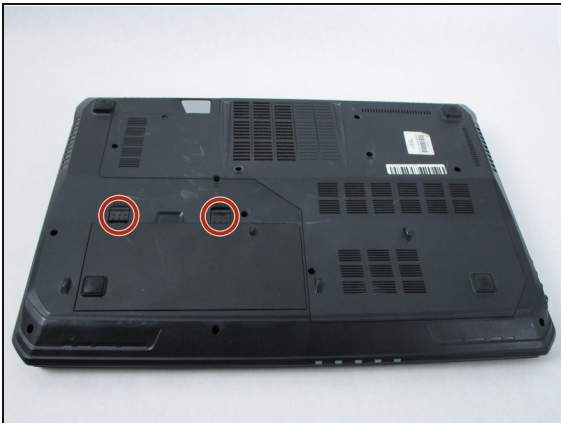
Phillips #0 Screwdriver (1)

Step 1 — Battery



- Power off the laptop and turn it over.

Step 2



- Release the safety latches that hold the battery in place. The left latch will stay moved up, while the right side is spring activated and will have to be held.

Step 3



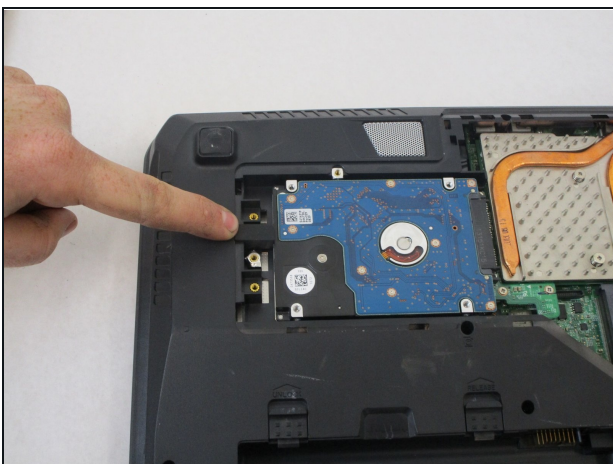
- While holding up the left latch, use a Jimmy and slide the old battery out of its compartment.

Step 4 — Hard Drive



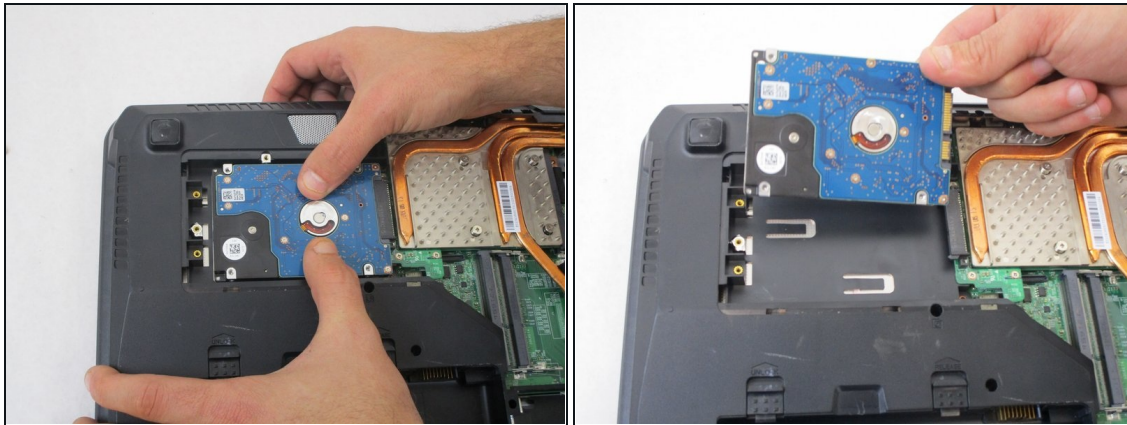
- Remove all twelve 4 mm Phillips #0 screws from the back of the laptop.
- Remove the back cover.

Step 5



- Remove the rubber spacer holding the hard drive secure.

Step 6



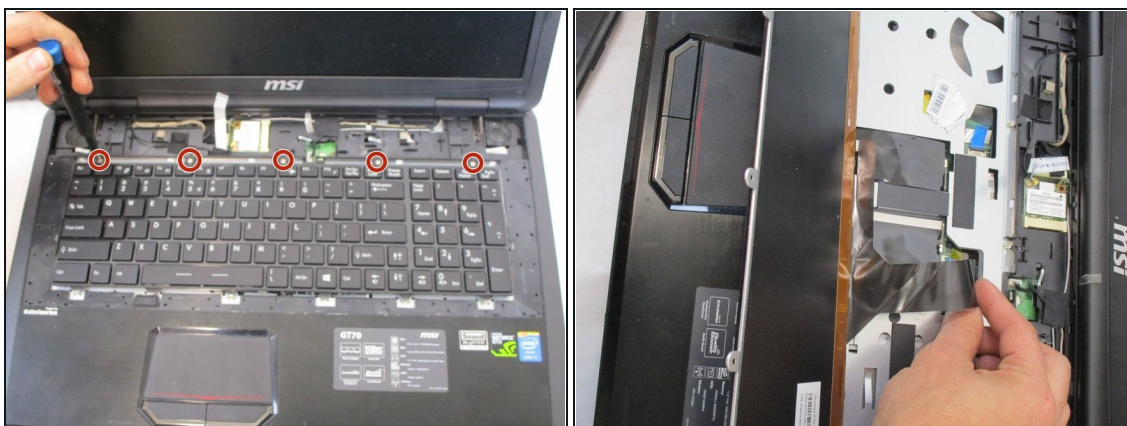
- Slide the hard drive to the left, removing it from its bay.

Step 7 — Keyboard



- Using a Jimmy, remove the outer cover around the keyboard.
- Remove the ribbon cable from the ZIF connector on the underside of the top cover.

Step 8



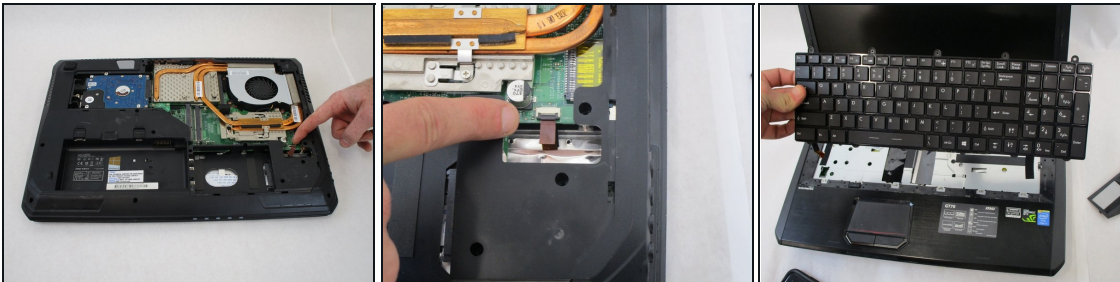
- Using a Phillips #0 screwdriver, remove the five 3 mm screws at the top of the keyboard.

Step 9



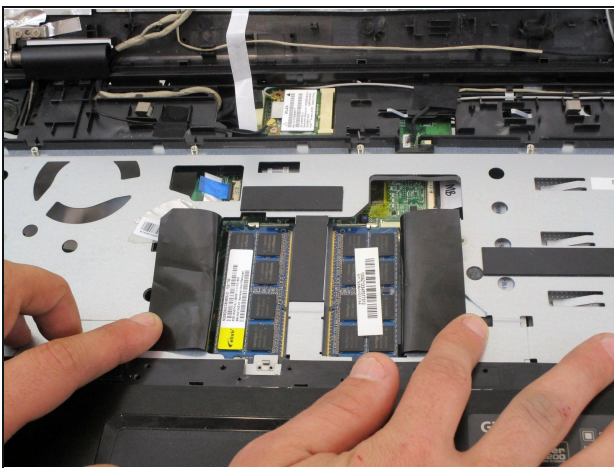
- Flip the keyboard back and disconnect the keyboard cable.

Step 10



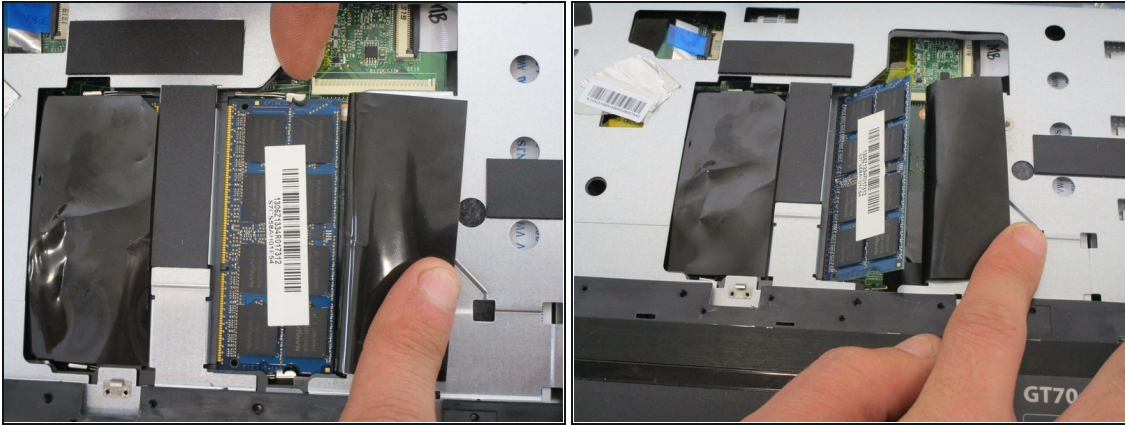
- Flip the laptop over and disconnect the data cable from the ZIF connector on the bottom right.
- You can now turn the laptop back over and remove the keyboard.

Step 11 — RAM



- Pull back the black film, which covers the ram.

Step 12



- Pull the safety latches on either side of the RAM away from each other.
- ⓘ The RAM should pop up at an angle from the motherboard when it has cleared the latches.
- Remove the RAM, maintaining the angle at which it rests.

To reassemble your device, follow these instructions in reverse order.