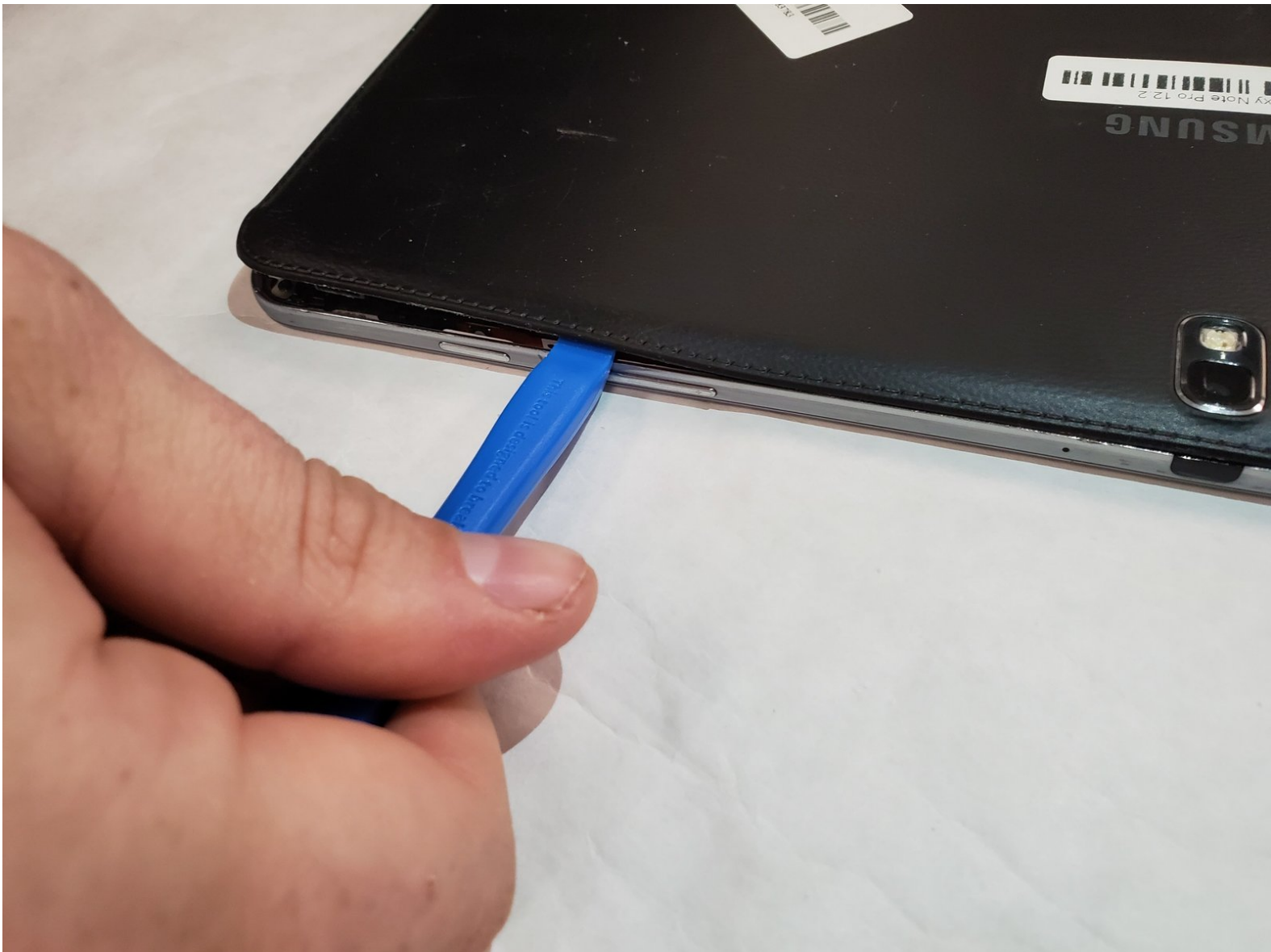




# Samsung Galaxy Note Pro 12.2 Rear Camera Replacement

This guide will teach you how to replace the camera within a Samsung Galaxy Note Pro 12.2 tablet.

Written By: La'Taja Long



---

## INTRODUCTION

Wear and tear of a device can hurt the quality and function of Samsung Galaxy Note Pro 12.2 (Galaxy SM-P900) camera. The purpose of this guide is to replace the rear camera of this tablet.

Steps 1-3 will walk you through the removal of the component. Handle with care as the camera is connected to the motherboard of this device.

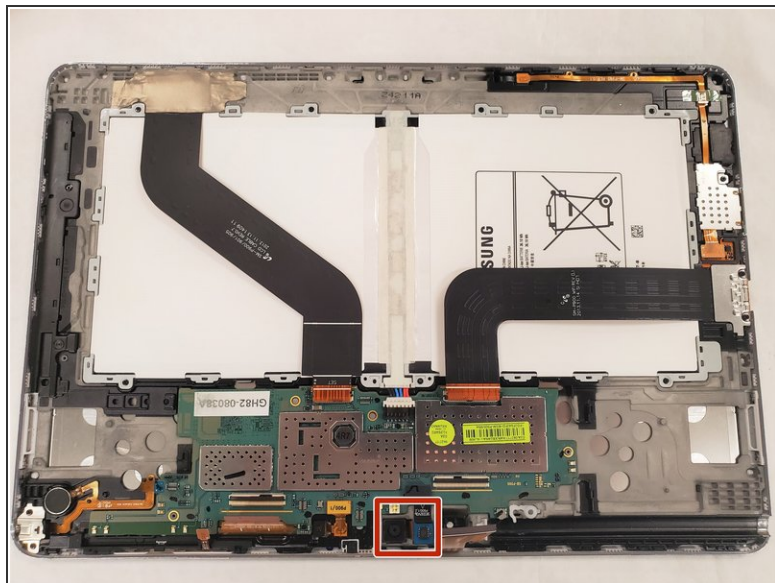
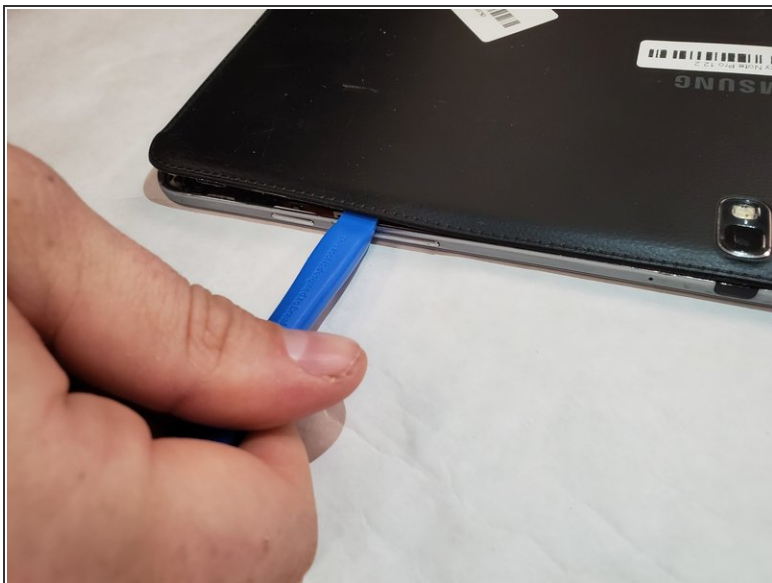
Lastly, be sure that your device is powered off before beginning the disassembly process.



### TOOLS:

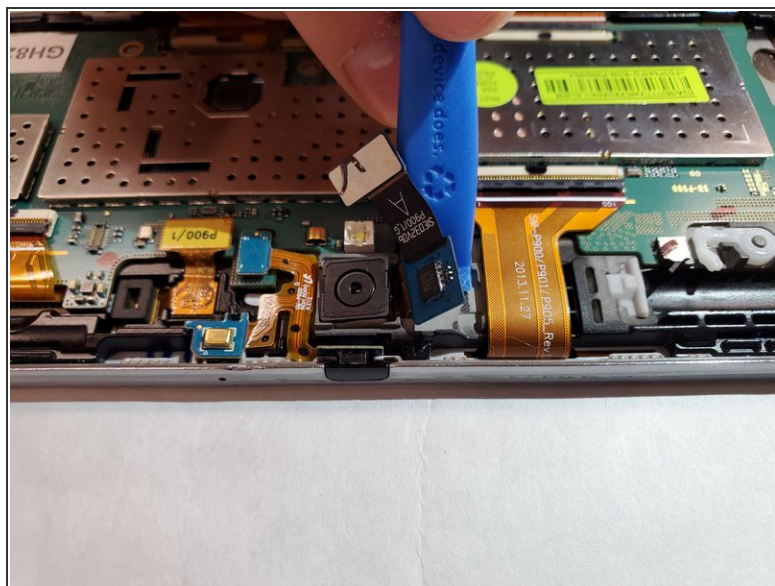
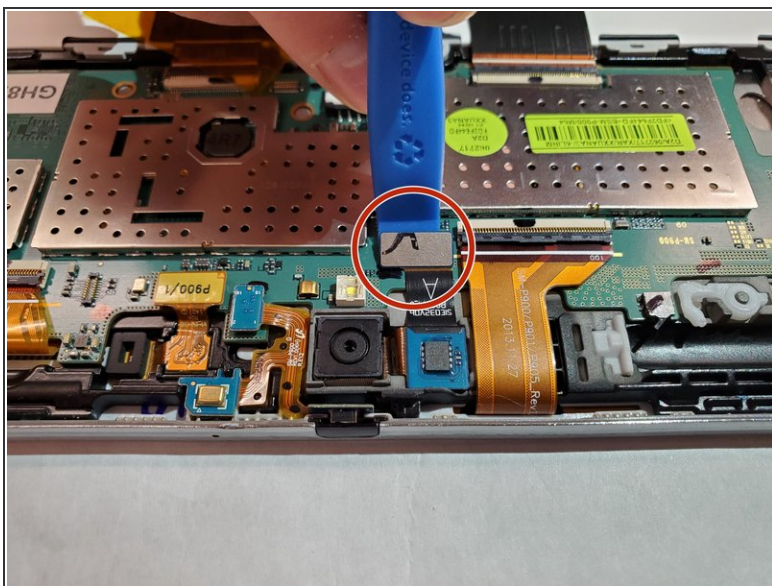
- [iFixit Opening Tools](#) (1)
  - [Tweezers](#) (1)
-

## Step 1 — Rear Camera




- Remove the back cover of tablet with the blue plastic opening tool.

## Step 2

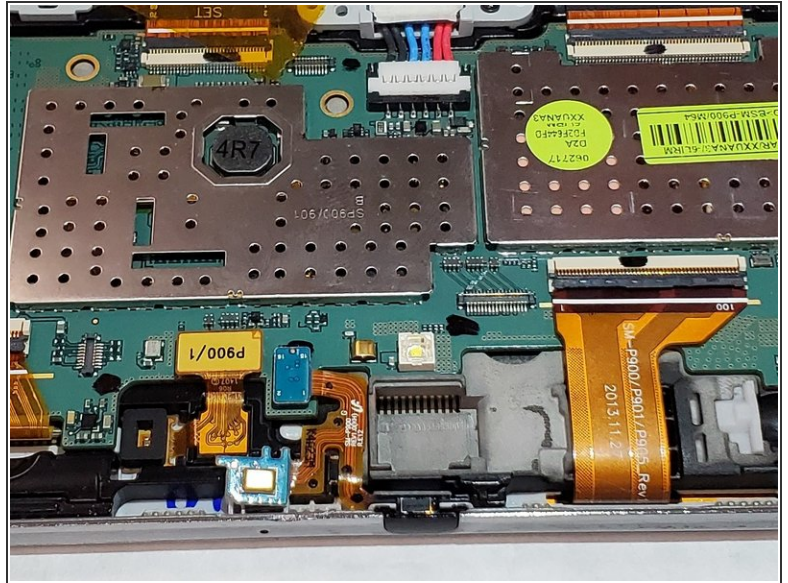
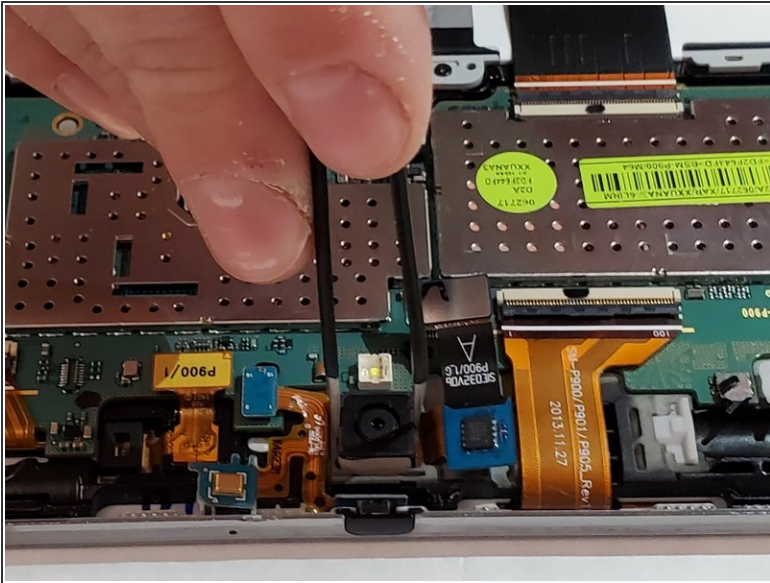


- Remove the base connection to motherboard by prying I.C. chip with the blue opening tool.

 I.C. chip may be held in place with adhesives.



## Step 3



- Use tweezers to carefully remove the camera.

To reassemble your device, follow these instructions in reverse order.