



# HP Envy x360 15-u473cl Wi-Fi Card Replacement

This guide will show how to replace the Wi-Fi Card in your HP Envy x360 15-u473cl.

Written By: Matthew Ortman



---

## INTRODUCTION

A failing Wi-Fi Card can lead to internet connection issues. If you're struggling to connect to the internet, the Wi-Fi card in your device may need to be replaced. This guide will show how to replace the Wi-Fi Card in your device.

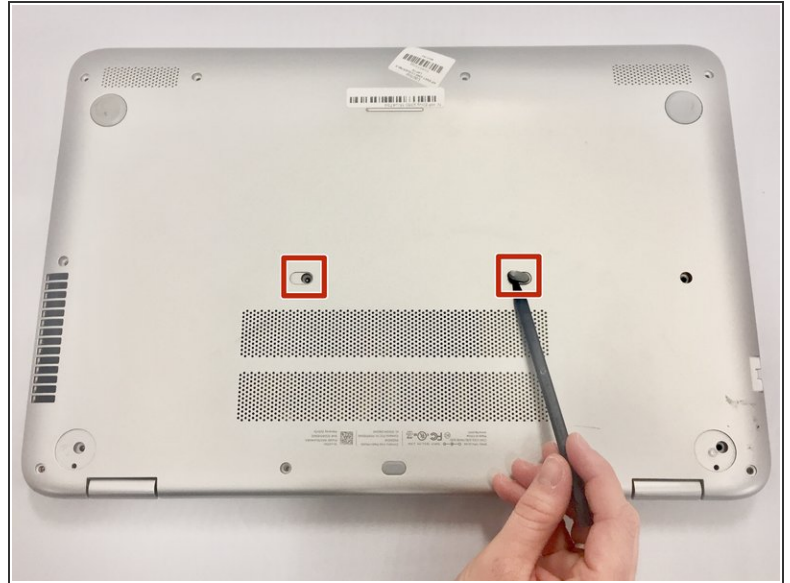
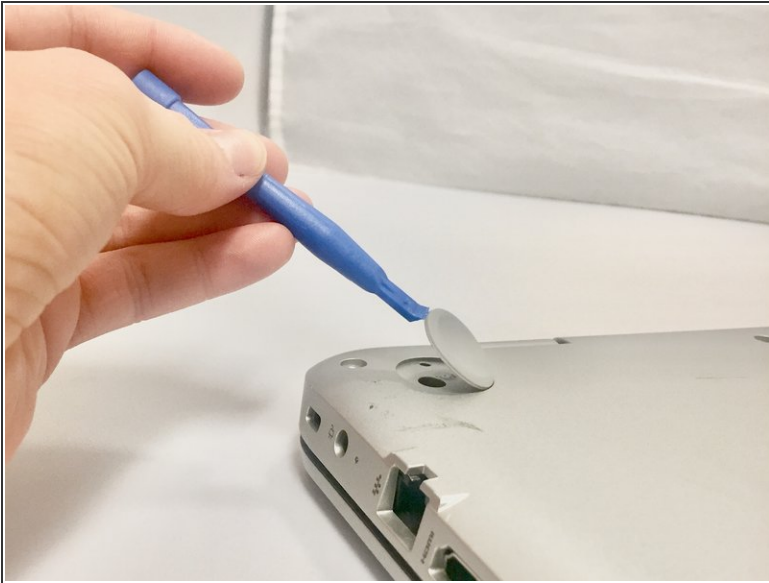


### TOOLS:

- [Spudger](#) (1)
  - [iFixit Opening Tools](#) (1)
  - [Phillips #0 Screwdriver](#) (1)
-



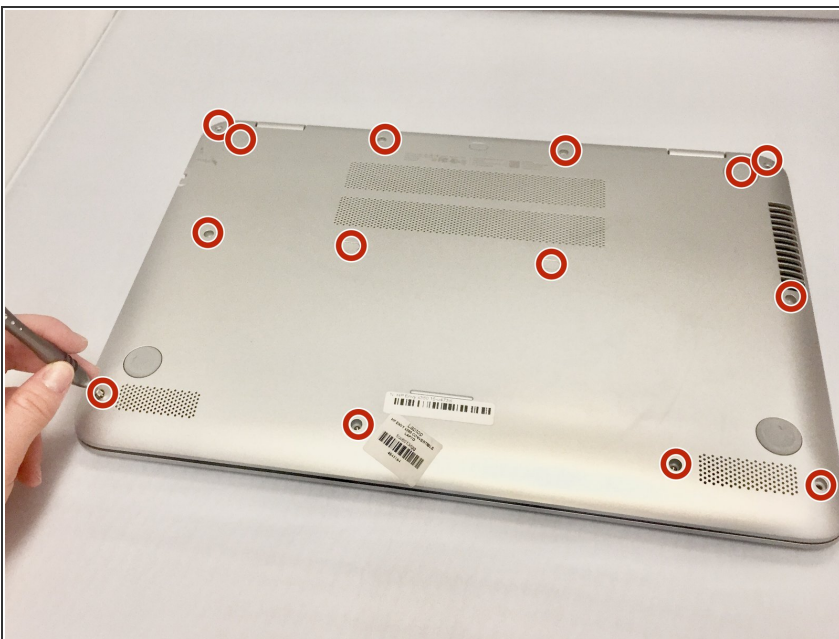
## Step 1 — Battery



**i** Power off your laptop before beginning disassembly.

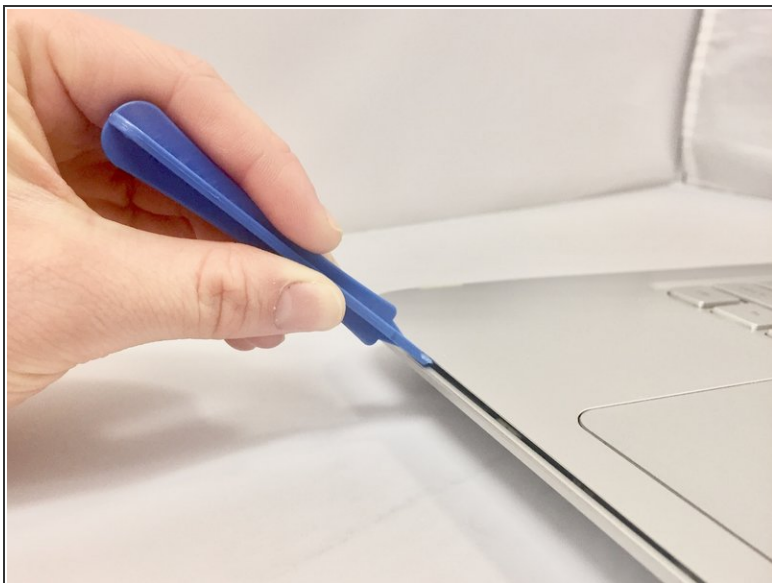
- Pry off the 2 rear rubber pads (closest to the laptop hinge) using the plastic opening tool to reveal two screws.
- Remove the 2 anti-tamper proof covers using the spudger to reveal two screws.

## Step 2



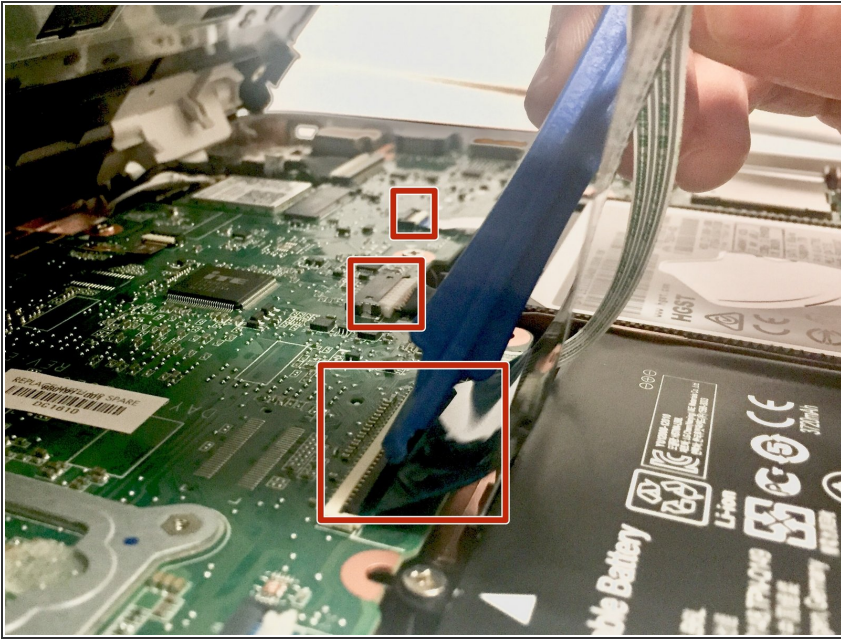
- Remove the fourteen 7mm screws using the Phillips #0 screwdriver from the bottom of the laptop.

### Step 3



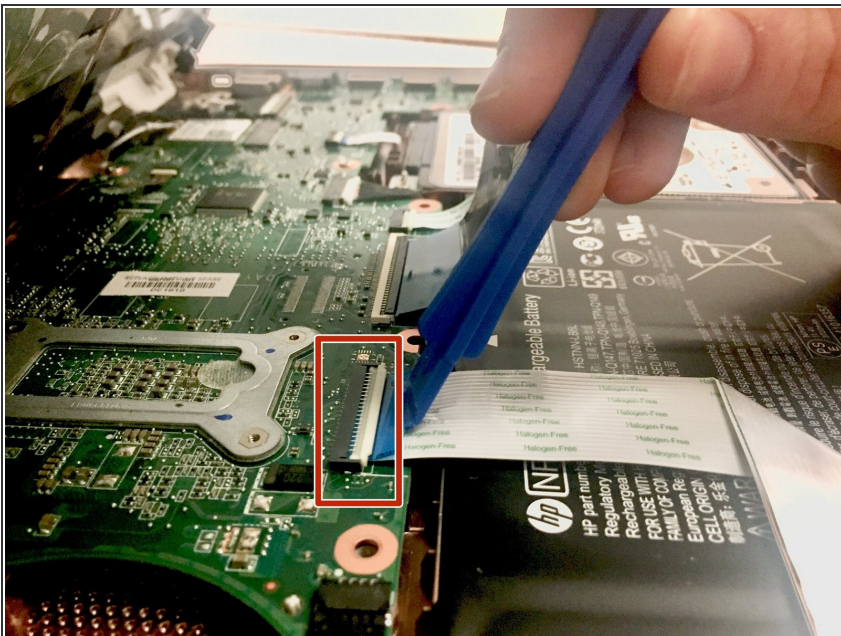
- Turn the device right side up and open the lid.
- Insert the plastic opening tool in between the keyboard plate and the base of laptop.
- Run the tool along seem, prying up as you go.
- Separate the keyboard plate from the base, lifting from the front.

## Step 4



- There are 3 ribbon cables (black, white, and copper color) connecting the computer to the keyboard plate. Disconnect the 3 ribbon cables using the plastic opening tool by prying up the latches holding each cable in place.
- Remove the keyboard plate from the device.

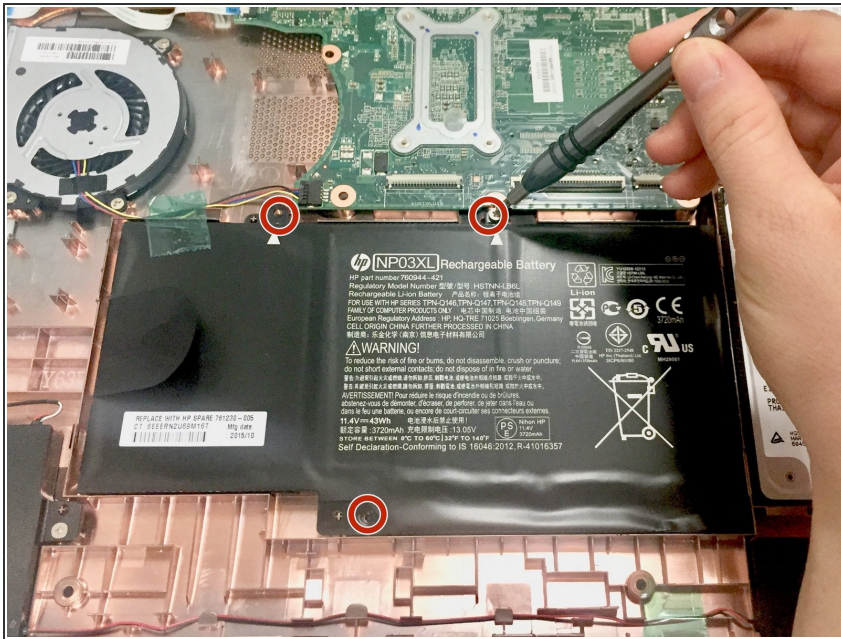
## Step 5



- Remove the thick white ribbon cable covering the battery using the plastic opening tool by prying up the latches attaching each end.

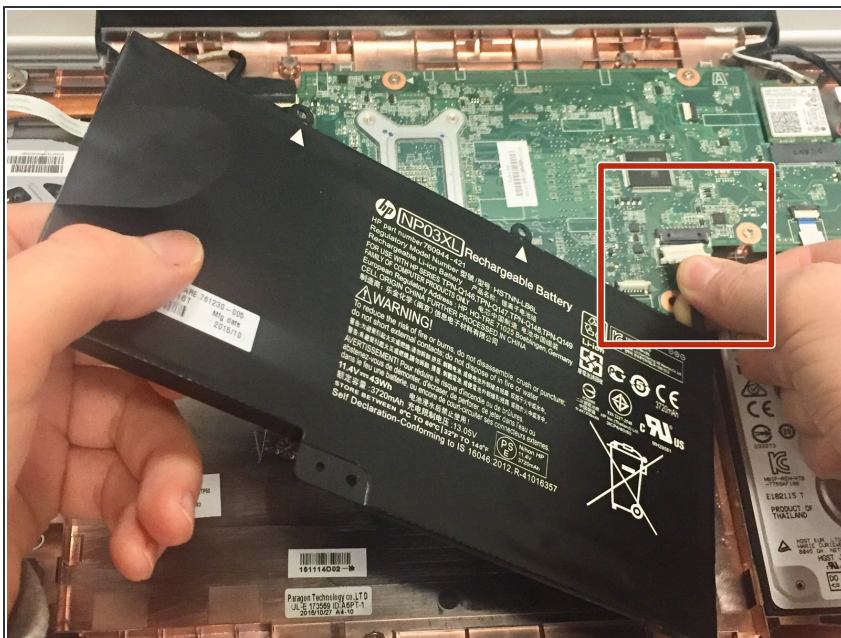


## Step 6



- Remove the three 4mm screws using the Phillips #0 screwdriver.

## Step 7



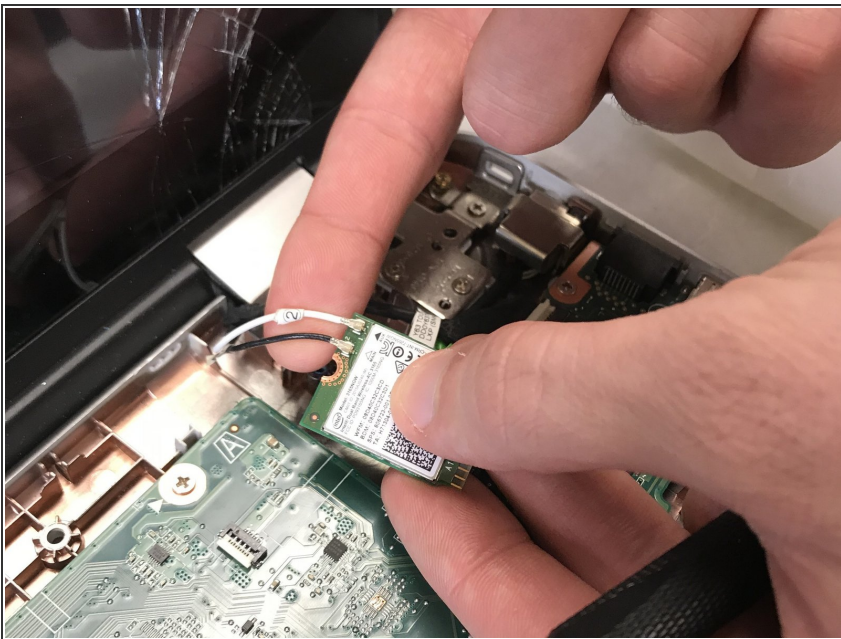
- Disconnect the battery from the motherboard.
- There may be tamper-proof tape holding the battery in place. Remove the tape if present.
- Remove the battery from the device.

## Step 8 — Wi-Fi Card



- Remove one 3mm screw with the Phillips #00 screwdriver.

## Step 9



- Disconnect the wireless card by pulling away from the black connector using the spudger.
- Push up on the two wires to release the connectors and remove the Wi-Fi card from the device.

To reassemble your device, follow these instructions in reverse order.