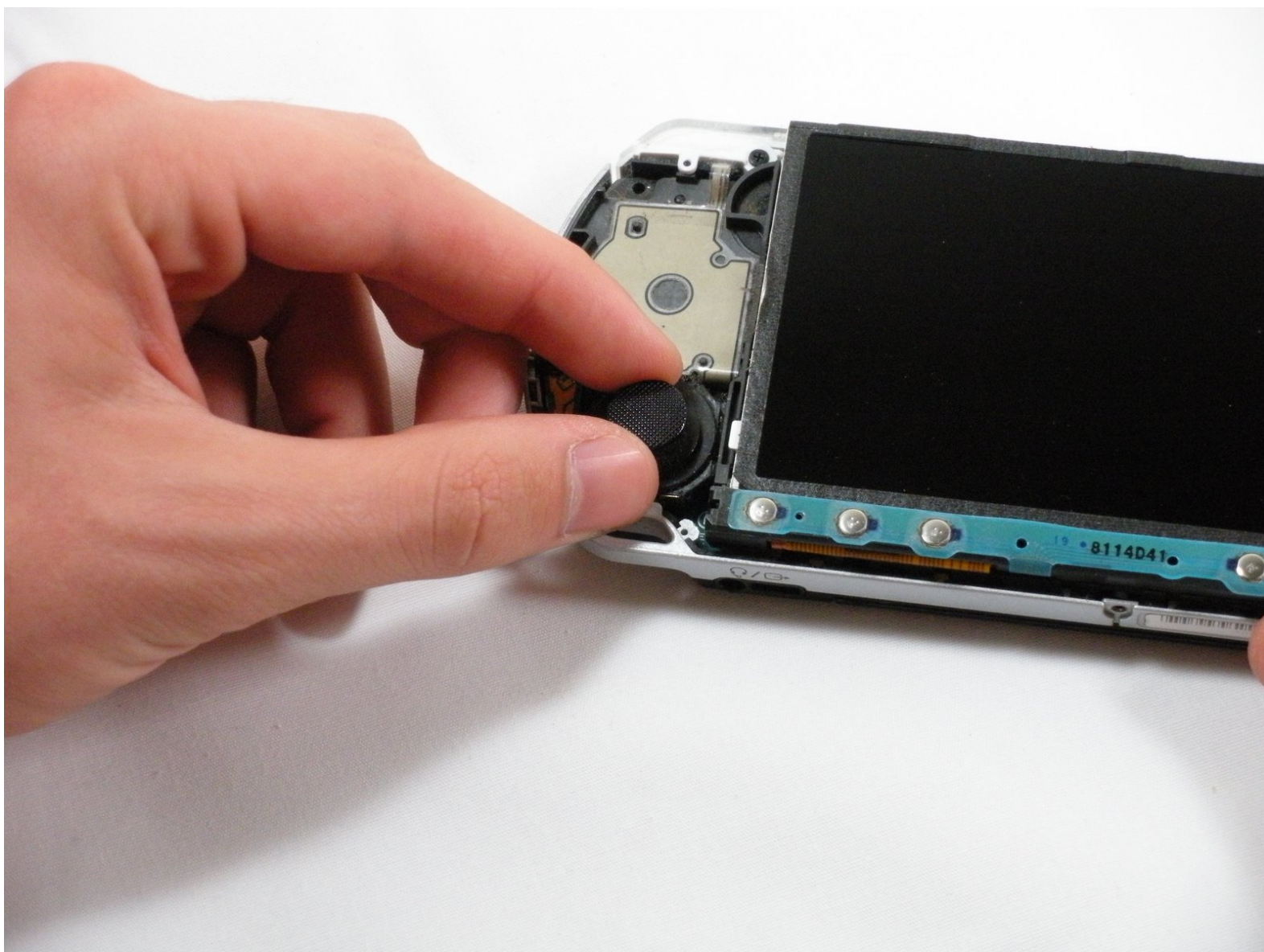




PSP 2000 Analog Stick, D-pad and Action Keys Replacement

Written By: pepe32290



INTRODUCTION

Hate it when you can't get it up? We mean buttons, of course... fix them with our quick and easy steps.



TOOLS:

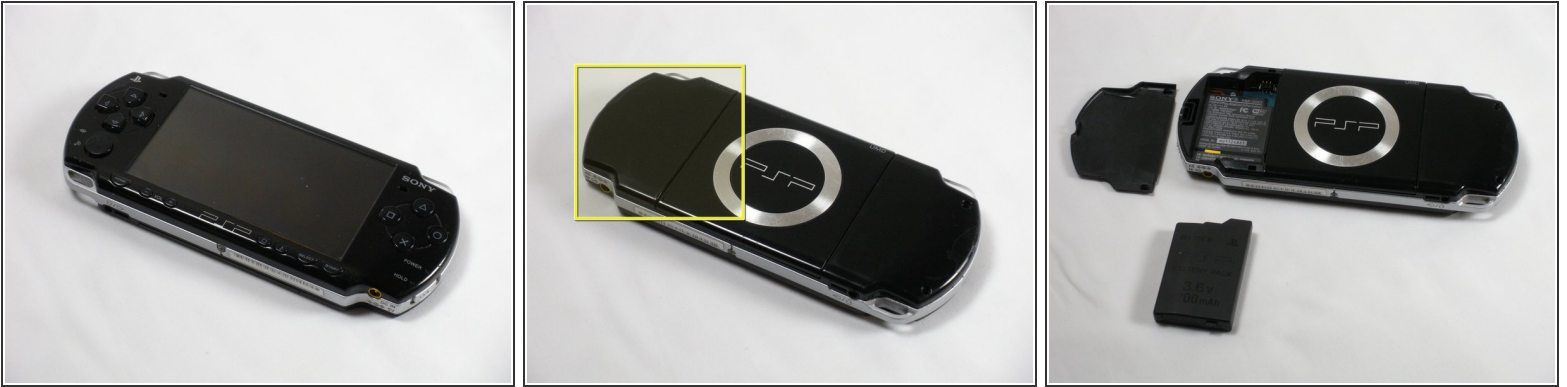
- [Phillips #00 Screwdriver](#) (1)
- [iFixit Opening Tool](#) (1)



PARTS:

- [Sony PSP 2000 Analog Stick](#) (1)
- [Sony PSP 2000 Button Set](#) (1)

Step 1 — Battery



- Place PSP face down, so that the UMD Drive is facing upwards.
- Locate the battery door and open.
- Remove the battery from inside.

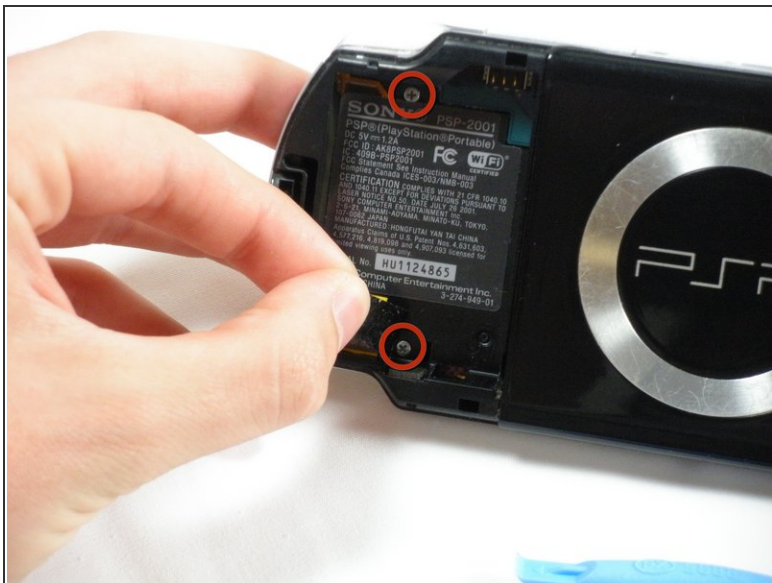
Step 2 — Front Casing



⚠ This step requires the removal of the warranty sticker. **Removing the sticker will void the warranty.** According to the FTC removing this will not void your warranty.

- Locate the sticker in the battery compartment labeled: *"En: Warranty Void if Seal Damaged."*
- Remove the sticker using the PSP Opening Tools.
- ⓘ Under the sticker is a 5mm Phillips screw needed in the next step.

Step 3



- Remove four 5 mm Phillips from the case.

i If the screws stick in the case, you can use a magnetized screwdriver to draw them out.

Step 4



- Remove the following screws from around the bezel:
 - Two 4 mm Phillips
 - One 5 mm Phillips
- ☑ The two shorter 4 mm screws are on the top of the PSP; the longer 5 mm screw is on the bottom.

Step 5



- Gently pry the front bezel away from the casing using a PSP opening tool.
 - Start on the right hand side of the PSP bezel, and carefully work the tool around the side.
- i** If you want to clean the control buttons or D-pad, you can easily pop them out once the faceplate is off and wipe them clean.

Step 6 — Analog Stick, D-pad and Action Keys



- With the PSP's faceplate removed, position the PSP so that the analogue stick is easily attainable.
- Gently pull up on the analogue stick. It should just pop off from the rest of the device.
- In order to clean it correctly, take a cotton swab w/ rubbing alcohol and clean the base of the analogue stick.
- The connection point on the PSP should be done as well (where the analogue stick meets the PSP).

Step 7



- i** Once the analogue stick has been cleaned, you may wipe the connection points of the *D-pad* and *Action Keys* from the PSP to the faceplate.
- Next, with the faceplate turned upside down, locate the clear/white rubber backing of the D-pad to the left of the display window.
 - Gently peel back and proceed to remove the directional buttons from the faceplate.
 - Now is the time to clean the rubber backing and D-pad with rubbing alcohol, being sure to remove as much dirt and dust as possible.

Step 8



- This process can also be done to the Action Keys (x, square, triangle, circle).
- Locate the black rubber backing on the right of the display window and gently remove.
- Again take a clean cotton swab with rubbing alcohol and clean away all dirt at dust.
- ⓘ Now might also be a good time to just clean the surface of the home bar and inspect the home keys if they have dust as well.

To reassemble your device, follow these instructions in reverse order.