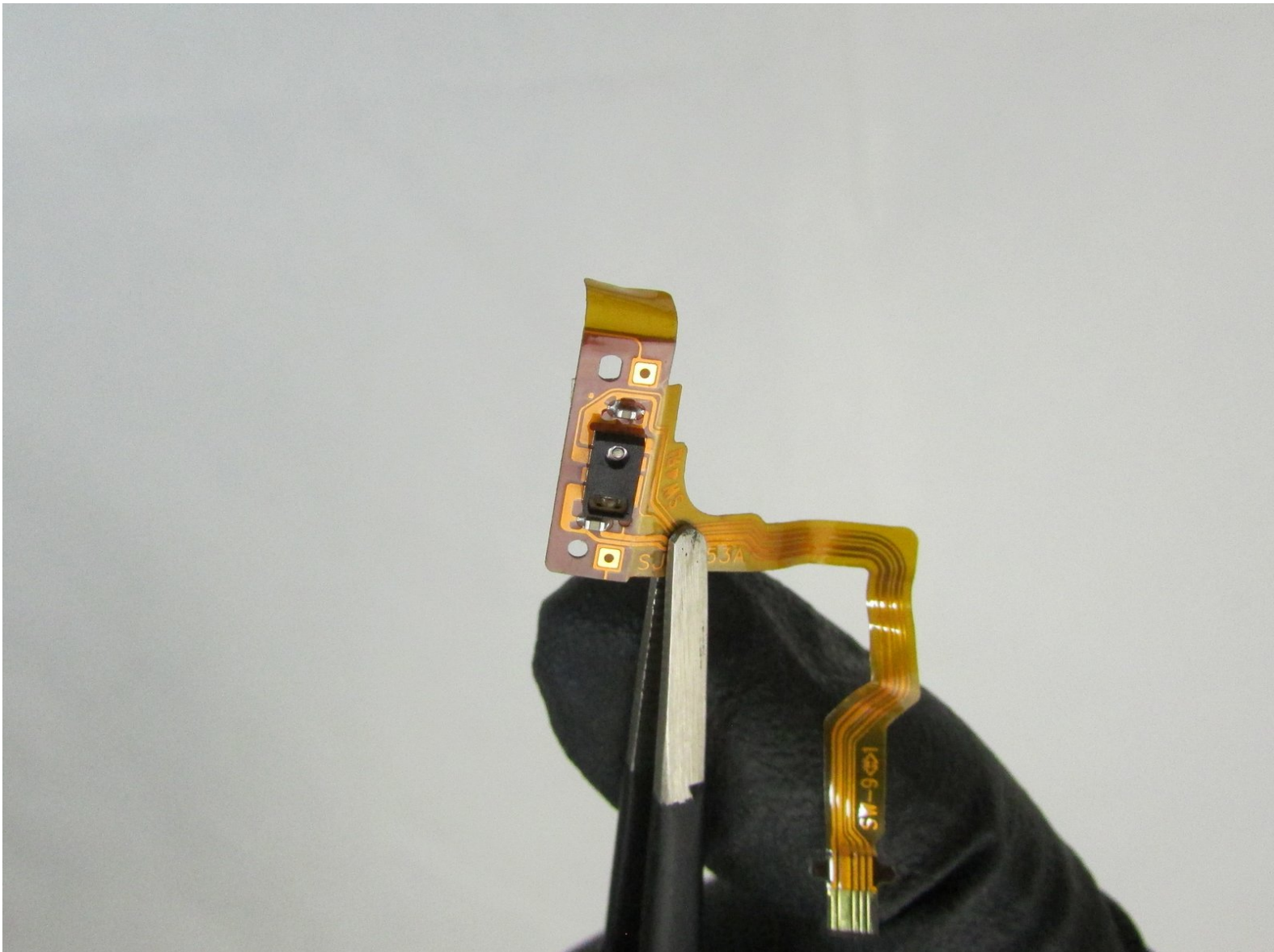




Panasonic Lumix DMC-GX85 Eye Sensor Replacement

How to replace a Panasonic Lumix DMC-GX85 eye sensor.

Written By: Hae Bom



INTRODUCTION

The proximity sensor, or eye sensor, is used to tell the Panasonic Lumix DMC-GX85 when to activate the viewfinder when you put your eye up to it. If this is not happening when you hold the camera up to your eye, you may need to replace this sensor.



TOOLS:

- [Phillips #0 Screwdriver](#) (1)
 - [Spudger](#) (1)
 - [ESD Safe Tweezers Blunt Nose](#) (1)
 - [iFixit Opening Tool](#) (1)
-

Step 1 — Rear Cover



- Remove the plastic hot shoe cover by sliding it towards the rear of the camera.

Step 2




- Using a spudger, gently lift the forward end of the shoe spring to disengage its locking mechanism.
- While holding the forward end of the shoe spring up, push from its lifted end to remove the shoe spring.

Step 3



- Remove the two 6.0mm silver Phillips #0 screws closest to the display screen.

 Do not remove the two forward-most silver screws.

Step 4



- Turn the camera so the side with the jack cover is facing you.
- Near the camera's top end, remove the 4.0mm black Phillips #0 screw on the bottom in this orientation.
- Open the jack cover and remove the 4.0mm black Phillips #0 screw inside.

Step 5



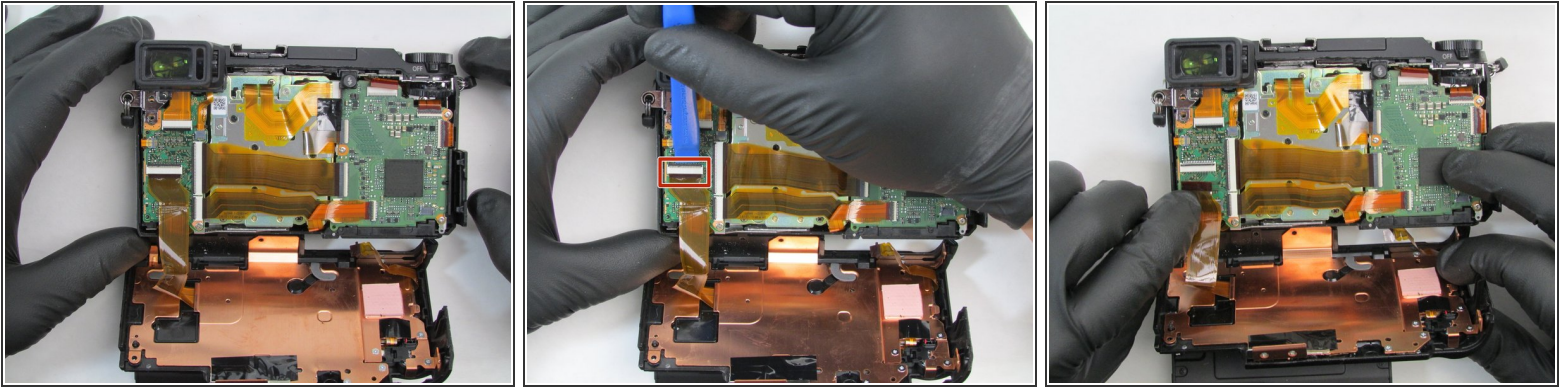
- Flip the camera upside down so the bottom of the camera is facing you.
- Remove the two center 2.5mm black Phillips #0 screws.
- Remove the outer 4.5mm black Phillips #0 screw.


Step 6



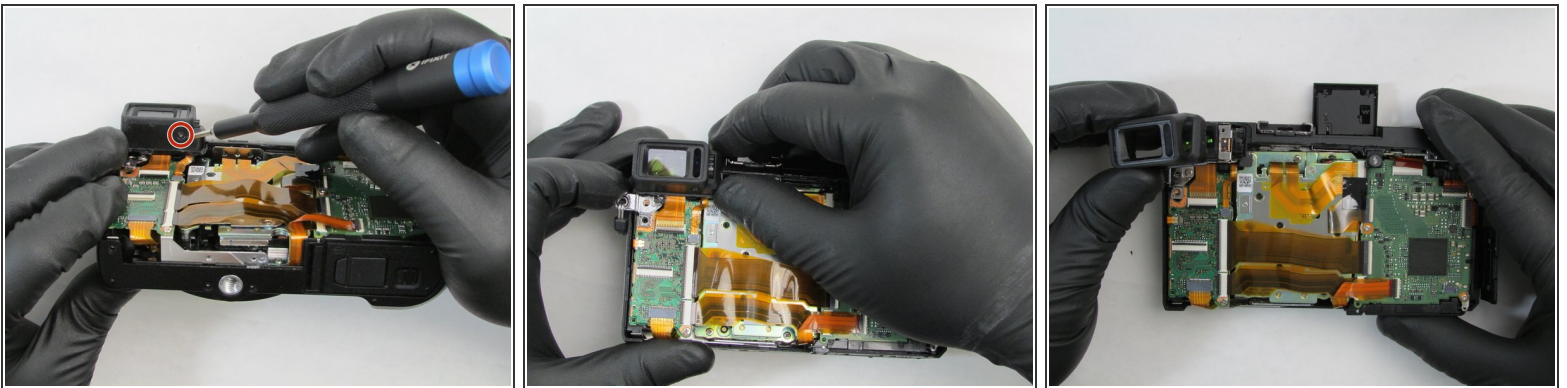
- Turn the camera so the display screen is facing you.
 - Rotate the top of the screen away from the camera body to access and remove the 4.5mm black Phillips #0 screw.
 - Remove the rear camera cover by gently pulling from the top side.
- i** When removing the rear cover, pull apart slowly to prevent damaging the ribbon cable connecting the display screen and the Sub PCB.

Step 7



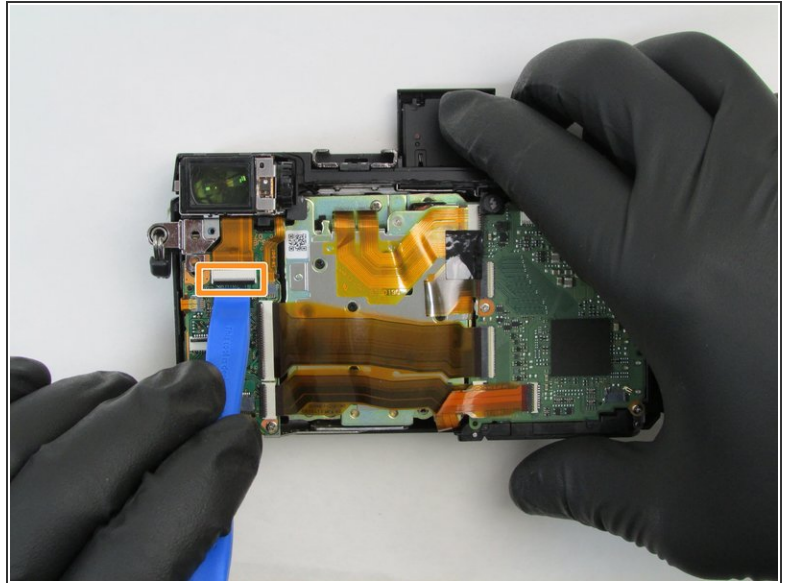
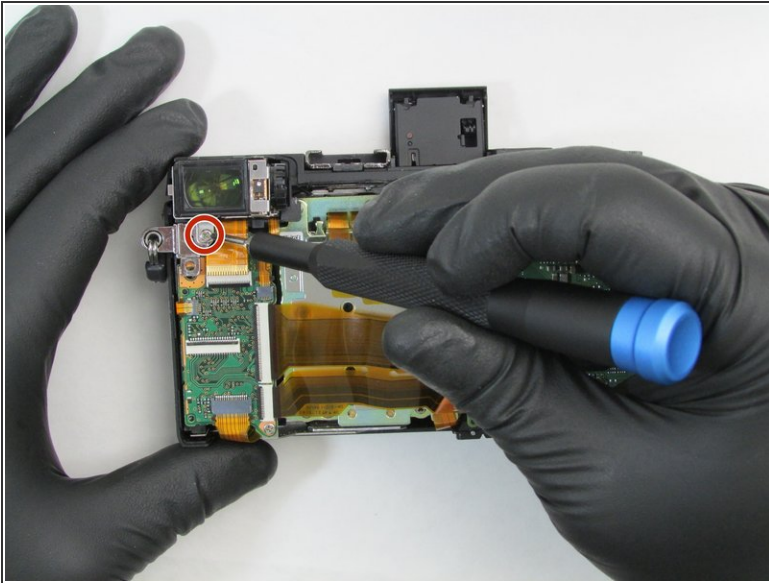
- Turn the camera so the lens is facing down with the rear cover pulled back.
 - Disconnect the ribbon cable from the camera by pulling up on the black locking tab with an iFixit opening tool.
 - Pull the ribbon cable from the connector. The rear cover is now completely detached from the camera.
-  Do not bend the ribbon cable excessively and take care not to damage the ribbon cable.

Step 8 — Viewfinder



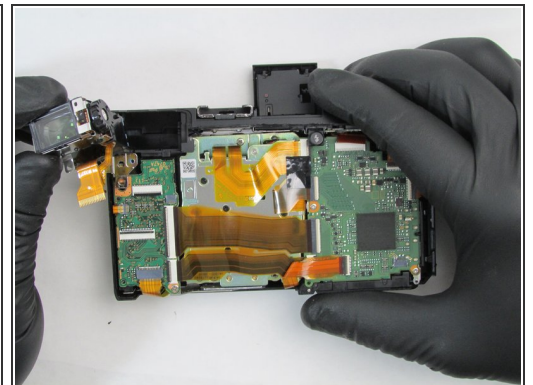
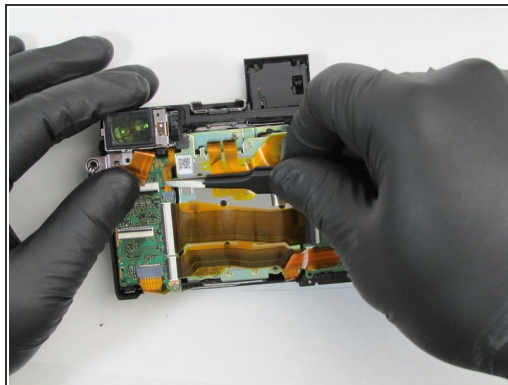
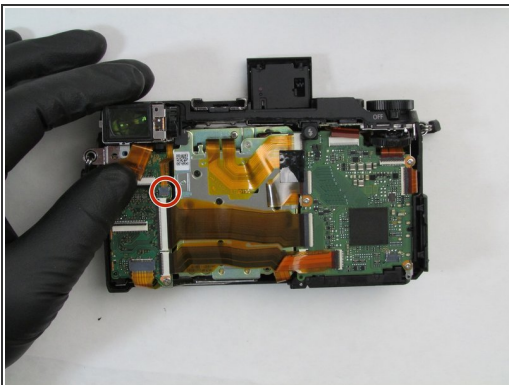
- Remove the 4.5mm black Phillips #0 screw under the viewfinder.
- Gently pull the viewfinder cover from the camera.

Step 9



- Remove the 2.5mm silver Phillips #0 screw located below the viewfinder.
- Remove the ribbon cable from the underside of the camera by unlatching the black locking tab with an iFixit opening tool then pulling the ribbon away from the connector.
- ⓘ Do not bend the ribbon cable excessively and take care not to damage the ribbon cable.

Step 10



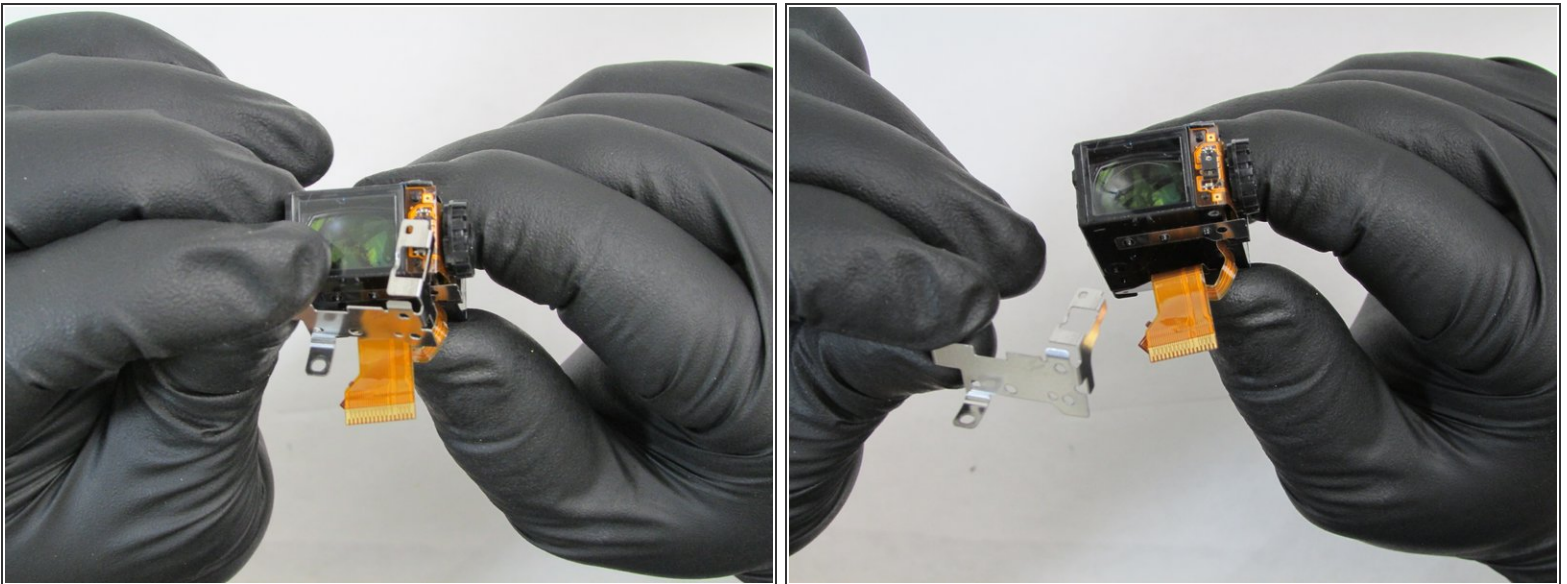
- Remove the small ribbon cable by gently pulling it away from the camera with ESD safe tweezers.
- Remove the viewfinder from the camera body.

Step 11 — Eye Sensor



- Hold the viewfinder with the ribbon cables facing up and towards you.
- Remove the black 4.5mm screw Phillips screw from the bottom of the viewfinder.

Step 12



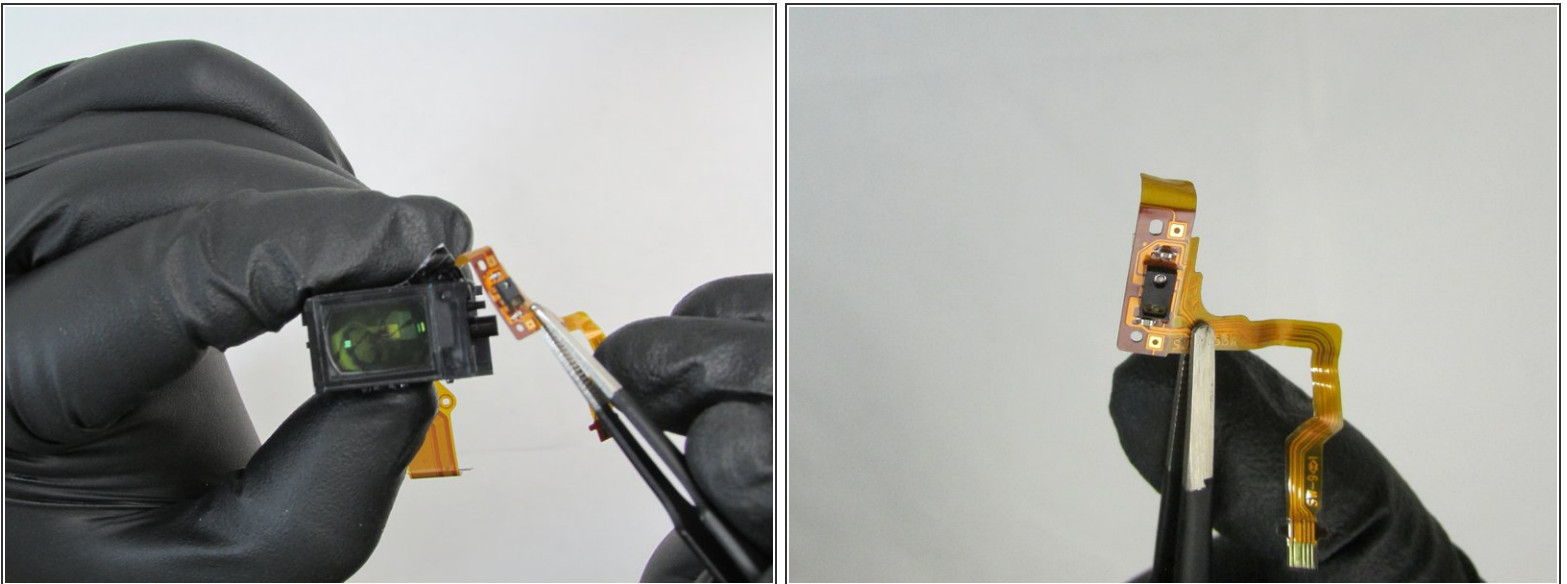
- Pull the silver bracket away from the viewfinder unit.

Step 13



- Turn the viewfinder sideways so the cable ends and viewfinder focus wheel are facing you.
- Remove the 3.5mm silver Phillips #0 screw from the center of the focus wheel.
- Remove the focus wheel.

Step 14



- With tweezers, gently pull the eye sensor away from the viewfinder unit.

To reassemble your device, follow these instructions in reverse order.

