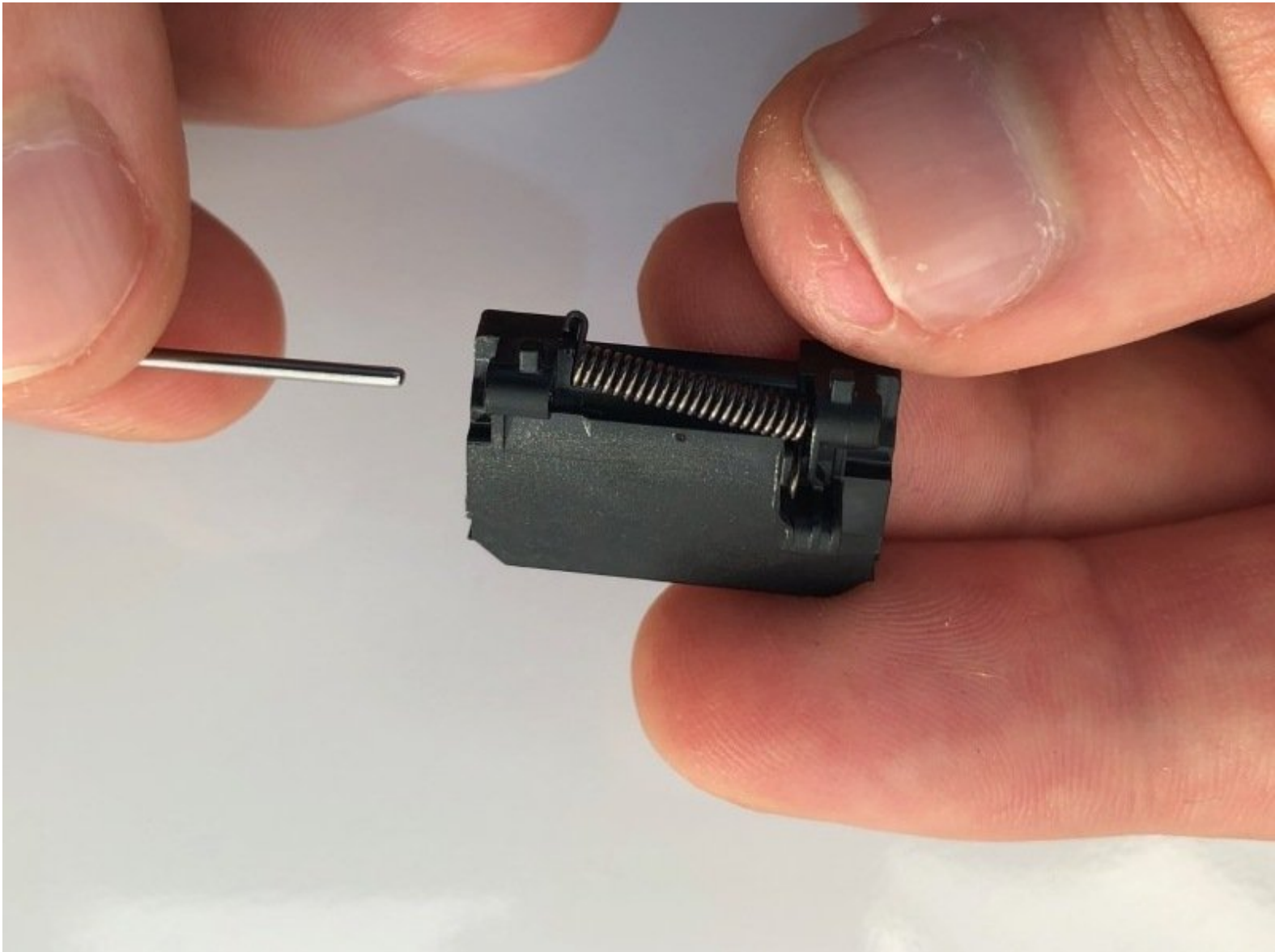




# Panasonic Lumix DMC-GX85 Pop-up Flash Spring Replacement

Replacing the spring on the flash of your Panasonic Lumix DMC-GX85 camera.

Written By: Jalen Peterson



## INTRODUCTION

Over time, the tension in the spring of your Panasonic Lumix DMC-GX85's flash can diminish causing unwanted lighting issues when using your device. A simple solution to prolong the quality of your camera is to replace the spring in the flash once every thousand hours of use.



### TOOLS:

- [Spudger](#) (1)
  - [Phillips #0 Screwdriver](#) (1)
-

## Step 1 — Pop-up Flash Spring Replacement



- Orient the camera so that the display screen is facing you.
- Press the flash button to reveal the camera's pop-up flash.

## Step 2



- Orient the camera so that the lens is facing you.
- Remove two 2mm Phillips #0 screws on the sides of the flash.

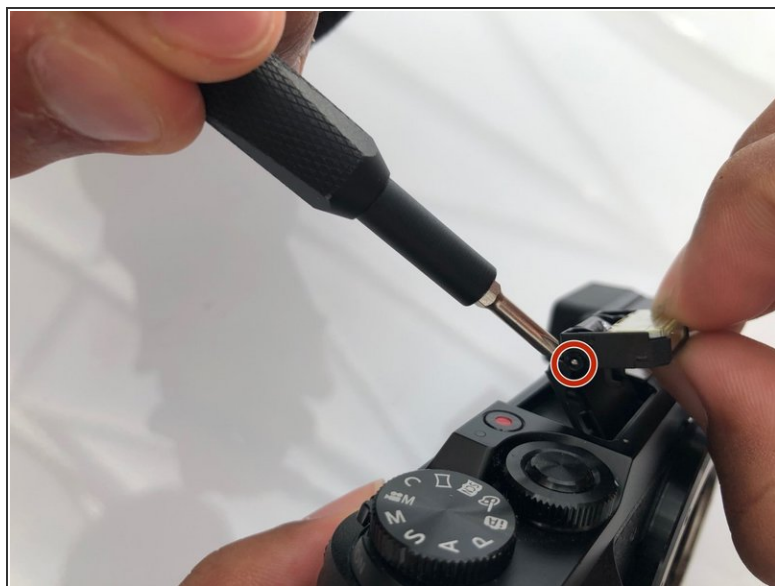


### Step 3



- Remove the cover of the flash.

### Step 4



- Remove the 19mm pin by simply pushing from one side using the pointed end of a spudger.
- Once the pin is removed, the bottom housing of the flash can be taken off from the camera by hand.

## Step 5



- Similar to the previous step, remove the 19mm pin by pushing it from one side using the pointed end of a spudger.

To reassemble your device, follow these instructions in reverse order.