



# Sony VAIO VPC-EB33FM Fan Replacement

This guide will inform readers on how to safely...

Written By: Kevin



## INTRODUCTION

This guide will inform readers on how to safely remove the fan of the Sony VAIO VPC-EB33FM laptop for replacement.



### TOOLS:

- [Tweezers](#) (1)
- [Phillips #1 Screwdriver](#) (1)
- [Phillips #00 Screwdriver](#) (1)

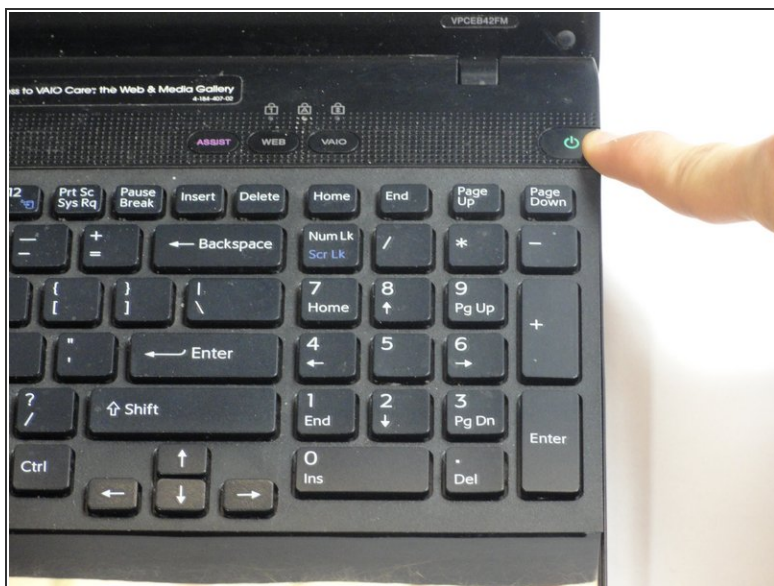


### PARTS:

- [Sony Fan](#) (1)



## Step 1 — Battery



- Power down the laptop by pressing the power button.
- Turn the laptop onto its backside.

## Step 2



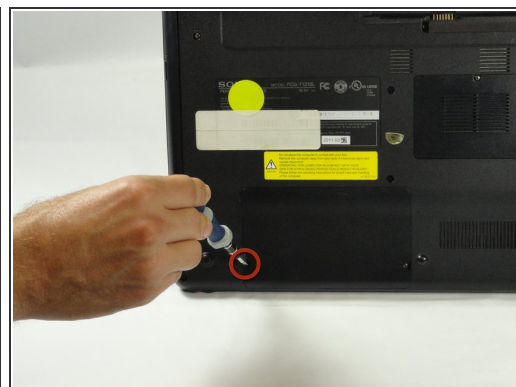
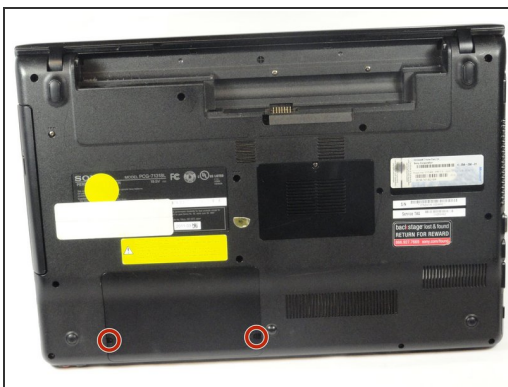
- To release the battery, hold both the release button and the unlock button at the same time.

## Step 3



- Remove the battery out from the notch while continuing to hold the release button.

## Step 4 — Hard Drive



- Use a Phillips #00 screwdriver to remove the two 7.8 mm cover screws on the bottom corners of the panel.



## Step 5



- Use a finger/fingernail to grip the notch at the bottom of the panel to lift it off.

**i** You may need to use your other hand to safely remove the panel.

**i** You can also use a spudger for this step.

## Step 6



- Remove the two remaining 7.8 mm screws using the Phillips #00 screwdriver.

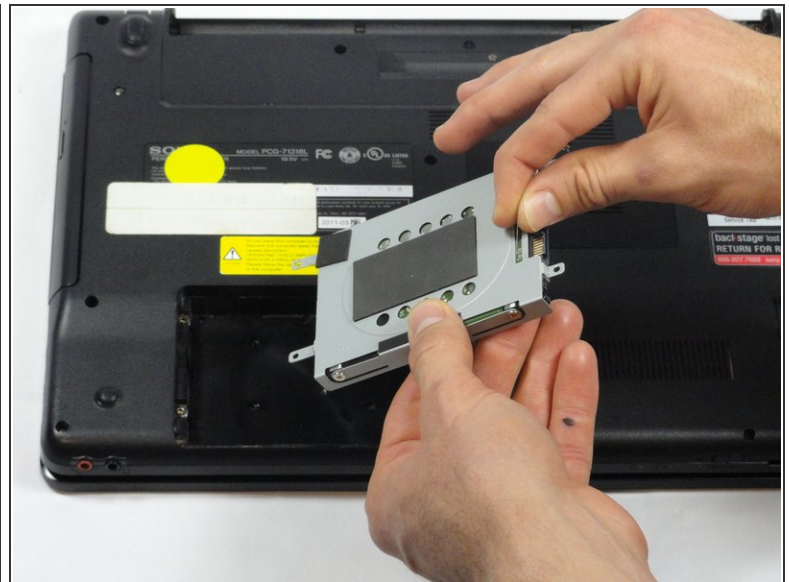
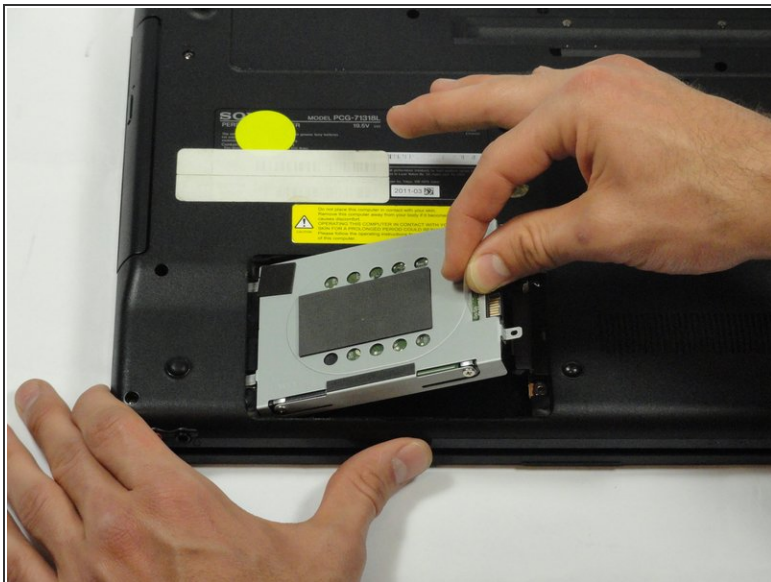
## Step 7



- Grab the tab between your thumb and index finger.
- Hold the hard drive securely in a horizontal position using your other hand.
- Push the hard drive to the left using the plastic tab to disconnect it from the laptop.

⚠ To prevent damage of the connection on the hard disk drive or the laptop, perform this task slowly and with care.

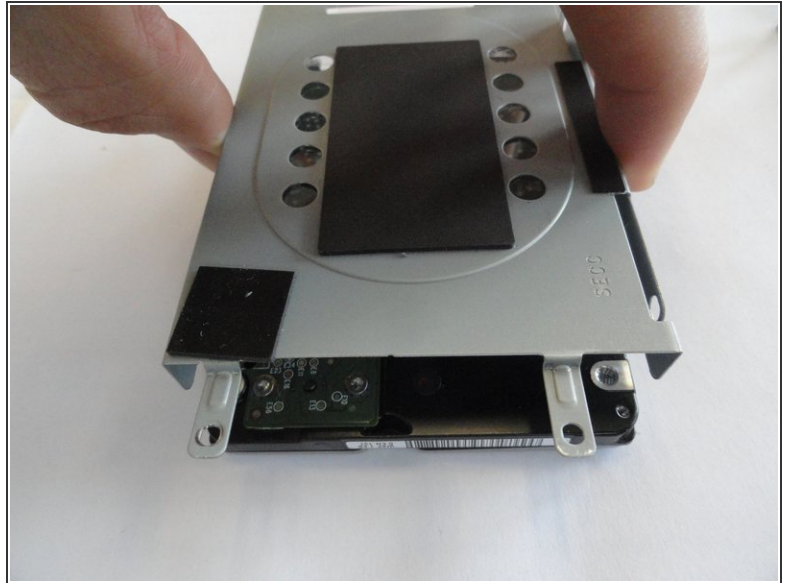
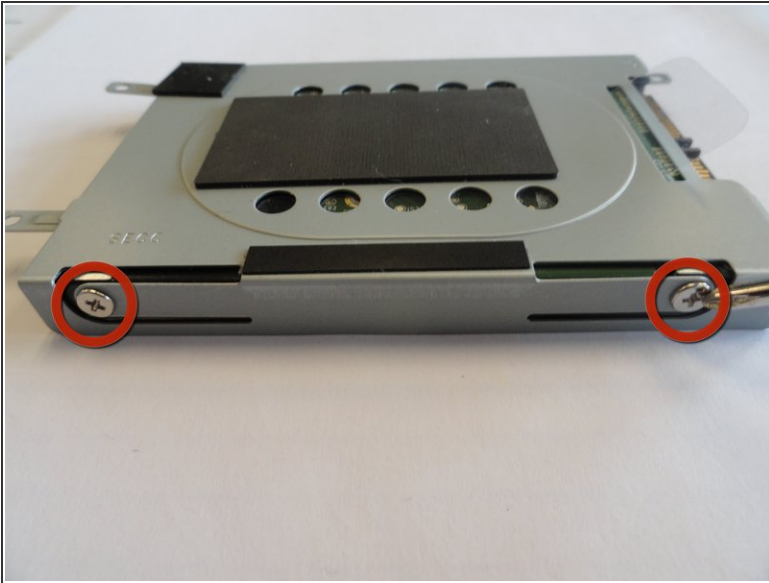
## Step 8



- While still holding the plastic tab, lift the right side of the hard drive out at a 45° angle.
- Pull the hard drive out.

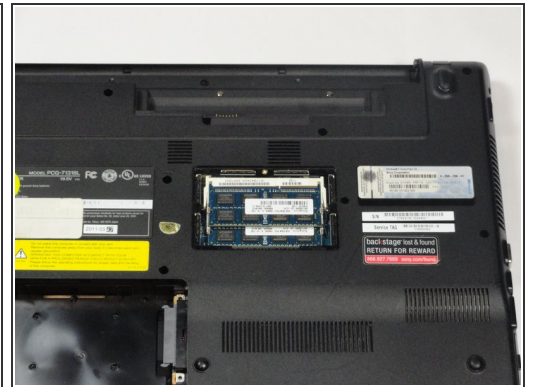
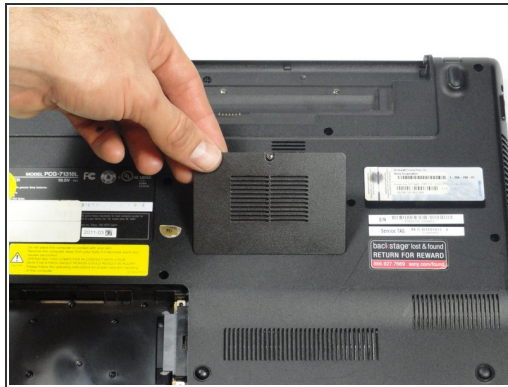
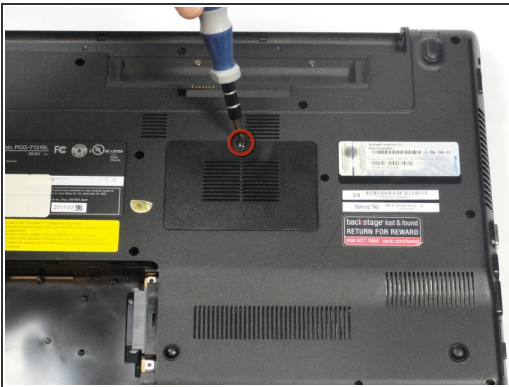


## Step 9



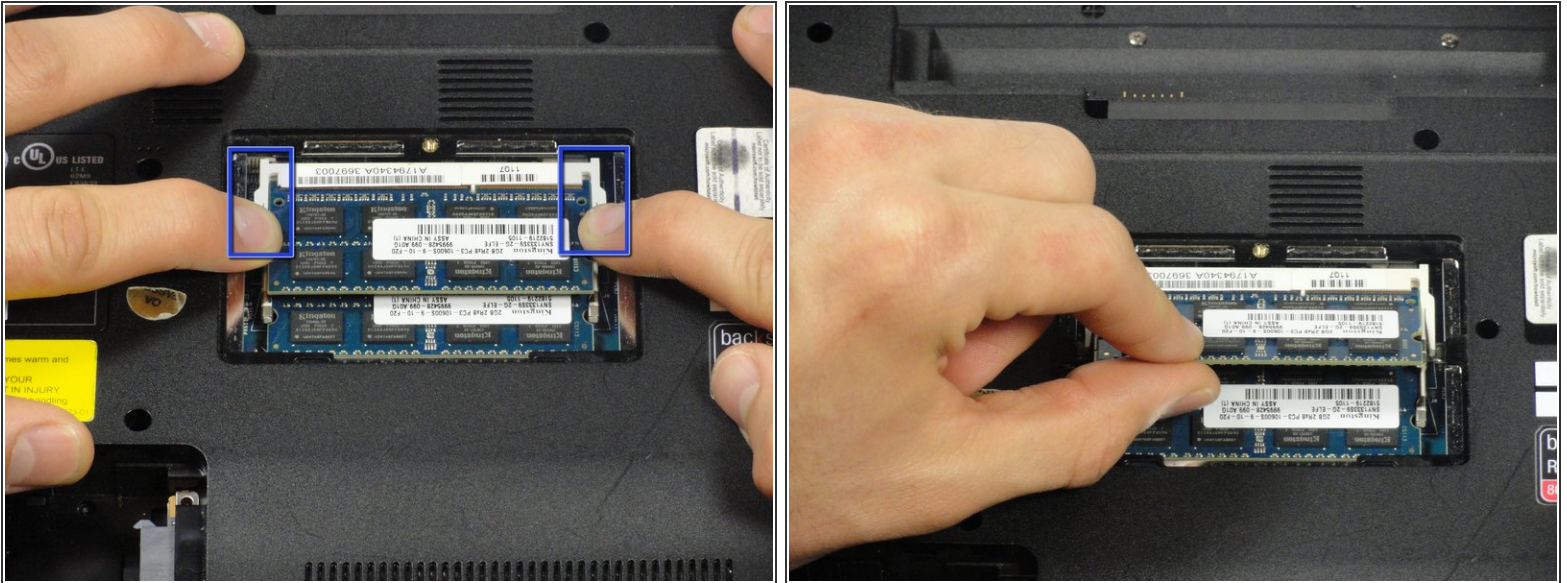
- If you need to remove the bracket from the hard drive, follow the next few steps:
  - Remove the two 3.7 mm screws from either side of the bracket with a Phillips #00 screwdriver.
  - Lift the bracket off the hard drive.

## Step 10 — RAM



- Remove the one screw with a Phillips #00 screwdriver.
- ⓘ The screw cannot be removed from the RAM casing cover.

## Step 11



- Pull the two retaining arms away from the center of the RAM chip.
- The RAM will make a "pop" sound and the RAM stick will rise for ease of handling.

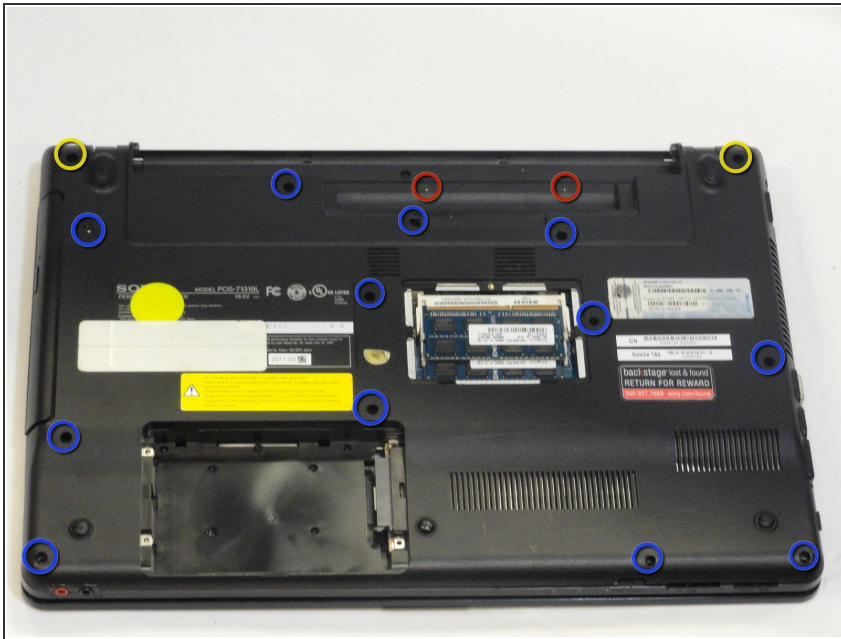
## Step 12



- Pull the RAM stick out of its socket.
- To remove the second stick of RAM, repeat steps six and seven.
- When installing RAM, make sure sticks are firmly in place or the computer will not register them.

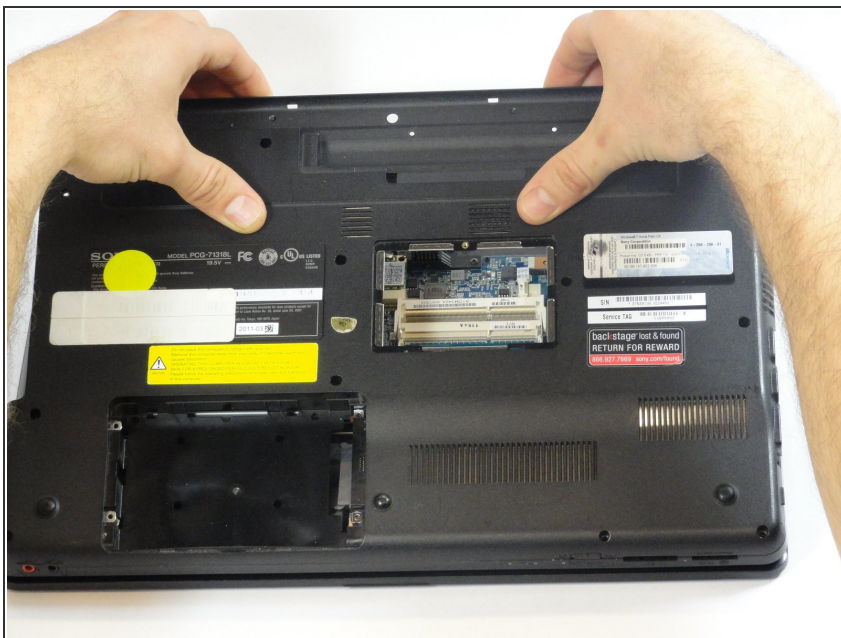


## Step 13 — Fan



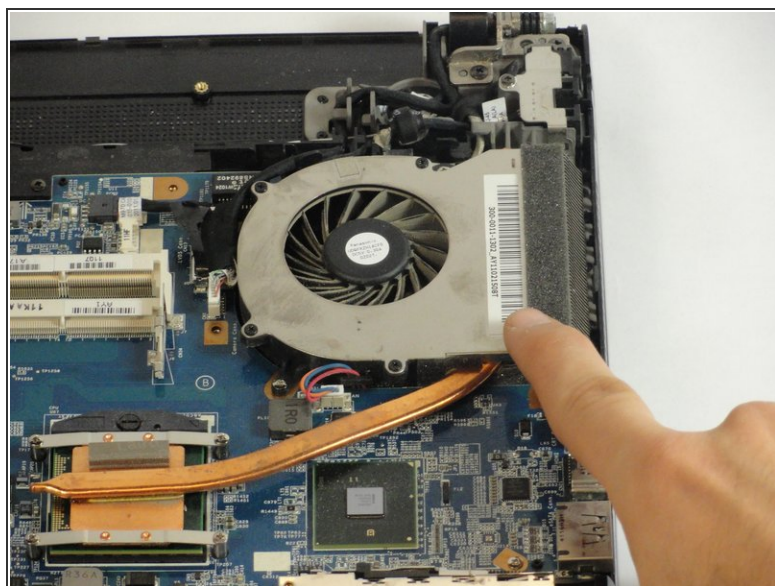
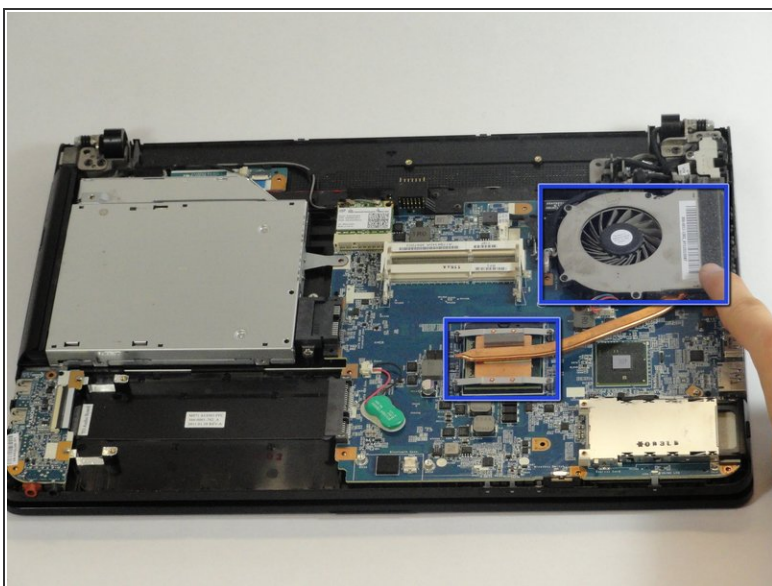
- Remove the following 16 screws securing the back cover using a Phillips #00 screwdriver:
  - Two 3.8-mm screws
  - Two 8.9-mm screws
  - Twelve 7.75-mm screws

## Step 14



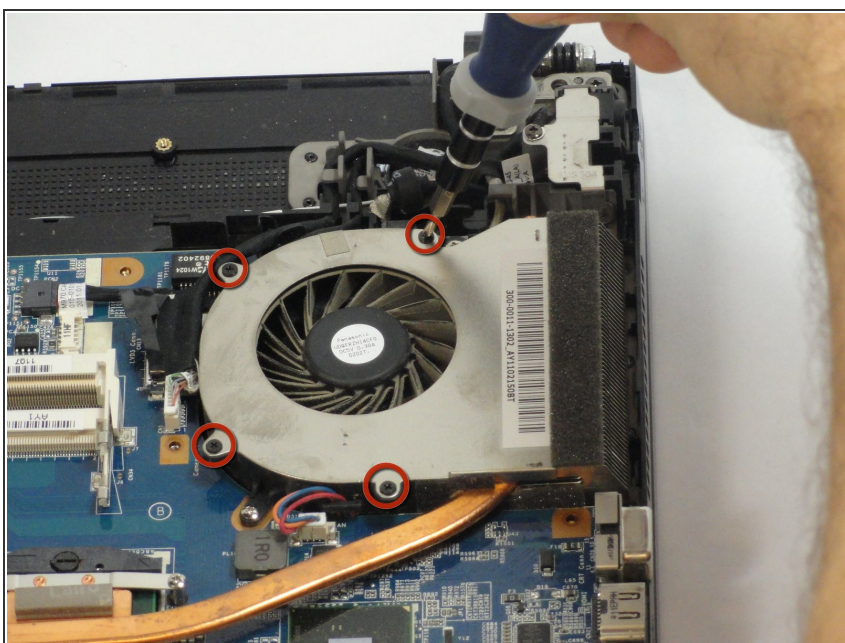
- ⚠ Check to make sure all the screws have been removed.
- Using both hands, separate the back cover by lifting from the back and working around the perimeter to release tabs.

## Step 15



- Locate the fan and the processor attachment.

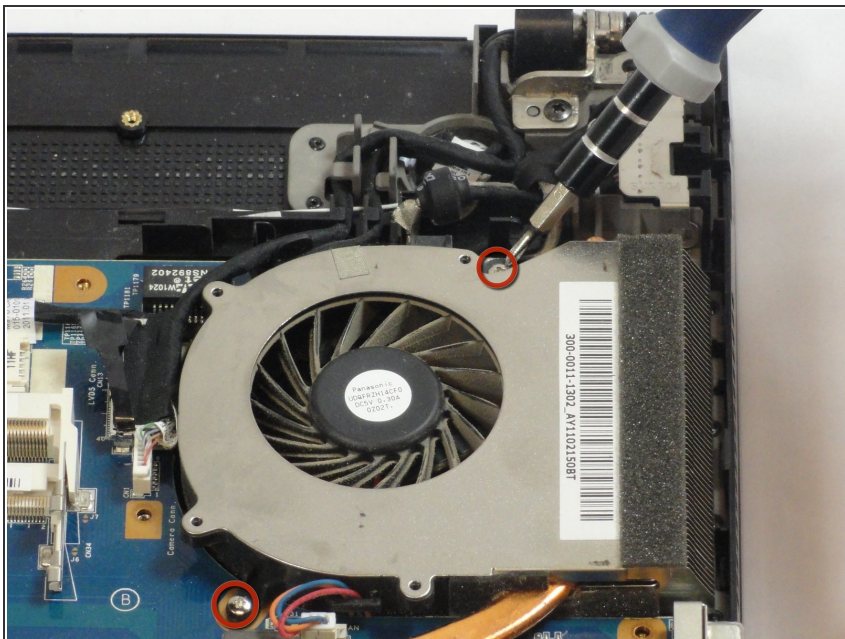
## Step 16



- Using a Phillips #00 screwdriver, remove the top four 3.88-mm fan screws.

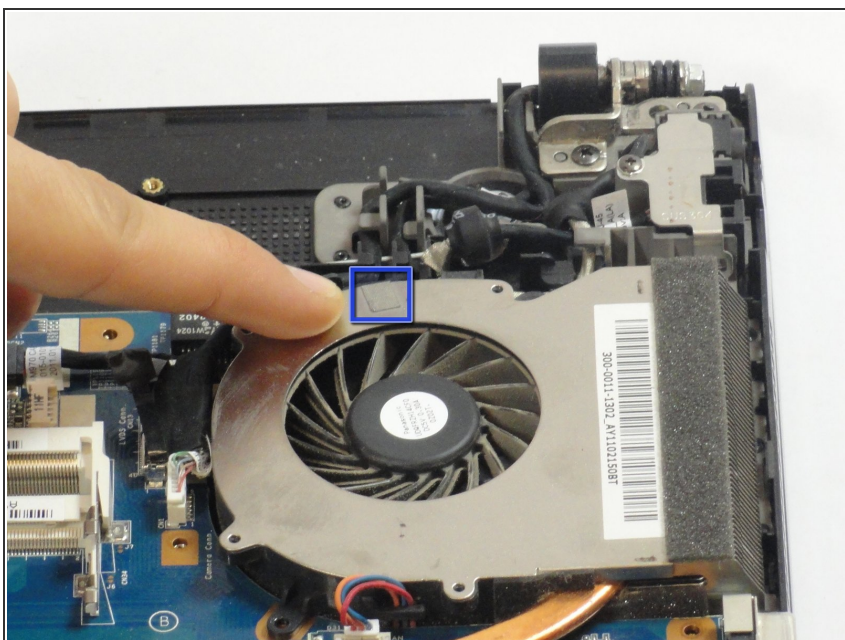


## Step 17



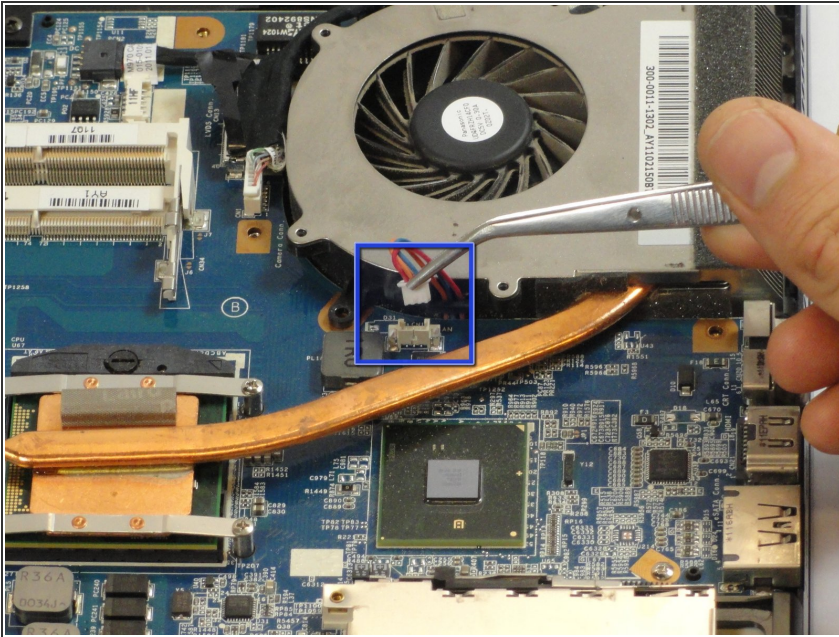
- Remove the two 5.7-mm screws located at the base of the fan, using a Phillips #00 screwdriver.

## Step 18



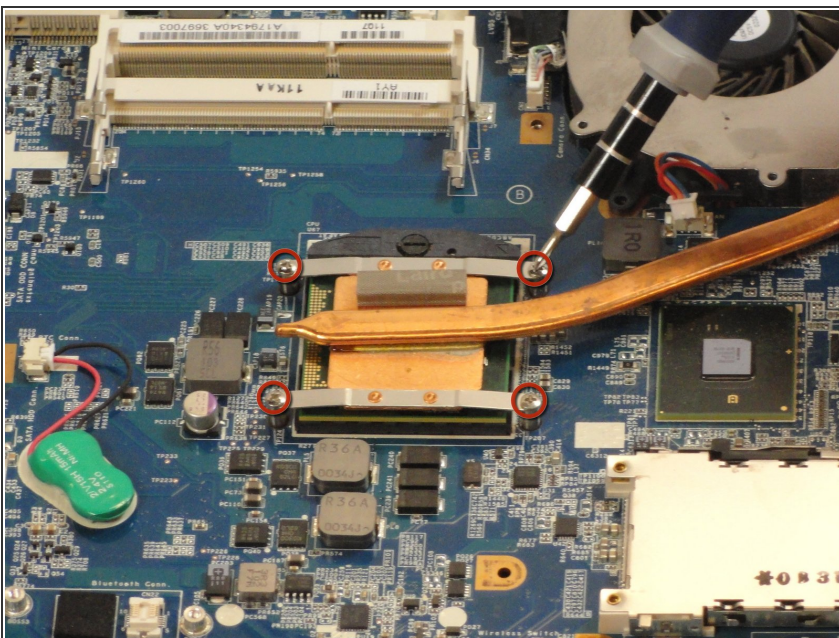
- Pull back the tape located on the far side of the fan.

## Step 19



- Remove the wired connection between the fan and the copper wire using metal tweezers.
- ⚠ Do not pull on the wires directly or it will damage the connection between the fan and the laptop.

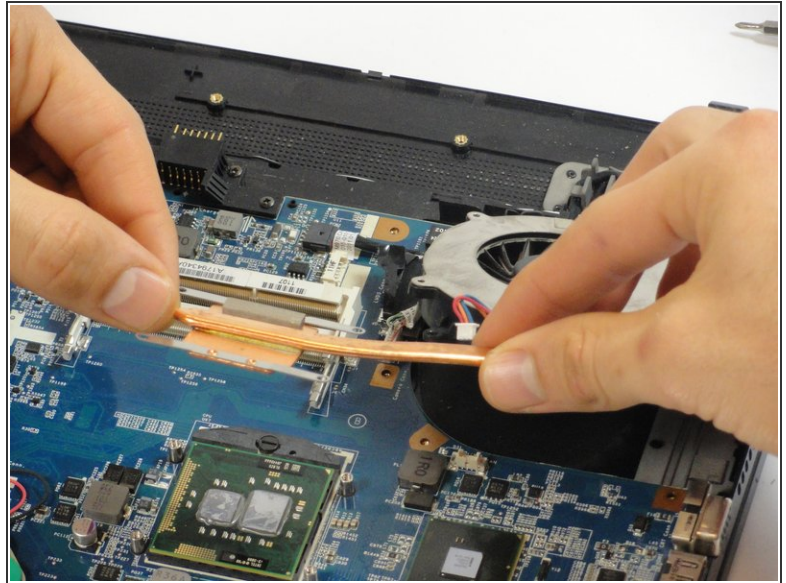
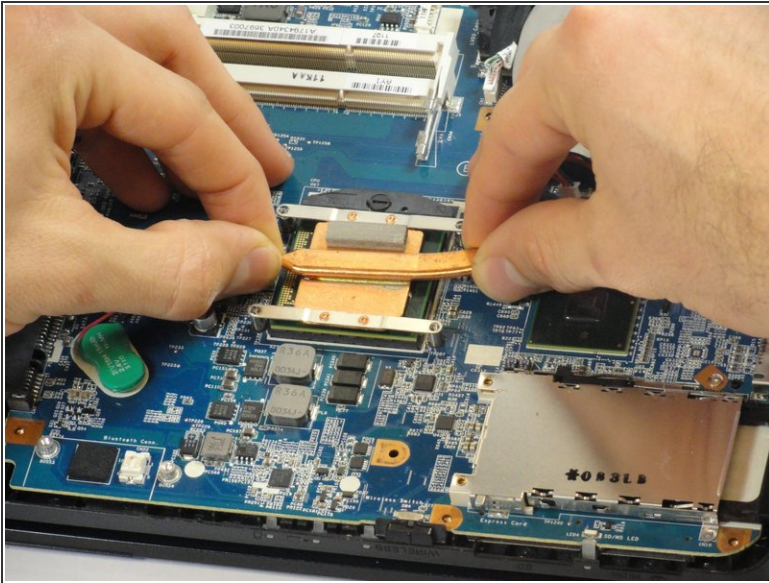
## Step 20



- Remove the four 5.65-mm screws on the processor corners using a Phillips #00 screwdriver.



## Step 21



**i** You are now ready to remove fan and processor connection

- Position thumbs and index fingers close to processor and lift up on the copper wire, while applying slight downward pressure on the motherboard with remaining fingers.

**!** If there is thermal paste between the processor and the fan attachment, increased force will be required to detach the fan.

To reassemble your device, follow these instructions in reverse order.