



Sony α6000 Flash Assembly Replacement

This guide will tell you how to replace the...

Written By: William Lee



INTRODUCTION

This guide will tell you how to replace the flash assembly of the a6000 camera if it breaks or gets damaged.

TOOLS:

[Phillips #00 Screwdriver](#) (1)

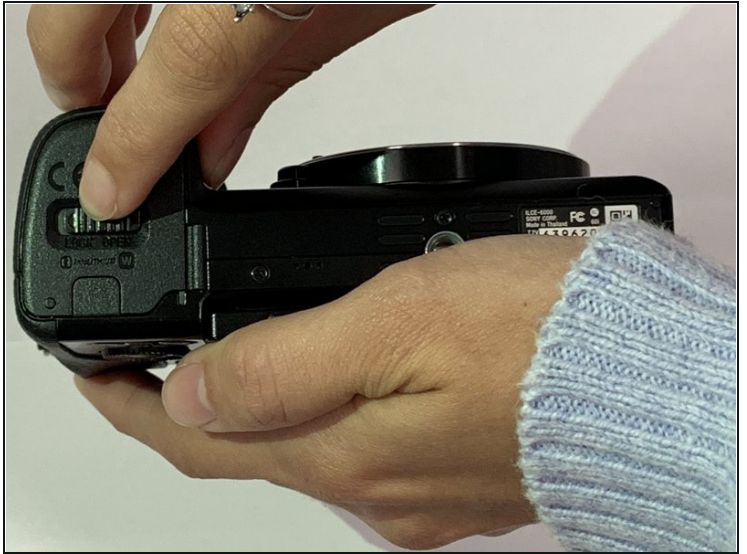
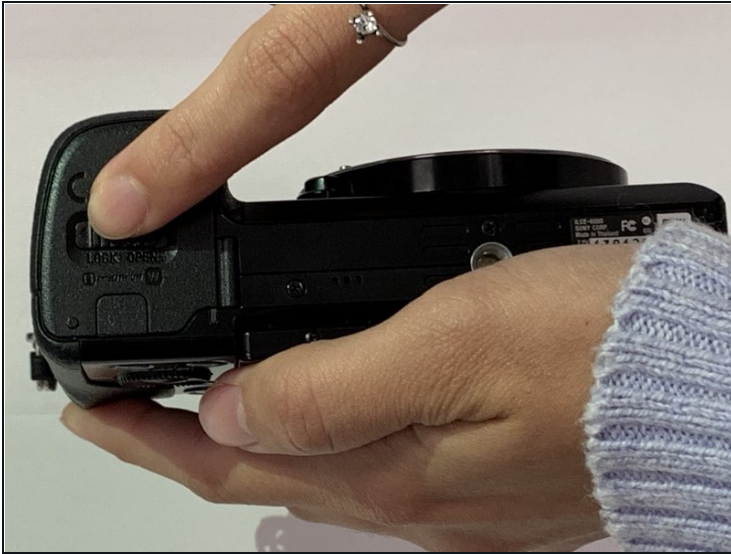
[iFixit Opening Tool](#) (1)

Step 1 — Battery



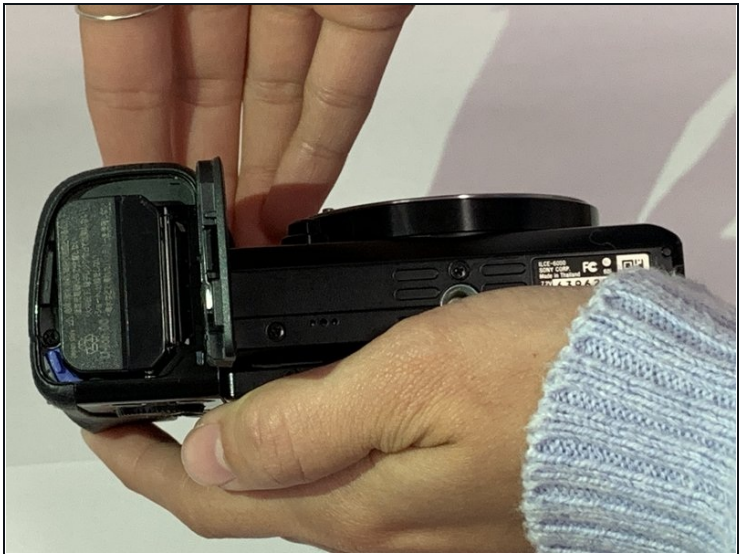
- Begin by placing the camera facing upside down.

Step 2



- Slide the notched locking bar on the battery compartment from LOCK to OPEN.

Step 3



- Push the small blue bar horizontally off of the battery.

Step 4



- Remove the battery.

Step 5 — Flash Assembly



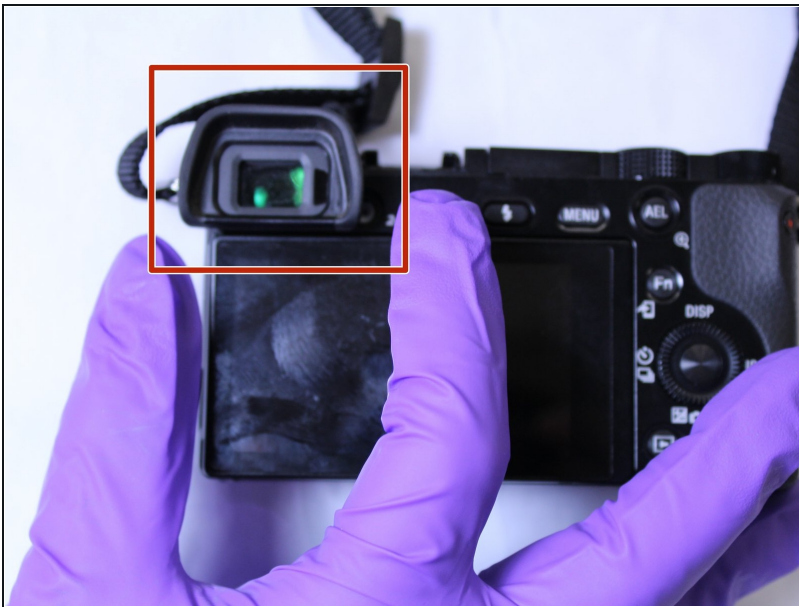
- Position the camera with the flash assembly facing upwards.
- Locate the flash assembly.

Step 6



- Open the flash assembly.
- Using the Phillips #00 screwdriver, remove the single screw beneath the flash assembly.

Step 7



- Remove the eye guard.

Step 8



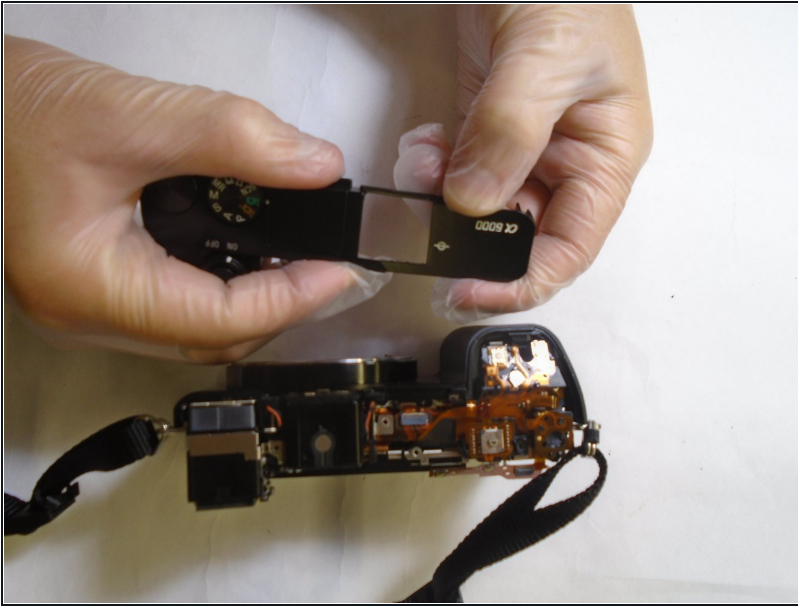
- Position the camera with the LCD screen facing upwards.
- Pull back the LCD Screen.
- Using the Phillips #00 screwdriver, remove the three screws beneath the viewfinder.

Step 9



- Position the camera with the HDMI port facing upwards.
- Using the Phillips #00 screwdriver, unscrew the single screw on the left side of the camera body.

Step 10



- Position the camera with the top panel facing upwards.
- Carefully separate the top of the camera from the body using plastic opening tool.

⚠ Be careful not to break the top of the camera when removing the top panel.

Step 11



- Position the camera so the top panel's underside is facing you
- Using the Phillips #00 screwdriver, unscrew the screw underneath the flash assembly.

Step 12



- Carefully remove the flash assembly from the top pannel

To reassemble your device, follow these instructions in reverse order.